

# Uponor Logic for Plumbing is about moving water from point A to point B flawlessly.

- Most flexible
- Easy to use
- Unique, superior fittings
- Smart and intuitive installation
- Raising industry standards
- Peace of mind

# Uponor Plumbing Systems

## Intelligent design. Tailored solutions. Ultimate performance.

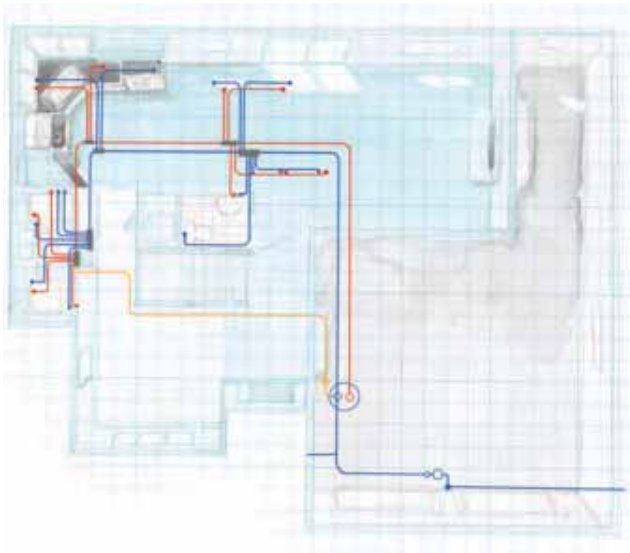
Moving water flawlessly and efficiently is just the beginning. Our crosslinked polyethylene PEX-a tubing is quickly becoming the industry standard. Uponor's Wirsbo AQUAPEX® PEX-a tubing is flexible and easy-to-use. Our unique ProPEX® fittings let installers

work without torches, glues or solvents. Our experienced design and field support staff is available to assist you on the phone or directly on the jobsite. We're committed to develop and provide construction materials and practices that have little or no impact

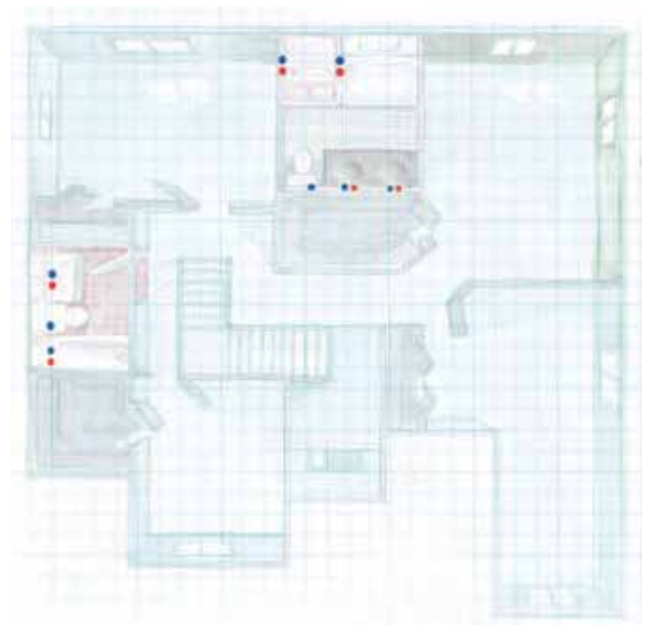
on the environment. We're creating systems that install more cleanly, use less energy and conserve water. We work closely with you to understand what's important to you to create better living environments for your customers. That's Uponor Logic at work.

### Uponor Logic for Plumbing using engineered plastic (EP) Multi-port Tees

First Floor



Second Floor



### Plumbing method summary (typical 2,300 sq ft house)

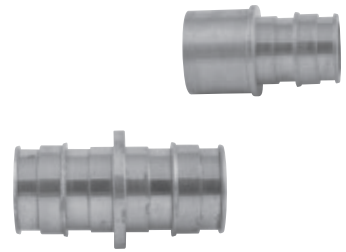
Uponor Logic	Trunk and Branch	Home Run
<ul style="list-style-type: none"> <li>• 14 Fittings</li> <li>• 51 Connections</li> <li>• 490 Feet of tubing</li> <li>• Low connection count means reduced liability</li> <li>• Efficient installations</li> </ul>	<ul style="list-style-type: none"> <li>• 75 Fittings</li> <li>• 174 Connections</li> <li>• 500 Feet of tubing</li> </ul>	<ul style="list-style-type: none"> <li>• 9 Fittings</li> <li>• 41 Connections</li> <li>• 925 Feet of tubing</li> <li>• Low connection count, but much more tubing used</li> </ul>

See our full offering of EP Multi-port Tees on pages 121-123.

# Uponor Plumbing Systems

## Uponor Extends 2" Wirsbo AQUAPEX® Offering

Uponor expanded its Wirsbo AQUAPEX® offering to include 2" tubing along with a complete line of 2" fittings, tools and accessories. The offering includes Uponor's exclusive ProPEX® fittings along with the ProPEX 200 Battery Expander Tool. The following table is a complete listing of all 2" Wirsbo AQUAPEX products. These products are also listed throughout the catalog in their respective categories.



Part No.	Part Description	Each Qty.	Pkg. Qty.	List Price (ft./ea.)	List Price/Pkg.
F1922000	2" Wirsbo AQUAPEX tubing, 20-ft. straight length, 100 ft.	-	100'	\$8.74	\$874.15
<b>NEW</b> F1062000	2" Wirsbo AQUAPEX tubing, 100-ft. coil	-	100'	\$8.74	\$874.15
<b>NEW</b> F1052000	2" Wirsbo AQUAPEX tubing, 200-ft. coil	-	200'	\$8.74	\$1,715.00
<b>NEW</b> F1022000	2" Wirsbo AQUAPEX tubing, 300-ft. coil	-	300'	\$8.74	\$2,572.50
<b>NEW</b> F8052000	2" Expansion Joint Kit	1	-	\$326.00	\$326.00
<b>NEW</b> Q4352000	ProPEX EP Plug for 2" PEX	-	5	\$32.75	\$163.75
Q4682000	ProPEX Ring, 2" (blue print)	-	10	\$2.05	\$20.50
<b>NEW</b> G4522020	ProPEX DZR Brass Male Threaded Adapter, 2" PEX x 2" NPT	-	5	\$149.70	\$748.50
<b>NEW</b> G4542020	ProPEX DZR Brass Coupling, 2" PEX x 2" PEX	-	5	\$151.95	\$759.75
Q4502020	ProPEX Brass Fitting Adapter, 2" PEX x 2" Copper	-	5	\$66.15	\$330.75
Q4512020	ProPEX Brass Sweat Adapter, 2" PEX x 2" Copper	-	5	\$74.40	\$372.00
Q4522020	ProPEX Brass Male Threaded Adapter, 2" PEX x 2" NPT	-	5	\$89.65	\$448.25
Q4532000	ProPEX Brass Plug for 2" PEX	-	5	\$92.50	\$462.50
Q4542015	ProPEX Brass Coupling, 2" PEX x 1½" PEX	-	5	\$62.60	\$313.00
Q4542020	ProPEX Brass Coupling, 2" PEX x 2" PEX	-	5	\$97.10	\$485.50
Q4572020	ProPEX Brass Female Threaded Adapter, 2" PEX x 2" NPT	-	5	\$151.65	\$758.25
Q4702000	ProPEX Brass Tee, 2" PEX x 2" PEX x 2" PEX	-	5	\$165.15	\$825.75
Q4702575	ProPEX Brass Reducing Tee, 2" PEX x 1½" PEX x ¾" PEX	-	5	\$140.30	\$701.50
Q4702051	ProPEX Brass Reducing Tee, 2" PEX x 1½" PEX x 1" PEX	-	5	\$134.85	\$674.25
Q4702053	ProPEX Brass Reducing Tee, 2" PEX x 1½" PEX x 1¼" PEX	-	5	\$158.90	\$794.50
Q4702055	ProPEX Brass Reducing Tee, 2" PEX x 1½" PEX x 1½" PEX	-	5	\$170.00	\$850.00
Q4702275	ProPEX Brass Reducing Tee, 2" PEX x 2" PEX x ¾" PEX	-	5	\$140.30	\$701.50
Q4702210	ProPEX Brass Reducing Tee, 2" PEX x 2" PEX x 1" PEX	-	5	\$140.05	\$700.25
Q4702213	ProPEX Brass Reducing Tee, 2" PEX x 2" PEX x 1¼" PEX	-	5	\$152.00	\$760.00
Q4702215	ProPEX Brass Reducing Tee, 2" PEX x 2" PEX x 1½" PEX	-	5	\$161.15	\$805.75
Q4712000	ProPEX Brass Elbow, 2" PEX x 2" PEX	-	5	\$135.00	\$675.00
Q6262000	ProPEX 200 Battery Expander Tool Kit (includes 2" Pistol, 1½" Pistol, 2" H-series Expander Head, 10-foot Hydraulic Hose, Hydraulic Pump, two batteries, battery charger, expander head lubricant, operation manual and roller case)	1	-	\$10,000.00	\$10,000.00
Q6260200	ProPEX 200 Battery, replacement part	1	-	\$526.75	\$526.75
Q6260700	ProPEX 200 Battery Charger, replacement part	1	-	\$450.00	\$450.00
Q6260002	ProPEX 200 Roller Case, replacement part	1	-	\$670.00	\$670.00
Q6282000	2" H-series ProPEX Expander Head	1	5	\$542.85	\$2,714.25

# Uponor Plumbing Systems

## Wirsbo AQUAPEX Tubing

Wirsbo AQUAPEX tubing is used in hot and cold potable water distribution systems and Uponor residential fire safety systems. Wirsbo AQUAPEX tubing is suitable for use in hydronic heating applications where the system contains no ferrous corrodible components or where any ferrous components are isolated from the tubing. Wirsbo AQUAPEX tubing coils and straight lengths are a natural color.

Wirsbo AQUAPEX tubing is manufactured and listed to ASTM F876 and F877 and CSA B137.5, certified to NSF Standards 14 and 61 and listed by the Hydrostatic Stress Board of PPI at 200°F at 80 psi, 180°F at 100 psi and 73.4°F at 160 psi. Wirsbo AQUAPEX tubing (½", ¾" and 1" sizes only) is listed to UL 1821 and ULC/ORD C199P and carries an additional rating of 120°F at 130 psi.

### Wirsbo AQUAPEX Tubing Coil— Natural



Part No.	Part Description	Coil/Pallet	List Price/Ea.
F1040250	¼" Wirsbo AQUAPEX tubing, 100-ft. coil	50	\$52.90
F1090375	⅜" Wirsbo AQUAPEX tubing, 400-ft. coil	18	\$216.10
F1120375	⅜" Wirsbo AQUAPEX tubing, 1,000-ft. coil	12	\$540.25
F1040500	½" Wirsbo AQUAPEX tubing, 100-ft. coil	22	\$61.75
F1060500	½" Wirsbo AQUAPEX tubing, 300-ft. coil	18	\$185.20
F1120500	½" Wirsbo AQUAPEX tubing, 1,000-ft. coil	8	\$617.40
F1060625	⅝" Wirsbo AQUAPEX tubing, 300-ft. coil	12	\$280.35
F1120625	⅝" Wirsbo AQUAPEX tubing, 1,000-ft. coil	5	\$934.50
F1040750	¾" Wirsbo AQUAPEX tubing, 100-ft. coil	11	\$105.85
F1060750	¾" Wirsbo AQUAPEX tubing, 300-ft. coil	12	\$317.50
F1100750	¾" Wirsbo AQUAPEX tubing, 500-ft. coil	8	\$529.20
F1041000	1" Wirsbo AQUAPEX tubing, 100-ft. coil	12	\$185.20
F1061000	1" Wirsbo AQUAPEX tubing, 300-ft. coil	5	\$555.65
F1101000	1" Wirsbo AQUAPEX tubing, 500-ft. coil	6	\$926.10
F1061250	1¼" Wirsbo AQUAPEX tubing, 100-ft. coil	7	\$353.90
F1021250	1¼" Wirsbo AQUAPEX tubing, 300-ft. coil	2	\$1,061.70
F1061500	1½" Wirsbo AQUAPEX tubing, 100-ft. coil	7	\$416.75
F1021500	1½" Wirsbo AQUAPEX tubing, 300-ft. coil	2	\$1,250.25
<b>NEW</b> F1062000	2" Wirsbo AQUAPEX tubing, 100-ft. coil	1	\$874.15
<b>NEW</b> F1052000	2" Wirsbo AQUAPEX tubing, 200-ft. coil	1	\$1,715.00
<b>NEW</b> F1022000	2" Wirsbo AQUAPEX tubing, 300-ft. coil	1	\$2,572.50

# Uponor Plumbing Systems

2" Wirsbo AQUAPEX Expansion Joint Kit includes two ProPEX Brass Elbows (Q4712000) and four ProPEX Rings (Q4682000).

## 2" Wirsbo AQUAPEX Expansion Joint Kit



Part No.	Part Description	Coil/Pallet	List Price/Ea.
<b>NEW</b> F8052000	2" Wirsbo AQUAPEX Expansion Joint Kit	1	\$326.00

Part No.	Part Description	List Price/Ea.
F1930500	½" Wirsbo AQUAPEX tubing, 20-ft. straight length, 500 ft.	\$308.70
F1930750	¾" Wirsbo AQUAPEX tubing, 20-ft. straight length, 300 ft.	\$317.50
F1921000	1" Wirsbo AQUAPEX tubing, 20-ft. straight length, 200 ft.	\$370.45
F1921250	1¼" Wirsbo AQUAPEX tubing, 20-ft. straight length, 100 ft.	\$353.90
F1921500	1½" Wirsbo AQUAPEX tubing, 20-ft. straight length, 100 ft.	\$416.75
F1922000	2" Wirsbo AQUAPEX tubing, 20-ft. straight length, 100 ft.	\$874.15

## Wirsbo AQUAPEX Tubing Straight Length — Natural



## Wirsbo AQUAPEX plus Tubing

Wirsbo AQUAPEX plus is used in hot and cold potable water distribution systems and Uponor residential fire safety systems. Wirsbo AQUAPEX plus tubing is suitable for use in hydronic heating applications where the system contains no ferrous corrodible components or where any ferrous components are isolated from the tubing. Wirsbo AQUAPEX plus tubing coils and straight lengths are available in red and blue.

Wirsbo AQUAPEX plus tubing is manufactured and listed to ASTM F876 and F877 and CSA B137.5, certified to NSF Standards 14 and 61 and listed by the Hydrostatic Stress Board of PPI at 200°F at 80 psi, 180°F at 100 psi and 73.4°F at 160 psi.

Part No.	Part Description	Coil/Pallet	List Price/Ea.
F2040500	½" Wirsbo AQUAPEX tubing plus — Red, 100-ft. coil	22	\$61.75
F2060500	½" Wirsbo AQUAPEX tubing plus — Red, 300-ft. coil	18	\$185.20
F2120500	½" Wirsbo AQUAPEX tubing plus — Red, 1,000-ft. coil	8	\$617.40
F2040750	¾" Wirsbo AQUAPEX tubing plus — Red, 100-ft. coil	11	\$105.85
F2060750	¾" Wirsbo AQUAPEX tubing plus — Red, 300-ft. coil	12	\$317.50
F2100750	¾" Wirsbo AQUAPEX tubing plus — Red, 500-ft. coil	8	\$529.20
F2041000	1" Wirsbo AQUAPEX tubing plus — Red, 100-ft. coil	12	\$185.20
F2061000	1" Wirsbo AQUAPEX tubing plus — Red, 300-ft. coil	5	\$555.65
F2101000	1" Wirsbo AQUAPEX tubing plus — Red, 500-ft. coil	6	\$926.10

## Wirsbo AQUAPEX plus — Red Tubing Coil



# Uponor Plumbing Systems

## Wirbo AQUAPEX plus — Red Tubing Straight Length



Part No.	Part Description	List Price/Ea.
F2930500	½" Wirbo AQUAPEX tubing plus — Red, 20-ft. straight length, 500 ft.	\$308.70
F2930750	¾" Wirbo AQUAPEX tubing plus — Red, 20-ft. straight length, 300 ft.	\$317.50
F2921000	1" Wirbo AQUAPEX tubing plus — Red, 20-ft. straight length, 200 ft.	\$370.45

## Wirbo AQUAPEX plus — Blue Tubing Coil



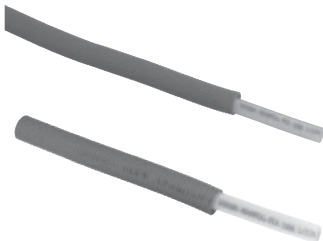
Part No.	Part Description	Coil/Pallet	List Price/Ea.
F3040500	½" Wirbo AQUAPEX tubing plus — Blue, 100-ft. coil	22	\$61.75
F3060500	½" Wirbo AQUAPEX tubing plus — Blue, 300-ft. coil	18	\$185.20
F3120500	½" Wirbo AQUAPEX tubing plus — Blue, 1,000-ft. coil	8	\$617.40
F3040750	¾" Wirbo AQUAPEX tubing plus — Blue, 100-ft. coil	11	\$105.85
F3060750	¾" Wirbo AQUAPEX tubing plus — Blue, 300-ft. coil	12	\$317.50
F3100750	¾" Wirbo AQUAPEX tubing plus — Blue, 500-ft. coil	8	\$529.20
F3041000	1" Wirbo AQUAPEX tubing plus — Blue, 100-ft. coil	12	\$185.20
F3061000	1" Wirbo AQUAPEX tubing plus — Blue, 300-ft. coil	5	\$555.65
F3101000	1" Wirbo AQUAPEX tubing plus — Blue, 500-ft. coil	6	\$926.10

## Wirbo AQUAPEX plus — Blue Tubing Straight Length



Part No.	Part Description	List Price/Ea.
F3930500	½" Wirbo AQUAPEX tubing plus — Blue, 20-ft. straight length, 500 ft.	\$308.70
F3930750	¾" Wirbo AQUAPEX tubing plus — Blue, 20-ft. straight length, 300 ft.	\$317.50
F3921000	1" Wirbo AQUAPEX tubing plus — Blue, 20-ft. straight length, 200 ft.	\$370.45

## Pre-sleeved Wirbo AQUAPEX Tubing



Pre-sleeved Wirbo AQUAPEX tubing is used in hot and cold water distribution systems. The high-density polyethylene (HDPE) corrugated sleeve provides protection for installations in concrete slabs or soil, and allows for removal and replacement of the tubing if required.

Part No.	Part Description	Each Qty.	Pallet Qty.	List Price/Ea.
<b>NEW</b> F1092500	½" Pre-sleeved Wirbo AQUAPEX tubing — Red Sleeve, 400-ft. coil	1	4	\$415.80
<b>NEW</b> F1091500	½" Pre-sleeved Wirbo AQUAPEX tubing — Blue Sleeve, 400-ft. coil	1	4	\$415.80
<b>NEW</b> F1092750	¾" Pre-sleeved Wirbo AQUAPEX tubing — Red Sleeve, 400-ft. coil	1	3	\$680.00
<b>NEW</b> F1091750	¾" Pre-sleeved Wirbo AQUAPEX tubing — Blue Sleeve, 400-ft. coil	1	3	\$680.00

## EP Multi-port Tees

EP Branch Multi-port Tee features 3/4" ProPEX inlet with 1/2" ProPEX branch outlets. The tee is made of EP, which is proven in demanding hot-water applications.

**Note:** ProPEX Tool is required. ProPEX Rings sold separately.

Part No.	Part Description	Each Qty.	Pkg. Qty.	List Price/Ea.
<b>NEW</b> Q2237550	3/4" EP Branch Multi-port Tee, 3 outlets	-	10	\$14.40
Q2247550	3/4" EP Branch Multi-port Tee, 4 outlets	-	10	\$20.85
<b>NEW</b> Q2267550	3/4" EP Branch Multi-port Tee, 6 outlets	-	10	\$31.95
Q2261050	1" EP Branch Multi-port Tee, 6 outlets	-	10	\$33.50

**EP Branch Multi-port Tee**



EP Flow-through Multi-port Tee features 3/4" ProPEX inlets with 1/2" ProPEX branch outlets or 1" ProPEX inlets or 3/4" ProPEX inlets with 1/2" ProPEX branch outlets. The tee is made of EP, which is proven in demanding hot-water applications.

**Note:** ProPEX Tool is required. ProPEX Rings sold separately.

Part No.	Part Description	Each Qty.	Pkg. Qty.	List Price/Ea.
Q2227557	EP Flow-through Multi-port Tee, 2 outlets, 3/4" x 3/4" ProPEX	-	10	\$12.30
Q2237557	EP Flow-through Multi-port Tee, 3 outlets, 3/4" x 3/4" ProPEX	-	10	\$16.70
Q2247557	EP Flow-through Multi-port Tee, 4 outlets, 3/4" x 3/4" ProPEX	-	10	\$20.85
Q2241057	EP Flow-through Multi-port Tee, 4 outlets, 1" x 3/4" ProPEX	-	10	\$25.55
<b>NEW</b> Q2267557	EP Flow-through Multi-port Tee, 6 outlets, 3/4" x 3/4" ProPEX	-	10	\$31.95
Q2261057	EP Flow-through Multi-port Tee, 6 outlets, 1" x 3/4" ProPEX	-	10	\$33.50
Q2261051	EP Flow-through Multi-port Tee, 6 outlets, 1" x 1" ProPEX	-	10	\$33.50

**EP Flow-through Multi-port Tee**



EP Flow-through Opposing-port Multi-port Tee features 3/4" ProPEX inlets with opposing 1/2" ProPEX branch outlets. These are designed for central location to facilitate piping in two directions. The tee is made of EP, which is proven in demanding hot-water applications.

**Note:** ProPEX Tool is required. ProPEX Rings sold separately.

Part No.	Part Description	Each Qty.	Pkg. Qty.	List Price/Ea.
<b>NEW</b> Q2337557	EP Flow-through Opposing-port Multi-port Tee, 3 outlets, 3/4" x 3/4" ProPEX	-	10	\$15.60
<b>NEW</b> Q2347557	EP Flow-through Opposing-port Multi-port Tee, 4 outlets, 3/4" x 3/4" ProPEX	-	10	\$21.15
<b>NEW</b> Q2367557	EP Flow-through Opposing-port Multi-port Tee, 6 outlets, 3/4" x 3/4" ProPEX	-	10	\$32.45

**EP Flow-through Opposing-port Multi-port Tee**



# Uponor Plumbing Systems

## EP Branch Opposing-port Multi-port Tee



EP Branch Opposing-port Multi-port Tee features a 3/4" ProPEX inlet with opposing 1/2" ProPEX branch outlets. These are designed for central location to facilitate piping in two directions. The tee is made of EP, which is proven in demanding hot-water applications.

**Note:** ProPEX Tool is required. ProPEX Rings sold separately.

Part No.	Part Description	Each Qty.	Pkg. Qty.	List Price/Ea.
Q2337550	3/4" EP Branch Opposing-port Multi-port Tee, 3 outlets	-	10	\$15.65
Q2347550	3/4" EP Branch Opposing-port Multi-port Tee, 4 outlets	-	10	\$21.00
Q2387550	3/4" EP Branch Opposing-port Multi-port Tee, 8 outlets	-	10	\$35.60

## EP Flow-through Roll-out Multi-port Tee



EP Flow-through Vertical Multi-port Tee features an integrated vertical 3/4" ProPEX tee with 1/2" ProPEX branch outlets. The Multi-port Tee is designed for demanding slab-on-grade plumbing applications, and eliminates the need for multiple connections. The tee is made of EP, which is proven in demanding hot-water applications.

**Note:** ProPEX Tool is required. ProPEX Rings sold separately.

Part No.	Part Description	Each Qty.	Pkg. Qty.	List Price/Ea.
Q2237757	EP Flow-through Multi-port Vertical Tee, 3 outlets, 3/4" x 3/4" x 3/4" ProPEX	-	10	\$29.15
Q2247757	EP Flow-through Multi-port Vertical Tee, 4 outlets, 3/4" x 3/4" x 3/4" ProPEX	-	10	\$32.55

EP Flow-through Multi-port Horizontal Tee features an integrated horizontal 3/4" ProPEX tee with 1/2" ProPEX branch outlets. The Multi-port Tee is designed for demanding slab-on-grade plumbing applications, and eliminates the need for multiple connections. The tee is made of EP, which is proven in demanding hot-water applications.

**Note:** ProPEX Tool is required. ProPEX Rings sold separately.



Part No.	Part Description	Each Qty.	Pkg. Qty.	List Price/Ea.
Q2247577	EP Flow-through Multi-port Horizontal Tee, 4 outlets, 3/4" x 3/4" x 3/4" ProPEX	-	10	\$32.55

## EP Flow-through Roll-out Multi-port Elbow



EP Flow-through Multi-port Elbow features an integrated 3/4" ProPEX elbow with 1/2" ProPEX branch outlets. The elbow is designed for demanding slab-on-grade plumbing applications, and eliminates the need for multiple connections. The elbow is made of EP, which is proven in demanding hot-water applications.

**Note:** ProPEX Tool is required. ProPEX Rings sold separately.

Part No.	Part Description	Each Qty.	Pkg. Qty.	List Price/Ea.
Q2235577	EP Flow-through Multi-port Elbow, 3 outlets, 3/4" x 3/4" ProPEX	-	10	\$24.85
Q2245577	EP Flow-through Multi-port Elbow, 4 outlets, 3/4" x 3/4" ProPEX	-	10	\$24.85

# Uponor Plumbing Systems

EP Branch Multi-port Elbow features an integrated 3/4" or 1" ProPEX elbow inlet with 1/2" ProPEX branch outlets. The elbow is designed for commercial plumbing applications, and eliminates the need for multiple connections. The elbow is made of EP, which is proven in demanding hot-water applications.

**Note:** ProPEX Tool is required. ProPEX Rings sold separately.

## EP Branch Multi-port Elbow



	Part No.	Part Description	Each Qty.	Pkg. Qty.	List Price/Ea.
<b>NEW</b>	Q2077550	3/4" EP Branch Multi-port Elbow, 7 outlets	-	5	\$45.05
<b>NEW</b>	Q2087550	3/4" EP Branch Multi-port Elbow, 8 outlets	-	5	\$49.00
<b>NEW</b>	Q2101000	1" EP Branch Multi-port Elbow, 10 outlets	-	5	\$52.15

EP Branch Multi-port Tee features an integrated 3/4" or 1" ProPEX inlet with 1/2" ProPEX branch outlets. The tee is designed for commercial plumbing applications, and eliminates the need for multiple connections. The elbow is made of EP, which is proven in demanding hot-water applications.

**Note:** ProPEX Tool is required. ProPEX Rings sold separately.

## EP Branch Multi-port Tee



	Part No.	Part Description	Each Qty.	Pkg. Qty.	List Price/Ea.
<b>NEW</b>	Q2277550	3/4" EP Branch Multi-port Tee, 7 outlets	-	5	\$45.00
<b>NEW</b>	Q2287550	3/4" EP Branch Multi-port Tee, 8 outlets	-	5	\$49.20
<b>NEW</b>	Q2101051	1" EP Branch Multi-port Tee, 10 outlets	-	5	\$52.00
<b>NEW</b>	Q2121051	1" EP Branch Multi-port Tee, 12 outlets	-	5	\$55.75

## ProPEX Fittings

A ProPEX Ring is required to make a ProPEX connection. The 1/2" rings now include a leading edge chamfer and integral stop edge to further simplify the use of ProPEX. Red and blue print on the rings distinguishes hot and cold lines.

## ProPEX Ring



	Part No.	Part Description	Pkg. Qty.	Case Qty.	List Price/Ea.
	Q4690301	ProPEX Ring, 3/8" (red print)	50	500	\$0.17
	Q4690302	ProPEX Ring, 3/8" (blue print)	50	500	\$0.17
<b>NEW</b>	Q4690511	ProPEX Ring with Stop, 1/2" (red print)	50	2,000	\$0.17
<b>NEW</b>	Q4690512	ProPEX Ring with Stop, 1/2" (blue print)	50	2,000	\$0.17
	Q4690751	ProPEX Ring, 3/4" (red print)	50	1,000	\$0.28
	Q4690752	ProPEX Ring, 3/4" (blue print)	50	1,000	\$0.28
	Q4681000	ProPEX Ring, 1" (blue print)	50	500	\$0.50
	Q4681250	ProPEX Ring, 1 1/4" (black print)	10	200	\$0.75
	Q4681500	ProPEX Ring, 1 1/2" (black print)	5	100	\$1.00
	Q4682000	ProPEX Ring, 2" (blue print)	10	100	\$2.05

# Uponor Plumbing Systems

## ProPEX EP Coupling

ProPEX EP Coupling makes PEX-to-PEX connections.

**Note:** ProPEX Tool is required. ProPEX Rings sold separately.



**NEW**

**NEW**

Part No.	Part Description	Pkg. Qty.	Case Qty.	List Price/Ea.
Q4773838	ProPEX EP Coupling, 3/8" PEX x 3/8" PEX	25	100	\$1.25
Q4775050	ProPEX EP Coupling, 1/2" PEX x 1/2" PEX	25	100	\$1.30
Q4775075	ProPEX EP Coupling, 1/2" PEX x 3/4" PEX	25	100	\$2.60
Q4777575	ProPEX EP Coupling, 3/4" PEX x 3/4" PEX	25	100	\$1.55
Q4777510	ProPEX EP Coupling, 3/4" PEX x 1" PEX	10	100	\$3.75
Q4771010	ProPEX EP Coupling, 1" PEX x 1" PEX	10	100	\$2.40

## ProPEX EP Elbow

ProPEX EP Elbow makes tight 90-degree connections for Wirsbo AQUAPEX tubing in supply and return mains.

**Note:** ProPEX Tool is required. ProPEX Rings sold separately.



Part No.	Part Description	Pkg. Qty.	Case Qty.	List Price/Ea.
Q4760500	ProPEX EP Elbow, 1/2" PEX x 1/2" PEX	25	100	\$1.50
Q4760750	ProPEX EP Elbow, 3/4" PEX x 3/4" PEX	25	100	\$1.85
Q4761000	ProPEX EP Elbow, 1" PEX x 1" PEX	10	100	\$3.90
Q4761250	ProPEX EP Elbow, 1 1/4" PEX x 1 1/4" PEX	10	100	\$10.10
Q4761500	ProPEX EP Elbow, 1 1/2" PEX x 1 1/2" PEX	10	100	\$12.80

## ProPEX EP Tee

ProPEX EP Tee makes diverting connections for Wirsbo AQUAPEX tubing in supply and return mains. Branch size is listed last in the part description.

**Note:** ProPEX Tool is required. ProPEX Rings sold separately.



Part No.	Part Description	Pkg. Qty.	Case Qty.	List Price/Ea.
Q4755050	ProPEX EP Tee, 1/2" PEX x 1/2" PEX x 1/2" PEX	25	100	\$1.50
Q4757575	ProPEX EP Tee, 3/4" PEX x 3/4" PEX x 3/4" PEX	25	100	\$2.45
Q4751010	ProPEX EP Tee, 1" PEX x 1" PEX x 1" PEX	10	100	\$4.40
Q4751313	ProPEX EP Tee, 1 1/4" PEX x 1 1/4" PEX x 1 1/4" PEX	10	100	\$11.45
Q4751515	ProPEX EP Tee, 1 1/2" PEX x 1 1/2" PEX x 1 1/2" PEX	10	100	\$15.30

# Uponor Plumbing Systems

ProPEX EP Reducing Tee makes diverting connections for Wirsbo AQUAPEX tubing in supply and return mains. Branch size is listed last in the part description.

**Note:** ProPEX Tool is required. ProPEX Rings sold separately.

Part No.	Part Description	Pkg. Qty.	Case Qty.	List Price/Ea.
<b>NEW</b> Q4755575	ProPEX EP Reducing Tee, 1/2" PEX x 1/2" PEX x 3/4" PEX	25	100	\$5.95
Q4757555	ProPEX EP Reducing Tee, 3/4" PEX x 1/2" PEX x 1/2" PEX	25	100	\$2.35
Q4757557	ProPEX EP Reducing Tee, 3/4" PEX x 1/2" PEX x 3/4" PEX	25	100	\$2.35
Q4757550	ProPEX EP Reducing Tee, 3/4" PEX x 3/4" PEX x 1/2" PEX	25	100	\$2.05
<b>NEW</b> Q4757710	ProPEX EP Reducing Tee, 3/4" PEX x 3/4" PEX x 1" PEX	10	100	\$8.85
Q4751775	ProPEX EP Reducing Tee, 1" PEX x 3/4" PEX x 3/4" PEX	10	100	\$3.85
Q4751751	ProPEX EP Reducing Tee, 1" PEX x 3/4" PEX x 1" PEX	10	100	\$4.60
Q4751150	ProPEX EP Reducing Tee, 1" PEX x 1" PEX x 1/2" PEX	10	100	\$4.05
Q4751175	ProPEX EP Reducing Tee, 1" PEX x 1" PEX x 3/4" PEX	10	100	\$4.45
Q4751317	ProPEX EP Reducing Tee, 1 1/4" PEX x 1" PEX x 3/4" PEX	10	100	\$9.05
Q4751311	ProPEX EP Reducing Tee, 1 1/4" PEX x 1" PEX x 1" PEX	10	100	\$10.55
Q4751337	ProPEX EP Reducing Tee, 1 1/4" PEX x 1 1/4" PEX x 3/4" PEX	10	100	\$10.60
Q4751331	ProPEX EP Reducing Tee, 1 1/4" PEX x 1 1/4" PEX x 1" PEX	10	100	\$10.95
Q4751517	ProPEX EP Reducing Tee, 1 1/2" PEX x 1" PEX x 3/4" PEX	10	100	\$12.70
Q4751511	ProPEX EP Reducing Tee, 1 1/2" PEX x 1" PEX x 1" PEX	10	100	\$12.70
Q4751557	ProPEX EP Reducing Tee, 1 1/2" PEX x 1 1/2" PEX x 3/4" PEX	10	100	\$13.65
Q4751551	ProPEX EP Reducing Tee, 1 1/2" PEX x 1 1/2" PEX x 1" PEX	10	100	\$14.05
Q4751553	ProPEX EP Reducing Tee, 1 1/2" PEX x 1 1/2" PEX x 1 1/4" PEX	10	100	\$14.45

## ProPEX EP Reducing Tee



ProPEX EP Plug temporarily or permanently terminates the end of Wirsbo AQUAPEX tubing.

**Note:** ProPEX tool is required. ProPEX Rings sold separately.

Part No.	Part Description	Pkg. Qty.	Case Qty.	List Price/Ea.
Q4350500	ProPEX EP Plug for 1/2" PEX	25	100	\$1.00
Q4350750	ProPEX EP Plug for 3/4" PEX	25	100	\$1.35
Q4351000	ProPEX EP Plug for 1" PEX	10	100	\$2.10
<b>NEW</b> Q4351250	ProPEX EP Plug for 1 1/4" PEX	10	100	\$12.30
<b>NEW</b> Q4351500	ProPEX EP Plug for 1 1/2" PEX	10	100	\$18.90
<b>NEW</b> Q4352000	ProPEX EP Plug for 2" PEX	5	50	\$32.75

## ProPEX EP Plug



# Uponor Plumbing Systems

## ProPEX EP Swivel Closet Adapter



ProPEX EP Swivel Closet Adapter (with plastic nut) connects  $\frac{3}{8}$ " or  $\frac{1}{2}$ " Wirsbo AQUAPEX tubing to water closet.

**Note:** ProPEX Tool is required. ProPEX Rings sold separately.

Part No.	Part Description	Pkg. Qty.	Case Qty.	List Price/Ea.
Q4340375	ProPEX EP Swivel Closet Adapter, $\frac{3}{8}$ " PEX x $\frac{7}{8}$ " Ballcock	25	100	\$2.80
Q4340500	ProPEX EP Swivel Closet Adapter, $\frac{1}{2}$ " PEX x $\frac{7}{8}$ " Ballcock	25	100	\$2.80

## ProPEX EP Swivel Faucet Adapter



ProPEX EP Swivel Faucet Adapter (with plastic nut) connects  $\frac{1}{2}$ " Wirsbo AQUAPEX tubing to male NPSM faucet connections.

**Note:** ProPEX Tool is required. ProPEX Rings sold separately.

Part No.	Part Description	Pkg. Qty.	Case Qty.	List Price/Ea.
Q4360500	ProPEX EP Swivel Faucet Adapter, $\frac{1}{2}$ " PEX x $\frac{1}{2}$ " NPSM	25	100	\$2.65

## ProPEX Brass Coupling



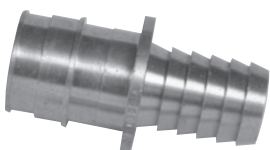
ProPEX Brass Coupling makes PEX-to-PEX connections.

**Note:** ProPEX Tool is required. ProPEX Rings sold separately.

Part No.	Part Description	Pkg. Qty.	Case Qty.	List Price/Ea.
* Q4543838	ProPEX Brass Coupling, $\frac{3}{8}$ " PEX x $\frac{3}{8}$ " PEX	25	100	\$2.90
Q4543850	ProPEX Brass Coupling, $\frac{3}{8}$ " PEX x $\frac{1}{2}$ " PEX	25	100	\$5.05
* Q4545050	ProPEX Brass Coupling, $\frac{1}{2}$ " PEX x $\frac{1}{2}$ " PEX	25	100	\$2.55
* Q4545075	ProPEX Brass Coupling, $\frac{1}{2}$ " PEX x $\frac{3}{4}$ " PEX	25	100	\$7.60
* Q4547575	ProPEX Brass Coupling, $\frac{3}{4}$ " PEX x $\frac{3}{4}$ " PEX	25	100	\$5.35
* Q4547510	ProPEX Brass Coupling, $\frac{3}{4}$ " PEX x 1" PEX	10	100	\$9.05
* Q4541010	ProPEX Brass Coupling, 1" PEX x 1" PEX	10	100	\$9.45
Q4542015	ProPEX Brass Coupling, 2" PEX x 1 $\frac{1}{2}$ " PEX	5	-	\$62.60
Q4542020	ProPEX Brass Coupling, 2" PEX x 2" PEX	5	-	\$97.10

\* Engineered plastic alternate available in EP section.

## ProPEX Brass to Polyethylene (PE) Coupling



ProPEX Brass to Polyethylene (PE) Coupling transitions black PE tubing to Wirsbo AQUAPEX tubing. Product does not include hose clamps for the PE side of the coupling.

**Note:** ProPEX Tool is required. ProPEX Rings sold separately.

Part No.	Part Description	Pkg. Qty.	Case Qty.	List Price/Ea.
Q4591010	ProPEX Brass to PE Coupling, 1" PEX x 1" PE	10	100	\$16.65

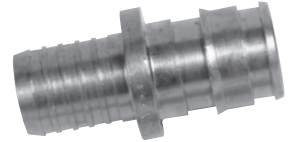
# Uponor Plumbing Systems

ProPEX Brass to Polybutylene (PB) Coupling transitions PB tubing to Wirsbo AQUAPEX tubing. Product does not include the crimp ring for the PB side of the coupling.

**Note:** ProPEX Tool is required. ProPEX Rings sold separately.

Part No.	Part Description	Pkg. Qty.	Case Qty.	List Price/Ea.
Q4585050	ProPEX Brass to PB Coupling, 1/2" PEX x 1/2" PB	25	100	\$4.70
Q4587575	ProPEX Brass to PB Coupling, 3/4" PEX x 3/4" PB	25	100	\$8.40

## ProPEX Brass to Polybutylene (PB) Coupling



ProPEX Brass Elbow makes tight 90-degree connections for Wirsbo AQUAPEX tubing in supply and return mains.

**Note:** ProPEX Tool is required. ProPEX Rings sold separately.

Part No.	Part Description	Pkg. Qty.	Case Qty.	List Price/Ea.
* Q4710500	ProPEX Brass Elbow, 1/2" PEX x 1/2" PEX	25	100	\$4.30
* Q4710750	ProPEX Brass Elbow, 3/4" PEX x 3/4" PEX	25	100	\$6.35
* Q4711000	ProPEX Brass Elbow, 1" PEX x 1" PEX	10	100	\$10.50
Q4712000	ProPEX Brass Elbow, 2" PEX x 2" PEX	5	-	\$135.00

\* Engineered plastic alternate available in EP section.

## ProPEX Brass Elbow



ProPEX Drop Ear Brass Elbow provides rigid 90-degree connections and the ability to secure Wirsbo AQUAPEX tubing.

**Note:** ProPEX Tool is required. ProPEX Rings sold separately.

Part No.	Part Description	Pkg. Qty.	Case Qty.	List Price/Ea.
Q4233850	ProPEX Drop Ear Brass Elbow, 3/8" PEX x 1/2" FIP	25	100	\$13.80
Q4235038	ProPEX Drop Ear Brass Elbow, 1/2" PEX x 3/8" FIP	25	100	\$10.20
Q4235050	ProPEX Drop Ear Brass Elbow, 1/2" PEX x 1/2" FIP	25	100	\$7.90

## ProPEX Drop Ear Brass Elbow



ProPEX Brass Elbow with MIP makes 90-degree connections for 1/2" Wirsbo AQUAPEX tubing to 1/2" male NPT thread.

**Note:** ProPEX Tool is required. ProPEX Rings sold separately.

Part No.	Part Description	Pkg. Qty.	Case Qty.	List Price/Ea.
Q4125050	ProPEX Brass Elbow, 1/2" PEX x 1/2" MIP	25	100	\$7.50

## ProPEX Brass Elbow with MIP



# Uponor Plumbing Systems

## ProPEX Brass Tee



ProPEX Brass Tee makes diverting connections for Wirsbo AQUAPEX tubing in supply and return mains. Branch size is listed last in the part description.

**Note:** ProPEX Tool is required. ProPEX Rings sold separately.

Part No.	Part Description	Pkg. Qty.	Case Qty.	List Price/Ea.
* Q4705050	ProPEX Brass Tee, 1/2" PEX x 1/2" PEX x 1/2" PEX	25	100	\$5.25
* Q4707575	ProPEX Brass Tee, 3/4" PEX x 3/4" PEX x 3/4" PEX	25	100	\$8.45
* Q4701010	ProPEX Brass Tee, 1" PEX x 1" PEX x 1" PEX	10	100	\$15.75
Q4702000	ProPEX Brass Tee, 2" PEX x 2" PEX x 2" PEX	-	5	\$165.15

\* Engineered plastic alternate available in EP section.

## ProPEX Brass Reducing Tee



ProPEX Brass Reducing Tee makes diverting connections for Wirsbo AQUAPEX tubing in supply and return mains. Branch size is listed last in the part description.

**Note:** ProPEX Tool is required. ProPEX Rings sold separately.

Part No.	Part Description	Pkg. Qty.	Case Qty.	List Price/Ea.
* Q4705575	ProPEX Brass Reducing Tee, 1/2" PEX x 1/2" PEX x 3/4" PEX	25	100	\$8.85
* Q4707555	ProPEX Brass Reducing Tee, 3/4" PEX x 1/2" PEX x 1/2" PEX	25	100	\$8.90
* Q4707557	ProPEX Brass Reducing Tee, 3/4" PEX x 1/2" PEX x 3/4" PEX	25	100	\$8.45
* Q4707550	ProPEX Brass Reducing Tee, 3/4" PEX x 3/4" PEX x 1/2" PEX	25	100	\$8.35
* Q4707710	ProPEX Brass Reducing Tee, 3/4" PEX x 3/4" PEX x 1" PEX	10	100	\$13.50
* Q4701775	ProPEX Brass Reducing Tee, 1" PEX x 3/4" PEX x 3/4" PEX	10	100	\$15.75
* Q4701751	ProPEX Brass Reducing Tee, 1" PEX x 3/4" PEX x 1" PEX	10	100	\$15.75
* Q4701150	ProPEX Brass Reducing Tee, 1" PEX x 1" PEX x 1/2" PEX	10	100	\$15.75
* Q4701175	ProPEX Brass Reducing Tee, 1" PEX x 1" PEX x 3/4" PEX	10	100	\$15.75
Q4702575	ProPEX Brass Reducing Tee, 2" PEX x 1 1/2" PEX x 3/4" PEX	5	-	\$140.30
Q4702051	ProPEX Brass Reducing Tee, 2" PEX x 1 1/2" PEX x 1" PEX	5	-	\$134.85
Q4702053	ProPEX Brass Reducing Tee, 2" PEX x 1 1/2" PEX x 1 1/4" PEX	5	-	\$158.90
Q4702055	ProPEX Brass Reducing Tee, 2" PEX x 1 1/2" PEX x 1 1/2" PEX	5	-	\$170.00
Q4702275	ProPEX Brass Reducing Tee, 2" PEX x 2" PEX x 3/4" PEX	5	-	\$140.30
Q4702210	ProPEX Brass Reducing Tee, 2" PEX x 2" PEX x 1" PEX	5	-	\$140.05
Q4702213	ProPEX Brass Reducing Tee, 2" PEX x 2" PEX x 1 1/4" PEX	5	-	\$152.00
Q4702215	ProPEX Brass Reducing Tee, 2" PEX x 2" PEX x 1 1/2" PEX	5	-	\$161.15

\* Engineered plastic alternate available in EP section.

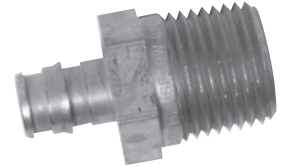
# Uponor Plumbing Systems

ProPEX Brass Male Threaded Adapter connects Wirsbo AQUAPEX tubing to male NPT threads and are intended as transition fittings from metal to PEX.

**Note:** ProPEX tool is required. ProPEX Rings sold separately.

Part No.	Part Description	Pkg. Qty.	Case Qty.	List Price/Ea.
Q4523850	ProPEX Brass Male Threaded Adapter, 3/8" PEX x 1/2" NPT	25	100	\$3.50
Q4525050	ProPEX Brass Male Threaded Adapter, 1/2" PEX x 1/2" NPT	25	100	\$2.85
Q4525075	ProPEX Brass Male Threaded Adapter, 1/2" PEX x 3/4" NPT	25	100	\$5.10
Q4527575	ProPEX Brass Male Threaded Adapter, 3/4" PEX x 3/4" NPT	25	100	\$5.05
Q4527510	ProPEX Brass Male Threaded Adapter, 3/4" PEX x 1" NPT	10	100	\$8.40
Q4521075	ProPEX Brass Male Threaded Adapter, 1" PEX x 3/4" NPT	10	100	\$7.10
Q4521010	ProPEX Brass Male Threaded Adapter, 1" PEX x 1" NPT	10	100	\$10.10
Q4522020	ProPEX Brass Male Threaded Adapter, 2" PEX x 2" NPT	5	-	\$89.65

## ProPEX Brass Male Threaded Adapter



ProPEX Brass Female Threaded Adapter connects Wirsbo AQUAPEX tubing to female NPT threads and are intended as transition fittings from metal to PEX.

**Note:** ProPEX Tool is required. ProPEX Rings sold separately.

Part No.	Part Description	Pkg. Qty.	Case Qty.	List Price/Ea.
Q4575050	ProPEX Brass Female Threaded Adapter, 1/2" PEX x 1/2" NPT	25	100	\$5.80
Q4575075	ProPEX Brass Female Threaded Adapter, 1/2" PEX x 3/4" NPT	25	100	\$6.35
Q4577575	ProPEX Brass Female Threaded Adapter, 3/4" PEX x 3/4" NPT	25	100	\$6.50
Q4577510	ProPEX Brass Female Threaded Adapter, 3/4" PEX x 1" NPT	10	100	\$15.15
Q4571075	ProPEX Brass Female Threaded Adapter, 1" PEX x 3/4" NPT	10	100	\$11.10
Q4571010	ProPEX Brass Female Threaded Adapter, 1" PEX x 1" NPT	10	100	\$13.75
Q4572020	ProPEX Brass Female Threaded Adapter, 2" PEX x 2" NPT	5	-	\$151.65

## ProPEX Brass Female Threaded Adapter



ProPEX Brass Sweat Adapter transitions Wirsbo AQUAPEX tubing to copper pipe.

**Note:** ProPEX Tool is required. ProPEX Rings sold separately.

Part No.	Part Description	Pkg. Qty.	Case Qty.	List Price/Ea.
Q4513850	ProPEX Brass Sweat Adapter, 3/8" PEX x 1/2" Copper	25	100	\$2.95
Q4515050	ProPEX Brass Sweat Adapter, 1/2" PEX x 1/2" Copper	25	100	\$2.05
Q4515075	ProPEX Brass Sweat Adapter, 1/2" PEX x 3/4" Copper	25	100	\$4.00
Q4517550	ProPEX Brass Sweat Adapter, 3/4" PEX x 1/2" Copper	25	100	\$4.45
Q4517575	ProPEX Brass Sweat Adapter, 3/4" PEX x 3/4" Copper	25	100	\$4.60
Q4517510	ProPEX Brass Sweat Adapter, 3/4" PEX x 1" Copper	10	100	\$7.05
Q4511010	ProPEX Brass Sweat Adapter, 1" PEX x 1" Copper	10	100	\$7.15
Q4512020	ProPEX Brass Sweat Adapter, 2" PEX x 2" Copper	5	-	\$74.40

## ProPEX Brass Sweat Adapter



# Uponor Plumbing Systems

## ProPEX Brass Fitting Adapter



ProPEX Brass Fitting Adapter transitions Wirsbo AQUAPEX tubing to copper fittings.

**Note:** ProPEX Tool is required. ProPEX Rings sold separately.

Part No.	Part Description	Pkg. Qty.	Case Qty.	List Price/Ea.
Q4503850	ProPEX Brass Fitting Adapter, 3/8" PEX x 1/2" Copper	25	100	\$2.80
Q4505050	ProPEX Brass Fitting Adapter, 1/2" PEX x 1/2" Copper	25	100	\$2.00
Q4505075	ProPEX Brass Fitting Adapter, 1/2" PEX x 3/4" Copper	25	100	\$3.40
Q4507550	ProPEX Brass Fitting Adapter, 3/4" PEX x 1/2" Copper	25	100	\$3.95
Q4507575	ProPEX Brass Fitting Adapter, 3/4" PEX x 3/4" Copper	25	100	\$4.25
Q4507510	ProPEX Brass Fitting Adapter, 3/4" PEX x 1" Copper	10	100	\$5.20
Q4501010	ProPEX Brass Fitting Adapter, 1" PEX x 1" Copper	10	100	\$7.65
Q4502020	ProPEX Brass Fitting Adapter, 2" PEX x 2" Copper	5	-	\$66.15

## ProPEX Brass Plug



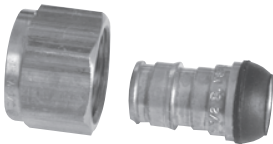
ProPEX Brass Plug temporarily or permanently terminates the end of Wirsbo AQUAPEX tubing.

**Note:** ProPEX Tool is required. ProPEX Rings sold separately.

Part No.	Part Description	Pkg. Qty.	Case Qty.	List Price/Ea.
Q4533838	ProPEX Brass Plug for 3/8" PEX	25	100	\$2.45
* Q4535050	ProPEX Brass Plug for 1/2" PEX	25	100	\$1.75
* Q4537575	ProPEX Brass Plug for 3/4" PEX	25	100	\$3.45
* Q4531000	ProPEX Brass Plug for 1" PEX	10	100	\$8.05
* Q4532000	ProPEX Brass Plug for 2" PEX	5	-	\$92.50

\* Engineered plastic alternate available in EP section.

## ProPEX Brass Swivel Faucet Adapter



ProPEX Brass Swivel Faucet Adapter connects 3/8" or 1/2" Wirsbo AQUAPEX tubing to male NPSM faucet connections.

**Note:** ProPEX Tool is required. ProPEX Rings sold separately.

Part No.	Part Description	Pkg. Qty.	Case Qty.	List Price/Ea.
Q4653850	ProPEX Brass Swivel Faucet Adapter, 3/8" PEX x 1/2" NPSM	25	100	\$7.50
* Q4655050	ProPEX Brass Swivel Faucet Adapter, 1/2" PEX x 1/2" NPSM	25	100	\$5.10
Q2120375	ProPEX Brass Swivel Adapter with plastic nut, 3/8" PEX x 1/2" NPSM	25	100	\$4.80

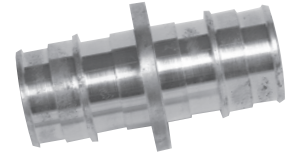
\* Engineered plastic alternate available in EP section.

# Uponor Plumbing Systems

ProPEX DZR Brass Coupling makes PEX-to-PEX connections. DZR fittings are safe for direct burial in soil.

## ProPEX DZR Brass Coupling

**Note:** ProPEX Tool is required. ProPEX Rings sold separately.



Part No.	Part Description	Each Qty.	Pkg. Qty.	List Price/Ea.
* G4547575	ProPEX DZR Brass Coupling, 3/4" PEX x 3/4" PEX EP	-	10	\$8.30
* G4541010	ProPEX DZR Brass Coupling, 1" PEX x 1" PEX EP	-	10	\$11.60
G4541307	ProPEX DZR Brass Coupling, 1 1/4" PEX x 3/4" PEX	-	10	\$19.75
G4541310	ProPEX DZR Brass Coupling, 1 1/4" PEX x 1" PEX	-	10	\$23.70
G4541313	ProPEX DZR Brass Coupling, 1 1/4" PEX x 1 1/4" PEX	-	10	\$25.75
G4541507	ProPEX DZR Brass Coupling, 1 1/2" PEX x 3/4" PEX	-	10	\$28.70
G4541510	ProPEX DZR Brass Coupling, 1 1/2" PEX x 1" PEX	-	10	\$29.75
G4541513	ProPEX DZR Brass Coupling, 1 1/2" PEX x 1 1/4" PEX	-	10	\$31.30
G4541515	ProPEX DZR Brass Coupling, 1 1/2" PEX x 1 1/2" PEX	-	10	\$39.65
<b>NEW</b> G4542020	ProPEX DZR Brass Coupling, 2" PEX x 2" PEX	-	5	\$151.95

\* Engineered plastic alternate available in EP section.

ProPEX DZR Brass Elbow makes tight 90-degree connections for Wirsbo AQUAPEX tubing in supply and return mains. DZR brass is safe for direct burial in soil.

## ProPEX DZR Brass Elbow

**Note:** ProPEX Tool is required. ProPEX Rings sold separately.



Part No.	Part Description	Each Qty.	Pkg. Qty.	List Price/Ea.
* G4711250	ProPEX DZR Brass Elbow, 1 1/4" PEX x 1 1/4" PEX EP	-	10	\$35.20
* G4711500	ProPEX DZR Brass Elbow, 1 1/2" PEX x 1 1/2" PEX EP	-	10	\$65.20

\* Engineered plastic alternate available in EP section.

ProPEX DZR Brass Tee makes diverting connections for Wirsbo AQUAPEX tubing in supply and return mains. Branch size is listed last in the part description. DZR brass is safe for direct burial in soil.

## ProPEX DZR Brass Tee

**Note:** ProPEX Tool is required. ProPEX Rings sold separately.



Part No.	Part Description	Each Qty.	Pkg. Qty.	List Price/Ea.
* G4701250	ProPEX DZR Brass Tee, 1 1/4" PEX x 1 1/4" PEX x 1 1/4" EP	-	10	\$58.65
* G4701500	ProPEX DZR Brass Tee, 1 1/2" PEX x 1 1/2" PEX x 1 1/2" EP	-	10	\$56.45

\* Engineered plastic alternate available in EP section.

# Uponor Plumbing Systems

## ProPEX DZR Brass Reducing Tee



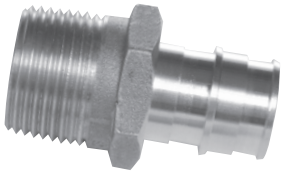
ProPEX DZR Brass Reducing Tee makes diverting connections for Wirsbo AQUAPEX tubing in supply and return mains. Branch size is listed last in the part description. DZR Brass Fittings are safe for direct burial in soil.

**Note:** ProPEX Tool is required. ProPEX Rings sold separately.

Part No.	Part Description	Each Qty.	Pkg. Qty.	List Price/Ea.
* G4701317	ProPEX DZR Brass Reducing Tee, 1¼" PEX x 1" PEX x ¾" PEX	-	10	\$58.70
* G4701311	ProPEX DZR Brass Reducing Tee, 1¼" PEX x 1" PEX x 1" PEX	-	10	\$59.50
* G4701337	ProPEX DZR Brass Reducing Tee, 1¼" PEX x 1¼" PEX x ¾" PEX	-	10	\$41.55
* G4701331	ProPEX DZR Brass Reducing Tee, 1¼" PEX x 1¼" PEX x 1" PEX	-	10	\$41.90
G4701537	ProPEX DZR Brass Reducing Tee, 1½" PEX x 1¼" PEX x ¾" PEX	-	10	\$76.45
G4701531	ProPEX DZR Brass Reducing Tee, 1½" PEX x 1¼" PEX x 1" PEX	-	10	\$75.30
G4701533	ProPEX DZR Brass Reducing Tee, 1½" PEX x 1¼" PEX x 1¼" PEX	-	10	\$79.10
* G4701557	ProPEX DZR Brass Reducing Tee, 1½" PEX x 1½" PEX x ¾" PEX	-	10	\$81.55
* G4701551	ProPEX DZR Brass Reducing Tee, 1½" PEX x 1½" PEX x 1" PEX	-	10	\$76.20
* G4701553	ProPEX DZR Brass Reducing Tee, 1½" PEX x 1½" PEX x 1¼" PEX	-	10	\$94.40


\* Engineered plastic alternate available in EP section.

## ProPEX DZR Brass Male Threaded Adapter



ProPEX DZR Brass Male Threaded Adapter connects Wirsbo AQUAPEX tubing to male NPT threads and are intended as transition fittings from metal to PEX. DZR Brass Fittings are safe for direct burial in soil.

**Note:** ProPEX Tool is required. ProPEX Rings sold separately.

Part No.	Part Description	Each Qty.	Pkg. Qty.	List Price/Ea.
G4527575	ProPEX DZR Brass Male Threaded Adapter, ¾" PEX x ¾" NPT	-	10	\$11.55
G4521010	ProPEX DZR Brass Male Threaded Adapter, 1" PEX x 1" NPT	-	10	\$16.25
G4521313	ProPEX DZR Brass Male Threaded Adapter, 1¼" PEX x 1¼" NPT	-	10	\$24.60
G4521515	ProPEX DZR Brass Male Threaded Adapter, 1½" PEX x 1½" NPT	-	10	\$34.05
 G4522020	ProPEX DZR Brass Male Threaded Adapter, 2" PEX x 2" NPT	-	5	\$149.70

## ProPEX DZR Brass Female Threaded Adapter



ProPEX DZR Brass Female Threaded Adapters connect Wirsbo AQUAPEX tubing to female NPT threads and are intended as transition fittings from metal to PEX. DZR Brass Fittings are safe for direct burial in soil.

**Note:** ProPEX Tool is required. ProPEX Rings sold separately.

Part No.	Part Description	Each Qty.	Pkg. Qty.	List Price/Ea.
G4577575	ProPEX DZR Brass Female Threaded Adapter, ¾" PEX x ¾" NPT	-	10	\$14.75
G4571010	ProPEX DZR Brass Female Threaded Adapter, 1" PEX x 1" NPT	-	10	\$16.80
G4571313	ProPEX DZR Brass Female Threaded Adapter, 1¼" PEX x 1¼" NPT	-	10	\$38.65
G4571515	ProPEX DZR Brass Female Threaded Adapter, 1½" PEX x 1½" NPT	-	10	\$45.70

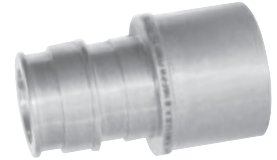
# Uponor Plumbing Systems

ProPEX DZR Brass Sweat Adapter transitions Wirsbo AQUAPEX tubing to copper pipe. DZR Brass Fittings are safe for direct burial in the soil.

**Note:** ProPEX Tool is required. ProPEX Rings sold separately.

Part No.	Part Description	Each Qty.	Pkg. Qty.	List Price/Ea.
G4517575	ProPEX DZR Brass Sweat Adapter, 3/4" PEX x 3/4" Copper	-	10	\$10.30
G4511010	ProPEX DZR Brass Sweat Adapter, 1" PEX x 1" Copper	-	10	\$13.65
G4511313	ProPEX DZR Brass Sweat Adapter, 1 1/4" PEX x 1 1/4" Copper	-	10	\$21.35
G4511515	ProPEX DZR Brass Sweat Adapter, 1 1/2" PEX x 1 1/2" Copper	-	10	\$30.70

**ProPEX DZR Brass Sweat Adapter**

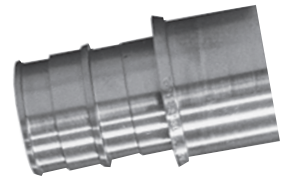


ProPEX DZR Brass Fitting Adapter transitions Wirsbo AQUAPEX tubing to copper fittings. DZR Brass Fittings are safe for direct burial in soil.

**Note:** ProPEX Tool is required. ProPEX Rings sold separately.

Part No.	Part Description	Each Qty.	Pkg. Qty.	List Price/Ea.
G4501313	ProPEX DZR Brass Fitting Adapter, 1 1/4" PEX x 1 1/4" Copper	-	10	\$18.80
G4501515	ProPEX DZR Brass Fitting Adapter, 1 1/2" PEX x 1 1/2" Copper	-	10	\$31.10

**ProPEX DZR Brass Fitting Adapter**



Stainless Steel Male Threaded Adapter transitions Wirsbo AQUAPEX tubing to reverse osmosis units. Due to the aggressive nature of conditioned water produced by reverse osmosis, de-ionization and distillation, Stainless Steel Fittings are manufactured from 316 stainless steel and fully comply with CSA B137.5.

**Note:** ProPEX Tool is required. ProPEX Rings sold separately.

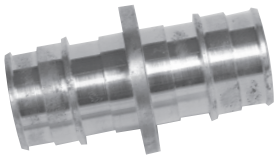
Part No.	Part Description	Each Qty.	Pkg. Qty.	List Price/Ea.
Q8525050	ProPEX Stainless Steel Male Threaded Adapter, 1/2" PEX x 1/2" NPT	-	25	\$20.00
Q8527575	ProPEX Stainless Steel Male Threaded Adapter, 3/4" PEX x 3/4" NPT	-	25	\$30.00
Q8521010	ProPEX Stainless Steel Male Threaded Adapter, 1" PEX x 1" NPT	-	10	\$45.00

**Stainless Steel Male Threaded Adapter**



# Uponor Plumbing Systems

## ProPEX Red Brass Coupling



ProPEX Red Brass Coupling makes PEX to PEX connections. Highly resistant to the affects of aggressive water conditions, published research has repeatedly demonstrated that the red brass is generally regarded as immune to dezincification and stress-corrosion cracking.

**Note:** ProPEX Tool is required. ProPEX Rings sold separately.

Part No.	Part Description	Pkg. Qty.	Case Qty.	List Price/Ea.
V4543850	ProPEX Red Brass Coupling, 3/8" PEX x 1/2" PEX	25	100	\$10.00

## ProPEX Red Brass Male Threaded Adapter



ProPEX Red Brass Male Threaded Adapter connects Wirsbo AQUAPEX tubing to male NPT threads and are intended as transition fittings from metal to PEX. Highly resistant to the effects of aggressive water conditions, published research has repeatedly demonstrated that red brass is generally regarded as immune to dezincification and stress-corrosion cracking. Red Brass fittings are safe for direct burial in soil in accordance with Uponor installation guidelines.

**Note:** ProPEX Tool is required. ProPEX Rings sold separately.

Part No.	Part Description	Pkg. Qty.	Case Qty.	List Price/Ea.
V4525050	ProPEX Red Brass Male Threaded Adapter, 1/2" PEX x 1/2" NPT	25	100	\$18.30
V4527575	ProPEX Red Brass Male Threaded Adapter, 3/4" PEX x 3/4" NPT	25	100	\$38.05

## ProPEX Red Brass Sweat Adapter



ProPEX Red Brass Sweat Adapter transitions Wirsbo AQUAPEX tubing to copper pipe. Highly resistant to the effects of aggressive water conditions, published research has repeatedly demonstrated that red brass is generally regarded as immune to dezincification and stress-corrosion cracking. Red Brass fittings are safe for direct burial in soil in accordance with Uponor installation guidelines.

**Note:** ProPEX Tool is required. ProPEX Rings sold separately.

Part No.	Part Description	Pkg. Qty.	Case Qty.	List Price/Ea.
V4515050	ProPEX Red Brass Sweat Adapter, 1/2" PEX x 1/2" Copper	25	100	\$17.40
V4517575	ProPEX Red Brass Sweat Adapter, 3/4" PEX x 3/4" Copper	25	100	\$35.80
V4511010	ProPEX Red Brass Sweat Adapter, 1" PEX x 1" Copper	10	100	\$48.75
V4511313	ProPEX Red Brass Sweat Adapter, 1 1/4" PEX x 1 1/4" Copper	10	-	\$101.75
V4511515	ProPEX Red Brass Sweat Adapter, 1 1/2" PEX x 1 1/2" Copper	10	-	\$117.45

## ProPEX Red Brass Fitting Adapter



ProPEX Red Brass Fitting Adapter connects Wirsbo AQUAPEX tubing to copper fittings. Highly resistant to the effects of aggressive water conditions, published research has repeatedly demonstrated that red brass is generally regarded as immune to dezincification and stress-corrosion cracking. Red Brass fittings are safe for direct burial in soil in accordance with Uponor installation guidelines.

**Note:** ProPEX Tool is required. ProPEX Rings sold separately.

Part No.	Part Description	Pkg. Qty.	Case Qty.	List Price/Ea.
V4505050	ProPEX Red Brass Fitting Adapter, 1/2" PEX x 1/2" Copper	25	100	\$16.35
V4507575	ProPEX Red Brass Fitting Adapter, 3/4" PEX x 3/4" Copper	25	100	\$32.30

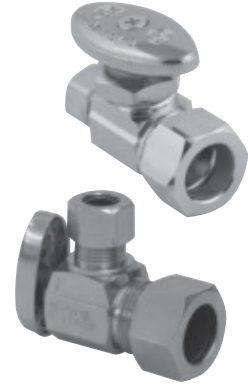
# Uponor Plumbing Systems

Compression Stop Valve is chrome-plated and available in angle or straight stop configurations. Stop valves are used for point-of-use shut-off at the fixture. Both valve styles connect 1/2" Wirsbo AQUAPEX tubing to 3/8" o.d. risers.

**Note:** Compression inserts and rings are included. Only use stainless steel inserts supplied by Uponor with these compression stop valves. Substitution can result in valve connection failure.

Part No.	Part Description	Pkg. Qty.	Case Qty.	List Price/Ea.
F4410500	Compression Angle Stop Valve for 1/2" PEX	10	100	\$12.60
F4420500	Compression Straight Stop Valve for 1/2" PEX	10	100	\$15.15
F5400250	1/4" Insert (stainless steel)	10	100	\$0.70
F5400500	1/2" Insert (stainless steel)	10	100	\$1.25
F4440500	1/2" Compression Ring (brass)	10	100	\$0.95

## Brass Compression Stop Valve



ProPEX Full-port quarter-turn Stop Valve is chrome-plated and available in either angle or straight stop configurations. Stop valve is used for point-of-use shut-off at the fixture. Both valve styles connect 1/2" Wirsbo AQUAPEX tubing to 3/8" o.d. risers.

**Note:** Compression inserts and rings for the 3/8" riser connections are included with the valves. ProPEX Tool is required. ProPEX Rings sold separately.

Part No.	Part Description	Pkg. Qty.	Case Qty.	List Price/Ea.
Q4855038	ProPEX Full-port Angle Stop Valve for 1/2" PEX	10	100	\$9.80
Q4865038	ProPEX Full-port Straight Stop Valve for 1/2" PEX	10	100	\$10.00

## ProPEX Full-port Brass Stop Valve

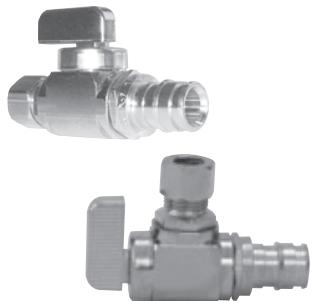


ProPEX quarter-turn Stop Valve is chrome-plated and available in either angle or straight stop configurations. Stop valve is used for point-of-use shut-off at the fixture. Both valve styles connect 1/2" Wirsbo AQUAPEX tubing to 3/8" o.d. risers.

**Note:** Compression inserts and rings for the 3/8" riser connections are included with the valves. ProPEX Tool is required. ProPEX Rings sold separately.

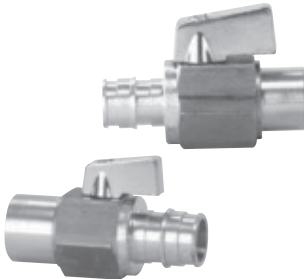
Part No.	Part Description	Pkg. Qty.	Case Qty.	List Price/Ea.
Q4885038	ProPEX Straight Stop Valve for 1/2" PEX	10	100	\$12.65
Q4895038	ProPEX Angle Stop Valve for 1/2" PEX	10	100	\$12.85

## ProPEX Stop Valve



# Uponor Plumbing Systems

## Brass ProPEX to Copper Ball Valve

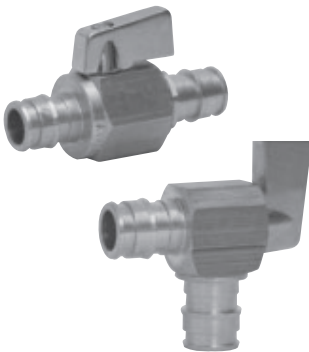


ProPEX to Copper quarter-turn Ball Valve (brass) features a shut-off valve for 3/8", 1/2" and 3/4" Wirsbo AQUAPEX tubing to 1/2" and 3/4" copper pipe. This fitting is not compatible with applications using glycol.

**Note:** ProPEX tool is required. ProPEX Rings sold separately.

Part No.	Part Description	Pkg. Qty.	Case Qty.	List Price/Ea.
Q4803850	ProPEX Ball Valve (large bore), 3/8" PEX x 1/2" Copper Adapter	10	100	\$13.65
Q4805050	ProPEX Ball Valve (large bore), 1/2" PEX x 1/2" Copper Adapter	10	100	\$14.45
Q4807575	ProPEX Ball Valve (large bore), 3/4" PEX x 3/4" Copper Adapter	10	100	\$26.20

## Brass ProPEX to ProPEX Ball Valve



ProPEX Ball Valve (brass) is intended as an in-line, shut-off valve for 3/8", 1/2", 3/4" and 1" PEX. ProPEX Angle Ball Valve (brass) features a quarter-turn shut-off valve for 3/8" and 1/2" PEX. This fitting is not compatible with applications using glycol.

**Note:** ProPEX tool is required. ProPEX Rings sold separately.

Part No.	Part Description	Pkg. Qty.	Case Qty.	List Price/Ea.
Q4815050	ProPEX Ball Valve (large bore), 1/2" PEX x 1/2" PEX	10	100	\$16.50
Q4817575	ProPEX Ball Valve (large bore), 3/4" PEX x 3/4" PEX	10	100	\$25.50
Q4827575	ProPEX Ball Valve (full port), 3/4" PEX x 3/4" PEX	10	100	\$36.35
Q4821010	ProPEX Ball Valve (full port), 1" PEX x 1" PEX	10	100	\$44.05
Q4875050	ProPEX Angle Ball Valve, 1/2" PEX x 1/2" PEX	10	100	\$13.85
Q4893838	ProPEX Angle Ball Valve, 3/8" PEX x 3/8" PEX	10	100	\$15.80

## Brass ProPEX to MIP Ball Valve



ProPEX Ball Valve (brass) features a shut-off valve between 1/2" Wirsbo AQUAPEX tubing and 1/2" MIP.

**Note:** ProPEX tool is required. ProPEX Rings sold separately.

Part No.	Part Description	Pkg. Qty.	Case Qty.	List Price/Ea.
Q4795050	ProPEX Ball Valve, 1/2" PEX x 1/2" MIP	10	100	\$16.85

# Uponor Plumbing Systems

Lav and Closet Risers are installed with delrin ring (included).

**Note:** Uponor recommends Riser Washers for hot-water applications.

Part No.	Part Description	Each Qty.	Pkg. Qty.	List Price/Ea.
F1072512	3/8" O.D. x 12" Lav Riser	-	100	\$1.20
F1072520	3/8" O.D. x 20" Lav Riser	-	100	\$1.70
F1072530	3/8" O.D. x 30" Lav Riser	-	100	\$2.25
F1072536	3/8" O.D. x 36" Lav Riser	-	100	\$2.90
F1082512	3/8" O.D. x 12" Closet Riser	-	100	\$1.35
F1082520	3/8" O.D. x 20" Closet Riser	-	100	\$1.70
Q4440250	3/8" I.D. Delrin Ring, replacement part	-	50	\$0.10
Q4300250	Riser Washer, 100/bag	1	-	\$27.95

## Risers



ProPEX Copper Tub Ell provides a 90-degree transition from tub and shower valve to Wirsbo AQUAPEX tubing.

**Note:** ProPEX Tool is required. ProPEX Rings sold separately.

Part No.	Part Description	Pkg. Qty.	Case Qty.	List Price/Ea.
Q2885050	ProPEX Copper Tub Ell, 1/2" PEX x 1/2" Copper (3" x 4")	25	100	\$8.75
Q2875050	ProPEX Copper Tub Ell, 1/2" PEX x 1/2" Copper (3" x 6")	25	100	\$9.25

## ProPEX Copper Tub Ell



ProPEX Copper Stub Ell provides a 90-degree transition from Wirsbo AQUAPEX tubing to copper.

**Note:** ProPEX Tool is required. ProPEX Rings sold separately.

Part No.	Part Description	Pkg. Qty.	Case Qty.	List Price/Ea.
Q2863850	ProPEX Copper Stub Ell, 3/8" PEX x 1/2" Copper (3 1/2" x 8")	25	100	\$13.95
Q2865050	ProPEX Copper Stub Ell, 1/2" PEX x 1/2" Copper (3 1/2" x 8")	25	100	\$9.45
Q2895050	ProPEX Copper Stub Ell, 1/2" PEX x 1/2" Copper (8" x 13")	25	100	\$14.90
Q2855050	ProPEX Copper Stub Ell, 1/2" PEX x 1/2" Copper (13" x 8")	25	100	\$14.40
Q2897575	ProPEX Copper Stub Ell, 3/4" PEX x 3/4" Copper (4" x 8")	25	100	\$22.85

## ProPEX Copper Stub Ell



ProPEX Copper Straight Stub provides a straight transition from Wirsbo AQUAPEX tubing to copper.

**Note:** ProPEX Tool is required. ProPEX Rings sold separately.

Part No.	Part Description	Pkg. Qty.	Case Qty.	List Price/Ea.
Q2935050	ProPEX Copper Straight Stub, 1/2" PEX x 1/2" Copper (8")	25	100	\$10.80
Q2945050	ProPEX Copper Straight Stub, 1/2" PEX x 1/2" Copper (15")	25	100	\$12.10

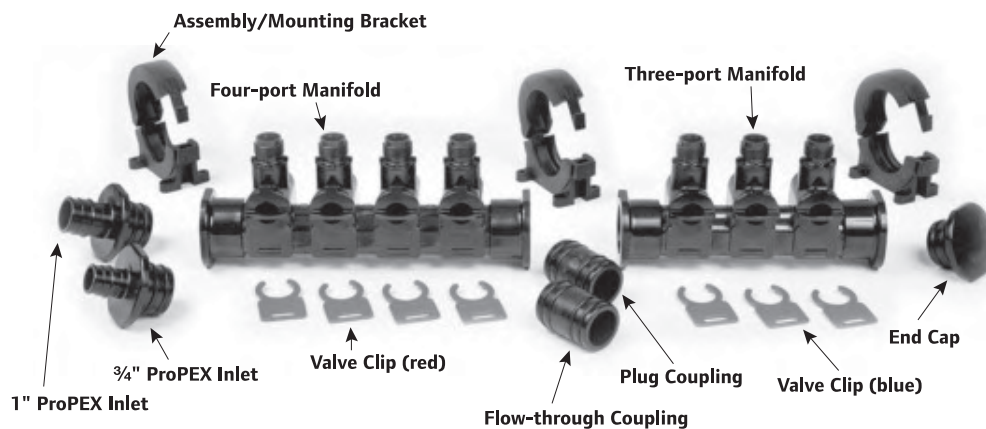
## ProPEX Copper Straight Stub



# Uponor Plumbing Systems

## Engineered Plastic (EP) Valved Manifolds

Improve the ease and quality of your plumbing installations with the EP Valved Manifold by Uponor. Made from advanced engineered plastic (EP) materials, it is the only valved manifold on the market that can offer what's really important to a plumber — total flexibility and serviceability. The manifolds can be joined to other EP Valved Manifolds using manifold couplings, and can be supplied with 3/4" or 1" ProPEX inlets.



### EP Valved Manifold



Available with three or four NPSM or ProPEX outlets, the EP Valved Manifold is suitable for hot- and cold-water distribution systems. The kit includes manifold, red and blue valve clips, labels, valve-turning tool and installation instructions.

**Note:** Manifold inlets, couplings, end caps, swivel adapters and assembly/mounting brackets sold separately.

Part No.	Part Description	Each Qty.	Pkg. Qty.	List Price/Ea.
Q2100300	EP Valved Manifold Kit A, 3 outlets with 1/2" NPSM	1	-	\$72.05
Q2100400	EP Valved Manifold Kit B, 4 outlets with 1/2" NPSM	1	-	\$86.45
Q2110300	EP Valved Manifold Kit C, 3 outlets with 1/2" ProPEX	1	-	\$72.05
Q2110400	EP Valved Manifold Kit D, 4 outlets with 1/2" ProPEX	1	-	\$86.45

## EP Valved Manifold Accessories

ProPEX EP Valved Manifold Inlet connects 3/4" and 1" Wirsbo AQUAPEX tubing to the manifold. The EP Valved Manifold End Cap seals the unused inlet on the manifold.

**Note:** ProPEX Tool is required. ProPEX Rings and Assembly/Mounting Brackets are required and sold separately.

Part No.	Part Description	Each Qty.	Pkg. Qty.	List Price/Ea.
Q2120750	EP Valved Manifold 3/4" ProPEX Inlet	-	10	\$10.70
Q2121000	EP Valved Manifold 1" ProPEX Inlet	-	10	\$11.55
Q2121250	EP Valved Manifold End Cap	-	10	\$10.70

### EP Valved Manifold ProPEX Inlet



The EP Valved Manifold Coupling joins manifold sections.

**Note:** Assembly/Mounting Brackets are required and sold separately.

Part No.	Part Description	Each Qty.	Pkg. Qty.	List Price/Ea.
Q2121313	EP Valved Manifold Flow-through Coupling	-	10	\$12.55
Q2121251	EP Valved Manifold Stop Coupling	-	10	\$14.65

### EP Valved Manifold Coupling



The EP Valved Manifold Assembly/Mounting Bracket assembles manifold sections and mounts the manifold to the wall or stud. One bracket is required per manifold joint.

Part No.	Part Description	Each Qty.	Pkg. Qty.	List Price/Ea.
Q2120020	EP Valved Manifold Assembly/Mounting Bracket	-	10	\$6.70

### EP Valved Manifold Assembly/Mounting Bracket



Replacement EP Valved Manifold Accessories.

**Note:** Valve clips are required and sold separately.

Part No.	Part Description	Each Qty.	Pkg. Qty.	List Price/Ea.
Q2120050	EP Valved Manifold Valve Cylinder with O-rings	-	10	\$10.60
Q2120010	EP Valved Manifold Valve-turning Tool, replacement part	-	10	\$2.80
Q2120001	EP Valved Manifold Red Valve Clip	-	100	\$1.00
Q2120002	EP Valved Manifold Blue Valve Clip	-	100	\$1.00

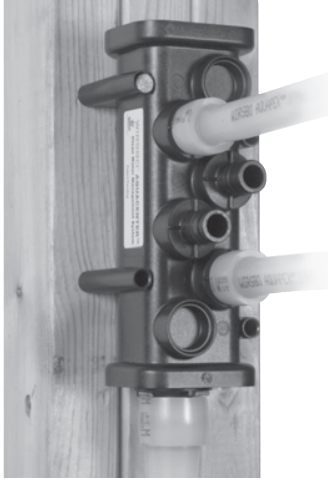
### EP Valved Manifold Accessories



# Uponor Plumbing Systems

## EP Valveless Manifolds

### EP Valveless Manifold



The EP Valveless Branch Manifold is available with 3/4" or 1" inlets and 4, 6 or 8, 1/2" ProPEX outlets. The manifold is made of engineered plastic (EP), the same durable material used in Uponor's EP fittings.

**Note:** ProPEX Tool is required. ProPEX Rings sold separately.

Part No.	Part Description	Each Qty.	Pkg. Qty.	List Price/Ea.
Q2200400	EP Valveless Branch Manifold, 4 outlets, 3/4" ProPEX	1	-	\$34.75
Q2200600	EP Valveless Branch Manifold, 6 outlets, 3/4" ProPEX	1	-	\$45.50
◀ Q2200800	EP Valveless Branch Manifold, 8 outlets, 3/4" ProPEX, replacement part is Q2287550 on page 123	1	-	\$61.95
◀ Q2201000	EP Valveless Branch Manifold, 10 outlets, 3/4" ProPEX, replacement part is Q2101051 or Q2101000 on page 123	1	-	\$67.10
◀ Q2201200	EP Valveless Branch Manifold, 12 outlets, 3/4" ProPEX, replacement part is Q2121051 on page 123	1	-	\$73.10
Q2210800	EP Valveless Branch Manifold, 8 outlets, 1" ProPEX	1	-	\$62.20
◀ Q2211000	EP Valveless Branch Manifold, 10 outlets, 1" ProPEX, replacement part is Q2101051 or Q2101000 on page 123	1	-	\$67.35
◀ Q2211200	EP Valveless Branch Manifold, 12 outlets, 1" ProPEX, replacement part is Q2121051 on page 123	1	-	\$73.35

### EP Flow-through Valveless Manifold



The EP Flow-through Valveless Manifold is available in 8, 10 or 12, 1/2" ProPEX outlets. The manifold comes with either 1" ProPEX inlets or 3/4" and 1" ProPEX inlets. All outlets are 1/2" ProPEX connections. The manifold is made of EP, the same durable material used in Uponor's EP fittings.

**Note:** ProPEX Tool is required. ProPEX Rings sold separately.

Part No.	Part Description	Each Qty.	Pkg. Qty.	List Price/Ea.
◀ Q2240400	EP Flow-through Valveless Manifold, 4 outlets, 1" x 3/4" ProPEX, replacement part is Q2241057 on page 121	1	-	\$42.60
◀ Q2240600	EP Flow-through Valveless Manifold, 6 outlets, 1" x 3/4" ProPEX, replacement part is Q2261057 on page 121	1	-	\$51.10
Q2240800	EP Flow-through Valveless Manifold, 8 outlets, 1" x 3/4" ProPEX	1	-	\$73.50
Q2241000	EP Flow-through Valveless Manifold, 10 outlets, 1" x 3/4" ProPEX	1	-	\$82.95
Q2241200	EP Flow-through Valveless Manifold, 12 outlets, 1" x 3/4" ProPEX	1	-	\$84.05
◀ Q2250400	EP Flow-through Valveless Manifold, 4 outlets, 1" x 1" ProPEX, replacement part is *Q2241057 on page 121 *(or Q2261051 & cap extra ports)	1	-	\$45.40
◀ Q2250600	EP Flow-through Valveless Manifold, 6 outlets, 1" x 1" ProPEX, replacement part is Q2261051 on page 121	1	-	\$54.45

◀ Discontinued item; available while quantities last. Please contact Uponor Customer Service for availability. All sales are final.

## ProPEX Copper Manifolds

ProPEX 1" Copper Branch Manifold features 1/2" ProPEX outlets brazed to manifold trunk. Sweat manifolds together to create the desired number of outlets. Do not exceed acceptable flow rates for 1-inch nominal copper.

**Note:** ProPEX Tool is required. ProPEX Rings sold separately.

Part No.	Part Description	Each Qty.	Pkg. Qty.	List Price/Ea.
Q2801050	ProPEX 1" Copper Branch Manifold with 1/2" ProPEX outlets, 4 outlets	1	-	\$41.90
Q2811050	ProPEX 1" Copper Branch Manifold with 1/2" ProPEX outlets, 6 outlets	1	-	\$56.70
Q2821050	ProPEX 1" Copper Branch Manifold with 1/2" ProPEX outlets, 8 outlets	1	-	\$71.40
Q2831050	ProPEX 1" Copper Branch Manifold with 1/2" ProPEX outlets, 10 outlets	1	-	\$89.35
Q2841050	ProPEX 1" Copper Branch Manifold with 1/2" ProPEX outlets, 12 outlets	1	-	\$109.05

**ProPEX 1" (type L) Copper Branch Manifold**



ProPEX 1" Copper Branch Manifold features 1/2" ProPEX outlets brazed to manifold trunk and one 3/4" ProPEX fitting brazed to manifold inlet.

**Note:** ProPEX Tool is required. ProPEX Rings sold separately.

Part No.	Part Description	Each Qty.	Pkg. Qty.	List Price/Ea.
Q2905050	ProPEX 1" Copper Branch Manifold, 3 outlets, 3/4" ProPEX Inlet, replacement part is Q2237550 on page 121	1	-	\$50.10
Q2807550	ProPEX 1" Copper Branch Manifold, 4 outlets, 3/4" ProPEX Inlet	1	-	\$51.60
Q2817550	ProPEX 1" Copper Branch Manifold, 6 outlets, 3/4" ProPEX Inlet	1	-	\$79.35
Q2827550	ProPEX 1" Copper Branch Manifold, 8 outlets, 3/4" ProPEX Inlet	1	-	\$99.50
Q2837550	ProPEX 1" Copper Branch Manifold, 10 outlets, 3/4" ProPEX Inlet	1	-	\$107.95
Q2847550	ProPEX 1" Copper Branch Manifold, 12 outlets, 3/4" ProPEX Inlet	1	-	\$111.40

**ProPEX 1" (type L) Copper Branch Manifold with 3/4" ProPEX Inlet**



ProPEX 1" Copper Flow-through Manifold features 1/2" ProPEX outlets brazed to manifold trunk and two 3/4" ProPEX fittings brazed to manifold ends.

**Note:** ProPEX Tool is required. ProPEX Rings sold separately.

Part No.	Part Description	Each Qty.	Pkg. Qty.	List Price/Ea.
Q2807557	ProPEX 1" Copper Flow-through Manifold, 4 outlets, 3/4" x 3/4" ProPEX, replacement part is Q2247557 on page 121	1	-	\$62.80
Q2817557	ProPEX 1" Copper Flow-through Manifold, 6 outlets, 3/4" x 3/4" ProPEX, replacement part is Q2267557 on page 121	1	-	\$83.80
Q2827557	ProPEX 1" Copper Flow-through Manifold, 8 outlets, 3/4" x 3/4" ProPEX	1	-	\$104.80
Q2837557	ProPEX 1" Copper Flow-through Manifold, 10 outlets, 3/4" x 3/4" ProPEX	1	-	\$129.50
Q2847557	ProPEX 1" Copper Flow-through Manifold, 12 outlets, 3/4" x 3/4" ProPEX	1	-	\$137.00

**ProPEX 1" (type L) Copper Flow-through Manifold**



◀ Discontinued item; available while quantities last. Please contact Uponor customer service for availability. All sales are final.

# Uponor Plumbing Systems

## ProPEX 1" (type L) Copper Valved Manifold



ProPEX 1" Copper Valved Manifold features 1/2" ProPEX valve connections allowing for simple and easy isolation of individual loops. Sections can sweat together to extend the number of outlets using a standard 1" copper coupling. Both 1" ends are copper pipe size and require a copper end cap, coupling or transition fitting to make the proper system connection. Do not exceed accepted flow rates for 1-inch nominal copper.

**Note:** ProPEX Tool is required. ProPEX Rings sold separately.

Part No.	Part Description	Each Qty.	Pkg. Qty.	List Price/Ea.
Q2500400	1" Copper Manifold with 1/2" ProPEX Ball Valve, 4 outlets	1	-	\$122.10
Q2500600	1" Copper Manifold with 1/2" ProPEX Ball Valve, 6 outlets	1	-	\$174.45
Q2500800	1" Copper Manifold with 1/2" ProPEX Ball Valve, 8 outlets	1	-	\$228.00
Q2501000	1" Copper Manifold with 1/2" ProPEX Ball Valve, 10 outlets	1	-	\$279.65
Q2501200	1" Copper Manifold with 1/2" ProPEX Ball Valve, 12 outlets	1	-	\$329.55

## ProPEX 1" (type L) Copper Manifold



The ProPEX 1" Copper Manifold is 6 feet in length and features 24 individual 1/2" ProPEX outlets spaced three inches on center. The manifold is suitable for cutting to any length necessary to achieve the desired number of outlets.

**Note:** ProPEX Tool is required. ProPEX Rings sold separately.

Part No.	Part Description	Each Qty.	Pkg. Qty.	List Price/Ea.
Q2512450	1" x 6' Copper Manifold with 1/2" ProPEX, 24 outlets	1	-	\$320.95

## Type L Copper Valveless Manifold



Copper Valveless Manifold with 1/2" or 3/4" nominal branches available in various outlet configurations. The manifolds can join together to create the desired number of outlets. Branches are brazed to manifold trunk. Use Uponor QS-style or ProPEX 1/2" or 3/4" Brass Sweat Adapters to make connections to 3/8", 1/2", 5/8" and 3/4" Wirsbo AQUAPEX tubing. All manifolds require a 1-inch copper end cap and applicable transition fitting.

**Note:** Maximum recommended flow rates for these manifolds are: 2-inch, 45 gpm; 1 1/2-inch, 21 gpm; 1-inch, 9 gpm.

Part No.	Part Description	Each Qty.	Pkg. Qty.	List Price/Ea.
F2802075	2" x 6' Copper Valveless Manifold with 24 outlets, 3/4" sweat	-	2	\$581.90
F2801575	1 1/2" x 6' Copper Valveless Manifold with 24 outlets, 3/4" sweat	-	3	\$402.75
F2741050	1" Copper Valveless Manifold, 2 outlets, 1/2" sweat, 1 1/2" on center	1	-	\$37.95
F2751050	1" Copper Valveless Manifold, 3 outlets, 1/2" sweat, 1 1/2" on center	1	-	\$39.00
F2761050	1" Copper Valveless Manifold, 4 outlets, 1/2" sweat, 1 1/2" on center	1	-	\$42.20
F2741075	1" Copper Valveless Manifold, 2 outlets, 3/4" sweat, 1 1/2" on center	1	-	\$42.05
F2751075	1" Copper Valveless Manifold, 3 outlets, 3/4" sweat, 1 1/2" on center	1	-	\$42.65

# Uponor Plumbing Systems

The D'MAND® Hot Water Delivery System is an integral part of the Uponor plumbing layout, which is designed to maximize energy and water savings, minimize connections, and reduce hot water delivery times. The D'MAND hot water delivery system provides two different system pumps: Model 100 and Model 200. The Model 100 supports plumbing systems with the farthest fixture less than 100 feet from the pump location. The Model 200 supports plumbing systems with the farthest fixture more than 100 feet from the pump location. The D'MAND system requires either an Activation Button or Motion Sensor to activate the system.

## D'MAND® Hot Water Delivery System



Part No.	Part Description	Each Qty.	Pkg. Qty.	List Price/Ea.
Q6700070	D'MAND Model 100	1	-	\$563.10
Q6700002	D'MAND Model 200	1	-	\$926.65

The D'MAND Activation Button is used in areas where the homeowner wants to select when the D'MAND Hot Water Delivery System is activated. Two-wire, low-voltage thermostat wire connects the activation button to the control on the D'MAND pump.

## D'MAND Activation Button



Part No.	Part Description	Each Qty.	Pkg. Qty.	List Price/Ea.
Q6700101	D'MAND Activation Button	1	-	\$9.30

The D'MAND Motion Sensor is used in low-traffic areas within the home such as a guest bathroom. Three-wire, low-voltage thermostat wire connects the motion sensor to the control on the D'MAND pump.

## D'MAND Motion Sensor



Part No.	Part Description	Each Qty.	Pkg. Qty.	List Price/Ea.
Q6700102	D'MAND Motion Sensor, hard-wired	1	-	\$121.15

# Uponor Plumbing Systems

## ProPEX Accessories

### ProPEX Water Heater Adapter



ProPEX Water Heater Adapter (stainless steel) connects 3/4" PEX to water heater.

**Note:** ProPEX Tool is required. ProPEX Rings sold separately.


Part No.	Part Description	Each Qty.	Pkg. Qty.	List Price/Ea.
Q2957575	ProPEX Water Heater Adapter, 3/4" PEX x 3/4" FIP x 18"	-	20	\$19.80

### ProPEX Washing Machine Outlet Box



ProPEX Washing Machine Outlet Box comes with two 1/2" ProPEX hot and cold color-coded valves. The versatility of the box allows the installer the freedom to mount the box with the valves either on the top or bottom. The four support brackets make mounting the box quick and easy. The included snap-on cover plate accommodates up to 1-inch drywall.

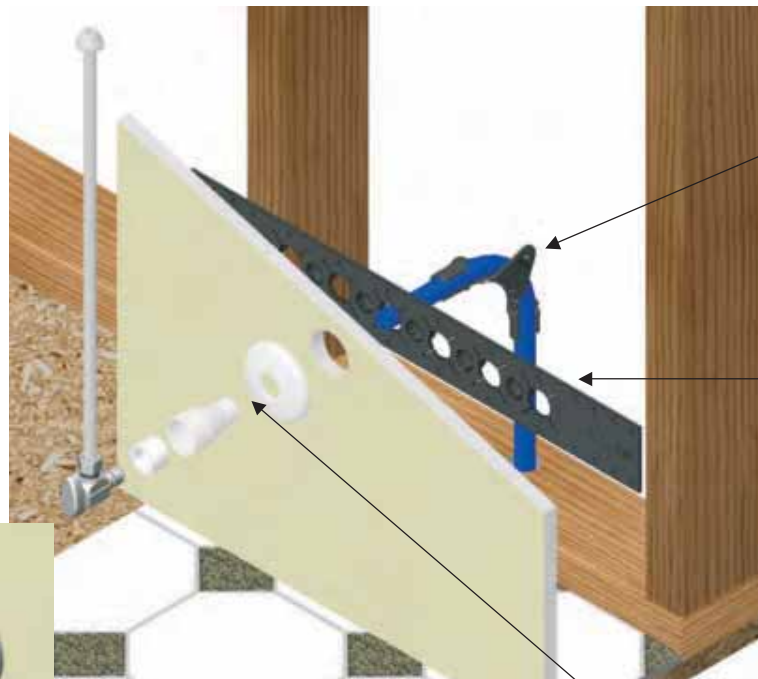
**Note:** ProPEX Tool is required. ProPEX Rings sold separately.

Part No.	Part Description	Each Qty.	Pkg. Qty.	List Price/Ea.
 Q5930500	ProPEX Washing Machine Outlet Box, 1/2" ProPEX Valves	-	12	\$49.95

## ProPEX Out-of-the-Wall Support System

The logical way to exit the wall with PEX

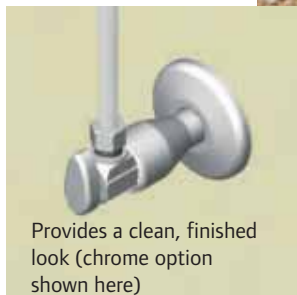
A complete, easily installed system that makes exiting the wall with ProPEX easier than ever. The plastic bend support snaps into the mating wall support bracket providing rigid support from any angle. The escutcheon allows a ProPEX connection to be made inside the sleeve and fully concealed.



Modified 1/2" Plastic Bend Support that easily snaps into the wall support bracket from any angle (A5250500)

PEX Wall Support Bracket provides a secure support for 1/2" or 3/4" PEX (A5750500)

Plastic Escutcheon w/mating sleeve used to conceal the ProPEX connection (Available in attractive white - F5670500 or chrome plated - F5650500 options)



Provides a clean, finished look (chrome option shown here)

# Uponor Plumbing Systems

ProPEX Ice Maker Box with Support Brackets comes with one 1/2" ProPEX valve. The valve has a 1/4" O.D. compression connection for connecting to standard ice maker tubing. The two support brackets make mounting the box quick and easy.

**Note:** The cover plate for this ice maker box is sold separately. ProPEX Tool is required. ProPEX Rings sold separately.

## ProPEX Ice Maker Box with Support Brackets



Part No.	Part Description	Each Qty.	Pkg. Qty.	List Price/Ea.
<b>NEW</b> Q5955025	ProPEX Ice Maker Box with Support Brackets, 1/2" ProPEX Valve	-	6	\$29.50

ProPEX In-line Ice Maker Tee, 1/2" PEX x 1/2" PEX; valve features 1/8" NPT x 1/4" O.D. compression.

**Note:** ProPEX tool is required. ProPEX Rings sold separately.

## ProPEX In-line Ice Maker Tee



Part No.	Part Description	Each Qty.	Pkg. Qty.	List Price/Ea.
Q4455050	ProPEX In-line Ice Maker Tee, 1/2" PEX x 1/2" PEX x 1/4" O.D. compression	-	10	\$37.55

ProPEX Escutcheon with flared sleeve provides an attractive cover for 1/2" Wirsbo AQUAPEX tubing and ProPEX connections as they exit the wall. Available in white or chrome-plated.

## ProPEX Escutcheon



Part No.	Part Description	Pkg. Qty.	Case Qty.	List Price/Ea.
<b>NEW</b> F5650500	ProPEX Escutcheon for 1/2" PEX (1 1/16" O.D.), chrome-plated	25	100	\$9.40
<b>NEW</b> F5670500	ProPEX Escutcheon for 1/2" PEX (1 1/16" O.D.), white	25	100	\$2.60

Chrome Finishing Sleeve slides over 1/2" Wirsbo AQUAPEX tubing connected to point-of-use valve to provide protection and improve appearance.

## Chrome Finishing Sleeve



Part No.	Part Description	Pkg. Qty.	Case Qty.	List Price/Ea.
F5600500	Chrome Finishing Sleeve for 1/2" PEX (1 1/16" O.D.)	25	100	\$4.30

# Uponor Plumbing Systems

## ProPEX Tools and Accessories

### ProPEX 200 Battery Expander Tool Kit and Accessories



The ProPEX 200 Battery Expander Tool is an electro-hydraulic tool with microprocessor-based intelligence that makes fast, easy connections to 3/8" through 2" Wirsbo AQUAPEX tubing. The tool kit includes a 1 1/2" pistol for making connections to 3/8" through 1 1/2" tubing, a 2" pistol with a 2" H-series Expander Head for making connections to 2" tubing.

The tool uses both H-series ProPEX Expander Heads as well as the regular ProPEX Expander Heads.

**Note:** ProPEX Expander Heads for 3/8" through 1 1/2" tubing sold separately.

Part No.	Part Description	Each Qty.	Pkg. Qty.	List Price/Ea.
Q6262000	ProPEX 200 Battery Expander Tool Kit (Includes 2" Pistol, 1 1/2" Pistol, 2" H-series Expander Head, 10-foot Hydraulic Hose, Hydraulic Pump, battery charger, two batteries, expander head lubricant, operation manual and roller case)	1	-	\$10,000.00
Q6260200	ProPEX 200 Battery, replacement part	1	-	\$526.75
Q6260700	ProPEX 200 Battery Charger, replacement part	1	-	\$450.00
Q6260002	ProPEX 200 Roller Case, replacement part	1	-	\$670.00

### ProPEX 150 Battery Expander Tool Kit and Accessories



The electro-mechanical, ProPEX 150 Battery Expander Tool expands 3/8", 1/2", 5/8", 3/4", 1", 1 1/4" and 1 1/2" Wirsbo AQUAPEX tubing using the ProPEX connection method. This ProPEX Battery Expander Tool uses the H-series ProPEX Expander Heads up to 1 1/2" as well as the standard ProPEX Expander Heads. The standard kit includes the Battery Expander Tool, two batteries, one battery charger, lubricant for expander heads and a heavy-duty carrying case. The Deluxe kit includes all the components of the standard kit plus the ProPEX Auto-Rotation Adapter, 1/2", 3/4" and 1" regular ProPEX Expander Heads.

**Note:** ProPEX Expander Heads sold separately.

Part No.	Part Description	Each Qty.	Pkg. Qty.	List Price/Ea.
Q6261500	ProPEX 150 Battery Expander Tool Kit	1	-	\$1,648.25
<b>NEW</b> Q6261550	ProPEX 150 Deluxe Battery Expander Tool Kit	1	-	\$2,295.00
Q6260100	ProPEX 150 Battery, replacement part	1	-	\$235.90
Q6260600	ProPEX 150 Battery Charger, replacement part	1	-	\$146.50

### ProPEX Auto Rotation Adapter



Designed to use with all standard expander tools and standard expander heads (3/8" to 1"), the ProPEX Auto Rotation Adapter eliminates the need to rotate the tubing when making ProPEX connections.

**Note:** The ProPEX Auto Rotation Adapter is not compatible with the ProPEX 200 Battery Expander Tool or H-series Expander Heads.

Part No.	Part Description	Each Qty.	Pkg. Qty.	List Price/Ea.
<b>NEW</b> Q6323810	ProPEX Auto Rotation Adapter	1	-	\$328.00

# Uponor Plumbing Systems

ProPEX Air (pneumatic) Expander Tool expands  $\frac{3}{8}$ ",  $\frac{1}{2}$ ",  $\frac{3}{4}$ " and 1" Wirsbo AQUAPEX tubing using the ProPEX connection method. Kit includes  $\frac{1}{2}$ " head, lubricant, carrying case and 4 oz. bottle of pneumatic oil.

**Note:**  $\frac{3}{8}$ ",  $\frac{3}{4}$ " and 1" Expander Heads sold separately.

Part No.	Part Description	Each Qty.	Pkg. Qty.	List Price/Ea.
Q6301000	ProPEX Air Expander Tool Kit	1	-	\$1,223.35
Q6301010	ProPEX Air Expander Oil, 4 oz. bottle, replacement part	1	-	\$3.30

## ProPEX Air Expander Tool Kit



The ProPEX Hand (Manual) Expander Tool Kit includes  $\frac{1}{2}$ ",  $\frac{3}{4}$ " and 1" heads, tool lubricant and a sturdy carrying case.

**Note:** The  $\frac{3}{8}$ " Expander Head is sold separately.

Part No.	Part Description	Each Qty.	Pkg. Qty.	List Price/Ea.
Q6295075	ProPEX Hand Expander Tool Kit	1	-	\$643.85

## ProPEX Hand Expander Tool Kit



The ProPEX Hand (Manual) Expander Tool features rugged, tool-hardened heads and an ergonomic handle design for use on  $\frac{3}{8}$ " to 1" ProPEX connections.

Part No.	Part Description	Each Qty.	Pkg. Qty.	List Price/Ea.
Q6275075	ProPEX Hand Expander Tool (only with case)	1	-	\$276.85

## ProPEX Hand Expander Tool



# Uponor Plumbing Systems

## ProPEX Expander Head



Standard ProPEX Expander Heads are used on all ProPEX Expander Tools.

**Note:** The ProPEX Expander Heads are not compatible with the APR Blunt Expander Tool.

Part No.	Part Description	Each Qty.	Pkg. Qty.	List Price/Ea.
Q6310375	3/8" ProPEX Expander Head	1	-	\$141.70
Q6310500	1/2" ProPEX Expander Head	1	-	\$128.80
Q6310750	3/4" ProPEX Expander Head	1	-	\$128.80
Q6311000	1" ProPEX Expander Head	1	-	\$128.80

## H-series ProPEX Expander Head



The H-series ProPEX Expander Heads are used only with the ProPEX 150 Battery Expander Tool (Q6261500) and ProPEX 200 Battery Expander Tool (Q6262000).

H-series ProPEX expander heads require less number of expansions than the regular ProPEX expander heads. Heads are identified with an "H" stamp on head.

**Note:** The H-series ProPEX Expander Heads are not compatible with the ProPEX Hand Expander, ProPEX Air Expander, APR Blunt Expander Tools or the Auto Rotation Adapter.

Part No.	Part Description	Each Qty.	Pkg. Qty.	List Price/Ea.
Q6380750	3/4" H-series ProPEX Expander Head	1	-	\$154.55
Q6381000	1" H-series ProPEX Expander Head	1	-	\$154.55
Q6381250	1 1/4" H-series ProPEX Expander Head	1	-	\$161.00
Q6381500	1 1/2" H-series ProPEX Expander Head	1	-	\$167.40
Q6282000	2" H-series ProPEX Expander Head	1	-	\$542.85

## Graphite Grease



Graphite Grease lubricates ProPEX Expander Tool cones.

Part No.	Part Description	Each Qty.	Pkg. Qty.	List Price/Ea.
Q5590028	Graphite Grease for ProPEX Tools, spare part	1	-	\$40.20

## Tubing Supports

Plastic Bend Support (glass-reinforced nylon) provides rigid 90-degree bend and sleeve for 3/8", 1/2" and 3/4" Wirsbo AQUAPEX tubing.

### Plastic Bend Support

**Note:** A5250500 also works in conjunction with A5750500 – PEX Wall Support Bracket on page 151.

Part No.	Part Description	Each Qty.	Pkg. Qty.	List Price/Ea.
A5150375	3/8" Plastic Bend Support	-	25	\$1.35
<b>NEW</b> A5250500	1/2" Plastic Bend Support	-	25	\$1.40
A5150750	3/4" Plastic Bend Support	-	50	\$2.85



Metal Bend Support (zinc-plated) provides rigid 90-degree bend for 3/8", 1/2" and 3/4" Wirsbo AQUAPEX tubing.

### Metal Bend Support

Part No.	Part Description	Each Qty.	Pkg. Qty.	List Price/Ea.
A5110375	3/8" Metal Bend Support	-	50	\$2.95
A5110500	1/2" Metal Bend Support	-	50	\$2.85
A5110750	3/4" Metal Bend Support	-	25	\$5.30



PVC Bend Support provides rigid 90-degree bend and sleeve for 3/8", 1/2", 3/4" and 1" Wirsbo AQUAPEX tubing runs exiting a concrete slab.

### PVC Bend Support

Part No.	Part Description	Each Qty.	Pkg. Qty.	List Price/Ea.
A5500500	3/4" PVC Elbow for 3/8" and 1/2" PEX Bend Support	-	25	\$1.95
A5500750	1 1/4" PVC Elbow for 3/4" PEX Bend Support	-	20	\$5.75
A5501000	1 1/2" PVC Elbow for 1" PEX Bend Support	-	25	\$6.35



# Uponor Plumbing Systems

## Plastic Drop Ear Bend Support



Plastic Drop Ear Bend Support (glass-reinforced nylon) provides rigid 90-degree bend and connection-free stub out from a stud wall or floor for 3/8" or 1/2" Wirsbo AQUAPEX tubing.

Part No.	Part Description	Pkg. Qty.	Case Qty.	List Price/Ea.
F5200375	3/8" Plastic Drop Ear Bend Support	25	250	\$2.60
F5200500	1/2" Plastic Drop Ear Bend Support	25	250	\$2.60

## Metal Drop Ear Bend Support



Metal Drop Ear Bend Support (zinc-plated) provides rigid 90-degree bend and connection-free stub out from a stud wall or floor for 3/8" or 1/2" Wirsbo AQUAPEX tubing.

Part No.	Part Description	Each Qty.	Pkg. Qty.	List Price/Ea.
F5120375	3/8" Metal Drop Ear Bend Support	-	25	\$6.55
F5120500	1/2" Metal Drop Ear Bend Support	-	25	\$6.85

## Straight-through Support



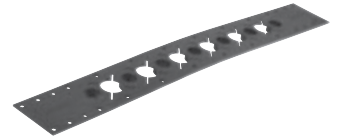
Straight-through Support (zinc-plated) provides rigid straight-through support for 1/2" Wirsbo AQUAPEX tubing as it exits a floor.

Part No.	Part Description	Each Qty.	Pkg. Qty.	List Price/Ea.
F5140500	1/2" Metal Straight-through Support	-	25	\$9.10

# Uponor Plumbing Systems

Plastic Wall Support bracket provides rigid straight-through support for 1/2" or 3/4" Wirsbo AQUAPEX tubing, fixed 2" on-center spacing, and allows the 1/2" plastic bend support (A5250500 on page 149) to snap into place for 1/2" Wirsbo AQUAPEX tubing as it exits a wall.

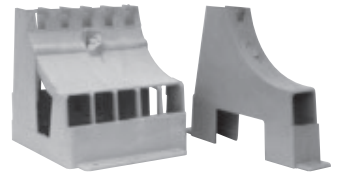
## PEX Wall Support Bracket



Part No.	Part Description	Each Qty.	Pkg. Qty.	List Price/Ea.
<b>NEW</b> A5750500	PEX Wall Support Bracket, 1/2" and 3/4"	-	25	\$5.15

PEX Stand-up Bracket is used in residential slab or commercial multi-floor construction. Secure the brackets to the deck form. Then install the 1/2" PEX tubing in the brackets, either with the 1/2" PEX tubing alone or with the 1/2" PEX tubing sleeved inside corrugated polyethylene carrier tube. The brackets are available in either single- or five-tube configurations.

## PEX Stand-up Bracket



Part No.	Part Description	Each Qty.	Pkg. Qty.	List Price/Ea.
F5801000	Single-tube PEX Stand-up Bracket for 1/2" PEX	-	25	\$7.80
F5805000	Five-tube PEX Stand-up Bracket for 1/2" PEX	-	25	\$17.95

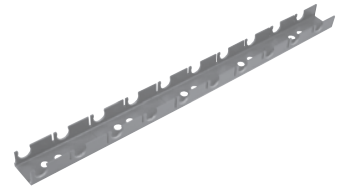
## Tube Fasteners and Protectors

Plastic PEX Rail secures Wirsbo AQUAPEX tubing products to metal and wood-support structures.

## PEX Rail

**Note:** Suitable fastening hardware is required (not included).

Part No.	Part Description	Each Qty.	Pkg. Qty.	List Price/Ea.
A5700500	1/2" PEX Rail, 6.5 ft.	1	16	\$8.90
A5700750	3/4" PEX Rail, 6.5 ft.	1	16	\$15.75



The PEX Clip provides excellent holding power and can attach together laterally for tight installations.

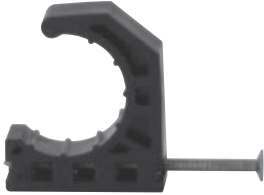
## PEX Clip

Part No.	Part Description	Each Qty.	Pkg. Qty.	List Price/Ea.
F7060375	3/8" PEX Clip, 100/box	1	-	\$77.85
F7051258	1/2" PEX Clip, 100/box	1	-	\$77.85



# Uponor Plumbing Systems

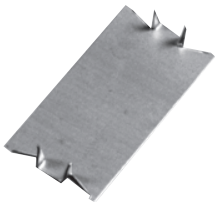
## Tube Talon



Tube Talon secures 3/8", 1/2", 5/8", 3/4" and 1" Wirsbo AQUAPEX tubing products. Fasteners are included.

Part No.	Part Description	Each Qty.	Case Qty.	List Price/Ea.
F7050375	Tube Talon (3/8" PEX), 100/bag	1	10	\$23.65
F7050750	Tube Talon (1/2", 5/8", 3/4" PEX), 100/bag	1	10	\$20.65
F7051000	Tube Talon (1" PEX), 50/bag	1	10	\$25.60

## Steel Plate Protector



Steel Plate Protector protects tubing from possible damage by drywall, trim screws or nails, etc.

Part No.	Part Description	Each Qty.	Pkg. Qty.	List Price/Ea.
F5700002	Steel Plate Protector, 100/box	1	-	\$28.10

## Tube Handling

### Select Uncoiler

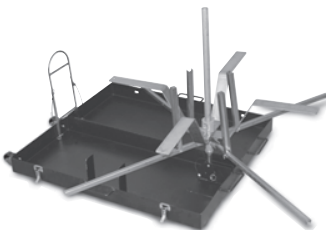


The Select Uncoiler facilitates the uncoiling of 5/16" to 1" Wirsbo AQUAPEX or up to 5/8" multi-layer composite (MLC) tubing, which simplifies installation and reduces labor. The robust construction features an adjustable reel to allow for either horizontal or vertical position uncoiling. The durable wheels make for easy portability, and the uncoiler is equipped with a tubing-feed eyelet.

**Note:** Due to large coil inside diameters, the Select Uncoiler cannot support 1,000-foot coils of 5/8" and larger MLC tubing.

Part No.	Part Description	Each Qty.	Pkg. Qty.	List Price/Ea.
E6062000	Select Uncoiler	1	-	\$1,585.20

### Compact Select Uncoiler



The Compact Select Uncoiler facilitates the uncoiling of 5/16" to 1" Wirsbo AQUAPEX or MLC tubing. The entire 65-pound unit conveniently collapses into its own heavy-duty, compact carrying case, allowing for quick and efficient transport of the uncoiler as well as easy storage when not in use.

Part No.	Part Description	Each Qty.	Pkg. Qty.	List Price/Ea.
E6063000	Compact Select Uncoiler	1	-	\$1,014.95

# Uponor Plumbing Systems

The Tube Uncoiler facilitates the uncoiling of 5/16" to 1" Wirsbo AQUAPEX tubing, which simplifies installation and reduces labor. Weighted arms hold tubing in place while uncoiling. Eyelet keeps tubing from tangling. Base is collapsible. No additional hardware necessary for attaching arms. Easy to assemble.

**Note:** Upon assembly, install the guide pin on the swivel arm in order to keep the arm in place.

## Tube Uncoiler



Part No.	Part Description	Each Qty.	Pkg. Qty.	List Price/Ea.
E6061000	Tube Uncoiler	1	-	\$451.10

Metal Tube Cutter cuts up to 1" PEX tubing. Plastic Tube Cutter cuts up to 1" PEX or 3/4" MLC tubing.

## Tube Cutter



Part No.	Part Description	Each Qty.	Pkg. Qty.	List Price/Ea.
E6081125	Tube Cutter (metal) for up to 1" PEX	1	-	\$35.50
E6081140	Tube Cutter Replacement Blade for E6081125, spare part	1	-	\$12.95
E6081128	Tube Cutter (plastic) for up to 1" PEX (3/4" MLC Tubing)	1	-	\$28.50
E6081143	Tube Cutter Replacement Blade for E6081128, spare part	1	-	\$20.65

Ratchet-style Tube Cutter cuts up to 2" PEX and 1" MLC. Ratchet-style Large Dimensional Tube Cutter cuts 1" to 2" PEX and 1" MLC.

## Ratchet-style Tube Cutter



Part No.	Part Description	Each Qty.	Pkg. Qty.	List Price/Ea.
E6081500	Ratchet-style Tube Cutter for up to 1" PEX and MLC Tubing	1	-	\$35.40
E6081544	Tube Cutter Replacement Blade for E6081500, replacement part	1	-	\$16.10
E6082000	Ratchet-style Large Dimension Tube Cutter for 1" to 2" PEX and 1" MLC Tubing	1	-	\$254.40

# Uponor Plumbing Systems

## APR Copper Manifolds

### APR 1" (type L) Copper Branch Manifold



APR 1" Copper Branch Manifold features 1/2" APR outlets. By cutting the spun end of the manifold off, sections can sweat together to extend the number of outlets. Do not exceed acceptable flow rates for 1-inch nominal copper. Each manifold end requires a 1-inch transition fitting to complete the manifold assembly.

**Note:** APR Ratchet Tool and APR Blunt Expander Tool are required. APR Brass Sleeves sold separately.

Part No.	Part Description	Each Qty.	Pkg. Qty.	List Price/Ea.
◀ K2801050	APR 1" Copper Branch Manifold with 1/2" APR outlets, 4 outlets	1	-	\$53.65
◀ K2811050	APR 1" Copper Branch Manifold with 1/2" APR outlets, 6 outlets	1	-	\$69.65
◀ K2821050	APR 1" Copper Branch Manifold with 1/2" APR outlets, 8 outlets	1	-	\$85.65
◀ K2831050	APR 1" Copper Branch Manifold with 1/2" APR outlets, 10 outlets	1	-	\$102.95
◀ K2841050	APR 1" Copper Branch Manifold with 1/2" APR outlets, 12 outlets	1	-	\$125.40

### APR 1" (type L) Copper Flow-through Manifold



APR 1" Copper Flow-through Manifold features 1/2" APR outlets brazed to the manifold body. Two 3/4" APR adapter fittings are brazed to the manifold ends for quick connection to 3/4" Wirsbo AQUAPEX tubing.

**Note:** APR Ratchet Tool and APR Blunt Expander Tool are required. APR Brass Sleeves sold separately.

Part No.	Part Description	Each Qty.	Pkg. Qty.	List Price/Ea.
◀ K2927557	APR 1" Copper Flow-through Manifold, 2 outlets, 3/4" x 3/4" APR	1	-	\$42.10
◀ K2907557	APR 1" Copper Flow-through Manifold, 3 outlets, 3/4" x 3/4" APR	1	-	\$51.85
◀ K2807557	APR 1" Copper Flow-through Manifold, 4 outlets, 3/4" x 3/4" APR	1	-	\$57.85
◀ K2957557	APR 1" Copper Flow-through Manifold, 5 outlets, 3/4" x 3/4" APR	1	-	\$72.30
◀ K2817557	APR 1" Copper Flow-through Manifold, 6 outlets, 3/4" x 3/4" APR	1	-	\$80.25
◀ K2827557	APR 1" Copper Flow-through Manifold, 8 outlets, 3/4" x 3/4" APR	1	-	\$89.30

◀ Discontinued item; available while quantities last. Please contact Uponor Customer Service for availability. All sales are final.

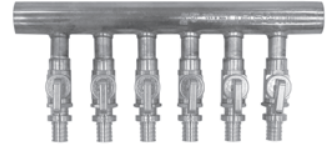
# Uponor Plumbing Systems

APR 1" Copper Valved Manifold features ½" APR valved outlets allowing for simple and easy isolation of individual outlets. Sections can sweat together to extend the number of outlets using a standard 1-inch copper coupling. Do not exceed acceptable flow rates for 1-inch nominal copper. Each manifold end requires an end cap or transition fitting to complete the manifold assembly.

**Note:** APR Ratchet Tool and APR Blunt Expander Tool are required. APR Brass Sleeves sold separately.

Part No.	Part Description	Each Qty.	Pkg. Qty.	List Price/Ea.
◀ K2500400	APR 1" Copper Valved Manifold with ½" APR Ball Valves, 4 outlets	1	-	\$106.40
◀ K2500600	APR 1" Copper Valved Manifold with ½" APR Ball Valves, 6 outlets	1	-	\$149.75
◀ K2500800	APR 1" Copper Valved Manifold with ½" APR Ball Valves, 8 outlets	1	-	\$201.50
◀ K2501000	APR 1" Copper Valved Manifold with ½" APR Ball Valves, 10 outlets	1	-	\$259.45
◀ K2501200	APR 1" Copper Valved Manifold with ½" APR Ball Valves, 12 outlets	1	-	\$302.75

## APR 1" (type L) Copper Valved Manifold



The APR 1" Copper Manifold is 6 feet in length and features APR outlets for connecting PEX tubing. The manifold features 24 outlets, which are ½" in diameter and spaced three inches on center. The manifold is suitable for cutting to any length necessary to achieve the desired number of outlets.

**Note:** APR Ratchet Tool and APR Blunt Expander Tool are required. APR Brass Sleeves sold separately.

Part No.	Part Description	Each Qty.	Pkg. Qty.	List Price/Ea.
◀ K2512450	APR 1" x 6' Copper Manifold with ½" APR Outlets, 24 outlets	1	-	\$223.95

## APR 1" (type L) Copper Manifold

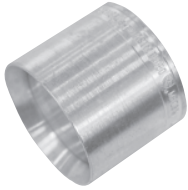


◀ Discontinued item; available while quantities last. Please contact Uponor Customer Service for availability. All sales are final.

# Uponor Plumbing Systems

## APR Fittings

### APR Brass Sleeve



APR Brass Sleeve slides over the end of the expanded Wirsbo AQUAPEX tubing and APR fitting to form the completed fitting. The APR Ratchet Tool is used to slide the sleeve over the tubing and fitting.

Part No.	Part Description	Pkg. Qty.	Case Qty.	List Price/Ea.
◀ K4680500	APR Brass Sleeve, 1/2"	50	250	\$0.80
◀ K4680750	APR Brass Sleeve, 3/4"	50	250	\$1.30
◀ K4681000	APR Brass Sleeve, 1"	10	100	\$2.15
◀ K4681250	APR DZR Brass Sleeve, 1 1/4"	10	100	\$5.65

### APR Brass Coupling

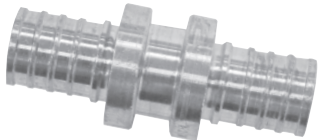


APR Brass Couplings make PEX-to-PEX connections for Wirsbo AQUAPEX tubing.

**Note:** APR Ratchet Tool and APR Blunt Expander Tool are required. APR Brass Sleeves sold separately.

Part No.	Part Description	Pkg. Qty.	Case Qty.	List Price/Ea.
◀ K4545050	APR Brass Coupling, 1/2" PEX x 1/2" PEX	25	100	\$2.70
◀ K4545075	APR Brass Coupling, 1/2" PEX x 3/4" PEX	25	100	\$8.15
◀ K4547575	APR Brass Coupling, 3/4" PEX x 3/4" PEX	25	100	\$5.55
◀ K4547510	APR Brass Coupling, 3/4" PEX x 1" PEX	10	100	\$9.40
◀ K4541010	APR Brass Coupling, 1" PEX x 1" PEX	10	100	\$10.25

### APR DZR Brass Coupling



APR DZR Brass Coupling makes a PEX-to-PEX connection for Wirsbo AQUAPEX tubing. DZR Brass Fittings are safe for direct burial in soil.

**Note:** APR Ratchet Tool and APR Blunt Expander Tool are required. APR Brass Sleeves sold separately.

Part No.	Part Description	Each Qty.	Pkg. Qty.	List Price/Ea.
◀ K4541313	APR DZR Brass Coupling, 1 1/4" PEX x 1 1/4" PEX	-	10	\$22.70

◀ Discontinued item; available while quantities last. Please contact Uponor Customer Service for availability. All sales are final.

# Uponor Plumbing Systems

APR Brass Elbows make 90-degree PEX-to-PEX connections for Wirsbo AQUAPEX tubing.

**Note:** APR Ratchet Tool and APR Blunt Expander Tool are required. APR Brass Sleeves sold separately.

Part No.	Part Description	Pkg. Qty.	Case Qty.	List Price/Ea.
◀ K4710500	APR Brass Elbow, 1/2" PEX x 1/2" PEX	25	100	\$4.45
◀ K4710750	APR Brass Elbow, 3/4" PEX x 3/4" PEX	25	100	\$6.70
◀ K4711000	APR Brass Elbow, 1" PEX x 1" PEX	10	100	\$11.00

## APR Brass Elbow



The APR Drop Ear Brass Elbow provides rigid 90-degree connection and the ability to secure Wirsbo AQUAPEX tubing.

**Note:** APR Ratchet Tool and APR Blunt Expander Tool are required. APR Brass Sleeves sold separately.

Part No.	Part Description	Pkg. Qty.	Case Qty.	List Price/Ea.
◀ K4235050	APR Drop Ear Brass Elbow, 1/2" PEX x 1/2" FIP	25	100	\$8.40

## APR Drop Ear Brass Elbow

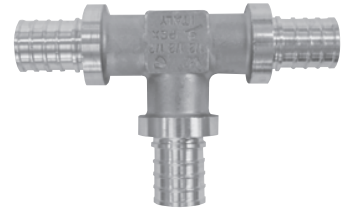


APR Brass Tee makes diverting connections for Wirsbo AQUAPEX tubing in supply and return mains. Branch size is listed last in the part description.

**Note:** APR Ratchet Tool and APR Blunt Expander Tool required. APR Brass Sleeves sold separately.

Part No.	Part Description	Pkg. Qty.	Case Qty.	List Price/Ea.
◀ K4705050	APR Brass Tee, 1/2" PEX x 1/2" PEX x 1/2" PEX	25	100	\$5.00
◀ K4707575	APR Brass Tee, 3/4" PEX x 3/4" PEX x 3/4" PEX	25	100	\$8.45
◀ K4701010	APR Brass Tee, 1" PEX x 1" PEX x 1" PEX	10	100	\$15.20

## APR Brass Tee



Branch size is listed last in the part description.

**Note:** APR Ratchet Tool and APR Blunt Expander Tool are required. APR Brass Sleeves sold separately.

Part No.	Part Description	Pkg. Qty.	Case Qty.	List Price/Ea.
◀ K4705575	APR Brass Reducing Tee, 1/2" PEX x 1/2" PEX x 3/4" PEX	25	100	\$7.95
◀ K4707555	APR Brass Reducing Tee, 3/4" PEX x 1/2" PEX x 1/2" PEX	25	100	\$8.20
◀ K4707557	APR Brass Reducing Tee, 3/4" PEX x 1/2" PEX x 3/4" PEX	25	100	\$8.15
◀ K4707550	APR Brass Reducing Tee, 3/4" PEX x 3/4" PEX x 1/2" PEX	25	100	\$8.35
◀ K4707710	APR Brass Reducing Tee, 3/4" PEX x 3/4" PEX x 1" PEX	10	100	\$13.95
◀ K4701775	APR Brass Reducing Tee, 1" PEX x 3/4" PEX x 3/4" PEX	10	100	\$13.95
◀ K4701751	APR Brass Reducing Tee, 1" PEX x 3/4" PEX x 1" PEX	10	100	\$13.95
◀ K4701150	APR Brass Reducing Tee, 1" PEX x 1" PEX x 1/2" PEX	10	100	\$13.90
◀ K4701175	APR Brass Reducing Tee, 1" PEX x 1" PEX x 3/4" PEX	10	100	\$13.90

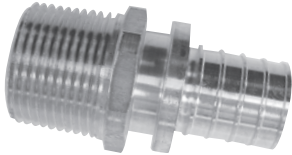
## APR Brass Reducing Tee



◀ Discontinued item; available while quantities last. Please contact Uponor Customer Service for availability. All sales are final.

# Uponor Plumbing Systems

## APR Brass Male Threaded Adapter

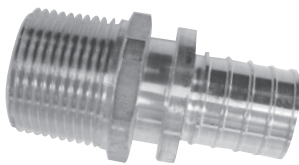


APR Brass Male Threaded Adapter transitions Wirsbo AQUAPEX tubing to male NPT threads.

**Note:** APR Ratchet Tool and APR Blunt Expander Tool are required. APR Brass Sleeves sold separately.

Part No.	Part Description	Pkg. Qty.	Case Qty.	List Price/Ea.
◀ K4525050	APR Brass Male Threaded Adapter, 1/2" PEX x 1/2" NPT	25	100	\$3.55
◀ K4525075	APR Brass Male Threaded Adapter, 1/2" PEX x 3/4" NPT	25	100	\$5.80
◀ K4527575	APR Brass Male Threaded Adapter, 3/4" PEX x 3/4" NPT	25	100	\$6.65
◀ K4527510	APR Brass Male Threaded Adapter, 3/4" PEX x 1" NPT	10	100	\$8.40
◀ K4521010	APR Brass Male Threaded Adapter, 1" PEX x 1" NPT	10	100	\$9.30

## APR DZR Brass Male Threaded Adapter

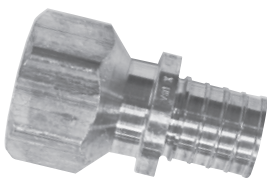


APR DZR Brass Male Threaded Adapter transitions Wirsbo AQUAPEX tubing to male NPT threads. DZR Brass Fittings are safe for direct burial in soil.

**Note:** APR Ratchet Tool and APR Blunt Expander Tool are required. APR Brass Sleeves sold separately.

Part No.	Part Description	Each Qty.	Pkg. Qty.	List Price/Ea.
◀ K4521313	APR DZR Brass Male Threaded Adapter, 1 1/4" PEX x 1 1/4" NPT	-	10	\$20.95

## APR Brass Female Threaded Adapter



APR Brass Female Threaded Adapter transitions Wirsbo AQUAPEX tubing to female NPT threads.

**Note:** APR Ratchet Tool and APR Blunt Expander Tool required. APR Brass Sleeves sold separately.

Part No.	Part Description	Pkg. Qty.	Case Qty.	List Price/Ea.
◀ K4575050	APR Brass Female Threaded Adapter, 1/2" PEX x 1/2" NPT	25	100	\$5.80
◀ K4575075	APR Brass Female Threaded Adapter, 1/2" PEX x 3/4" NPT	25	100	\$6.50
◀ K4577575	APR Brass Female Threaded Adapter, 3/4" PEX x 3/4" NPT	25	100	\$6.95
◀ K4577510	APR Brass Female Threaded Adapter, 3/4" PEX x 1" NPT	10	100	\$15.25
◀ K4571010	APR Brass Female Threaded Adapter, 1" PEX x 1" NPT	10	100	\$13.95

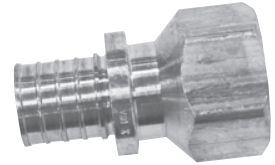
◀ Discontinued item; available while quantities last. Please contact Uponor Customer Service for availability. All sales are final.

# Uponor Plumbing Systems

APR DZR Brass Female Threaded Adapter transitions Wirsbo AQUAPEX tubing to female NPT thread. DZR Brass Fittings are safe for direct burial in soil.

**Note:** APR Ratchet Tool and APR Blunt Expander Tool required. APR Brass Sleeves sold separately.

## APR DZR Brass Female Threaded Adapter

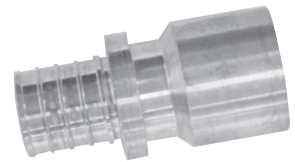


Part No.	Part Description	Each Qty.	Pkg. Qty.	List Price/Ea.
◀ K4571313	APR DZR Brass Female Threaded Adapter, 1 1/4" PEX x 1 1/4" NPT	-	10	\$34.30

APR Brass Sweat Adapter transitions Wirsbo AQUAPEX tubing to copper pipe.

**Note:** APR Ratchet Tool and APR Blunt Expander Tool are required. APR Brass Sleeves sold separately.

## APR Brass Sweat Adapter

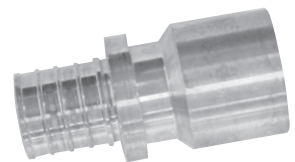


Part No.	Part Description	Pkg. Qty.	Case Qty.	List Price/Ea.
◀ K4515050	APR Brass Sweat Adapter, 1/2" PEX x 1/2" Copper	25	100	\$2.40
◀ K4515075	APR Brass Sweat Adapter, 1/2" PEX x 3/4" Copper	25	100	\$4.00
◀ K4517550	APR Brass Sweat Adapter, 3/4" PEX x 1/2" Copper	25	100	\$4.00
◀ K4517575	APR Brass Sweat Adapter, 3/4" PEX x 3/4" Copper	25	100	\$5.10
◀ K4517510	APR Brass Sweat Adapter, 3/4" PEX x 1" Copper	10	100	\$7.30
◀ K4511010	APR Brass Sweat Adapter, 1" PEX x 1" Copper	10	100	\$8.90

APR DZR Brass Sweat Adapter transitions Wirsbo AQUAPEX tubing to copper pipe. DZR Brass Fittings are safe for direct burial in soil.

**Note:** APR Ratchet Tool and APR Blunt Expander Tool are required. APR Brass Sleeves sold separately.

## APR DZR Brass Sweat Adapter

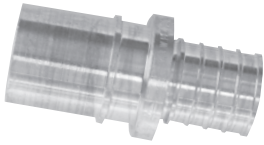


Part No.	Part Description	Each Qty.	Pkg. Qty.	List Price/Ea.
◀ K4511313	APR DZR Brass Sweat Adapter, 1 1/4" PEX x 1 1/4" Copper	-	10	\$16.80

◀ Discontinued item; available while quantities last. Please contact Uponor Customer Service for availability. All sales are final.

# Uponor Plumbing Systems

## APR Brass Fitting Adapter

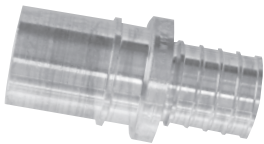


APR Brass Fitting Adapter transitions Wirsbo AQUAPEX tubing to copper fitting connections.

**Note:** APR Ratchet Tool and APR Blunt Expander Tool are required. APR Brass Sleeves sold separately.

Part No.	Part Description	Pkg. Qty.	Case Qty.	List Price/Ea.
◀ K4505050	APR Brass Fitting Adapter, 1/2" PEX x 1/2" Copper	25	100	\$2.30
◀ K4505075	APR Brass Fitting Adapter, 1/2" PEX x 3/4" Copper	25	100	\$4.60
◀ K4507550	APR Brass Fitting Adapter, 3/4" PEX x 1/2" Copper	25	100	\$4.75
◀ K4507575	APR Brass Fitting Adapter, 3/4" PEX x 3/4" Copper	25	100	\$5.00
◀ K4507510	APR Brass Fitting Adapter, 3/4" PEX x 1" Copper	10	100	\$5.50
◀ K4501010	APR Brass Fitting Adapter, 1" PEX x 1" Copper	10	100	\$8.60

## APR DZR Brass Fitting Adapter

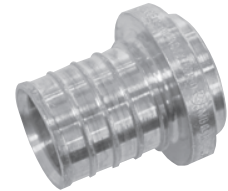


APR DZR Brass Fitting Adapter transitions Wirsbo AQUAPEX tubing to copper fitting connections. DZR Brass Fittings are safe for direct burial in soil.

**Note:** APR Ratchet Tool and APR Blunt Expander Tool are required. APR Brass Sleeves sold separately.

Part No.	Part Description	Each Qty.	Pkg. Qty.	List Price/Ea.
◀ K4501313	APR DZR Brass Fitting Adapter, 1 1/4" PEX x 1 1/4" Copper	-	10	\$16.35

## APR Brass Plug



APR Brass Plug temporary or permanently terminates the end of the Wirsbo AQUAPEX tubing.

**Note:** APR Ratchet Tool and APR Blunt Expander Tool are required. APR Brass Sleeves sold separately.

Part No.	Part Description	Pkg. Qty.	Case Qty.	List Price/Ea.
◀ K4535050	APR Brass Plug, 1/2"	25	250	\$1.85
◀ K4537575	APR Brass Plug, 3/4"	25	250	\$3.25
◀ K4531010	APR Brass Plug, 1"	10	250	\$8.40

## APR Copper Tub Ell



APR Copper Tub Ell provides a 90-degree transition from tub and shower valves to Wirsbo AQUAPEX tubing.

**Note:** APR Ratchet Tool and APR Blunt Expander Tool required. APR Brass Sleeves sold separately.

Part No.	Part Description	Pkg. Qty.	Case Qty.	List Price/Ea.
◀ K2885050	APR Copper Tub Ell, 1/2" PEX x 1/2" Copper (3" x 4")	25	100	\$9.60
◀ K2875050	APR Copper Tub Ell, 1/2" PEX x 1/2" Copper (3" x 6")	25	100	\$9.60

◀ Discontinued item; available while quantities last. Please contact Uponor Customer Service for availability. All sales are final.

# Uponor Plumbing Systems

APR Copper Stub Ell provides a 90-degree transition from Wirsbo AQUAPEX tubing to copper pipe.

**Note:** APR Ratchet Tool and APR Blunt Expander Tool are required. APR Brass Sleeves sold separately.

Part No.	Part Description	Pkg. Qty.	Case Qty.	List Price/Ea.
◀ K2865050	APR Copper Stub Ell, 1/2" PEX x 1/2" Copper (3 1/2" x 8")	25	100	\$10.40
◀ K2855050	APR Copper Stub Ell, 1/2" PEX x 1/2" Copper (13" x 8")	25	100	\$13.15
◀ K2895050	APR Copper Stub Ell, 1/2" PEX x 1/2" Copper (8" x 13")	25	100	\$13.50
◀ K2897575	APR Copper Stub Ell, 3/4" PEX x 3/4" Copper (4" x 8")	25	100	\$20.10

**APR Copper Stub Ell**



APR Copper Straight Stub provides a straight transition from Wirsbo AQUAPEX tubing to copper pipe.

**Note:** APR Ratchet Tool and APR Blunt Expander Tool are required. APR Brass Sleeves sold separately.

Part No.	Part Description	Pkg. Qty.	Case Qty.	List Price/Ea.
◀ K2935050	APR Copper Straight Stub, 1/2" PEX x 1/2" Copper (8")	25	100	\$10.15
◀ K2945050	APR Copper Straight Stub, 1/2" PEX x 1/2" Copper (15")	25	100	\$11.90

**APR Copper Straight Stub**



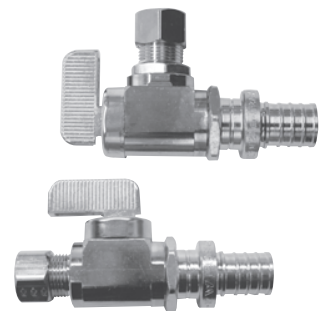
## Brass APR Stop and Ball Valves

APR Full-port Stop Valve is chrome-plated and available in straight or angle stop configurations. Stop valves are used for point-of-use shut-off at the fixture. Both valve styles connect 1/2" Wirsbo AQUAPEX tubing to 3/8" o.d. risers. Both styles feature a quarter-turn shut-off.

**Note:** Compression inserts and rings for the 3/8" riser connections are included with the valves. APR Ratchet Tool and APR Blunt Expander Tool are required. APR Brass Sleeves sold separately.

Part No.	Part Description	Pkg. Qty.	Case Qty.	List Price/Ea.
◀ K4895038	APR Full-port Angle Stop Valve for 1/2" PEX, 1/4-turn valve	10	100	\$12.40
◀ K4885038	APR Full-port Straight Stop Valve for 1/2" PEX, 1/4-turn valve	10	100	\$12.80

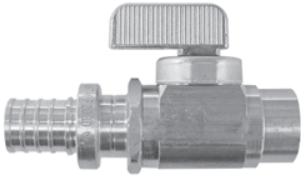
**Brass APR Full-port Stop Valve**



◀ Discontinued item; available while quantities last. Please contact Uponor Customer Service for availability. All sales are final.

# Uponor Plumbing Systems

## Brass APR to Copper Ball Valve

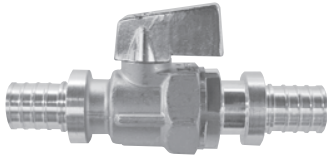


The APR to Copper Ball Valve features a quarter-turn shut-off valve for 1/2" Wirsbo AQUAPEX tubing with transition to 1/2" copper.

**Note:** APR Ratchet Tool and APR Blunt Expander Tool are required. APR Brass Sleeves sold separately.

Part No.	Part Description	Pkg. Qty.	Case Qty.	List Price/Ea.
◀ K4805050	APR Ball Valve (large bore), 1/2" PEX x 1/2" copper	10	100	\$15.45

## Brass APR to APR Ball Valve

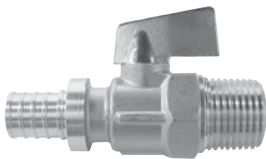


The APR Ball Valves feature a quarter-turn, in-line shut-off valve for 1/2" Wirsbo AQUAPEX tubing. The APR Angle Ball Valve features a quarter-turn, 90-degree shut-off valve.

**Note:** APR Ratchet Tool and APR Blunt Expander Tool are required. APR Brass Sleeves sold separately.

Part No.	Part Description	Pkg. Qty.	Case Qty.	List Price/Ea.
◀ K4815050	APR Ball Valve (large bore), 1/2" PEX x 1/2" PEX	10	100	\$16.00
◀ K4875050	APR Angle Ball Valve, 1/2" PEX x 1/2" PEX	10	100	\$14.05

## Brass APR to MIP Ball Valve



The APR to MIP Ball Valve features a quarter-turn shut-off valve for 1/2" Wirsbo AQUAPEX tubing to 1/2" male NPT.

**Note:** APR Ratchet Tool and APR Blunt Expander Tool are required. APR Brass Sleeves sold separately.

Part No.	Part Description	Pkg. Qty.	Case Qty.	List Price/Ea.
◀ K4795050	APR to MIP Ball Valve (large bore), 1/2" PEX x 1/2" MIP	10	100	\$12.85

◀ Discontinued item; available while quantities last. Please contact Uponor Customer Service for availability. All sales are final.

## APR Tools and Accessories

This Tool Kit contains the Heavy-duty APR Ratchet Tool, 1/2", 3/4" and 1" jaw sets and a durable carrying case. The Heavy-duty APR Ratchet Tool pulls the APR Brass Sleeve over Wirsbo AQUAPEX tubing and APR fitting to complete the connection. This is a required component of the APR fitting system for 1/2" through 1 1/4" Wirsbo AQUAPEX tubing.

**Note:** The 1 1/4" jaw set is sold separately.

Part No.	Part Description	Each Qty.	Pkg. Qty.	List Price/Ea.
◀ K6275010	Heavy-duty APR Ratchet Tool Kit	1	-	\$1,028.80
◀ K6270001	Heavy-duty APR Ratchet Tool only, includes case	1	-	\$610.05

### Heavy-duty APR Ratchet Tool Kit



This APR Ratchet Tool Kit contains the Ratchet Tool, 1/2" and 3/4" jaw sets and a durable carrying case. The APR Ratchet Tool pulls the APR Brass Sleeve over Wirsbo AQUAPEX tubing and APR fitting to complete the connection. This is a required component of the APR fitting system for 1/2" through 3/4" Wirsbo AQUAPEX tubing.

Part No.	Part Description	Each Qty.	Pkg. Qty.	List Price/Ea.
◀ K6270020	APR Ratchet Tool Kit	1	-	\$769.90
◀ K6270002	APR Ratchet Tool only, includes case	1	-	\$486.85

### APR Ratchet Tool Kit



APR Ratchet Tool Jaw Set is used with the Heavy-duty and regular APR Ratchet Tools. Each set consists of two jaws for the size selected.

**Note:** The 1" and 1 1/4" jaw sets are only compatible with the Heavy-duty APR Ratchet Tool.

Part No.	Part Description	Each Qty.	Pkg. Qty.	List Price/Ea.
◀ K6270500	APR Ratchet Tool Jaw Set (1/2")	1	-	\$147.90
◀ K6270750	APR Ratchet Tool Jaw Set (3/4")	1	-	\$160.20
◀ K6271000	Heavy-duty APR Ratchet Tool Jaw Set (1")	1	-	\$160.20
◀ K6271250	Heavy-duty APR Ratchet Tool Jaw Set (1 1/4")	1	-	\$172.55

### APR Ratchet Tool Jaw Set



◀ Discontinued item; available while quantities last. Please contact Uponor Customer Service for availability. All sales are final.

# Uponor Plumbing Systems

## APR Blunt Expander Tool



The APR Blunt Expander Tool Kit contains the APR Expander Heads for 1/2", 3/4" and 1" PEX tubing. The kit also includes the graphite lubricant for the tool and a durable carrying case for all kit components. The APR Blunt Expander Tool expands the Wirsbo AQUAPEX tubing in order to insert the APR fitting into the tubing. This is a required component of the APR fitting system for 1/2", 3/4", 1" and 1 1/4" Wirsbo AQUAPEX tubing.

**Note:** The APR Blunt Expander Tool and associated expander heads are not interchangeable with the ProPEX Expander Tools and associated expander heads.

Part No.	Part Description	Each Qty.	Pkg. Qty.	List Price/Ea.
◀ K6285010	APR Blunt Expander Tool Kit	1	-	\$647.05
◀ K6280001	APR Blunt Expander Tool only, includes case	1	-	\$278.25

## APR Blunt Expander Head



All Blunt Expander heads listed below are used with the APR Blunt Expander Tool.

**Note:** The APR Blunt Expander Heads are not compatible with the ProPEX Expander Tools.

Part No.	Part Description	Each Qty.	Pkg. Qty.	List Price/Ea.
◀ K6280500	1/2" APR Blunt Expander Head	1	-	\$129.40
◀ K6280750	3/4" APR Blunt Expander Head	1	-	\$129.40
◀ K6281000	1" APR Blunt Expander Head	1	-	\$166.45
◀ K6281250	1 1/4" APR Blunt Expander Head	1	-	\$178.70

◀ Discontinued item; available while quantities last. Please contact Uponor Customer Service for availability. All sales are final.