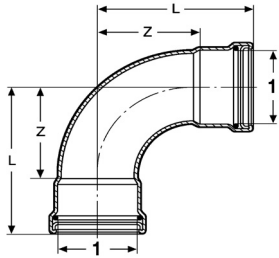


Dimensional Documentation

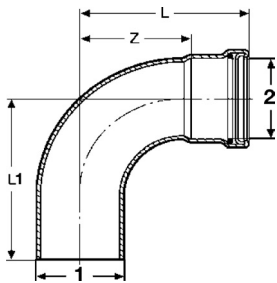
viega

ProPress XL-C



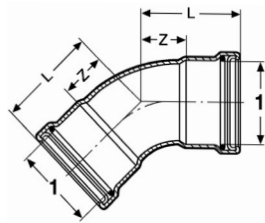
Elbow 90° P x P (Copper) - Model 0916XL

Stock Code	Size	Z (in)	L (in)
	1		
20623	2½"	3.19	4.88
20628	3"	3.76	5.73
20633	4"	4.90	7.25



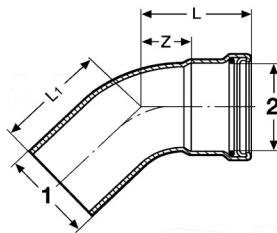
90° Elbow FTG x P (Copper) - Model 0916.1XL

Stock Code	Size	Z (in)	L (in)	L1 (in)
	1 2			
20638	2½" x 2½"	3.19	4.88	4.80
20643	3" x 3"	3.76	5.73	5.63
20648	4" x 4"	4.90	7.26	7.13



Elbow 45° P x P (Copper) - Model 0926XL

Stock Code	Size	Z (in)	L (in)
	1		
20653	2½"	1.48	3.18
20658	3"	1.73	3.70
20663	4"	1.96	4.63

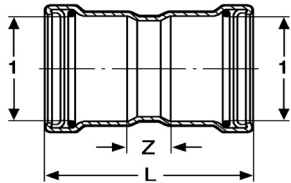


Elbow 45° FTG x P (Copper) - Model 0926.1XL

Stock Code	Size	Z (in)	L (in)	L1 (in)
	1 2			
20668	2½" x 2½"	1.48	3.18	3.10
20673	3" x 3"	1.73	3.70	3.60
20678	4" x 4"	2.20	4.57	4.49

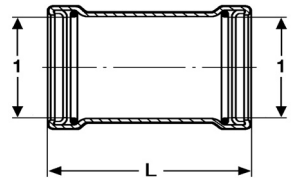
Dimensional Documentation

viega



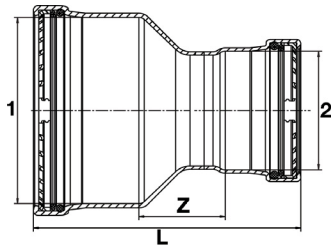
Coupling P x P with Stop (Copper) - Model 0915XL

Stock Code	Size	Z (in)	L (in)
	1		
20728	2½"	0.95	4.33
20733	3"	0.98	4.92
20738	4"	1.06	5.79



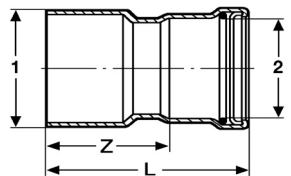
Coupling P x P No Stop (Copper) - Model 0915.5XL

Stock Code	Size	L (in)
	1	
20743	2½"	4.33
20748	3"	4.92
20753	4"	5.79



Reducer P x P (Copper) - Model 0915.2XL

Stock Code	Size		Z (in)	L (in)
	1	2		
20685	2½"	1"	1.76	4.36
20690	2½"	1¼"	1.61	4.34
20695	2½"	1½"	1.52	4.64
20700	2½"	2"	1.41	4.69
20705	3"	1½"	1.78	5.17
20710	3"	2"	1.53	5.08
20715	3"	2½"	1.41	5.07
20720	4"	2"	2.06	6.00
20725	4"	2½"	1.93	5.99
20730	4"	3"	1.70	6.03

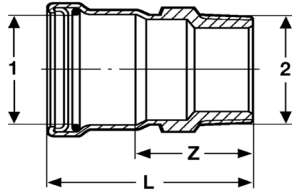


Reducer FTG x P (Copper) - Model 0915.1XL

Stock Code	Size		Z (in)	L (in)
	1	2		
20814	2½"	1"	3.61	4.52
20815	2½"	1¼"	3.47	4.49
20813	2½"	1½"	3.41	4.84
20758	2½"	2"	2.28	3.86
20817	3"	1¼"	3.98	5.00
20818	3"	1½"	3.91	5.34
20763	3"	2"	3.02	4.61
20768	3"	2½"	2.56	4.25
20773	4"	2"	4.57	6.18
20778	4"	2½"	4.34	6.15
20783	4"	3"	4.17	6.14

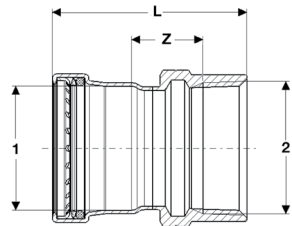
Dimensional Documentation

viega



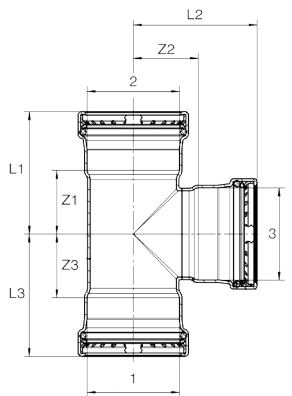
Adapter P x MPT (Copper) - Model 0911XL

Stock Code	Size	Z (in)	L (in)
	1 2		
20823	2½" x 2½" MPT	2.76	4.45
20828	3" x 3" MPT	2.84	4.80
20838	4" x 4" MPT	3.13	5.49



Adapter P x FPT (Copper) - Model 0912XL

Stock Code	Size	Z (in)	L (in)
	1 2		
20819	2½" x 2½" FPT	1.53	4.15
20829	3" x 3" FPT	1.84	4.82
20839	4" x 4" FPT	2.09	5.55



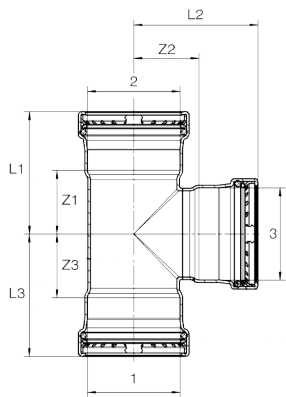
Tee P x P x P (Copper) - Model 0918XL

Stock Code	Size	Z1 (in)	Z2 (in)	Z3 (in)	L1 (in)	L2 (in)	L3 (in)
	1 2 3						
20684	2½" x ¾" x 2½"	1.83	1.87	3.23	3.52	3.56	4.13
20689	2½" x 1" x 2½"	1.83	1.87	3.25	3.52	3.56	4.15
20694	2½" x 1¼" x 2½"	1.83	1.87	3.20	3.52	3.56	4.23
20699	2½" x 1½" x 2½"	1.83	1.91	3.14	3.52	3.60	4.57
20704	2½" x 2" x ¾"	1.04	1.61	1.59	2.74	2.52	3.17
20709	2½" x 2" x 1"	1.04	1.77	1.65	2.74	2.67	3.24
22283	2½" x 2" x 1½"	1.30	1.78	1.92	2.99	3.21	3.50
22278	2½" x 2" x 2"	1.50	1.78	2.27	3.19	3.36	3.85
20714	2½" x 2" x 2½"	1.83	1.91	2.41	3.52	3.60	4.00
22298	2½" x 2½" x ¾"	0.91	1.58	0.91	2.60	2.48	2.60
22303	2½" x 2½" x ½"	0.91	1.52	0.91	2.60	2.27	2.60
22293	2½" x 2½" x 1"	1.04	1.77	1.04	2.74	2.68	2.74
22288	2½" x 2½" x 1¼"	1.16	1.76	1.16	2.85	2.79	2.85
20803	2½" x 2½" x 1½"	1.30	1.78	1.30	2.99	3.21	2.99
20688	2½" x 2½" x 2"	1.54	1.75	1.54	3.23	3.34	3.23
20683	2½" x 2½" x 2½"	1.83	1.87	1.83	3.52	3.57	3.52
20719	3" x ¾" x 3"	2.07	2.15	3.82	4.04	4.11	4.72
20724	3" x 1" x 3"	2.07	2.15	3.96	4.04	4.11	4.862
20729	3" x 1¼" x 3"	2.07	2.15	3.83	4.04	4.11	4.86

Continued on next page

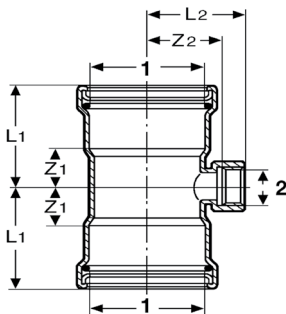
Dimensional Documentation

viega



Tee P x P x P (Copper) - Model 0918XL (continued from previous page)

Stock Code	Size	Z1 (in)	Z2 (in)	Z3 (in)	L1 (in)	L2 (in)	L3 (in)
	1 2 3						
20727	3" x 1½" x 3"	2.07	2.15	3.71	4.04	4.11	5.14
20732	3" x 2" x 2"	1.56	2.00	2.34	3.52	3.59	3.92
20734	3" x 2" x 2½"	1.85	2.13	2.63	3.82	3.82	4.21
20739	3" x 2" x 3"	2.07	2.15	2.85	4.04	4.11	4.43
20744	3" x 2½" x 2"	1.56	2.03	2.07	3.52	3.61	3.76
20749	3" x 2½" x 2½"	1.85	2.15	2.36	3.82	3.85	4.06
20754	3" x 2½" x 3"	2.07	2.15	2.58	4.04	4.11	4.27
20759	3" x 3" x ½"	0.93	1.76	0.93	2.89	2.50	2.89
22323	3" x 3" x ¾"	0.93	1.86	0.93	2.89	2.77	2.89
22308	3" x 3" x 1"	1.06	2.02	1.06	3.03	2.92	3.03
22313	3" x 3" x 1¼"	1.18	2.01	1.18	3.15	3.04	3.15
20798	3" x 3" x 1½"	1.32	2.03	1.32	3.29	3.45	3.29
20698	3" x 3" x 2"	1.56	2.00	1.56	3.52	3.59	3.52
20703	3" x 3" x 2½"	1.85	2.15	1.85	3.82	3.85	3.82
20693	3" x 3" x 3"	2.07	2.21	2.07	4.04	4.18	4.04
20774	4" x 3" x 2"	1.59	2.57	3.33	3.96	4.15	5.30
20784	4" x 3" x 3"	2.11	2.66	3.84	4.47	4.63	5.81
20788	4" x 4" x ½"	1.08	2.24	1.08	3.45	2.99	3.45
20793	4" x 4" x ¾"	1.08	2.32	1.08	3.45	3.22	3.45
20794	4" x 4" x 1"	1.36	2.52	1.36	3.72	3.42	3.72
20795	4" x 4" x 1¼"	1.36	2.50	1.36	3.72	3.54	3.72
20808	4" x 4" x 1½"	1.36	2.52	1.36	3.72	3.95	3.72
20713	4" x 4" x 2"	1.59	2.53	1.59	3.86	4.11	3.85
20718	4" x 4" x 2½"	1.89	2.65	1.89	4.25	4.35	4.25
20723	4" x 4" x 3"	2.11	2.69	2.11	4.47	4.65	4.47
20708	4" x 4" x 4"	2.60	2.75	2.60	4.96	5.11	4.96



Tee P x P x FPT (Copper) - Model 0917.2XL

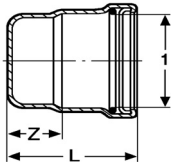
Stock Code	Size	Z1 (in)	Z2 (in)	L1 (in)	L2 (in)
	1 2				
20883	2½" x ¾" FPT	1.02	1.78	2.72	2.34
20878	2½" x 2" FPT	1.54	1.90	3.23	2.60
20893	3" x ¾" FPT	1.04	2.03	3.01	2.59
20888	3" x 2" FPT	1.56	2.16	3.52	2.85
20873	4" x ¾" FPT	1.08	2.53	3.34	3.09
20868	4" x 2" FPT	1.59	2.69	3.96	3.38

Viega... The global leader in plumbing, heating and pipe joining systems

301 N. Main, 9th Floor • Wichita, KS 67202 • Ph: 8009769819 • Fax: 3164257618 • www.viega.com

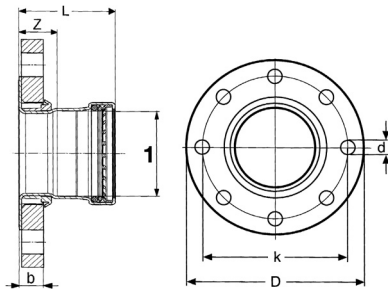
Dimensional Documentation

viega



Cap P (Copper) - Model 0956XL

Stock Code	Size	Z (in)	L (in)
	1		
20833	2½"	0.39	2.09
20843	3"	0.39	2.36
20848	4"	0.39	2.76



Adapter Flange P x Flange (Copper/Steel) - Model 0959.5XL

Stock Code	Size	Z (in)	L (in)	b (in)	k (in)	D (in)	d (in)
	1						
20853	2½"	1.09	2.79	0.70	5.51	7.09	0.75
20858	3"	1.20	3.17	0.79	5.98	7.48	0.75
20863	4"	1.29	3.66	0.86	7.52	9.06	0.75

Viega... The global leader in plumbing, heating and pipe joining systems

301 N. Main, 9th Floor • Wichita, KS 67202 • Ph: 8009769819 • Fax: 3164257618 • www.viega.com