

**DESCRIPTION**

Complete vitreous china top spud small urinal.

**FLUSH CYCLE**

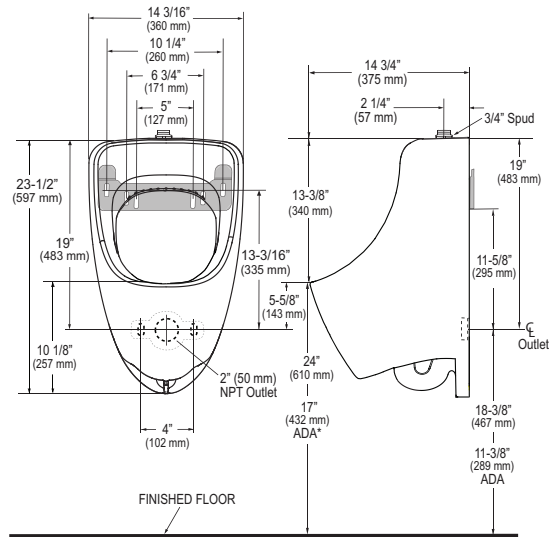
- SU-7006-A-1.0 (1.0 gpf/3.8 Lpf)  
Code: 1107006



**SPECIFICATIONS**

**Urinal**

- Wall hung vitreous china
- Washdown flushing action
- ¾" I.P.S. top spud inlet
- 2" NPT outlet flange included
- All mounting hardware included
- Integral flushing rim
- 100% factory flush tested
- Carrier not included
- Vandal resistant strainer assembly included
- Compliant to the applicable sections of ASME A112.19.2/CSA B45.1



**NOTE:** All vitreous china dimensions shown in these drawings are nominal. Dimensions can vary within the tolerances established in the governing ASME A112.19.2/CSA B45.1 standard. Please take this into consideration when planning rough-in and plumbing layouts.

**Product Specification**

Washdown urinal shall be made of vitreous china with a ¾" top spud. Urinal shall have a 14 ¾" rim from finished wall. Urinal shall include a vandal resistant strainer, inlet spud, and hanger. Urinal shall be Sloan Model SU-7006-A-1.0.



This fixture meets or exceeds the following specifications:  
The American Disabilities Guidelines and ANSI A117.1  
when installed according to these requirements.



NOTE: Plumbing System Requirements  
√ Minimum **Flowing** Pressure: 25 PSI  
√ Maximum Static Pressure: 80 PSI

This space for Architect/Engineer approval	
Job Name	Date
Model Specified	Quantity
Variations Specified	
Customer/Wholesaler	
Contractor	
Architect	



Sloan Headquarters  
10500 Seymour Avenue  
Franklin Park, IL 60131  
Phone: 1-800-9-VALVE-9  
Fax: 1-800-447-8329  
www.sloanvalve.com