

PlenumSafe™

» E84 Clamps, Hangers & Pipe Supports



Complete

A variety of sizes and models means the right pipe clamp or hanger for any return air plenum application.

Non-Corrosive

Non-metallic polyvinylidene flouride (PVDF) material eliminates all worries about rust or dissimilar metals.

Compliant

Meets the ASTM E84 25/50 flame spread and smoke opacity rating as well as the UL94 V-0 flame rating.

Supply

Drainage

Support

www.siouxchief.com

TAKE THE FIELD.



Features & Benefits

Complete

PlenumSafe™ clamps and hangers are designed for return air plenums. From standard tube and suspension clamps or metal stud insulators to Sioux Chief's patented TouchDown™ Clamp and PowerBar™ Universal Bracketing System, you can rest easy knowing we have the right product for each application need.



Non-Corrosive

Made from durable, high quality, engineered virgin resin, our PlenumSafe products will not rust or corrode. They meet the flame spread and smoke density index specifications required by national standards and are made in the USA.



Compliant

E84 PlenumSafe hangers are certified and listed by UPC/IAPMO. The International Mechanical Code (IMC) and Uniform Mechanical Code (UMC) require that materials installed in return air plenums must comply to the ASTM-E84 or UL 723 25/50 smoke index and flame spread index.



International Mechanical Code (IMC) | Section 602 Plenums

Except as required by Sections 602.2.1 through Section 602.2.1.6 materials within plenums shall be non-combustible or shall have a flame spread index of not more than 25 and a smoke developed index of not more than 50 when tested in accordance with ASTM E84 or UL 723.

Uniform Mechanical Code (UMC) | Section 602.2 Combustibles within Ducts & Plenums

Materials exposed within ducts or plenums shall be noncombustible or shall have a flame spread index not greater than twenty-five (25), when tested as a composite product in accordance with one of the following test methods: NFPA 255 Method of Testing of Surface Burning Characteristics of Building Materials or UL 723, Test for Surface Burning Characteristics of Building Materials.

Installation Tips



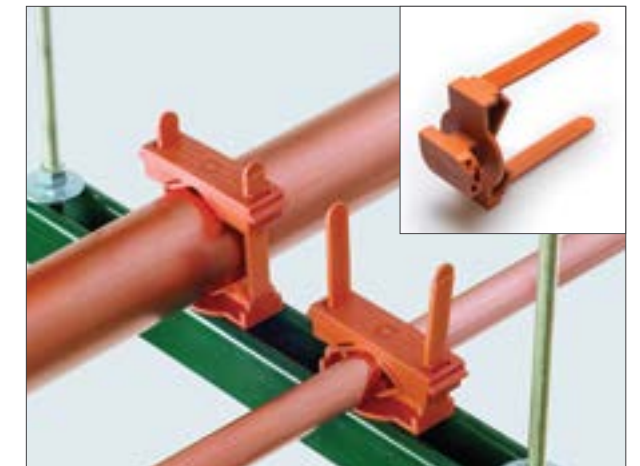
E84 PipeEye™ Metal Stud Insulators have a 1-11/32 O.D. and are compatible with Copper, PEX or CPVC in sizes ranging from 1/2" through 1" CTS.



PipeEye Suspension brackets are designed with the same 1-11/32" hole as a standard metal stud punch for use with PipeEye grommets. Secure the brackets directly to ceilings, decks, walls or vent pipes for tight installations where space is limited.



E84 TouchDown clamps and TouchDown II clamps fit PowerBar and PowerBar Mini Strut brackets. The releasable locking mechanism allows for variable clamping tension for expansion and contraction. Clamping ranges are 1/2" - 2" CTS or 3/8" - 2" IPS (Schedule 40).



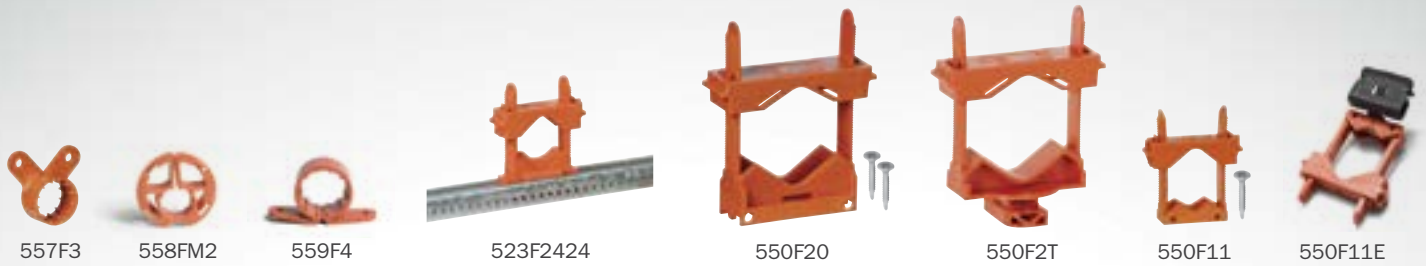
E84 TouchDown II strut clamp fits either 1-5/8" or 2-5/8" channel strut. Simply insert the foot into the channel and twist. Clamping ranges are 1/2" - 2" CTS or 3/8" - 2" IPS (Schedule 40).

PipeEye™ Grommets:



PipeEye™ Suspension Brackets:





Buying Information

ITEM #	DESCRIPTION	U/M	PKG.	MIN. QTY.	CASE QTY.	LIST PRICE
Suspension Clamp						
557F2	E84 1/2" CTS Suspension Clamp	EA	B	100	1000	\$1.30
557F3	E84 3/4" CTS Suspension Clamp	EA	B	50	500	\$1.56
557F4	E84 1" CTS Suspension Clamp	EA	B	50	500	\$2.13
557F5	E84 1-1/4" CTS Suspension Clamp	EA	B	10	10	\$2.96
557F6	E84 1-1/2" CTS Suspension Clamp	EA	B	10	10	\$3.64
557F7	E84 2" CTS Suspension Clamp	EA	B	10	10	\$4.37
Insulator						
558FM2	E84 1/2" CTS PipeEye	EA	B	10	100	\$1.25
558FM3	E84 3/4" CTS PipeEye	EA	B	10	100	\$1.35
558FM4	E84 1" CTS PipeEye	EA	B	5	25	\$1.46
558F23	E84 1/2" & 3/4" CTS BiFolator	EA	B	100	1000	\$1.30
Tube Clamp						
559F2	E84 1/2" CTS Tube Clamp	EA	B	100	1000	\$1.30
559F3	E84 3/4" CTS Tube Clamp	EA	B	50	500	\$1.56
559F4	E84 1" CTS Tube Clamp	EA	B	50	500	\$2.96
559F5	E84 1-1/4" CTS Tube Clamp	EA	B	10	10	\$3.64
559F6	E84 1-1/2" CTS Tube Clamp	EA	B	10	10	\$3.64
559F7	E84 2" CTS Tube Clamp	EA	B	10	10	\$4.37
PowerBar Universal Bracket						
523F2424	(1) Bracket, (2) E84 TouchDown Clamps, (4) #8 Self-Drilling Pan Head Phillips Screws	EA	B	50	50	\$7.64
523F5500	E84 TouchDown Clamps: (100) Bases, (100) Bridges, (100) Screws - Bulk	EA	B	100	100	\$2.03
TouchDown Clamp						
550F11	E84 TouchDown Clamp: (1) Bridge, (1) Base, (1) #6 Self-Drilling Bugle Head Phillips Screws - Bagged	EA	B	100	100	\$3.12
550F11E	E84 TouchDown Beam Clamp - Bagged	EA	B	25	100	\$4.68
TouchDown II Clamp						
550F20	E84 TouchDown II: (1) Bridge, (1) Base, (2) #6 Self-Drilling Bugle Head Phillips Screws - Bagged	EA	B	25	25	\$8.27
550F20E	E84 TouchDown II Beam Clamp - Bagged	EA	B	25	25	\$9.72
550F2T	E84 TouchDown II: Strut Clamp - Bagged	EA	B	5	5	\$8.79
550F22T	E84 TouchDown II Strut Clamp 50/box - Bulk	BX	B	1	1	\$433.68



File 3163

PACKAGING:
B = Bulk

Material Specifications

Polyvinylidene Fluoride (PVDF)
 Maximum Temperature: 140°F (60°C) continuous
 Maximum Suspended Load Rating: 25-lbs.
 TouchDown Clamp Range: 0.375" - 1.315"
 TouchDown II Clamp Range: 0.625" - 2.375"

24110 South Peculiar Drive
 Peculiar, Missouri 64078
P 1.800.821.3944
F 1.800.758.5950

DISTRIBUTED BY

#LT3PLENUMSFE

www.siouxchief.com

© 09/13 PLENUM SAFE

