

BOTTOM RETURN CONVERSION KIT RXHK-

▲ WARNING

TO ENSURE PROPER INSTALLATION AND OPERATION OF THIS PRODUCT, COMPLETELY READ ALL INSTRUCTIONS PRIOR TO ATTEMPTING TO ASSEMBLE, INSTALL, OPERATE, MAINTAIN OR REPAIR THIS PRODUCT. UPON UNPACKING OF THE BOTTOM RETURN CONVERSION KIT, INSPECT ALL PARTS FOR DAMAGE PRIOR TO INSTALLATION AND START UP.

BOTTOM RETURN CONVERSION KIT RXHK-

The RXHK Bottom Return Conversion Kit is used in applications where the air handler needs to be converted from the factory standard front return to bottom return. Table 1 illustrates which accessory model goes with each model of air handler and the list of parts that will be required for proper installation:

INSTALLATION INSTRUCTIONS:

1. Remove bottom block off plate by removing one screw located near the front of the unit and sliding the plate from underneath the drain pan. Reference Figures 2-4.
2. Install the #10-24 nut zert by inserting the nut into the hexagonal hole provided on the unit.

3. Place the nut zert installation wrench in front of the nut zert. Make sure that the hexagonal portion on the wrench is engaged with the nut zert. Reference Figure 5.
4. Thread the machine screw provided and tighten until the nut zert is securely fastened into the air handler. Reference Figure 6.
5. Repeat steps 3 and 4 to install the nut zert on the opposite side.
6. Insert the provided thumb screws into the mounting holes on the coil door and thread the #10 retaining washer on the insulation side of the coil door. This will ensure that the thumb screws will not be lost during routine maintenance such as filter changes. Reference Figure 7.
7. Install coil door and tighten the thumb screws into the nut zerts which were installed in steps 3 and 4.

Accessory Number	Indoor Unit
RXHK-B01	RHAL-FR18
	RHAL-FR24
	RHBL-FR24
RXHK-B02	RHAL-FR30
	RHAL-FR36
	RHBL-FR36

Qty.	Description
1	Coil Door
2	#10-24 Thumb Screws
2	#10-24 Nut Zert
1	Nut Zert Wrench
1	#10-24 Machine Screw

FIGURE 1

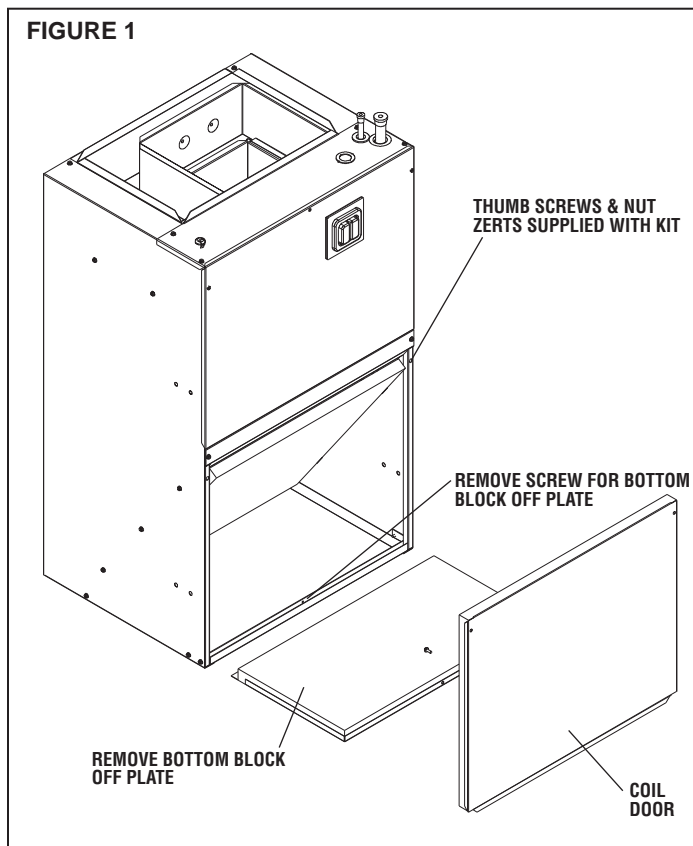


FIGURE 2

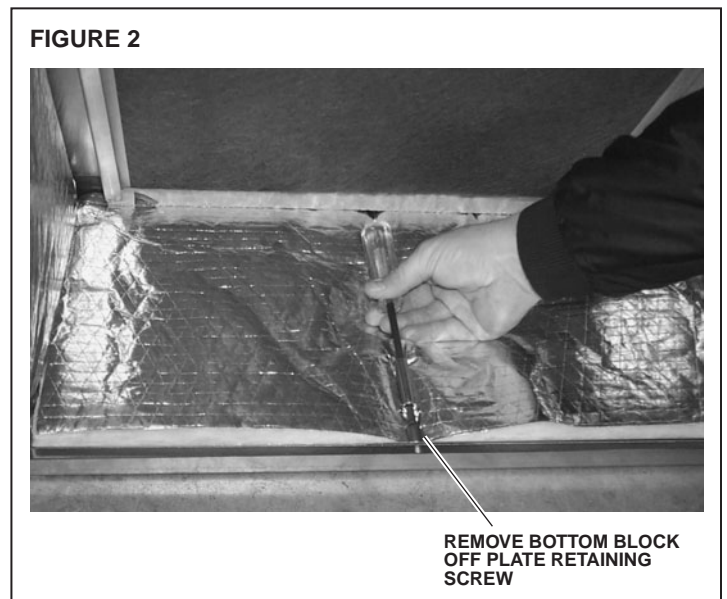
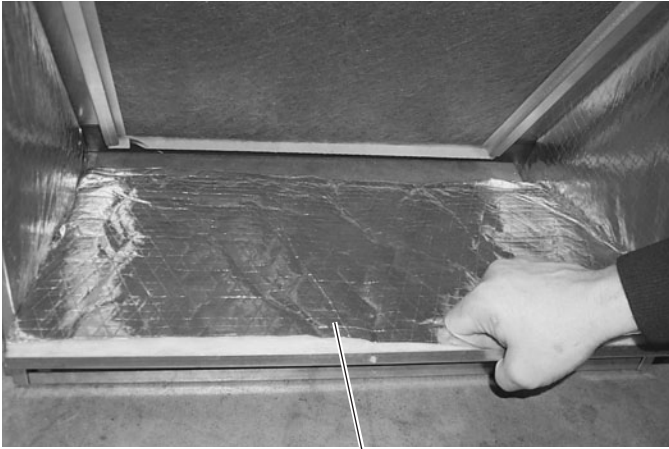


FIGURE 3



REMOVE DOOR

FIGURE 4



**BOTTOM BLOCK OFF
PLATE REMOVED**

FIGURE 5

5/16" BOX END WRENCH



**NUT ZERT
WRENCH**

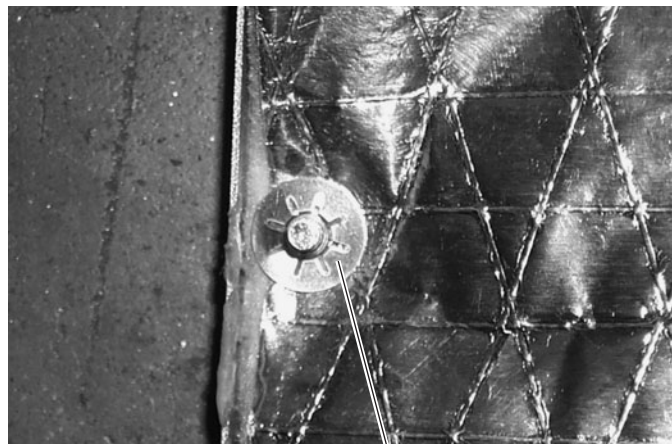
**#10-24 MACHINE
SCREW**

FIGURE 6



**NUT ZERT FIRMLY
IN PLACE**

FIGURE 7



**THREAD RETAINING WASHER
OVER THUMB SCREW**