



# SUBMITTAL COVER SHEET

PROJECT NAME \_\_\_\_\_

LOCATION \_\_\_\_\_

ARCHITECT \_\_\_\_\_

ENGINEER \_\_\_\_\_

CONTRACTOR \_\_\_\_\_

SUBMITTED BY \_\_\_\_\_ DATE \_\_\_\_\_

## UNIT SUMMARY

Quantity						
Unit Designation						
Model No.						
Total Cooling						
Sensible Cooling						
Air Ent. Evaporator						
Air Lvg. Evaporator						
Heating Input						
Heating Output						
CFM/ESP						
EER/SEER						
Electrical						
Minimum Ampacity						
Min.-Max. Breaker						
Net Unit Weight						
Accessory						
Catalog Form Number						

**ACCESSORIES:**

**NOTES:**

# SUBMITTAL SHEET FOR RGFG- MINIMUM 95% A.F.U.E. UPFLOW GAS FURNACES

Models with Input Rates from 60,000 to 120,000 BTU/HR [17.58 to 35.17 kW]



JOB NAME \_\_\_\_\_ MODEL NO. \_\_\_\_\_  
 CONTRACTOR \_\_\_\_\_ OUTDOOR UNIT MODEL NO. \_\_\_\_\_  
 ENGINEER \_\_\_\_\_ LOCATION \_\_\_\_\_  
 SUBMITTED FOR  APPROVAL  RECORD ORDER NO. \_\_\_\_\_  
 DATE \_\_\_\_\_



## Equipped with Comfort Control² System™

- Serial communication enabled
- Increased system reliability and efficiency
- 28 on-board diagnostic and operating codes
- *Active Protection™* with homeowner "Call for Service" alert
- Dual 7-segment LED display

### UNIT DATA

#### HEATING PERFORMANCE

TOTAL CAPACITY INPUT\* ..... MBH [kW]  
 TOTAL CAPACITY OUTPUT\* .. MBH [kW]  
 DESIGN TEMP. RISE ..... °F [°C] DB  
 AFUE ..... %  
 CALIFORNIA SEASONAL EFFICIENCY ..... %  
(\*uses blower motor heat)

#### SUPPLY AIR BLOWER PERFORMANCE

TOTAL AIR SUPPLY ..... CFM [L/s]  
 TOTAL RESISTANCE EXTERNAL TO UNIT ..... IWG  
 BLOWER SPEED ..... RPM  
 POWER OUTPUT REQUIREMENT .. BHP  
 MOTOR RATING ..... HP [W]  
 POWER INPUT REQUIREMENT ..... kW

#### ELECTRICAL DATA

POWER SUPPLY ..... Hz  
 TOTAL UNIT AMPACITY ..... AMPS  
 MINIMUM WIRE SIZE ..... AWG  
 MAXIMUM OVERCURRENT DEVICE FUSES/HACR BREAKER ..... AMPS

### FEATURES FOR RGFG-

- The *Comfort Control² System™* provides 28 on-board diagnostic codes and fault history codes by detecting system and electrical problems. "Call for Service" alert notification is sent to the thermostat to alert the homeowner of required service.
- Serial Communication Enhanced – When installed with a Serial Communicating Condensing Unit and user interface control (-HC-TST550CMMS) 500 Series thermostat this unit offers 4 or 2 wire installation, auto-configuration, and diagnostic messaging with full communicating capability.
- Heat exchanger is constructed of all stainless steel for maximum corrosion resistance and thermal fatigue reliability.
- Modulating Function: when used with a modulating or communicating thermostat, modulation rate between 40% and 100% of total capacity.
- Two-stage Function: when used with a two-stage thermostat, furnace operates at 40% on first stage, and stages up to 65%, then 100% for second stage.
- Multistage Function: when used with a single-stage thermostat, furnace functions as a three stage furnace operating at 40%, 65% and 100% of total capacity.
- Reduced firing rates, electrically efficient ECM 3.0 motor, and solid doors provide the ultimate in quiet operation.
- Low speed constant fan.
- Constant temperature rise for superior comfort.
- Seven segment LED for system diagnostics.
- Diagnostic history for troubleshooting.
- Variable speed induced draft motor.
- Hot surface ignition with remote sense.
- Optional indoor or outdoor combustion air.

### FIELD INSTALLED ACCESSORIES

- Vent Termination Kits Concentric:  
 Vertical/Horizontal = RXGY-G02, RXGY-D02, RXGY-E03 .....   
 Condensate Pump Kit: RXGY-B01 .....   
 Neutralizer Kit: RXGY-A01 .....   
 Return Air Plenum (RXGR-C17B, 21B, 24B) .....   
 External Bottom Filter Rack: RXGF-CB .....   
 Communicating Modulating Furnace Thermostat:  
 (-)HC-TST550CMMS .....   
 External Side Filter Rack: RXGF-CA .....

#### FILTER RACK FILTER SIZES\* INCHES [mm]

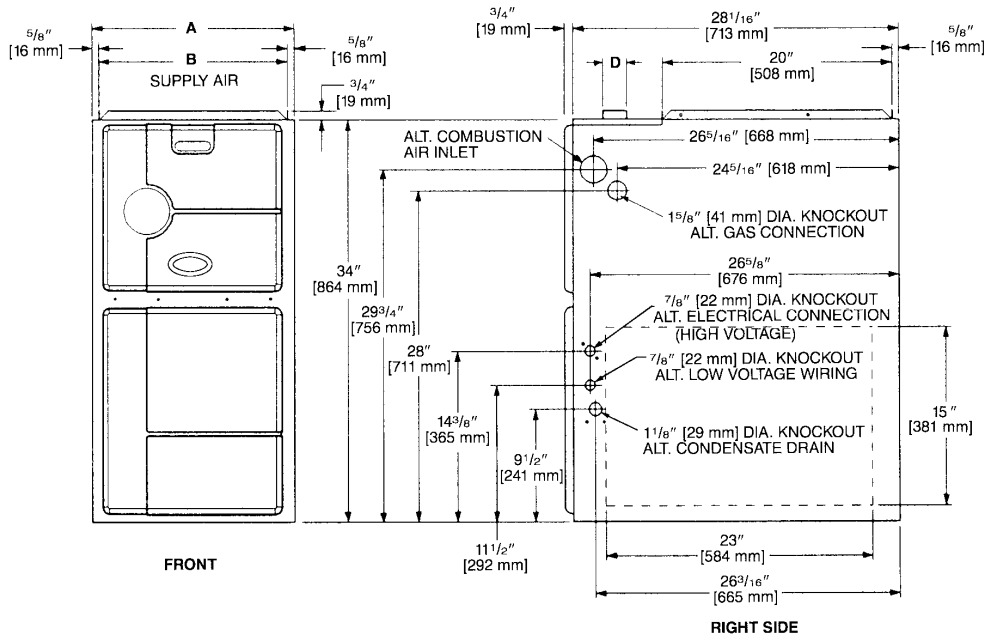
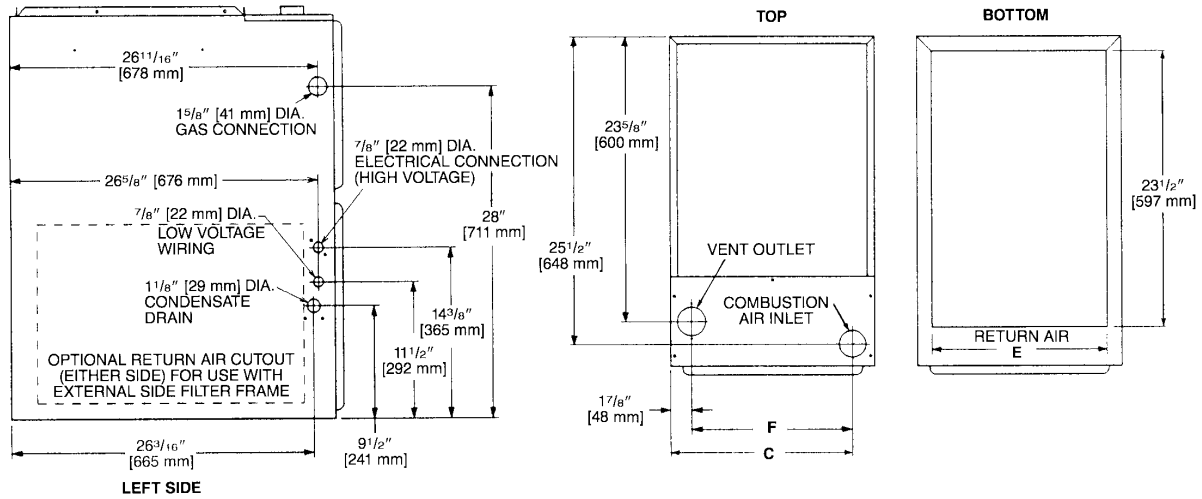
MODEL RGFG-	RXGF-CB (BOTTOM)	RXGF-CA (SIDE)
06	15 <sup>3</sup> / <sub>4</sub> x 25 [400 x 635]	15 <sup>3</sup> / <sub>4</sub> x 25 [400 x 635]
07	15 <sup>3</sup> / <sub>4</sub> x 25 [400 x 635]	15 <sup>3</sup> / <sub>4</sub> x 25 [400 x 635]
09	19 <sup>1</sup> / <sub>4</sub> x 25 [489 x 635]	15 <sup>3</sup> / <sub>4</sub> x 25 [400 x 635]
10	19 <sup>1</sup> / <sub>4</sub> x 25 [489 x 635]	15 <sup>3</sup> / <sub>4</sub> x 25 [400 x 635]
12	22 <sup>3</sup> / <sub>4</sub> x 25 [578 x 635]	15 <sup>3</sup> / <sub>4</sub> x 25 [400 x 635]

\*Filter racks are shipped without filters.  
 Filters shipped with furnace may be used or a suitable 1" [25.4 mm] filter.



[ ] Designates Metric Conversions

# UPFLOW MODELS



MODEL RGFG-	A	B	C	D	E	F	LEFT SIDE	MINIMUM CLEARANCE (IN.) [mm]				
								RIGHT SIDE	BACK	TOP	FRONT	VENT
06	17 <sup>1</sup> / <sub>2</sub> [445]	16 <sup>3</sup> / <sub>8</sub> [416]	15 <sup>5</sup> / <sub>8</sub> [397]	2 [51]	15 [422]	13 <sup>13</sup> / <sub>16</sub> [351]	0	0	0	1 [25]	2 [51]	0
07	17 <sup>1</sup> / <sub>2</sub> [445]	16 <sup>3</sup> / <sub>8</sub> [416]	15 <sup>5</sup> / <sub>8</sub> [397]	2 [51]	15 [422]	13 <sup>13</sup> / <sub>16</sub> [351]	0	0	0	1 [25]	2 [51]	0
09	21 [533]	19 <sup>7</sup> / <sub>8</sub> [505]	19 <sup>1</sup> / <sub>8</sub> [487]	2 [51]	18 <sup>1</sup> / <sub>2</sub> [511]	17 <sup>5</sup> / <sub>16</sub> [440]	0	0	0	1 [25]	2 [51]	0
10	21 [533]	19 <sup>7</sup> / <sub>8</sub> [505]	19 <sup>1</sup> / <sub>8</sub> [487]	2 [51]	18 <sup>1</sup> / <sub>2</sub> [511]	17 <sup>5</sup> / <sub>16</sub> [440]	0	0	0	1 [25]	2 [51]	0
12	24 <sup>1</sup> / <sub>2</sub> [622]	23 <sup>3</sup> / <sub>8</sub> [594]	22 <sup>5</sup> / <sub>8</sub> [575]	2 [51]	22 [600]	20 <sup>13</sup> / <sub>16</sub> [529]	0	0	0	1 [25]	2 [51]	0

[ ] Designates Metric Conversions

**Before proceeding with installation, refer to installation instructions packaged with each model, as well as complying with all Federal, State, Provincial, and Local codes, regulations, and practices.**

"In keeping with its policy of continuous progress and product improvement, Manufacturer reserves the right to make changes without notice."