



MPSH07-20BY(V)

Parts List
31-May-2014



This parts list is current as of the above revision date.

To find your Daikin Applied parts distributor, call 1-800-377-2787 or visit www.DaikinApplied.com

Form Number: 92-42807-MPSH07-20BY(V)

Table of Contents

Model Explanation	Page 3
Parts Numbers	
Panels - Miscellaneous H07-H10 (1)	Page 4
Panels - Miscellaneous H07-H10 (2)	Page 5
Panels - Miscellaneous H15 (1)	Page 6
Panels - Miscellaneous H15 (2)	Page 7
Panels - Miscellaneous H20 (1)	Page 8
Panels - Miscellaneous H20 (2)	Page 9
Electrical Group H07	Page 10
Electrical Group H10	Page 11
Electrical Group H15	Page 12
Electrical Group H20	Page 13
Fan Group	Page 14
Blower Group H07-H10	Page 15
Blower Group H15-H20	Page 16
Coil Parts H07-H10	Page 17
Coil Parts H15	Page 18
Coil Parts H20	Page 19
Compressor Group H07-H10	Page 20
Compressor Group H15-H20	Page 21
Heater Kits	Page 22
Accessories H07-H10	Page 23
Accessories M15-M20	Page 24
Drawings/Photographs	
Exploded View H07-H10	Page 25
Exterior - Front H07-H10	Page 26
Exterior - Back H07-H10	Page 26
Filter-Coil Assembly H07-H10	Page 27
Condenser Coil Assembly H07-H10	Page 27
Front Panel Brackets H07-H10	Page 28
Filter Frame Assembly H07-H10	Page 29
Blower Assembly H07-H10	Page 29
Low Voltage Shields H07-H10	Page 31
Control Box H07-H10	Page 30
Exterior - Front H15	Page 32
Exterior - Back H15	Page 32
Front Panel Brackets H15	Page 33
Heat Compartment H15	Page 34
Condenser Bulkhead H15	Page 34
Base Pan Assembly H15-H20	Page 35
Base Rail Assembly H15-H20	Page 35
Control Box H15-H20	Page 36
Interior - Front H15	Page 37
Filter Frame Assembly H15-H20	Page 37
Blower Assembly H15-H20	Page 38
Condenser Coil H15	Page 39
Condenser Coil Airstop H15	Page 40
Exterior - Front H20	Page 41
Exterior - Back H20	Page 41
Front Panel Brackets H20	Page 42
Interior - Coil (Airstop) H20	Page 43
Heat Compartment H20	Page 44
Condenser Bulkhead H20	Page 44
Notes	Page 45

No.	Notes	MODEL UNIT SIZE VINTAGE/HEAT DESIGNATION	MPS H07 BY	MPS H10 BY
PANELS - RAILS, BASE PANS, INSIDE CABINET				
BASE RAILS:				
A		Base Rail - Front	AE-90575-15	AE-90575-15
B		Base Rail - Right	AE-90576-03	AE-90576-03
C		Base Rail - Rear	AE-90575-04	AE-90575-04
D		Base Rail - Left	AE-90576-04	AE-90576-04
BASE PANS:				
E		Outdoor Coil Base Pan (includes insulation)	AS-90577-14D	AS-90577-23D
F		Indoor Coil Base Pan (includes insulation)	AS-90577-12	AS-90577-12
INSIDE CABINET:				
G		Entry Plate	AE-90614-02	AE-90614-02
H		Entry Plate	AE-90614-01	AE-90614-01
J		Heat Compartment Side	AE-90598-09	AE-90598-09
K		Blower Deck	AS-90592-13	AS-90592-13
L		Wireway	AE-90718-05	AE-90718-05
M		Condenser Bulkhead	AS-90609-23	AS-90609-36

No.	Notes	MODEL UNIT SIZE VINTAGE/HEAT DESIGNATION	MPS H07 BY	MPS H10 BY
PANELS - FRONT				
1		Control Box Door Assembly - w/Hinges, Latch, Gasket, Insulation	AS-102872-14D	AS-102872-23D
2a		Bracket - Top Panel (Left)	AS-102859-16D	AS-102859-16D
2b		Bracket - Top Panel (Center)	AS-102859-15D	AS-102859-15D
2c		Post - Blower Section	AS-102682-12D	AS-102682-15D
3a		Bracket - Bottom Panel (Left)	AS-102859-17D	AS-102859-17D
3b		Bracket - Blower/Heater Compartment	AS-102859-14D	AS-102859-14D
3c		Bracket - Bottom Panel (Right)	AS-102859-13D	AS-102859-13D
		Latch Assembly - Control Box Door (2)	64-103465-01	64-103465-01
4		Post Assembly - Indoor Coil Section	AS-90620-17D	AS-90620-23D
5		Control Box Cover	AE-90713-02	AE-90713-06
6		Control Mounting Plate	AE-90712-06	AE-90712-06
7a		Low Voltage Shield (After F3512) - Upper Angled	AE-90742-12	AE-90742-12
7b		Low Voltage Shield (After F3512) - Lower	AE-90742-11	AE-90742-13
7c		Low Voltage Shield (After F3512) - Middle Strip	AE-90742-09	AE-90742-14
9		Mounting Bracket	AE-90779-02	AE-90779-02
10		Electric Heat Blockoff Plate Assembly (models with no heat)	AS-90720-02	AS-90720-02
11		Terminal Block	See Electrical Group	
12		Electric Heat Access Panel Assembly - w/Hinges, Latch, Gasket, Insulation	AS-102872-18D	AS-102872-18D
		Latch Assembly - Electric Heat Door (2)	64-103465-01	64-103465-01
13		Power Entry Plate Assembly	AS-90774-11D	AS-90774-11D
14		Blower Access Panel Assembly - w/Hinges, Latch, Gasket, Insulation	AS-102872-16D	AS-102872-22D
		Latch Assembly - Blower Access Panel (3)	64-103465-01	64-103465-01
16		Heat Mounting Frame Assembly	AS-90754-02	AS-90754-02
17		Condenser Coil Access Panel-Front	AS-90631-11D	AS-90631-18D
18		Front Corner Post	AS-90701-05D	AS-90701-10D

No.	Notes	MODEL UNIT SIZE VINTAGE/HEAT DESIGNATION	MPS H07 BY	MPS H10 BY
PANELS - RIGHT, REAR AND LEFT SIDES				
RIGHT:				
19		Air Stop	N/A	N/A
20		Louver Panel Assembly	AS-90789-01D	AS-90789-01D
REAR:				
21		Rear Corner Post	AS-90702-04D	AS-90702-08D
22		Condenser Coil Access Panel-Rear	AS-90631-12D	AS-90631-19D
23		Rear Panel	AS-90618-02D	AS-90618-09D
24		Supply Cover	AS-90626-02D	AS-90626-02D
25		Return Cover	AS-90628-02D	AS-90628-02D
LEFT:				
26		Upper Left Panel	AS-90624-03D	AS-90624-03D
27		Lower Left Panel	AS-90624-04D	AS-90624-04D
28		Left Corner Panel	AS-90755-07D	AS-90755-08D
29		Plate - Receptacle	AS-90756-02D	AS-90756-02D
30		Plate - Disconnect	AS-90756-03D	AS-90756-03D
31		Button Plug (2)	45-22980-06	45-22980-06
32		Button Plug	45-22980-05	45-22980-05
TOP:				
33		Top Panel Assembly	AS-90616-06D	AS-90616-06D
34		Condenser Top Panel	AS-90703-08D	AS-90703-08D
35		Venturi	AS-90632-03D (2)	AS-90632-03D (2)
36		Wire Grille	95-100906-09 (2)	95-100906-09 (2)
43		Drain Pan - Removable	See Coil Group	

No.	Notes	MODEL UNIT SIZE VINTAGE/HEAT DESIGNATION	MPS H15 BY
PANELS - RAILS, BASE PANS, INSIDE CABINET			
BASE RAILS:			
A		Front	AS-90827-03
B		Right	AE-90576-06
C		Rear	AS-90827-04
D		Left	AE-90576-05
BASE PANS:			
E		Outdoor Base Pan (includes insulation)	AS-90577-16D
F		Indoor Coil Base Pan - Return Air (includes insulation)	AS-90577-09
G		Indoor Coil Base Pan - Supply Air (includes insulation)	AS-90577-10
INSIDE CABINET PANEL/PIECES:			
H 1		Entry Plate	AE-90614-01
H 2		Entry Plate - Rooftop	AE-90614-01
J		Heat Compartment Side	AE-90598-08
K		Blower Deck Assembly	AS-90592-11
L		Wireway	AE-90718-04
M		Condenser Bulkhead (includes insulation)	AS-90609-33
O		Bulkhead Support	AE-102725-01
P		Primary Drain Pan	AS-103030-02
		Air Stop - Outdoor Coil- Front	AE-90706-21
		Air Stop - Outdoor Coil- Rear	AE-90706-20
U		Coil Support Top	AE-102700-07
V		Angle - Tube Support (2)	N/A

No.	Notes	MODEL UNIT SIZE VINTAGE/HEAT DESIGNATION	MPS H15 BY
PANELS - FRONT AND RIGHT SIDES			
1		Control Box Door Assembly - w/Hinges, Gasket, Insulation	AS-102872-04D
2a		Bracket - Top Panel (Left)	AS-102859-01D
2b		Bracket - Top Panel (Center)	AS-102969-01D
2c		Post - Blower Section	AS-102682-21D
3a		Bracket - Bottom Panel (Left)	AS-102859-02D
3b		Bracket - Blower/Heater Compartment	AS-102859-11D
3c		Bracket - Bottom Panel (Right)	AS-102859-12D
4		Post Assembly - Indoor Coil Section	AS-90620-15D
5		Control Box Cover	AE-90713-05
6		Control Mounting Panel	AE-90712-05
7a		Low Voltage Shield - Control Box (Upper Right)	AE-90742-07
7b		Low Voltage Shield - Control Box (Lower Left)	AE-90742-06
7c		Thermostat Chase Cover	AE-102722-01
8		Control Box Back	AS-90601-05
9		Mounting Bracket	AE-90779-02
12		Electric Heat Access Panel Assembly - w/Hinges, Gasket	AS-102872-06D
		Electric Heat Blockoff Plate Assembly (models with no heat)	AS-90720-03
13		Power Entry Plate Assembly	AS-90774-13D
14		Blower Access Panel Assembly - w/Hinges, Gasket, Insulation	AS-102872-02D
16		Mounting Frame - Heat Exchanger Frame	AS-90754-04
17		Condenser Coil Access Panel - Front	AS-90734-14D
38		Post - Outdoor Coil (Front)	
39		Post - Outdoor Coil (Rear)	See Coil Group

No.	Notes	MODEL UNIT SIZE VINTAGE/HEAT DESIGNATION	MPS H15 BY
PANELS - REAR, LEFT, AND TOP			
REAR:			
22		Condenser Coil Access Panel-Rear	AS-90734-15D
23		Rear Panel - Right	AS-90618-10D
24		Supply Cover	AS-90628-03D
25		Return Cover	AS-90628-04D
LEFT:			
26		Upper Left Panel	AS-90624-09D
27		Lower Left Panel	AS-90624-08D
28		Left Corner Panel Assembly	AS-90755-05D
		Bracket - Left Corner Panel Assembly (2)	AE-90779-01
		Gasket for receptacle plate	68-42514-08
		Gasket for disconnect plate	68-42514-09
29		Plate - Install inside Panel-Receptacle	AS-90756-02D
30		Plate - Install inside Panel-Disconnect	AS-90756-03D
31		Button Plug (3)	45-42558-01
32		Star Bushing (3)	45-18515-01
TOP:			
33a		Top Panel Assembly - Right	AS-90616-04D
33b		Top Panel Assembly - Left	AS-90616-05D
34		Top Panel	AS-90703-11D
35		Venturi	AS-90632-03D (3)
36		Wire Grille	95-100906-09 (3)
43		Drain Pan - Removable	See Coil Group

No.	Notes	MODEL UNIT SIZE VINTAGE/HEAT DESIGNATION	MPS H2O BY
PANELS - RAILS, BASE PANS, INSIDE CABINET			
BASE RAILS:			
A		Front	AS-90827-03
B		Right	AE-90576-06
C		Rear	AS-90827-04
D		Left	AE-90576-05
BASE PANS:			
E		Outdoor Base Pan (includes insulation and coil support top)	AS-90577-24D
F		Indoor Coil Base Pan - Return Air (includes insulation)	AS-90577-09
G		Indoor Coil Base Pan - Supply Air (includes insulation)	AS-90577-10
INSIDE CABINET PANEL/PIECES:			
H 1		Entry Plate	AE-90614-01
H 2		Entry Plate - Rooftop	AE-90614-02
I		Post - Blower Section	AS-102682-07D
J		Heat Compartment Side	AE-90598-08
K		Blower Deck Assembly	AS-90592-11
L		Wireway	AE-90718-04
M		Condenser Bulkhead	AS-90609-17
N		Divider Panel - Between Coils	AE-90735-05
O		Bulkhead Support	AE-102725-01
P		Primary Drain Pan	AS-103030-02
		Air Stop - Outdoor Coil- Front	AE-90706-13
		Air Stop - Outdoor Coil- Rear	AE-90706-12
U		Coil Support Top	AE-102700-03
V		Angle - Tube Support (2)	N/A

No.	Notes	MODEL UNIT SIZE VINTAGE/HEAT DESIGNATION	MPS H2O BY
PANELS - FRONT AND RIGHT SIDES			
1		Control Box Door Assembly - w/Hinges, Latch, Gasket, Insulation	AS-102872-04D
2a		Bracket - Top Panel (Left)	AS-102859-01D
2b		Bracket - Top Panel (Center)	AS-102969-01D
2c		Post - Blower Section	AS-102682-07D
3a		Bracket - Bottom Panel (Left)	AS-102859-02D
3b		Bracket - Blower/Heater Compartment	AS-102859-11D
3c		Bracket - Bottom Panel (Right)	AS-102859-12D
4		Post Assembly - Indoor Coil Section	AS-90620-15D
5		Control Box Cover	AE-90713-05
6		Control Mounting Panel	AE-90712-05
7a		Low Voltage Shield - Control Box (Upper Right)	AE-90742-07
7b		Low Voltage Shield - Control Box (Lower Left)	AE-90742-06
7c		Thermostat Chase Cover	AE-102722-01
8		Control Box Back	AS-90601-05
9		Mounting Bracket	AE-90779-02
10		Electric Heat Blockoff Plate Assembly (models with no heat)	AS-90720-03
11		Terminal Block - Heat Compartment	See Electrical Group
12		Electric Heat Access Panel Assembly - w/Hinges, Latch, Gasket, Insulation	AS-102872-06D
13		Power Entry Plate Assembly	AS-90774-13D
14		Blower Access Panel Assembly - w/Hinges, Latch, Gasket, Insulation	AS-102872-02D
15		Ground Lug - Heat Compartment	45-19000-02
16		Mounting Frame - Heat Exchanger Frame	AS-90754-04
17		Condenser Coil Access Panel-Front	AS-90734-20D
38c		Post - Outdoor Coil (Front)	See Coil Group
39c		Post - Outdoor Coil (Rear)	See Coil Group

No.	Notes	MODEL UNIT SIZE VINTAGE/HEAT DESIGNATION	MPS H2O BY
PANELS - REAR, LEFT, AND TOP			
REAR:			
22		Condenser Coil Access Panel-Rear	AS-90734-21D
23		Rear Panel - Right	AS-90618-08D
24		Supply Cover	AS-90628-03D
25		Return Cover	AS-90628-04D
LEFT:			
26		Upper Left Panel	AS-90624-09D
27		Lower Left Panel	AS-90624-08D
28		Left Corner Panel Assembly	AS-90755-05D
		Bracket - Left Corner Panel Assembly (2)	AE-90779-01
		Gasket for receptacle plate	68-42514-08
		Gasket for disconnect plate	68-42514-09
29		Plate - Install inside Panel-Receptacle	AS-90756-02D
30		Plate - Install inside Panel-Disconnect	AS-90756-03D
31		Button Plug (3)	45-42558-01
32		Star Bushing (3)	45-18515-01
TOP:			
33a		Top Panel Assembly - Right	AS-90616-04D
33b		Top Panel Assembly - Left	AS-90616-05D
34a		Top Panel - Front	AS-90633-10D
34b		Top Panel - Middle	AS-90633-11D
34c		Top Panel - Rear	AS-90633-09D
35		Venturi	AS-90632-03D (6)
36		Wire Grille	95-100906-09 (6)
43		Drain Pan - Removable	See Coil Group

No.	Notes	MODEL UNIT SIZE VINTAGE/HEAT DESIGNATION ELECTRICAL DESIGNATION	MPS H07 BY C	MPS H07 BY D
ELECTRIC GROUP				
11		Terminal Block	45-41669-01	45-41669-01
		Outlet Box	45-41952-02	45-41952-02
		Receptacle Cover	45-41953-02	45-41953-02
		Receptacle - Ground Fault	45-41954-01	45-41954-01
CONTROL BOX COMPONENTS:				
57	Stk	Transformer - Control	46-42515-04	46-42515-02
58a		Double Row Terminal Block	45-42548-02	45-42548-02
58b	Stk	Relay - Blower	42-21571-08	42-21571-08
58c		Ground Lug	45-19000-02	45-19000-02
		Pressure Switch Assembly - (Clogged Filter and Fan Proving)	42-103320-27	42-103320-27
		Comfort Alert (2)	42-101504-03	42-101504-03
		Low Ambient Control Assembly (2)	AS-103034-01	AS-103034-01
60		Capacitor - Fan Motor	See Fan Group	
		High Pressure Control	See Coil Group	
		Low Pressure Control	See Coil Group	
61b		Unit Controller (RTU-C)	47-102883-02	47-102883-02
61c		Variable Frequency Drive (VFD) - Drive Package R	47-104280-01	47-104285-01
61c		Variable Frequency Drive (VFD) - Drive Package S	47-104280-01	47-104285-01
61c		Variable Frequency Drive (VFD) - Drive Package T	47-104281-01	47-104286-01
62a	Stk	Contactora - Compressor	42-102664-08	42-102664-08
62b	Stk	Contactora - Compressor	42-102664-08	42-102664-08
WIRING HARNESES:				
		Wiring Harness - Motor #1	See Fan Group	
		Wiring Harness - Motor #2	See Fan Group	
		Wiring Harness - 8 Pin to (4 Connectors and 2 Temperature Sensors) - See Note 1	45-42522-98	45-42522-98
		Wiring Harness - Twist-Loc (12 Pin and 4 Pin) to 9 Pin	45-42522-100	45-42522-100
		Jumper - 7 Pin Connector	45-42522-104	45-42522-104
		Wiring Harness - 4 Pin to Variable Frequency Drive (VFD)	45-42522-120	45-42522-120
		Wiring Harness - Compressor Control (14 Pin to Four 2 Pin Connectors and Three Temperature Sensors) - See Note 1	45-42522-99	45-42522-99
		Plug Harness - Compressor	See Compressor Group	
		Wirng Harness - Main Power	45-42522-09	45-42522-09
		Bypass Plug - Economizer 12 Pin	AS-61997-55	AS-61997-55
		Wiring Harness - 6 Pin to Heater Kit	45-102706-09	45-102706-09

No.	Notes	MODEL UNIT SIZE VINTAGE/HEAT DESIGNATION ELECTRICAL DESIGNATION	MPS H10 BY C	MPS H10 BY D
ELECTRIC GROUP				
11		Terminal Block	45-41669-01	45-41669-01
		Outlet Box	45-41952-02	45-41952-02
		Receptacle Cover	45-41953-02	45-41953-02
		Receptacle - Ground Fault	45-41954-01	45-41954-01
CONTROL BOX COMPONENTS:				
57	Stk	Transformer - Control	46-42515-04	46-42515-05
58a		Double Row Terminal Block	45-42548-02	45-42548-02
58b	Stk	Relay - Blower	42-21571-08	42-21571-08
58c		Ground Lug	45-19000-02	45-19000-02
		Pressure Switch Assembly - (Clogged Filter and Fan Proving)	42-103320-27	42-103320-27
		Comfort Alert (2)	42-101504-03	42-101504-03
		Low Ambient Control Assembly (2)	AS-103034-01	AS-103034-01
60		Capacitor - Fan Motor	See Fan Group	
		High Pressure Control	See Coil Group	
		Low Pressure Control	See Coil Group	
61b		Unit Controller (RTU-C)	47-102883-02	47-102883-02
61c		Variable Frequency Drive (VFD) - Drive Package R	47-104280-01	47-104285-01
61c		Variable Frequency Drive (VFD) - Drive Package S	47-104281-01	47-104286-01
62a	Stk	Contactora - Compressor	42-102664-08	42-102664-08
62b	Stk	Contactora - Compressor	42-102664-08	42-102664-08
WIRING HARNESSES:				
		Wiring Harness - Motor #1	See Fan Group	
		Wiring Harness - Motor #2	See Fan Group	
		Wiring Harness - 8 Pin to (4 Connectors and 2 Temperature Sensors) - See Note 1	45-42522-98	45-42522-98
		Wiring Harness - Twist-Loc (12 Pin and 4 Pin) to 9 Pin	45-42522-100	45-42522-100
		Jumper - 7 Pin Connector	45-42522-104	45-42522-104
		Wiring Harness - 4 Pin to Variable Frequency Drive (VFD)	45-42522-120	45-42522-120
		Wiring Harness - Compressor Control (14 Pin to Four 2 Pin Connectors and Three Temperature Sensors) - See Note 1	45-42522-99	45-42522-99
		Plug Harness - Compressor	See Compressor Group	
		Wirng Harness - Main Power	45-42522-09	45-42522-09
		Bypass Plug - Economizer 12 Pin	AS-61997-55	AS-61997-55
		Wiring Harness - 6 Pin to Heater Kit	45-102706-09	45-102706-09

No.	Notes	MODEL UNIT SIZE VINTAGE/HEAT DESIGNATION ELECTRICAL DESIGNATION	MPS H15 BY C	MPS H15 BY D
ELECTRIC GROUP				
11		Terminal Block - Heater Compartment	45-21134-04	45-21134-04
15		Ground Lug - Heater Compartment	45-19000-02	45-19000-02
		Outlet Box	45-41952-02	45-41952-02
		Receptacle Cover	45-41953-02	45-41953-02
		Receptacle - Ground Fault	45-41954-01	45-41954-01
CONTROL BOX COMPONENTS:				
57a	Stk	Transformer - Control	46-42515-04	46-42515-05
58a		Terminal Block - Double Row	45-42548-02	45-42548-02
58b		Terminal Block - Power Block	45-41765-01	45-41765-01
58c		Ground Lug	45-19000-02	45-19000-02
59	Stk	Blower Relay	42-21571-08	42-21571-08
		Pressure Switch Assembly - (Clogged Filter and Fan Proving)	42-103320-27	42-103320-27
		Low Ambient Control Assembly (2)	AS-103034-01	AS-103034-01
60		Run Capacitor		See Fan Group
		High Pressure Control		See Coil Group
		Low Pressure Control		See Coil Group
61b		Unit Controller (RTU-C)	47-102883-02	47-102883-02
61c		Variable Frequency Drive (VFD) - Drive Package R	47-104281-01	47-104286-01
61c		Variable Frequency Drive (VFD) - Drive Package S	47-104282-01	47-104287-01
62a	Stk	Compressor Contactor #2	42-102664-12	42-102664-12
62b	Stk	Compressor Contactor #1	42-102664-12	42-102664-12
62c		Comfort Alert (2)	42-101504-03	42-101504-03
WIRING HARNESES:				
		Wiring Harness - Fan Motor		See Fan Group
		Plug Harness - Compressor		See Compressor Group
		Bypass Plug - Economizer 12 Pin	AS-61997-55	AS-61997-55
		Wiring Harness - Twist-Loc, Economizer (12 Pin and 4 Pin to 9 Pin)	45-42522-93	45-42522-93
		Wiring Harness - Compressor Control (14 Pin to Four 2 Pin Connectors and Three Temperature Sensors) - See Note 1	45-42522-78	45-42522-78
		Wiring Harness - Heater Control	45-42522-91	45-42522-91
		Wiring Harness - Main Power	45-42522-92	45-42522-92
		Wiring Harness - 8 Pin to 4 Connectors and 2 Temperature Sensors - See Note 1	45-42522-98	45-42522-98

No.	Notes	MODEL UNIT SIZE VINTAGE/HEAT DESIGNATION ELECTRICAL DESIGNATION	MPS H2O BY C	MPS H2O BY D
ELECTRIC GROUP				
11		Terminal Block - Heater Compartment	45-21134-04	45-21134-04
15		Ground Lug - Heater Compartment	45-19000-02	45-19000-02
		Outlet Box	45-41952-02	45-41952-02
		Receptacle Cover	45-41953-02	45-41953-02
		Receptacle - Ground Fault	45-41954-01	45-41954-01
CONTROL BOX COMPONENTS:				
57a	Stk	Transformer - Control	46-42515-04	46-42515-05
58a		Terminal Block - Double Row	45-42548-02	45-42548-02
58b		Terminal Block - Power Block	45-41765-01	45-41765-01
58c		Ground Lug	45-19000-02	45-19000-02
59	Stk	Blower Relay	42-21571-08	42-21571-08
		Pressure Switch Assembly - (Clogged Filter and Fan Proving)	42-103320-27	42-103320-27
		Low Ambient Control Assembly (2)	AS-103034-01	AS-103034-01
60		Run Capacitor		See Fan Group
		High Pressure Control		See Coil Group
		Low Pressure Control		See Coil Group
61b		Unit Controller (RTU-C)	47-102883-02	47-102883-02
61c		Variable Frequency Drive (VFD) - Drive Package R	47-104282-01	47-104287-01
61c		Variable Frequency Drive (VFD) - Drive Package S	47-104283-01	47-104288-01
62a	Stk	Compressor Contactor #2	42-102664-12	42-102664-12
62b	Stk	Compressor Contactor #1	42-102664-26	42-102664-26
62c		Comfort Alert (2)	42-101504-03	42-101504-03
WIRING HARNESES:				
		Wiring Harness - Fan Motor		See Fan Group
		Plug Harness - Compressor		See Compressor Group
		Wirng Harness - Main Power	45-42522-92	45-42522-92
		Bypass Plug - Economizer 12 Pin	AS-61997-55	AS-61997-55
		Wiring Harness - 6 Pin to Heater Kit	45-42522-91	45-42522-91
		Wiring Harness - Economizer (12 pin and 4 pin to 9 pin)	45-42522-93	45-42522-93
		Wire Harness Assembly - Compressor Control (14 pin to 3 Temperature Sensors and 4 Connectors) - See Note 1	45-42522-78	45-42522-78
		Wiring Harness - 8 Pin to 4 Connectors and 2 Temperature Sensors - See Note 1	45-42522-98	45-42522-98

No.	Notes	MODEL UNIT SIZE VINTAGE/HEAT DESIGNATION ELECTRICAL DESIGNATION	MPS H07 BY C	MPS H07 BY D
FAN GROUP				
52	Stk	Fan Motor (2)	51-42534-24	51-42534-25
		Wiring Harness - Motor #1 (9 wire)	45-102706-21	45-102706-21
		Wiring Harness - Motor #2 (7 wire)	45-102706-22	45-102706-22
		Wiring Harness - 6 Pin to Heater Kit	45-102706-09	45-102706-09
53	Stk	Fan Blade (2)	70-42572-04	70-42572-04
60	Stk	Capacitor - Fan Motor (2)	43-100496-12	43-100496-12

No.	Notes	MODEL UNIT SIZE VINTAGE/HEAT DESIGNATION ELECTRICAL DESIGNATION	MPS H10 BY C	MPS H10 BY D
FAN GROUP				
52	Stk	Fan Motor (2)	51-42534-24	51-42534-25
		Wiring Harness - Motor #1 (9 wire)	45-102706-21	45-102706-21
		Wiring Harness - Motor #2 (7 wire)	45-102706-22	45-102706-22
		Wiring Harness - 6 Pin to Heater Kit	45-102706-09	45-102706-09
53	Stk	Fan Blade (2)	70-42572-04	70-42572-04
60	Stk	Capacitor - Fan Motor (2)	43-100496-12	43-100496-12

No.	Notes	MODEL UNIT SIZE VINTAGE/HEAT DESIGNATION ELECTRICAL DESIGNATION	MPS H15 BY C	MPS H15 BY D
FAN GROUP				
52	Stk	Fan Motor (3)	51-42534-24	51-42534-25
		Wiring Harness - Motor #1, #2	45-42522-71	45-42522-71
		Wiring Harness - Motor #3	45-42522-114	45-42522-114
53	Stk	Fan Blade (3)	70-42572-04	70-42572-04
60	Stk	Capacitor - Fan Motor (3)	43-100496-12	43-100496-12

No.	Notes	MODEL UNIT SIZE VINTAGE/HEAT DESIGNATION ELECTRICAL DESIGNATION	MPS H20 BY C	MPS H20 BY D
FAN GROUP				
52	Stk	Fan Motor (6)	51-42534-24	51-42534-25
		Wiring Harness - Motor #1 & #4	45-42522-71	45-42522-71
		Wiring Harness - Motor #2 & #5	45-42522-70	45-42522-70
		Wiring Harness - Motor #3 & #6	45-42522-69	45-42522-69
53	Stk	Fan Blade (6)	70-42572-04	70-42572-04
60	Stk	Capacitor - Fan Motor (6)	43-100496-12	43-100496-12

No.	Notes	MODEL UNIT SIZE VINTAGE/HEAT DESIGNATION DRIVE PACKAGE	MPS H07 BY R	MPS H07 BY S	MPS H07 BY T
BLOWER ASSEMBLY GROUP - BELT DRIVE					
64	Stk	Blower Assembly (Includes Items 65-68)	AS-90757-01	AS-90757-01	AS-90757-01
65	Stk	Blower Wheel	70-42540-02	70-42540-02	70-42540-02
66		Bearing Frame Tri-Arm (2)	70-42540-05	70-42540-05	70-42540-05
67		Bearing with Bearing Lock (2)	70-41854-02	70-41854-02	70-41854-02
68	Stk	Blower Shaft	70-42540-04	70-42540-04	70-42540-04
69		Blower Mounting Angles (2)	AE-90708-01	AE-90708-01	AE-90708-01
		Blower Angle Stop	AE-90709-02	AE-90709-02	AE-90709-02
70		Motor Mount	AE-90710-04	AE-90710-04	AE-90710-04
71	Stk	Blower Motor (C/D Voltages)	51-102826-14	51-102826-14	51-102826-15
72	Stk	Variable Sheave	71-42538-02	71-42538-02	71-42538-02
73	Stk	Belt	71-40438-30	71-40438-27	71-40438-23
74	Stk	Fixed Sheave	71-100774-05	71-100774-02	71-100774-04
		Key	94-42551-09	94-42551-09	94-42551-09
	Stk	Bushing for Sheave w/Screws	71-100773-01	71-100773-01	71-100773-01

No.	Notes	MODEL UNIT SIZE VINTAGE/HEAT DESIGNATION DRIVE PACKAGE	MPS H10 BY R	MPS H10 BY S	
BLOWER ASSEMBLY GROUP - BELT DRIVE					
64	Stk	Blower Assembly (Includes Items 65-68)	AS-90757-01	AS-90757-01	
65	Stk	Blower Wheel	70-42540-02	70-42540-02	
66		Bearing Frame Tri-Arm (2)	70-42540-05	70-42540-05	
67		Bearing with Bearing Lock (2)	70-41854-02	70-41854-02	
68	Stk	Blower Shaft	70-42540-04	70-42540-04	
69		Blower Mounting Angles (2)	AE-90708-01	AE-90708-01	
		Blower Angle Stop	AE-90709-02	AE-90709-02	
70		Motor Mount	AE-90710-04	AE-90710-04	
71	Stk	Blower Motor (C/D Voltages)	51-102826-14	51-102826-15	
72	Stk	Variable Sheave	71-42538-02	71-42538-02	
73	Stk	Belt	71-40438-27	71-40438-23	
74	Stk	Fixed Sheave	71-100774-02	71-100774-04	
		Key	94-42551-09	94-42551-09	
	Stk	Bushing for Sheave w/Screws	71-100773-01	71-100773-01	

No.	Notes	MODEL UNIT SIZE VINTAGE/HEAT DESIGNATION DRIVE PACKAGE	MPS H15 BY R	MPS H20 BY R
BLOWER ASSEMBLY GROUP - BELT DRIVE				
64	Stk	Blower Assembly - Includes Items 65 and 66	AS-90757-06	AS-90757-06
65	Stk	Blower Wheel (2)	70-42564-02	70-42564-02
66		Bearing Frame Tri-Arm (4)	70-42284-04	70-42284-04
67		Bearing with Bearing Lock (4)	70-41854-02	70-41854-02
68	Stk	Blower Shaft	70-42564-03	70-42564-03
69		Blower Connector Angles (3)	AE-90798-01	AE-90798-01
70		Motor Mount	AE-90710-03	AE-90710-03
71	Stk	Blower Motor - C/D Voltages	51-102826-15	51-102826-06
72	Stk	Variable Sheave	71-42538-02	71-40427-04
73	Stk	Belt	71-40438-43	71-40438-50
74a	Stk	Fixed Sheave	71-100774-08	71-100774-07
74b		Key	94-42551-09	94-42551-09
74c	Stk	Bushing for Sheave w/Screws	71-100773-01	71-100773-01

No.	Notes	MODEL UNIT SIZE VINTAGE/HEAT DESIGNATION DRIVE PACKAGE	MPS H15 BY S	MPS H20 BY S
BLOWER ASSEMBLY GROUP - BELT DRIVE				
64	Stk	Blower Assembly - Includes Items 65 and 66	AS-90757-06	AS-90757-06
65	Stk	Blower Wheel (2)	70-42564-02	70-42564-02
66		Bearing Frame Tri-Arm (4)	70-42284-04	70-42284-04
67		Bearing with Bearing Lock (4)	70-41854-02	70-41854-02
68	Stk	Blower Shaft	70-42564-03	70-42564-03
69		Blower Connector Angles (3)	AE-90798-01	AE-90798-01
70		Motor Mount	AE-90710-03	AE-90710-03
71	Stk	Blower Motor - C/D Voltages	51-102826-06	51-102826-07
72	Stk	Variable Sheave	71-40427-04	71-40427-59
73	Stk	Belt	71-40438-46	71-40438-54
74a	Stk	Fixed Sheave	71-100774-08	71-100774-06
74b		Key	94-42551-09	94-42551-09
74c	Stk	Bushing for Sheave w/Screws	71-100773-01	71-100773-01

No.	Notes	MODEL UNIT SIZE VINTAGE/HEAT DESIGNATION	MPS H07 BY	MPS H10 BY
COIL GROUP				
EVAPORATOR COIL:				
42	Stk	Evaporator Coil	AS-90656-86	AS-90656-87
		TXV - Circuit #1	61-101351-16	61-103999-01
		TXV - Circuit #2	61-101351-16	61-103999-01
		Bulb Strap Kit - TXV (2)	64-101357-01	N/A
43	Stk	Drain Pan - Removable	68-102699-02	68-102699-02
FILTER PIECES:				
44		Filter Frame	AE-90606-11	AE-90606-11
45		Air Stop - Bottom	AE-102712-10	AE-102712-10
46		Air Stop - Side	AE-102712-06	AE-102712-06
47		Top Air Stop Assy	AS-90604-06	AS-90604-06
48		Filter Channel (2)	AE-102712-08	AE-102712-08
49		Filter Slide (2)	AE-102712-11	AE-102712-11
50		Filter (6)	54-42541-01	54-42541-01
CONDENSER COIL:				
37a	Stk	Condenser Coil	65-101478-07	65-101478-08
37b	Stk	Condenser Coil	65-101478-07	65-101478-08
38		Front Air Stop	N/A	N/A
39		Rear Air Stop	N/A	N/A
40a,b		Bottom Retainer (2)	N/A	N/A
40a		Micro-Channel Coil Mounting Base - Left	68-102752-01	N/A
40b		Micro-Channel Coil Mounting Base - Right	68-102752-02	N/A
41a		Top Support - Condenser Coil	AE-90612-13	AE-90612-02
41b		Top Support - Condenser Bulkhead	AE-90612-05	AE-90612-03
		Low Ambient Assembly	See Electrical Group	
		Liquid Line Filter Drier	83-22755-05 (2)	83-22755-05 (2)
		Strap - Filter Drier	AE-102132-01 (2)	AE-102132-01 (2)
		High Pressure Control	See Compressor Group	
		Low Pressure Control	See Compressor Group	

No.	Notes	MODEL UNIT SIZE VINTAGE/HEAT DESIGNATION	MPS H15 BY
COIL GROUP			
EVAPORATOR COIL GROUP:			
40		Air Flow Panel	AS-90828-02D
42	Stk	Complete Coil - Indoor	AS-102821-04
	Stk	TXV/Distributor Assembly - Circuit #1	61-102845-01
	Stk	TXV/Distributor Assembly - Circuit #2	61-102845-01
43	Stk	Drain Pan - Removable	68-102699-01
FILTER PIECES:			
44		Filter Frame	AE-90606-10
45		Air Stop - Bottom	AE-102712-17
46		Air Stop - Side	AE-102712-14
47		Top Air Stop Assembly	AS-90604-04
48		Filter Channel (2)	AE-102712-16
49		Filter Slide (2)	AE-102712-15
50		Filter - 20 in. x 25 in. x 2 in. (8)	54-42541-04
CONDENSER COIL:			
37	Stk	Condenser Coil (2)	65-101478-09
37a		Coil Mounting Base - Left	68-102752-01
37b		Coil Mounting Base - Right	68-102752-02
38		Post - Outdoor Coil (Front)	AS-90701-08D
38a		Air Stop - Front	AE-90706-21
39		Post - Outdoor Coil (Rear)	AS-90702-06D
39a		Air Stop - Rear	AE-90706-20
41a		Top Support - Inner Condenser Coil (2)	AE-90612-25
41b		Top Support - Condenser Bulkhead	AE-90612-24
		Filter Drier - Liquid Line (2)	83-22755-13
	Stk	High Pressure Control (2)	47-23699-04
	Stk	Low Pressure Control (2)	47-101529-09

No.	Notes	MODEL UNIT SIZE VINTAGE/HEAT DESIGNATION	MPS H2O BY
COIL GROUP			
EVAPORATOR COIL GROUP:			
40		Air Flow Panel	AS-90828-02D
42	Stk	Complete Coil - Indoor	AS-104258-03
	Stk	TXV/Distributor Assembly - Circuit #1	61-102815-01
	Stk	TXV/Distributor Assembly - Circuit #2	61-102815-01
43	Stk	Drain Pan - Removable	68-102699-01
FILTER PIECES:			
44		Filter Frame	AE-90606-10
45		Air Stop - Bottom	AE-102712-17
46		Air Stop - Side	AE-102712-14
47		Top Air Stop Assembly	AS-90604-04
48		Filter Channel (2)	AE-102712-16
49		Filter Slide (2)	AE-102712-15
50		Filter - 20 in. x 25 in. x 2 in. (8)	54-42541-04
CONDENSER COIL:			
37	Stk	Condenser Coil Assembly (2)	65-101478-09
38a		Air Stop - Front	AE-90706-25
38b		Corner Brace - Top Front	AS-90706-16D
38c		Post - Outdoor Coil (Front)	AS-90706-22D
39a		Air Stop - Rear	AE-90706-24
39b		Corner Brace - Top Rear	AS-90706-17D
39c		Post - Outdoor Coil (Rear)	AS-90706-23D
41		Air Stop- Top Right	AS-90753-08D
41a		Top Support - Inner Condenser Coil (2)	AE-90612-28
41b		Top Support - Outer Condenser Coil	AE-90612-20
41c		Top Support - Condenser Bulkhead	AE-90612-27
		Filter Drier - Liquid Line (2)	83-22755-11
	Stk	High Pressure Control (2)	47-23699-04
	Stk	Low Pressure Control (2)	47-101529-09

No.	Notes	MODEL UNIT SIZE VINTAGE/HEAT DESIGNATION ELECTRICAL DESIGNATION	MPS H07 BY C	MPS H07 BY D
COMPRESSOR GROUP				
		Compressor ID:	8652	8653
75	Stk	Compressor (2)	55-102045-21S	55-102045-20S
	Stk	Plug Harness - Compressor (2)	45-102708-02	45-102708-02
	Stk	High Pressure Control (2)	47-103669-01	47-103669-01
	Stk	Low Pressure Control (2)	47-101529-09	47-101529-09

No.	Notes	MODEL UNIT SIZE VINTAGE/HEAT DESIGNATION ELECTRICAL DESIGNATION	MPS H10 BY C	MPS H10 BY D
COMPRESSOR GROUP				
		Compressor ID:	8658	8659
75	Stk	Compressor (2)	55-102045-83S	55-102045-84S
	Stk	Plug Harness - Compressor (2)	45-102708-02	45-102708-02
	Stk	High Pressure Control (2)	47-103669-01	47-103669-01
	Stk	Low Pressure Control (2)	47-101529-09	47-101529-09

No.	Notes	MODEL UNIT SIZE VINTAGE/HEAT DESIGNATION ELECTRICAL DESIGNATION	MPS H15 BY C	MPS H20 BY C
COMPRESSOR GROUP				
Compressor:			8664	8670
75a	Stk	Compressor #1	55-23156-29S	55-102471-01S
75b	Stk	Compressor #2	55-23156-29S	55-102471-24S
	Stk	Plug Harness - Compressor #1	45-42522-73	45-42522-73
	Stk	Plug Harness - Compressor #2	45-42522-72	45-42522-72
		High Pressure Control	See Coil Group	
		Low Pressure Control	See Coil Group	

No.	Notes	MODEL UNIT SIZE VINTAGE/HEAT DESIGNATION ELECTRICAL DESIGNATION	MPS H15 BY D	MPS H20 BY D
COMPRESSOR GROUP				
Compressor:			8665	8671
75a	Stk	Compressor #1	55-23156-30S	55-102471-04S
75b	Stk	Compressor #2	55-23156-30S	55-102471-25S
	Stk	Plug Harness - Compressor #1	45-42522-73	45-42522-73
	Stk	Plug Harness - Compressor #2	45-42522-72	45-42522-72
		High Pressure Control	See Coil Group	
		Low Pressure Control	See Coil Group	

No.	Notes	MODEL UNIT SIZE VINTAGE/HEAT DESIGNATION ELECTRICAL DESIGNATION	MPS H07-H10 BY C	MPS H15-H20 BY D
ELECTRIC HEATER KITS				
		Electric Element Kits	RXJJ-CC10C	RXJJ-CC10D
		Electric Element Kits	RXJJ-CC15C	RXJJ-CC15D
		Electric Element Kits	RXJJ-CC20C	RXJJ-CC20D
		Electric Element Kits	RXJJ-CC30C	RXJJ-CC30D
		Electric Element Kits	RXJJ-CC40C	RXJJ-CC40D
		Electric Element Kits	RXJJ-CC50C	RXJJ-CC50D

No.	Notes	MODEL UNIT SIZE VINTAGE/HEAT DESIGNATION ELECTRICAL DESIGNATION	MPS H15-H20 BY C	MPS H15-H20 BY D
ELECTRIC HEATER KITS				
		Electric Element Kits	RXJJ-CE20C	RXJJ-CE20D
		Electric Element Kits	RXJJ-CE40C	RXJJ-CE40D
		Electric Element Kits	RXJJ-CE60C	RXJJ-CE60D
		Electric Element Kits	RXJJ-CE75C	RXJJ-CE75D

No.	Notes	MODEL UNIT SIZE VINTAGE/HEAT DESIGNATION	MPS H07-H10 BY
ACCESSORIES			
		Louver Panel Assembly - 7.5 Ton	MXRX-AAD02A
		Louver Panel Assembly - 10 Ton	MXRX-AAD03A
		Carbon Dioxide Sensor	RXXR-AR02
		Dual Enthalpy Kit	RXXR-AV03
		Manual Fresh Air (Left Panel Mounted)	MXRF-KDA1
		Motor Kit for AXRF-KDA1	RXXR-AW02
		Modulating Motor Kit w/position feedback for RXRF-KDA1	RXXR-AW04
		Manual Fresh Air (Return Panel)	MXRF-JDA1
		Motorized Fresh Air (Return Panel)	MXRF-JDB1
		Comfort Alert	RXXR-AZ01
	See Note	BACnet Communication Module	RXXR-AY01
	See Note	LonWorks Communication Module	RXXR-AY02
		Unwired Convenience Outlet	RXXR-AN01
		Low Ambient Control Kit (1 Per Compressor)	RXRZ-C02

No.	Notes	MODEL UNIT SIZE VINTAGE/HEAT DESIGNATION	MPS H07-H10 BY
ECONOMIZERS			
	See Note	Economizer - Single Enthalpy	MXRD-PJCM3
	See Note	Economizer - Single Enthalpy w/Smoke Detector	MXRD-SJCM3
	See Note	Horizontal Economizer - Single Enthalpy	MXRD-RJCM3

No.	Notes	MODEL UNIT SIZE VINTAGE/HEAT DESIGNATION	MPS H07-H10 BY
POWER EXHAUST			
		Power Exhaust	RXXR-BFF02C
		Power Exhaust	RXXR-BFF02D
		Power Exhaust	RXXR-BFF02Y

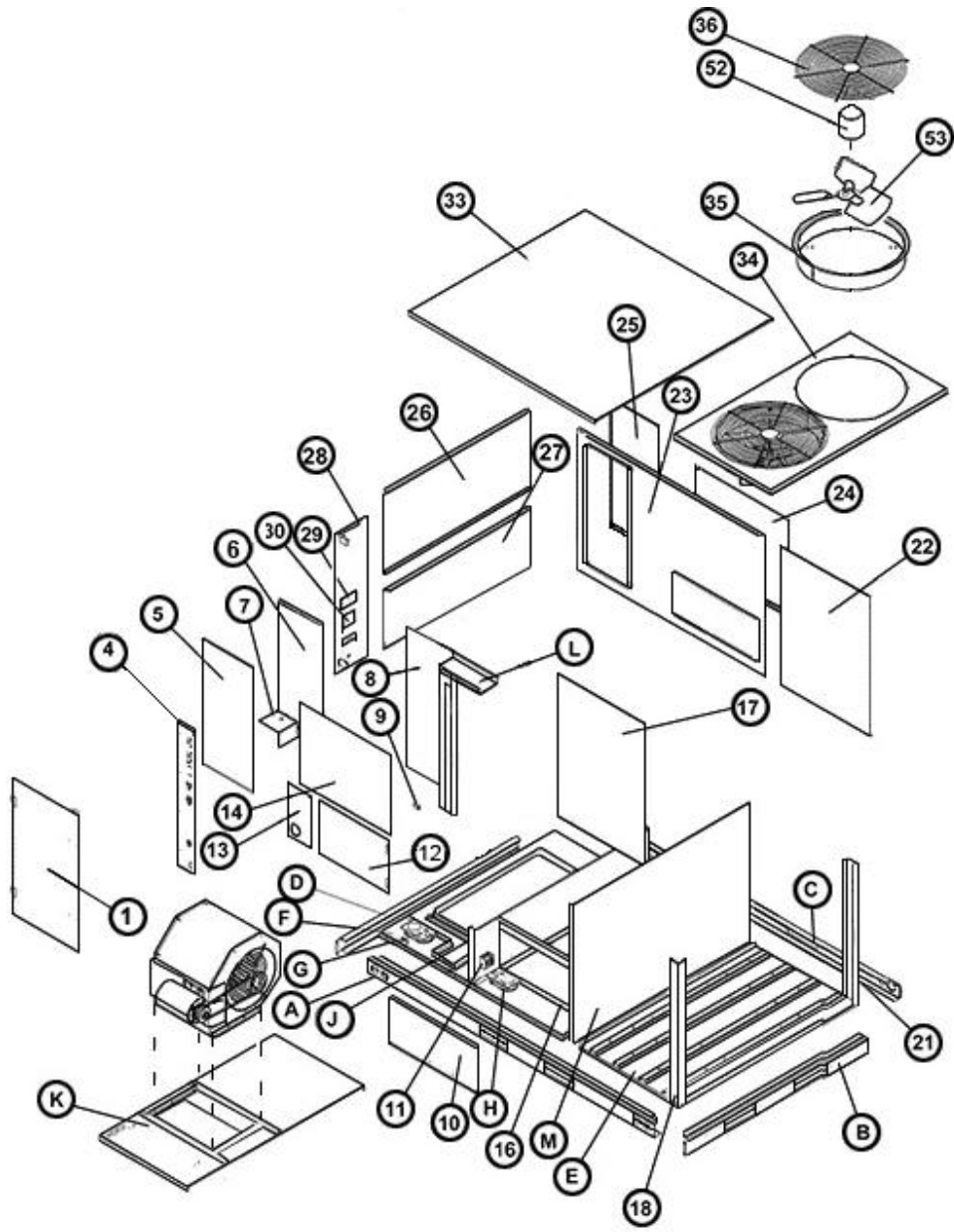
Note: For replacement parts for Economizer Assemblies and Communication Modules, refer to their individual parts lists.

No.	Notes	MODEL UNIT SIZE VINTAGE/HEAT DESIGNATION	MPS H15-H20 BY
ACCESSORIES			
		Carbon Dioxide Sensor (Wall Mount)	RXRX-AR02
		Dual Enthalpy Kit	RXRX-AV03
		Manual Fresh Air Damper	MXRF-KFA1
		Motorized Kit for AXRF-KFA1	RXRX-AW03
		Modulating Motor Kit (w/position feedback) for AXRF-KFA1	RXRX-AW05
	See Note	BACnet Communication Module	RXRX-AY01
	See Note	LonWorks Communication Module	RXRX-AY02
		Unwired Convenience Outlet	RXRX-AN01
		Comfort Alert (One per Compressor)	RXRX-AZ01
		Low Ambient Control Kit (One per Compressor)	RXRZ-C02

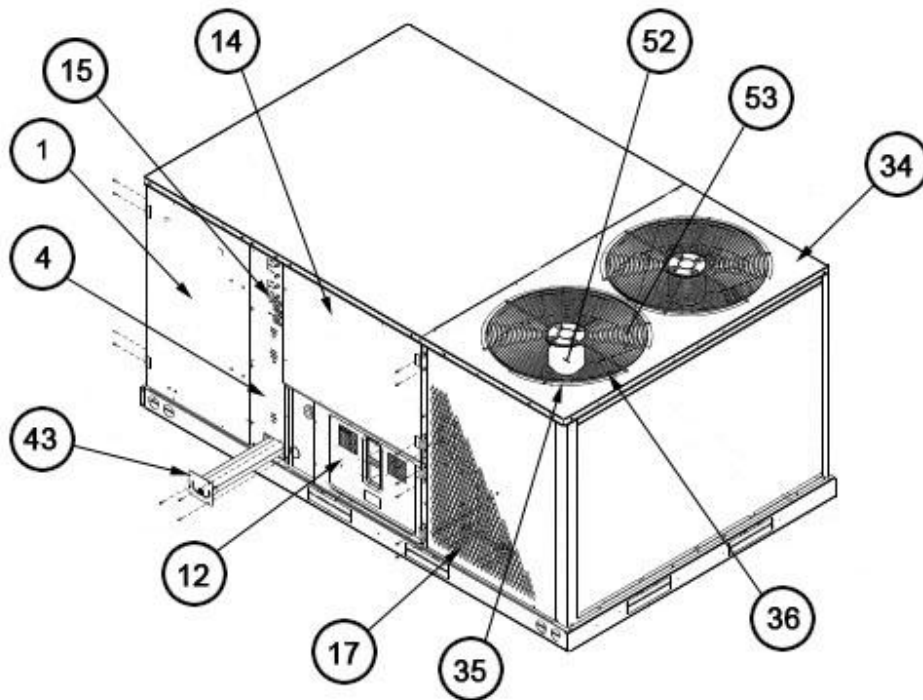
No.	Notes	MODEL UNIT SIZE VINTAGE/HEAT DESIGNATION	MPS H15-H20 BY
ECONOMIZERS			
	See Note	Downflow Economizer - Single Enthalpy	MXRD-PMCM3
	See Note	Downfloe Economizer - Single Enthalpy w/Smoke Detector	MXRD-SMCM3
	See Note	Horizontal Economizer - Single Enthalpy	MXRD-RMCM3

No.		MODEL UNIT SIZE VINTAGE/HEAT DESIGNATION	MPS H15-H20 BY
POWER EXHAUST			
		Power Exhaust (208/230V)	RXRX-BGF05C
		Power Exhaust (460V)	RXRX-BGF05D
		Power Exhaust (575V)	RXRX-BGF05Y

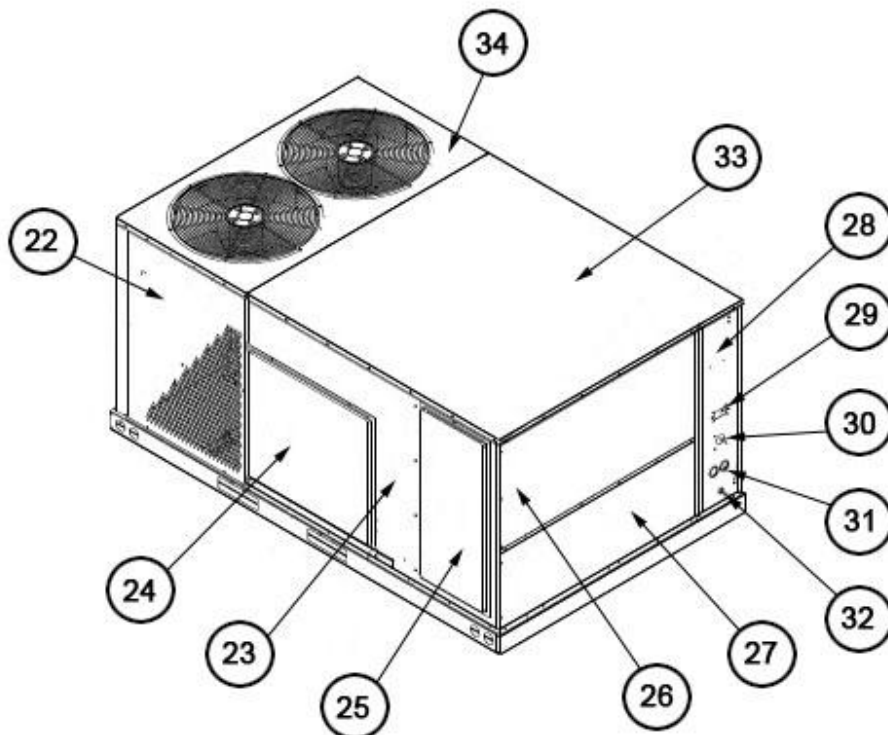
Note: For replacement parts for Economizer Assemblies and Communication Modules, refer to their individual parts lists.



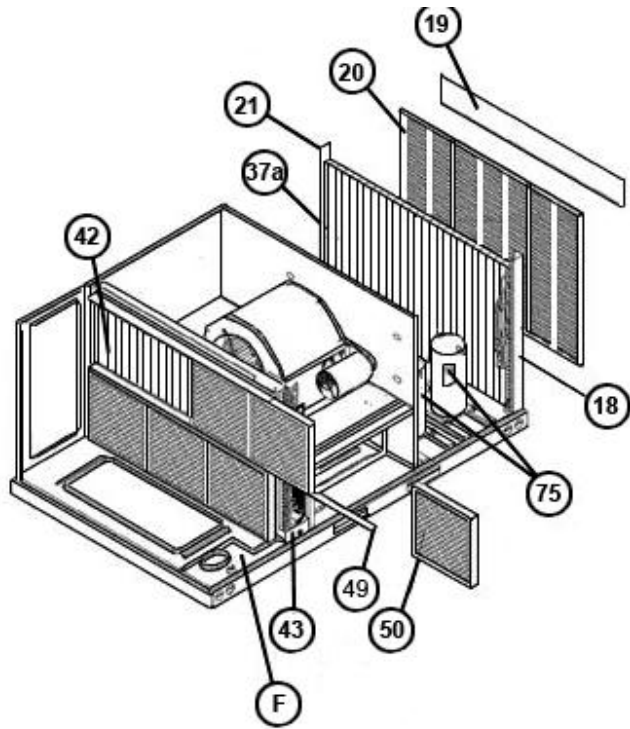
Exploded View H07-H10



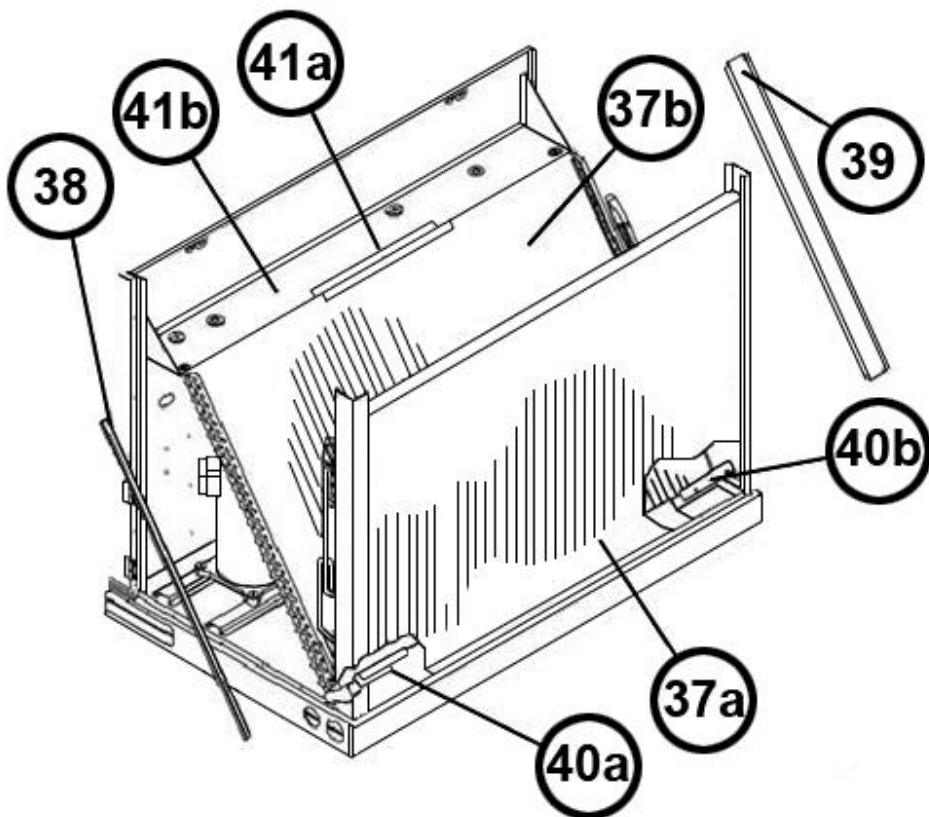
Exterior - Front H07-H10



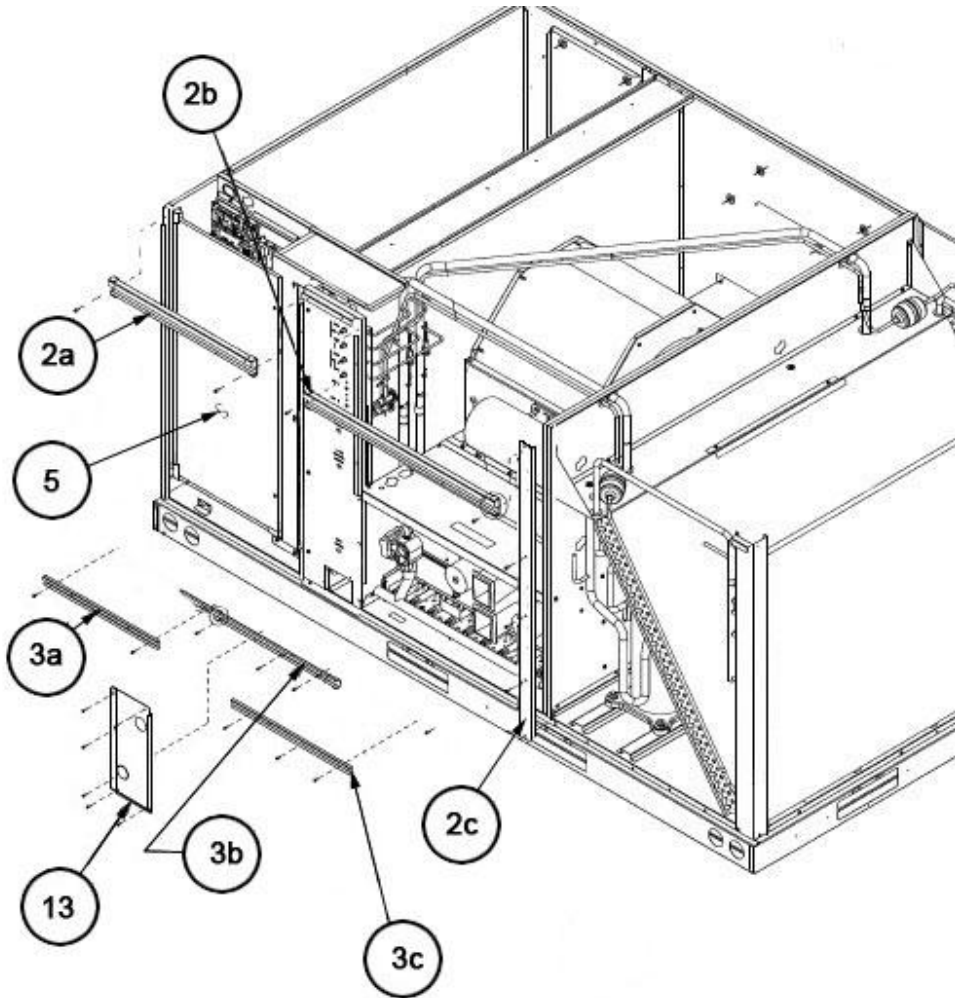
Exterior - Back H07-H10



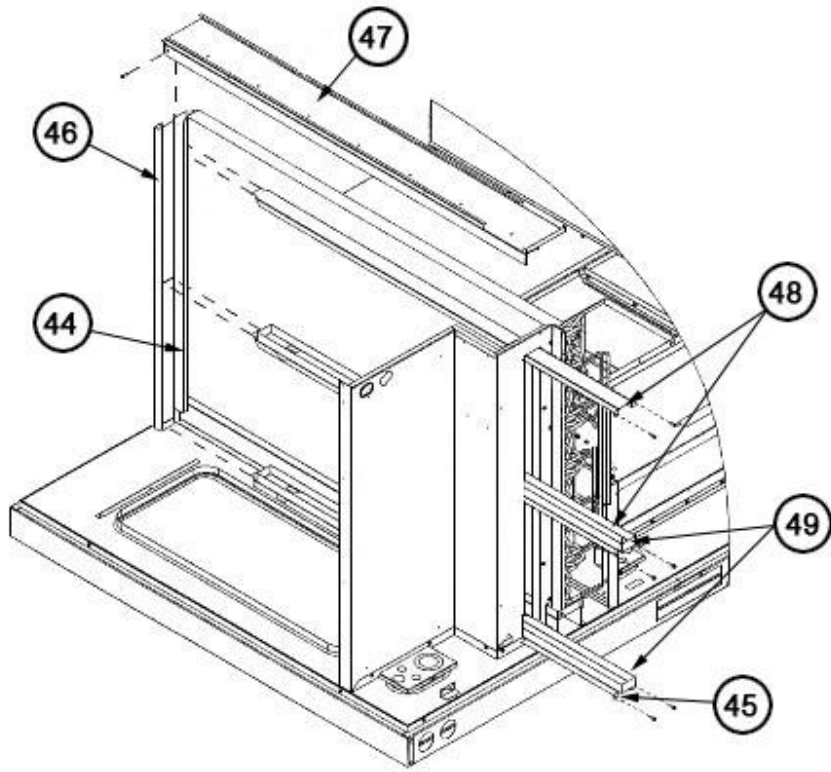
Filter-Coil Assembly H07-H10



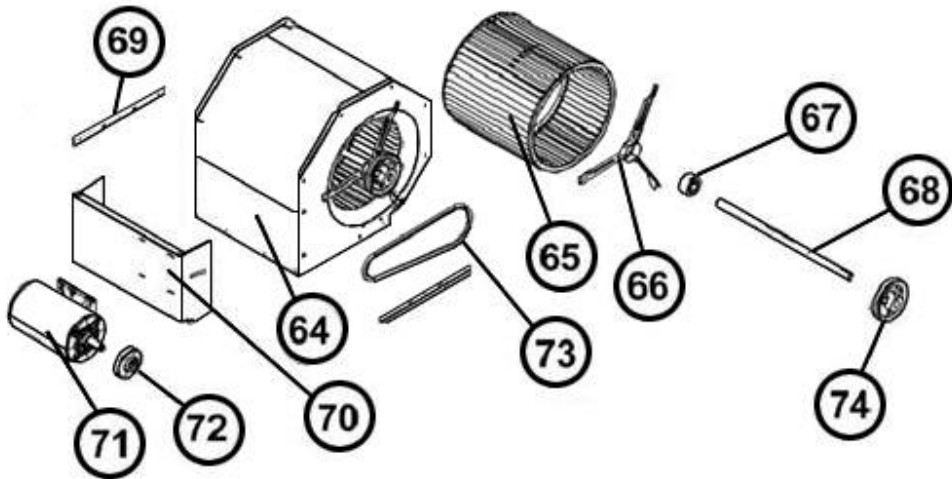
Condenser Coil Assembly H07-H10



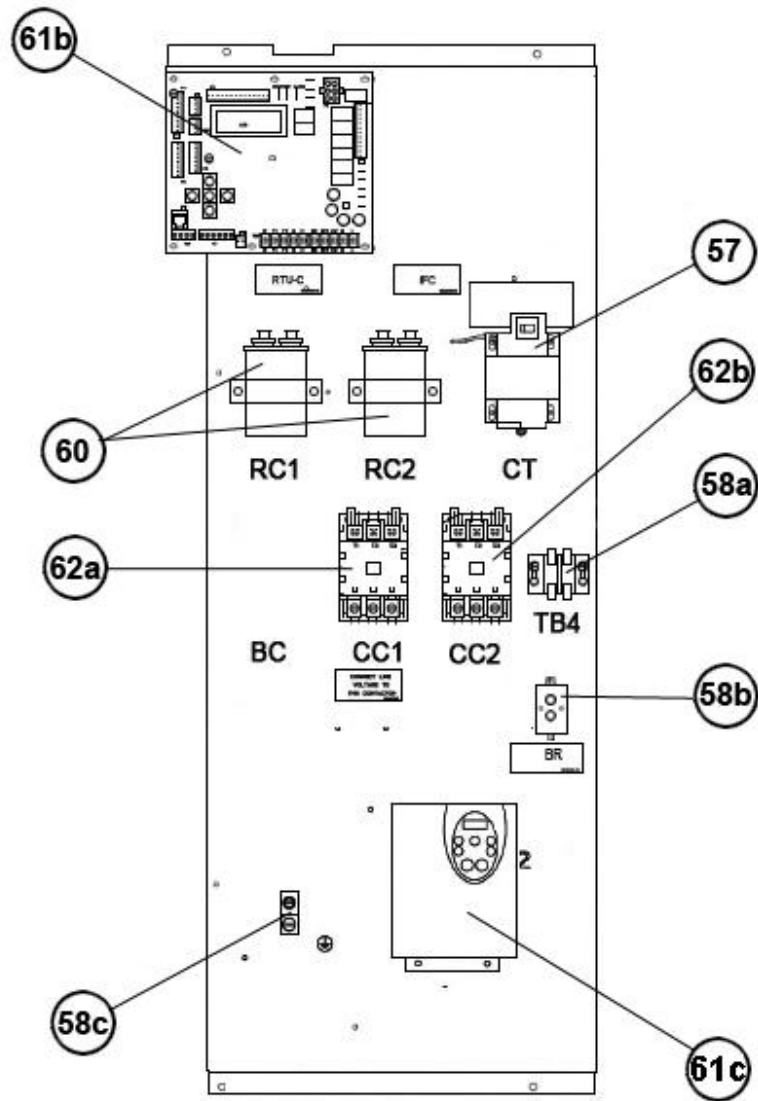
Front Panel Brackets H07-H10



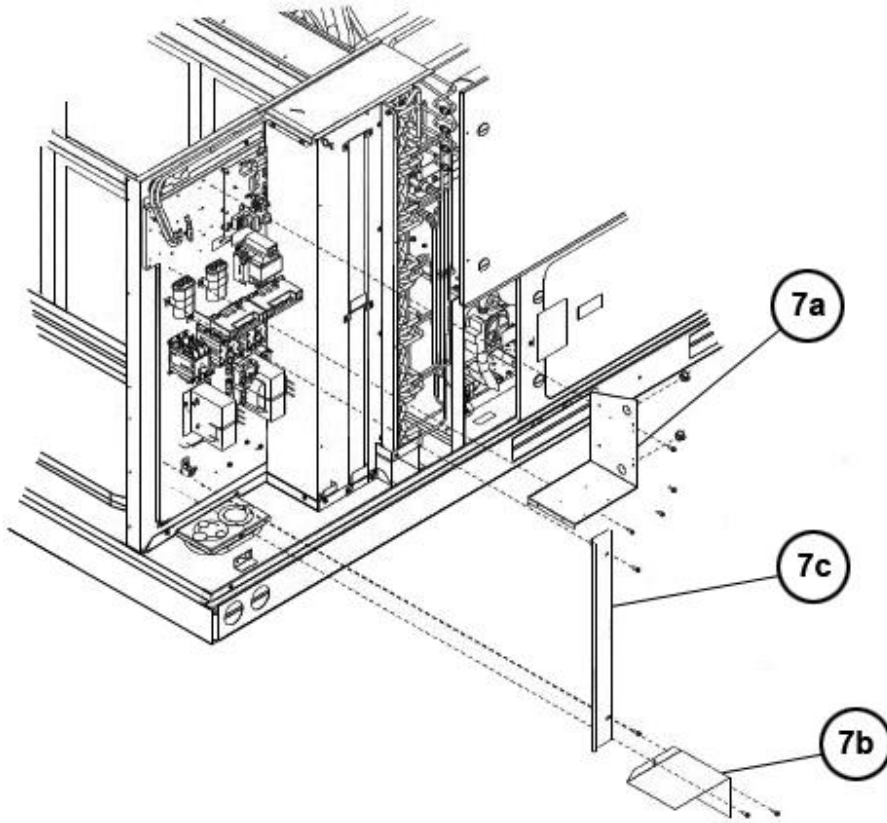
Filter Frame Assembly H07-H10



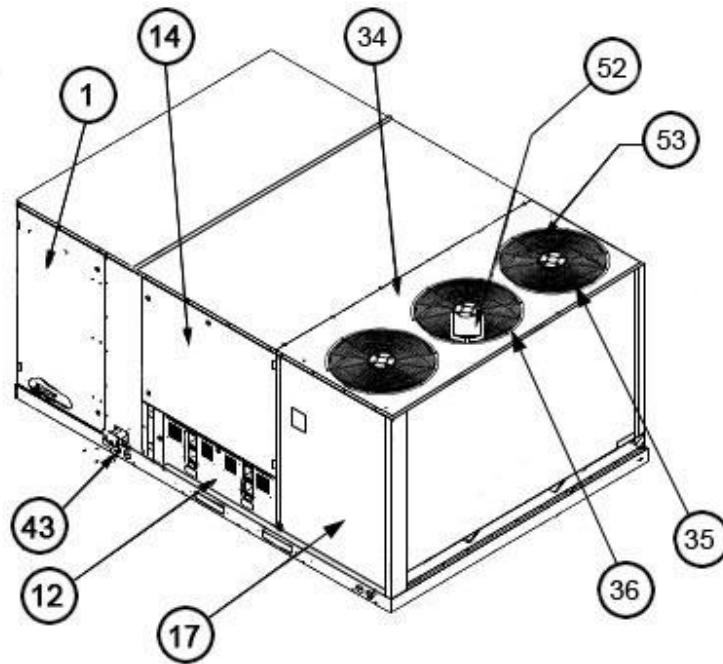
Blower Assembly H07-H10



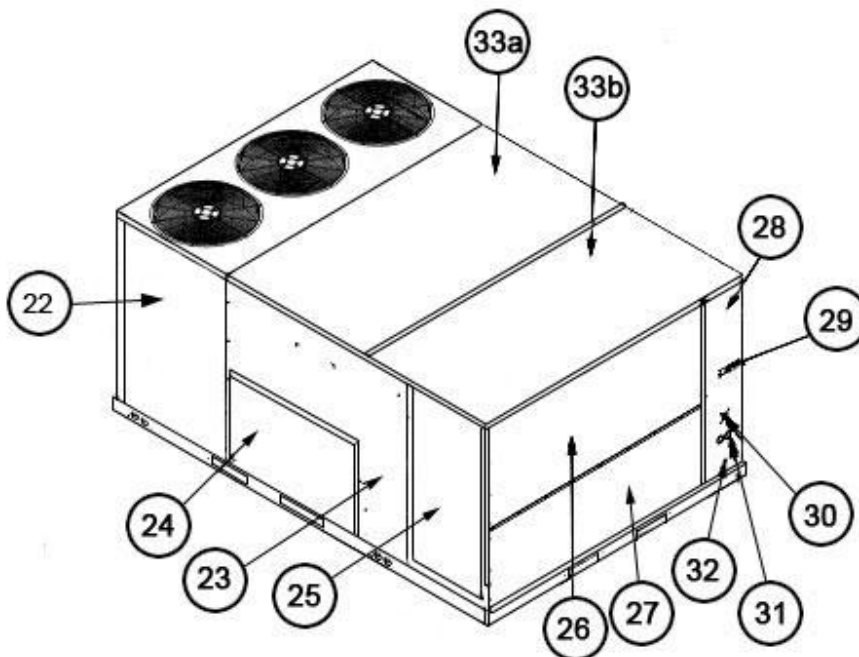
Control Box H07-H10



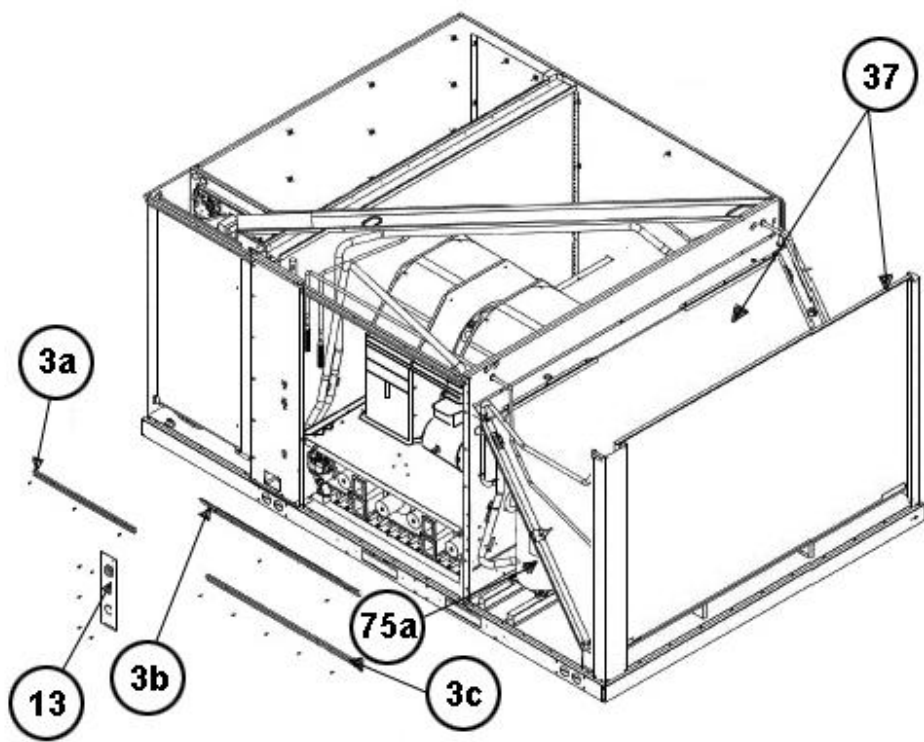
Low Voltage Shields H07-H10



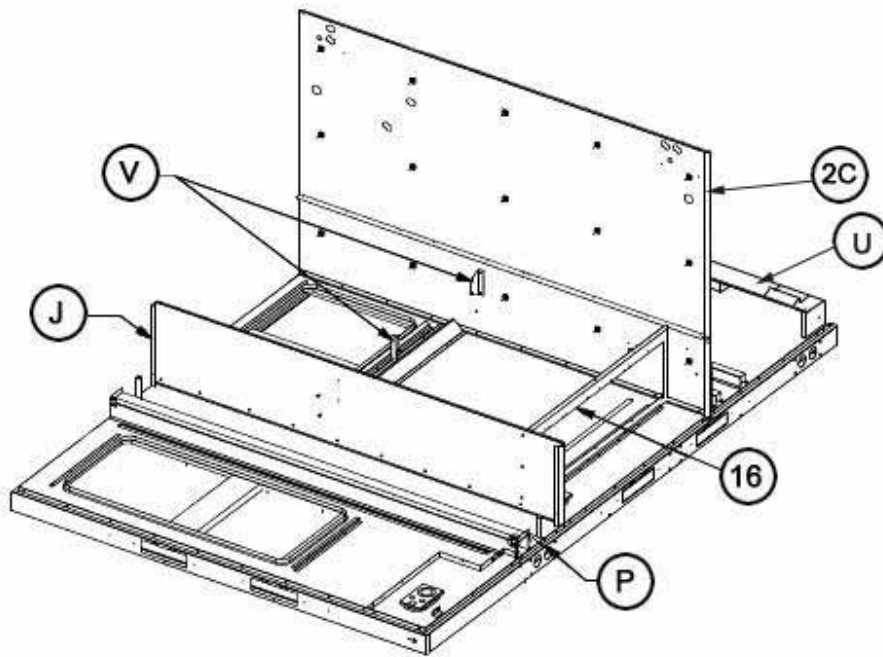
Exterior - Front H15



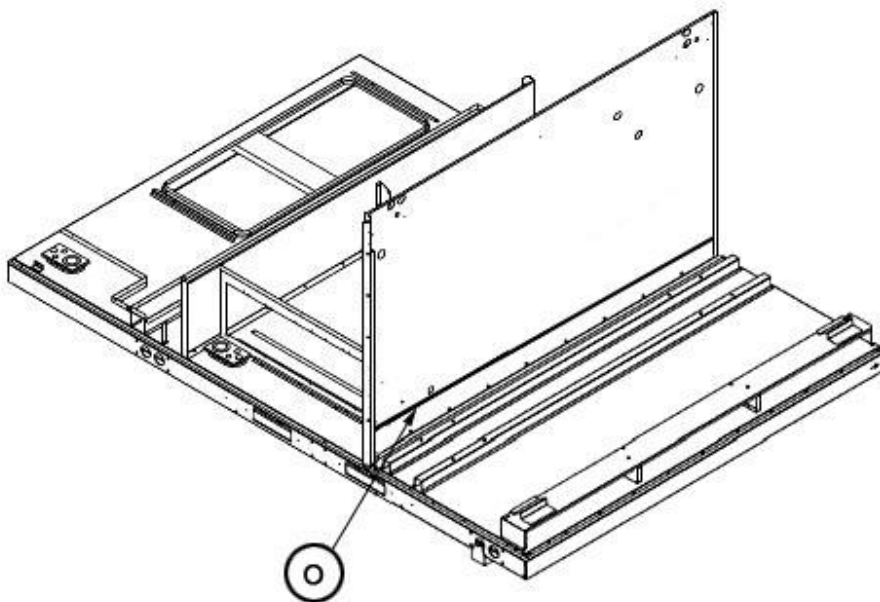
Exterior - Back H15



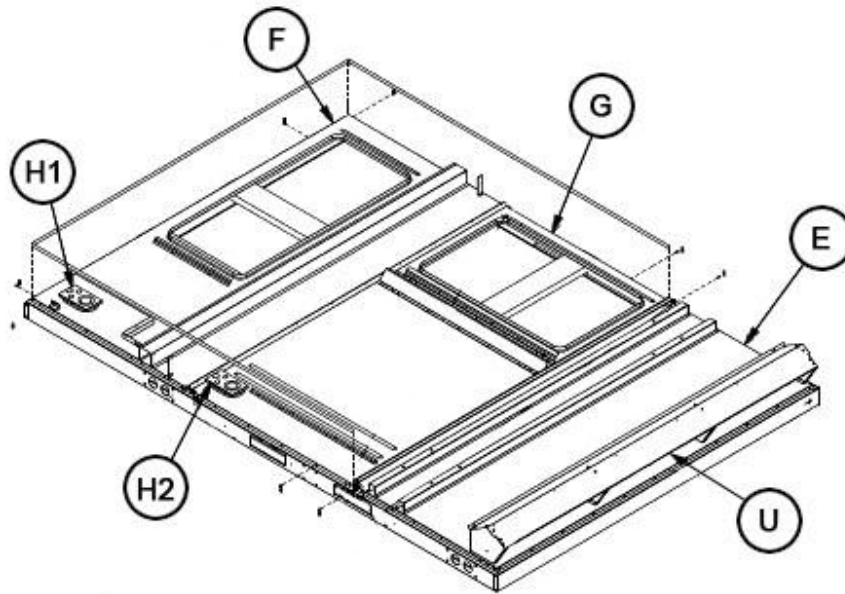
Front Panel Brackets H15



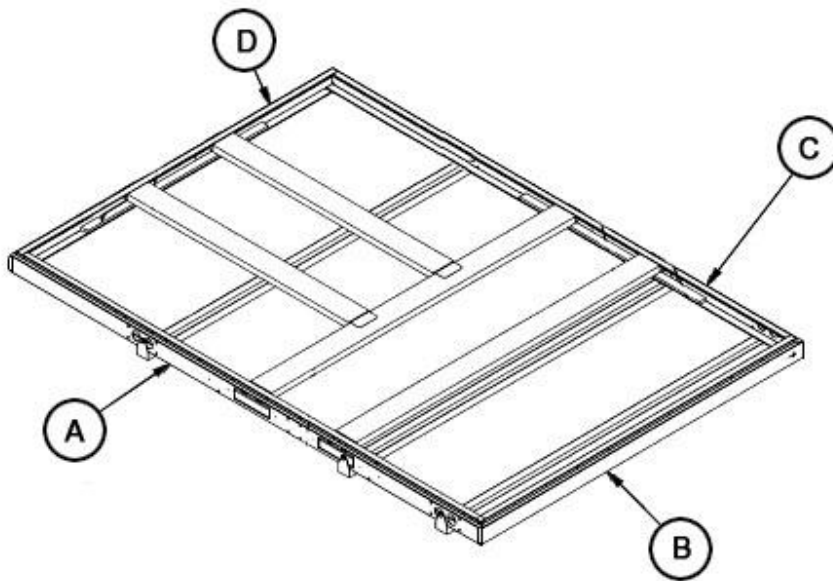
Heat Compartment H15



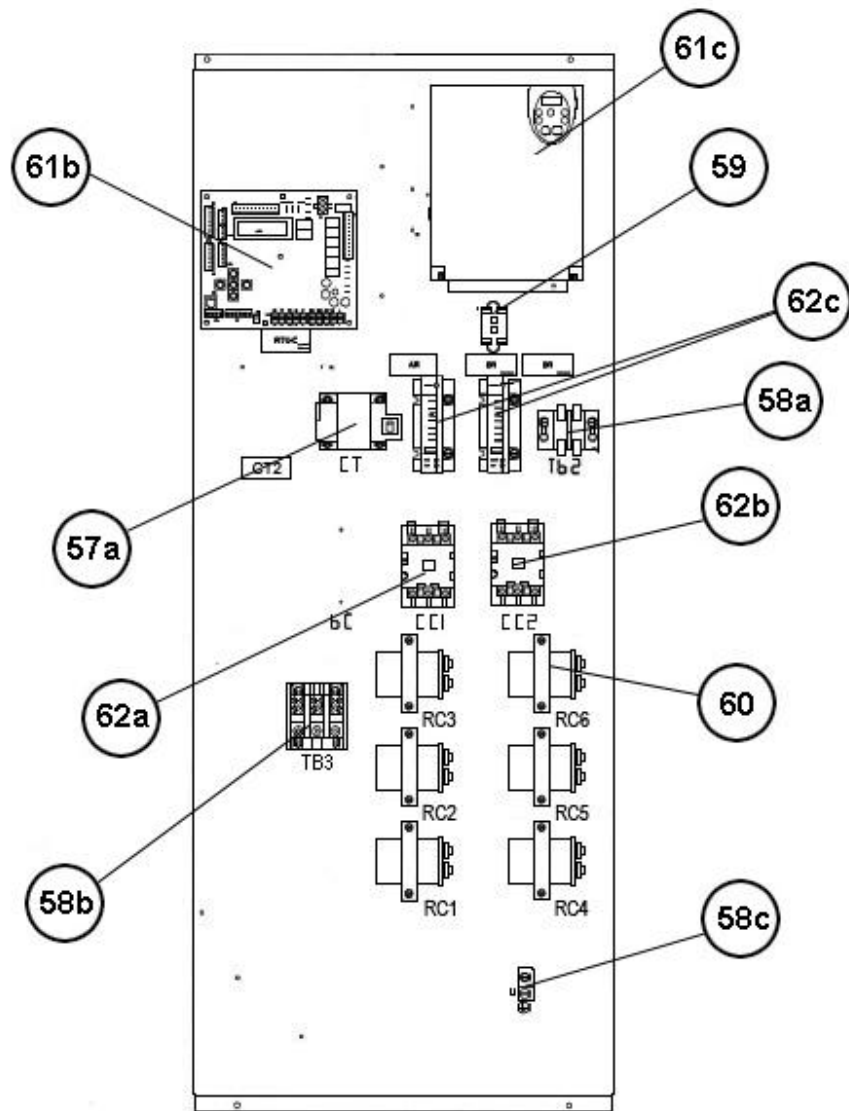
Condenser Bulkhead H15



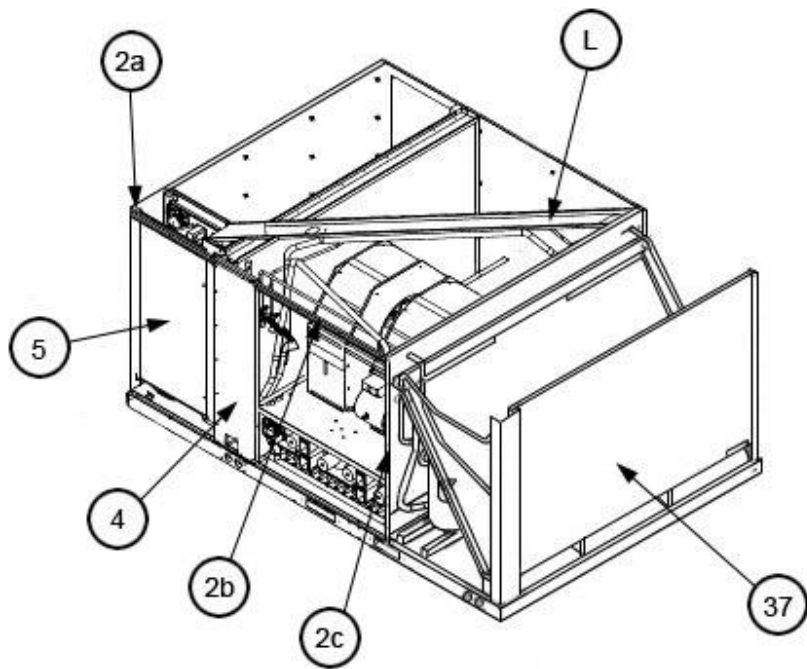
Base Pan Assembly H15-H20



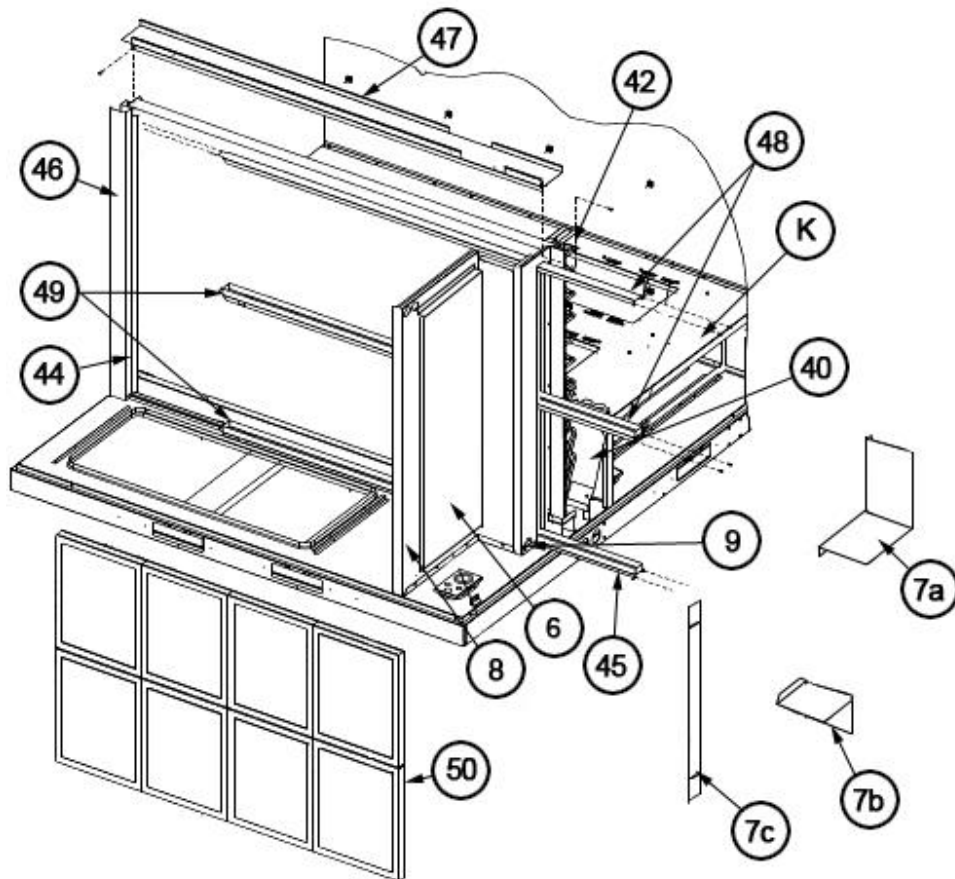
Base Rail Assembly H15-H20



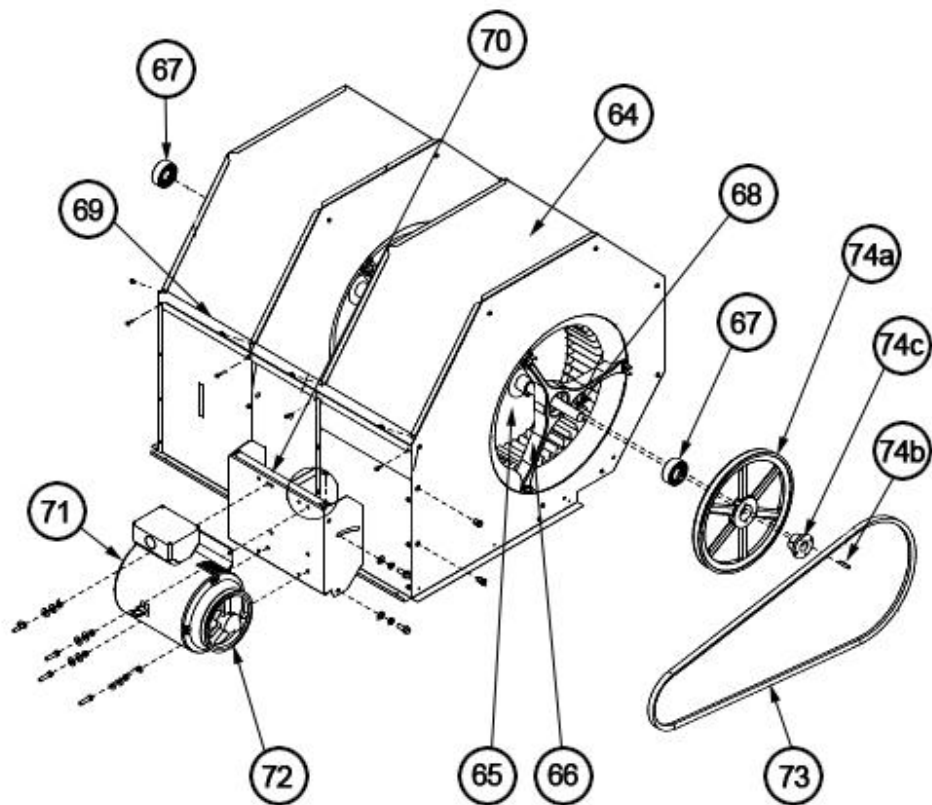
Control Box H15-H20



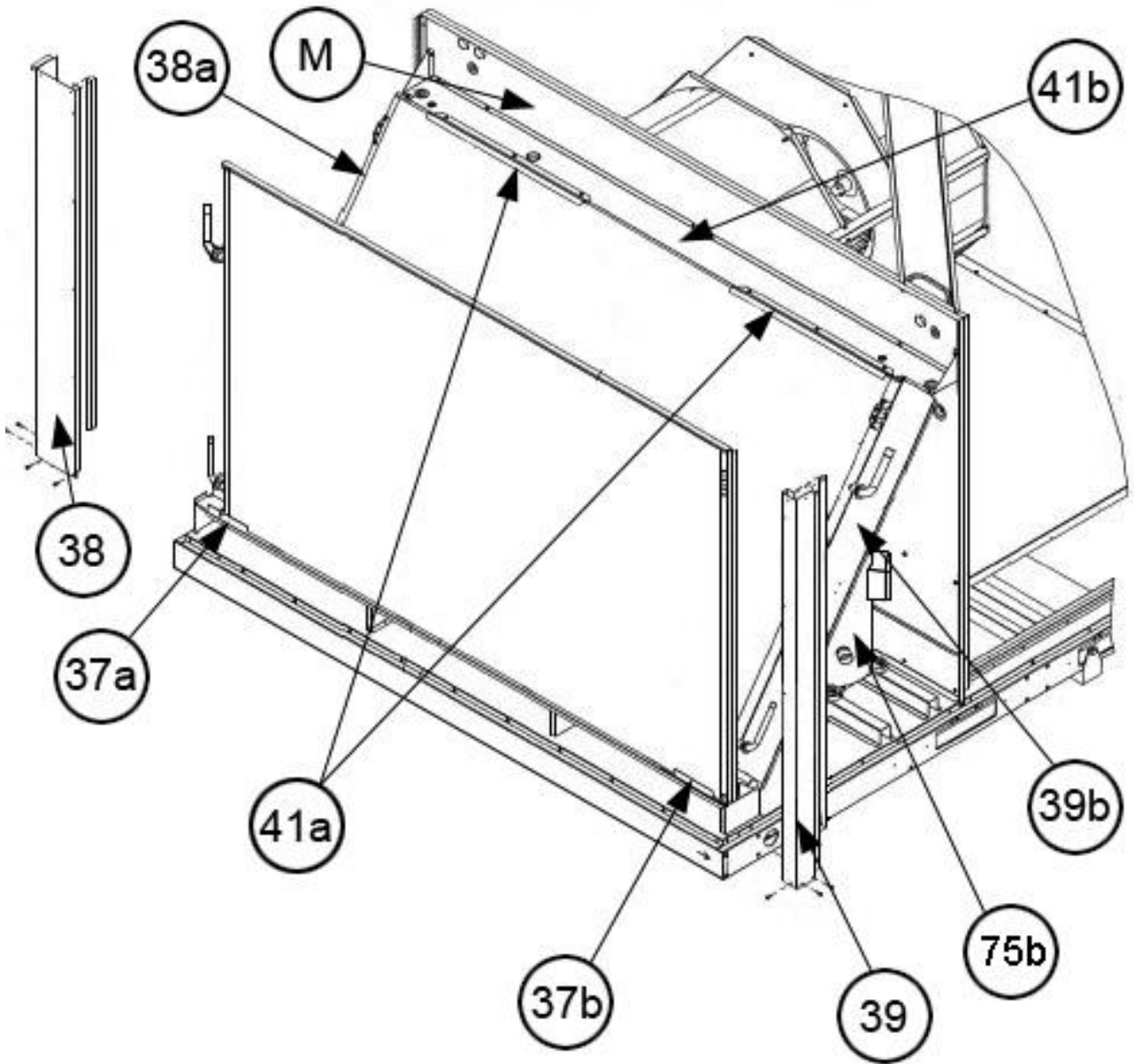
Interior - Front H15



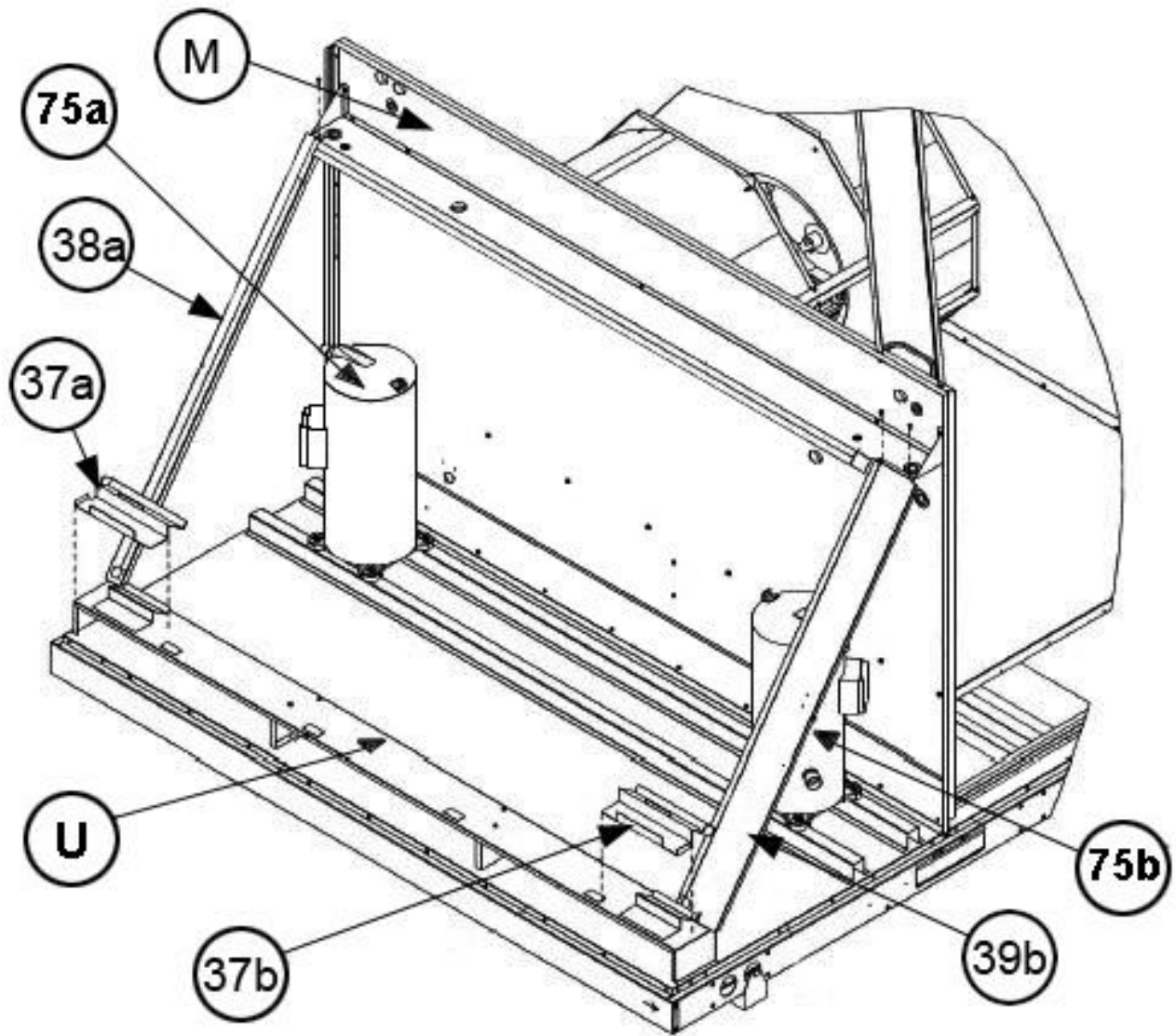
Filter Frame Assembly H15-H20



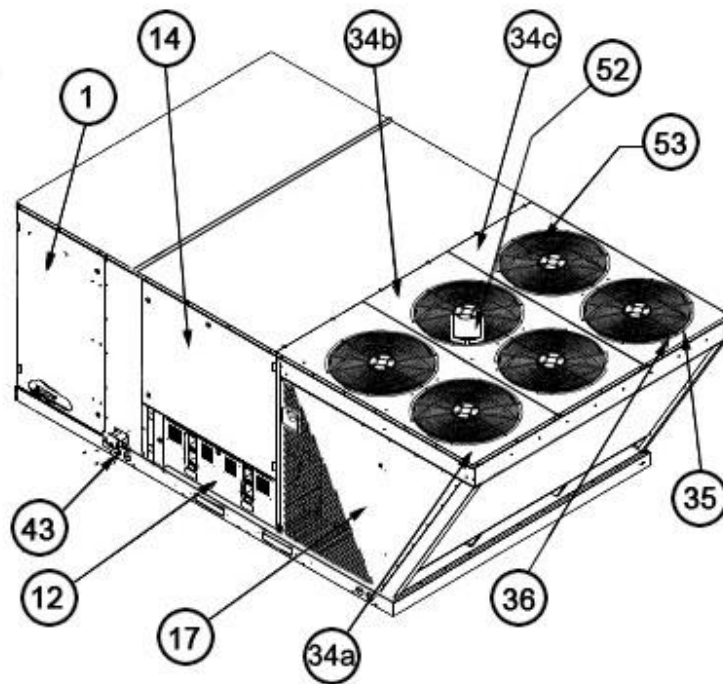
Blower Assembly H15-H20



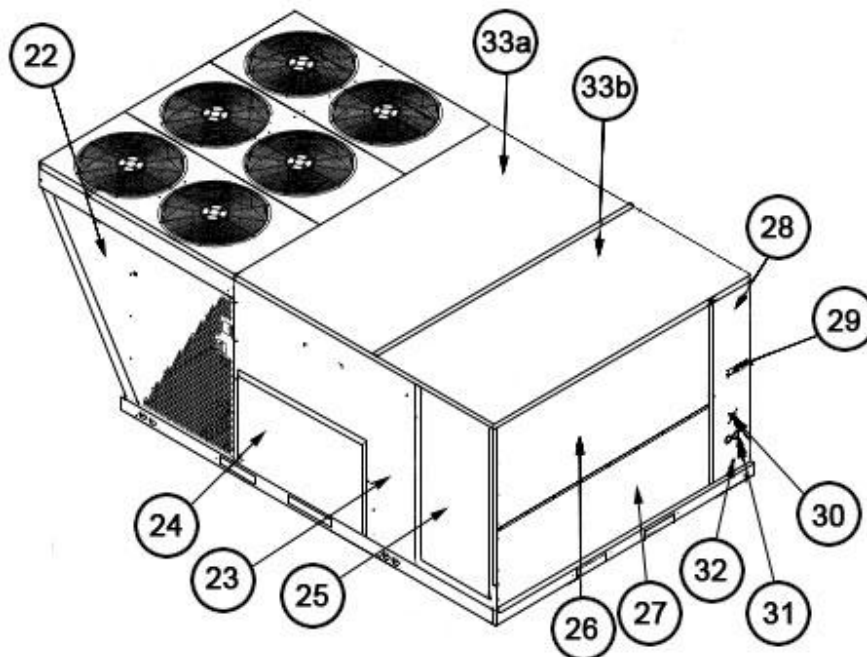
Condenser Coil H15



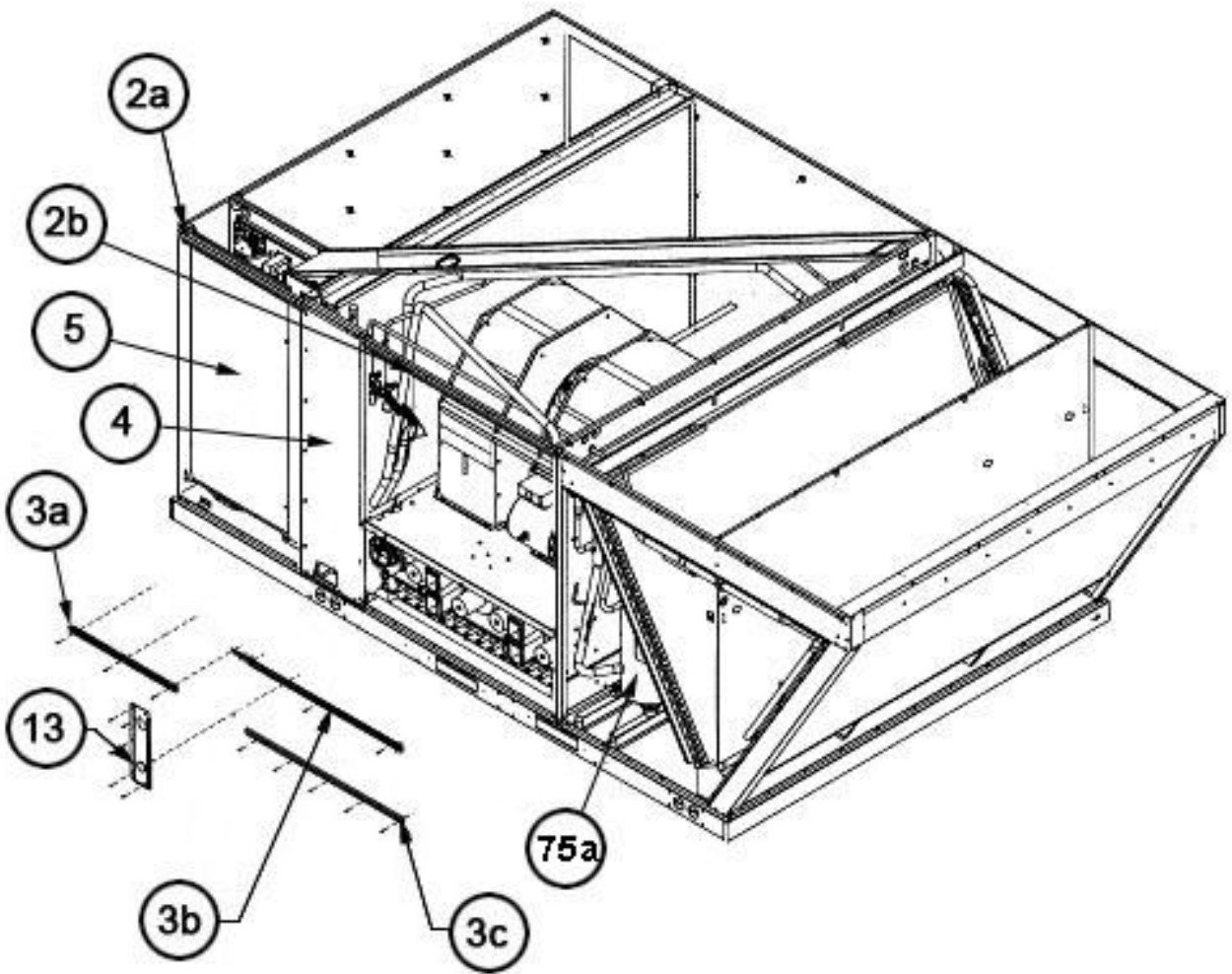
Condenser Coil Airstop H15



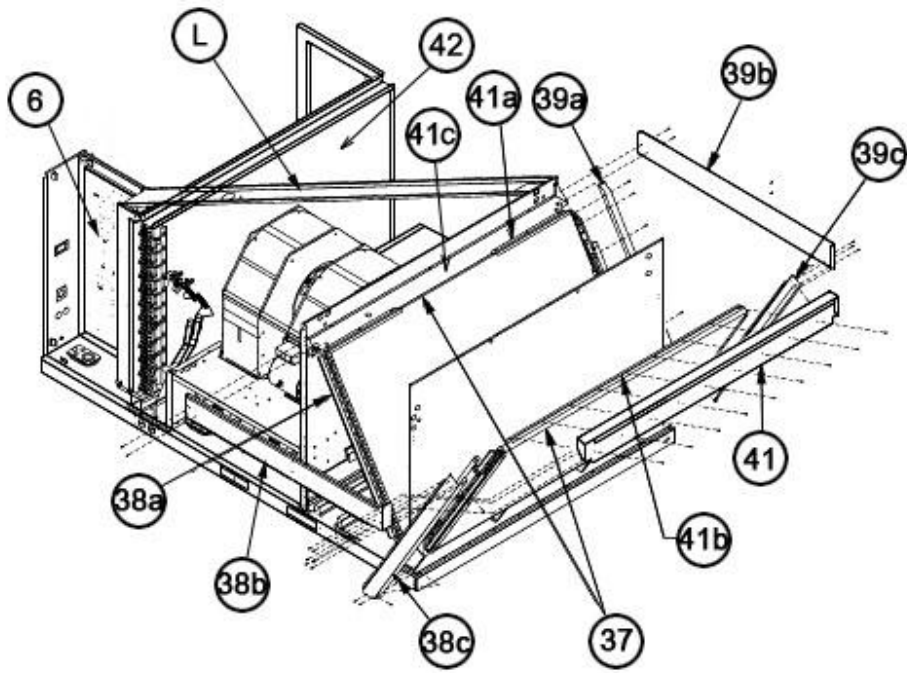
Exterior - Front H20



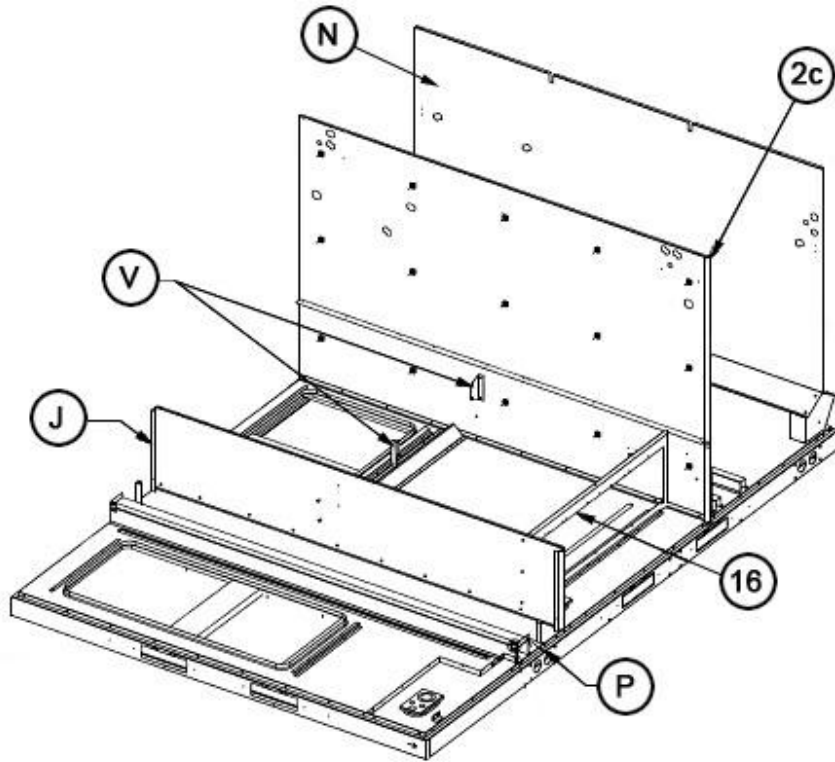
Exterior - Back H20



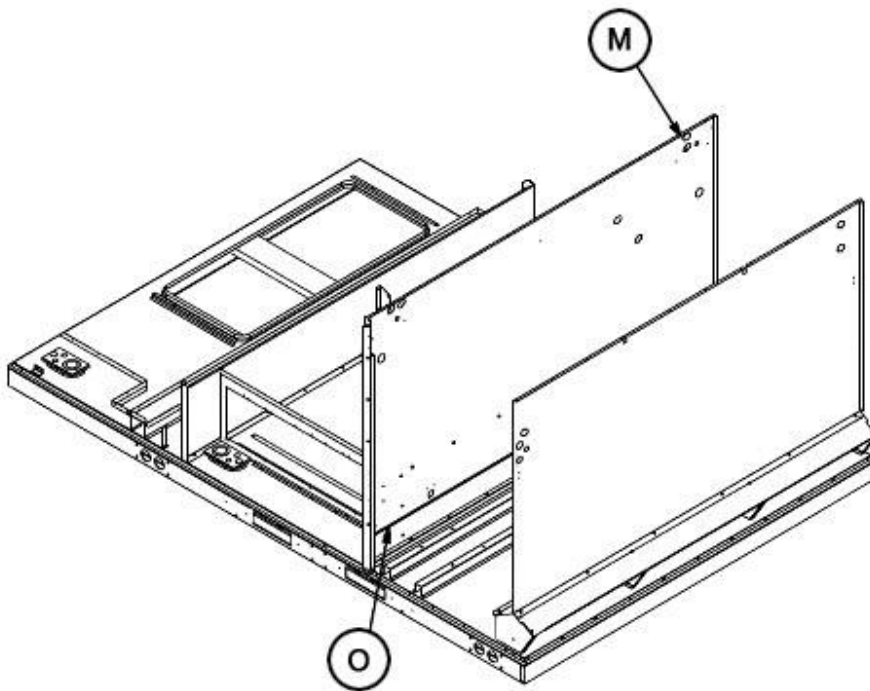
Front Panel Brackets H20



Interior - Coil (Airstop) H20



Heat Compartment H20



Condenser Bulkhead H20

NOTES

- Stk It is recommended that stock be maintained for this part.
- N/A Not Applicable
- 1 Temperature Sensors are integral with the Wiring Harness.