



# RJNL-B

Parts List  
22-December-2011



*This parts list is current as of the above revision date.  
See <http://www.rheempartslists.net/92-42800-RJNL-B.pdf> for the current revision.*

**Package Heat Pumps - Commercial**

# Table of Contents

|  |         |
|--|---------|
| Model Explanation .....                  | Page 3  |
| <b>Parts Numbers</b>                     |         |
| Panels - Miscellaneous 090-120 (1) ..... | Page 4  |
| Panels - Miscellaneous 090-120 (2) ..... | Page 5  |
| Panels - Miscellaneous 180 (1) .....     | Page 6  |
| Panels - Miscellaneous 180 (2) .....     | Page 7  |
| Electrical Group 090-120 (1) .....       | Page 8  |
| Electrical Group 090-120 (2) .....       | Page 9  |
| Electrical Group 180 (1) .....           | Page 10 |
| Electrical Group 180 (2) .....           | Page 11 |
| Fan Group 090-120 .....                  | Page 12 |
| Fan Group 180 .....                      | Page 13 |
| Blower Group 090-120 .....               | Page 14 |
| Blower Group 180 .....                   | Page 15 |
| Coil Parts 090-120 .....                 | Page 16 |
| Coil Parts 180 .....                     | Page 17 |
| Compressor Group 090-120 .....           | Page 18 |
| Compressor Group 180 .....               | Page 19 |
| Heater Kits 090-120 .....                | Page 20 |
| Heater Kits 180 .....                    | Page 21 |
| Accessories 090-120 .....                | Page 22 |
| Accessories 180 .....                    | Page 23 |
| <b>Drawings/Photographs</b>              |         |
| Exploded View 090-120 .....              | Page 24 |
| Exterior - Front 090-120 .....           | Page 25 |
| Front Panel Brackets 090-120 .....       | Page 26 |
| Exterior - Back 090-120 .....            | Page 27 |
| Filter-Coil Assembly 090-120 .....       | Page 28 |
| Filter Frame Assembly 090-120 .....      | Page 28 |
| Blower Assembly 090-120 .....            | Page 29 |
| Control Box 090-120 .....                | Page 30 |
| Exterior - Front 180 .....               | Page 31 |
| Exterior - Rear 180 .....                | Page 31 |
| Base Pan Assembly 180 .....              | Page 32 |
| Base Rail Assembly 180 .....             | Page 32 |
| Front Panel Brackets 180 .....           | Page 33 |
| Interior - Coil 180 .....                | Page 33 |
| Heat Compartment 180 .....               | Page 34 |
| Condenser Bulkhead 180 .....             | Page 34 |
| Filter Frame Assembly 180 .....          | Page 35 |
| Burner Assembly 180 .....                | Page 36 |
| Control Box 180 .....                    | Page 37 |
| Blower Assembly 180 .....                | Page 38 |
| Electric Heat Block-Off 180 .....        | Page 39 |
| Notes/Disclaimer .....                   | Page 40 |

**MODEL NUMBER EXPLANATION**

|          |          |          |          |          |          |            |          |          |            |           |          |
|----------|----------|----------|----------|----------|----------|------------|----------|----------|------------|-----------|----------|
| <b>R</b> | <b>J</b> | <b>N</b> | <b>L</b> | <b>-</b> | <b>B</b> | <b>090</b> | <b>C</b> | <b>L</b> | <b>000</b> | <b>AA</b> | <b>B</b> |
| 1        | 2        | 3        | 4        |          | 5        | 6          | 7        | 8        | 9          | 10        | 11       |

- |   |   |   |
|---|---|---|
| <p><b>1</b>    <b>TRADE NAME</b></p> <p><b>2</b>    <b>J = PACKAGE HEAT PUMP</b><br/><b>Commercial</b></p> <p><b>3</b>    <b>EFFICIENCY DESIGNATION</b><br/>N = High Efficiency</p> <p><b>4</b>    <b>DESIGN SERIES</b><br/>L = R-410A</p> <p><b>5</b>    <b>TECHNICAL VARIATION</b></p> <p><b>6</b>    <b>COOLING CAPACITY (BTU/HR)</b><br/>090 = 90,000<br/>120 = 120,000<br/>180 = 180,000</p> <p><b>7</b>    <b>ELECTRICAL DESIGNATION</b><br/>C =<br/>208-230/3/60<br/>D = 460/3/60<br/>Y = 575/3/60</p> | <p><b>8</b></p> <p><b>9</b></p> <p><b>10</b></p> <p><b>11</b></p> | <p><b>DRIVE PACKAGE</b><br/>L = Belt Drive<br/>M = Belt Drive - High Static<br/>N = Belt Drive - High Static 090 Only</p> <p><b>ELECTRIC HEAT- (Resistance Heat)</b><br/>000 = No Resistance Heat<br/>010 = 10 kW Resistance Heat<br/>015 = 15 kW Resistance Heat<br/>020 = 20 kW Resistance Heat<br/>030 = 30 kW Resistance Heat<br/>040 = 40 kW Resistance Heat<br/>050 = 50 kW Resistance Heat</p> <p><b>OPTION CODES - FACTORY INSTALLED</b></p> <p><b>ECONOMIZER OPTIONS</b></p> |
|---|---|---|

**SERIAL NUMBER EXPLANATION**

|             |          |           |           |              |
|-------------|----------|-----------|-----------|--------------|
| <b>1234</b> | <b>F</b> | <b>50</b> | <b>10</b> | <b>00001</b> |
| 1           | 2        | 3         | 4         | 5            |

- |   |   |
|---|---|
| <p><b>1</b></p> <p><b>2</b></p> <p><b>3</b></p> <p><b>4</b></p> <p><b>5</b></p> | <p><b>COMPRESSOR IDENTIFICATION NUMBER</b></p> <p><b>PRODUCTION LOCATION:</b></p> <p><b>WEEK OF PRODUCTION</b></p> <p><b>YEAR OF PRODUCTION</b></p> <p><b>PRODUCTION NUMBER</b></p> |
|---|---|

| No.  | Notes | MODEL<br>TECHNICAL VARIATION<br>COOLING CAPACITY | RJNL-<br>B<br>090 | RJNL-<br>B<br>120 |
|--|-------|--|-------------------|-------------------|
| <b>PANELS - RAILS, BASE PANS, INSIDE CABINET</b> |       |  |                   |                   |
| <b>BASE RAILS:</b>                               |       |  |                   |                   |
| A  |       | Base Rail - Front                                | AE-90575-15       | AE-90575-15       |
| B  |       | Base Rail - Right                                | AE-90576-03       | AE-90576-03       |
| C  |       | Base Rail - Rear                                 | AE-90575-04       | AE-90575-04       |
| D  |       | Base Rail - Left                                 | AE-90576-04       | AE-90576-04       |
| <b>BASE PANS:</b>                                |       |  |                   |                   |
| E  |       | Outdoor Coil Base Pan                            | AS-90583-11A      | AS-90583-11A      |
| F  |       | Indoor Coil Base Pan                             | AS-90577-12       | AS-90577-12       |
| <b>INSIDE CABINET:</b>                           |       |  |                   |                   |
| G  |       | Entry Plate                                      | AE-90614-02       | AE-90614-02       |
| H  |       | Entry Plate                                      | AE-90614-01       | AE-90614-01       |
| J  |       | Heat Compartment Side                            | AE-90598-09       | AE-90598-09       |
| K  |       | Blower Deck                                      | AS-90592-13       | AS-90592-13       |
| L  |       | Wireway  | AE-90718-05       | AE-90718-05       |
| M  |       | Condenser Bulkhead                               | AS-90609-16       | AS-90609-24       |

| No.                   | Notes | MODEL<br>TECHNICAL VARIATION<br>COOLING CAPACITY                  | RJNL-<br>B<br>090    | RJNL-<br>B<br>120 |
|-----------------------|-------|---|----------------------|-------------------|
| <b>PANELS - FRONT</b> |       |   |                      |                   |
| 1                     |       | Control Box Door Assembly - w/Hinges, Latch, Gasket, Insulation   | AS-102872-14A        | AS-102872-23A     |
| 2a                    |       | Bracket - Top Panel (Left)  | AS-102859-16A        | AS-102859-16A     |
| 2b                    |       | Bracket - Top Panel (Center)                                      | AS-102859-15A        | AS-102859-15A     |
| 2c                    |       | Post - Blower Section   | AS-102682-12A        | AS-102682-15A     |
| 3a                    |       | Bracket - Bottom Panel (Left)                                     | AS-102859-17A        | AS-102859-17A     |
| 3b                    |       | Bracket - Blower/Heater Compartment                               | AS-102859-14A        | AS-102859-14A     |
| 3c                    |       | Bracket - Bottom Panel (Right)                                    | AS-102859-13A        | AS-102859-13A     |
|                       |       | Latch Assembly - Control Box Door (2)                             | 64-102855-01         | 64-102855-01      |
| 4                     |       | Post Assembly - Indoor Coil Section                               | AS-90620-19A         | AS-90620-20A      |
| 5                     |       | Control Box Cover   | AE-90713-02          | AE-90713-06       |
| 6                     |       | Control Mounting Plate  | AE-90712-06          | AE-90712-06       |
| 7                     |       | Low Voltage Shield  | AE-90742-03          | AE-90742-08       |
| 8                     |       | Control Box Back Insulation Assembly                              | AS-90601-06          | AS-90601-07       |
| 9                     |       | Mounting Bracket  | AE-90779-02          | AE-90779-02       |
| 10                    |       | Electric Heat Blockoff Plate Assembly (models with no heat)       | AS-90720-02          | AS-90720-02       |
| 11                    |       | Terminal Block  | See Electrical Group |                   |
| 12                    |       | Electric Heat Access Panel Assembly - w/Hinges, Latch, Insulation | AS-102872-18A        | AS-102872-18A     |
|                       |       | Latch Assembly - Electric Heat Door (2)                           | 64-102855-01         | 64-102855-01      |
| 13                    |       | Power Entry Plate Assembly  | AS-90774-11A         | AS-90774-11A      |
| 14                    |       | Blower Access Panel Assembly - w/Hinges, Latch, Insulation        | AS-102872-16A        | AS-102872-22A     |
|                       |       | Latch Assembly - Blower Access Panel (3)                          | 64-102855-01         | 64-102855-01      |
| 16                    |       | Heat Mounting Frame Assembly                                      | AS-90754-02          | AS-90754-02       |
| 17                    |       | Access Panel - Compressor (Front)                                 | AS-90734-10A         | AS-90734-11A      |
| 18                    |       | Front Corner Post   | AS-90701-06A         | AS-90701-07A      |

| No.  | Notes | MODEL<br>TECHNICAL VARIATION<br>COOLING CAPACITY | RJNL-<br>B<br>090   | RJNL-<br>B<br>120   |
|--|-------|--|---------------------|---------------------|
| <b>PANELS - RIGHT, REAR AND LEFT SIDES</b> |       |  |                     |                     |
| <b>RIGHT:</b>                              |       |  |                     |                     |
| 19   |       | Post   | AS-90732-02A        | AS-90732-06A        |
| 20   |       | Louver Panel Assembly                            | See Accessories     |                     |
| <b>REAR:</b>                               |       |  |                     |                     |
| 21   |       | Rear Corner Post                                 | AS-90702-02A        | AS-90702-05A        |
| 23   |       | Rear Panel                                       | AS-90618-02A        | AS-90618-09A        |
| 24   |       | Supply Cover                                     | AS-90626-02A        | AS-90626-02A        |
| 25   |       | Return Cover                                     | AS-90628-02A        | AS-90628-02A        |
| <b>LEFT:</b>                               |       |  |                     |                     |
| 26a  |       | Top Left Panel                                   | N/A                 | AS-90624-10A        |
| 26   |       | Left Panel                                       | AS-90624-03A        | AS-90624-03A        |
| 27   |       | Lower Left Panel                                 | AS-90624-04A        | AS-90624-04A        |
| 28   |       | Left Corner Panel                                | AS-90755-07A        | AS-90755-08A        |
| 29   |       | Plate - Receptacle                               | AS-90756-02A        | AS-90756-02A        |
| 30   |       | Plate - Disconnect                               | AS-90756-03A        | AS-90756-03A        |
| 31   |       | Button Plug (2)                                  | 45-22980-06         | 45-22980-06         |
| 32   |       | Button Plug                                      | 45-22980-05         | 45-22980-05         |
| <b>TOP:</b>                                |       |  |                     |                     |
| 33   |       | Top Panel Assembly                               | AS-90616-06A        | AS-90616-06A        |
| 34   |       | Condenser Top Panel                              | AS-90703-10A        | AS-90703-10A        |
| 35   |       | Venturi  | AS-90632-03A<br>(2) | AS-90632-03A<br>(2) |
| 36   |       | Wire Grille                                      | 95-100906-09<br>(2) | 95-100906-09<br>(2) |
| 43   |       | Drain Pan - Removable                            | See Coil Group      |                     |

| No.  | Notes | MODEL<br>TECHNICAL VARIATION<br>COOLING CAPACITY |  |  | RJNL-<br>B<br>180 |
|--|-------|--|--|--|-------------------|
| <b>PANELS - RAILS, BASE PANS, INSIDE CABINET</b> |       |  |  |  |                   |
| <b>BASE RAILS:</b>                               |       |  |  |  |                   |
| A  |       | Front  |  |  | AS-90827-03       |
| B  |       | Right  |  |  | AE-90576-06       |
| C  |       | Rear   |  |  | AS-90827-04       |
| D  |       | Left   |  |  | AE-90576-05       |
| <b>BASE PANS:</b>                                |       |  |  |  |                   |
| E  |       | Outdoor Base Pan                                 |  |  | AS-90583-09A      |
| F  |       | Indoor Coil Base Pan - Return Air                |  |  | AS-90577-09       |
| G  |       | Indoor Coil Base Pan - Supply Air                |  |  | AS-90577-10       |
| <b>INSIDE CABINET PANEL/PIECES:</b>              |       |  |  |  |                   |
| H 1  |       | Entry Plate                                      |  |  | AE-90614-01       |
| H 2  |       | Entry Plate - Rooftop                            |  |  | AE-90614-02       |
| J  |       | Heat Compartment Side                            |  |  | AE-90598-08       |
| K  |       | Blower Deck Assembly                             |  |  | AS-90592-11       |
| L  |       | Wireway  |  |  | AE-90718-04       |
| M  |       | Condenser Bulkhead                               |  |  | AS-90609-17       |
| N  |       | Divider Panel - Between Coils                    |  |  | AE-90735-05       |
| O  |       | Bulkhead Support                                 |  |  | AE-102725-01      |
| P  |       | Primary Drain Pan                                |  |  | AS-103030-02      |
|  |       | Air Stop - Outdoor Coil- Front                   |  |  | AE-90706-13       |
|  |       | Air Stop - Outdoor Coil- Rear                    |  |  | AE-90706-12       |
| U  |       | Coil Support Top                                 |  |  | AE-102700-03      |
| V  |       | Angle - Tube Support (2)                         |  |  | N/A               |

| No.                                   | Notes | MODEL<br>TECHNICAL VARIATION<br>COOLING CAPACITY                          |  |                      | RJNL-<br>B<br>180 |
|---------------------------------------|-------|---|--|----------------------|-------------------|
| <b>PANELS - FRONT AND RIGHT SIDES</b> |       |   |  |                      |                   |
| 1                                     |       | Control Box Door Assembly - w/Hinges, Latch, Gasket, Insulation           |  |                      | AS-102872-04A     |
| 2a                                    |       | Bracket - Top Panel (Left)  |  |                      | AS-102859-01A     |
| 2b                                    |       | Bracket - Top Panel (Center)  |  |                      | AS-102969-01A     |
| 2c                                    |       | Post - Blower Section   |  |                      | AS-102682-07A     |
| 3a                                    |       | Bracket - Bottom Panel (Left)   |  |                      | AS-102859-02A     |
| 3b                                    |       | Bracket - Blower/Heater Compartment                                       |  |                      | AS-102859-11A     |
| 3c                                    |       | Bracket - Bottom Panel (Right)  |  |                      | AS-102859-12A     |
| 4                                     |       | Post Assembly - Indoor Coil Section                                       |  |                      | AS-90620-15A      |
| 5                                     |       | Control Box Cover   |  |                      | AE-90713-05       |
| 6                                     |       | Control Mounting Panel  |  |                      | AE-90712-05       |
| 7a                                    |       | Low Voltage Shield - Control Box (Upper Right)                            |  |                      | AE-90742-07       |
| 7b                                    |       | Low Voltage Shield - Control Box (Lower Left)                             |  |                      | AE-90742-06       |
| 7c                                    |       | Thermostat Chase Cover  |  |                      | AE-102722-01      |
| 8                                     |       | Control Box Back  |  |                      | AS-90601-05       |
| 9                                     |       | Mounting Bracket  |  |                      | AE-90779-02       |
| 10                                    |       | Electric Heat Blockoff Plate Assembly (models with no heat)               |  |                      | AS-90720-03       |
| 11                                    |       | Terminal Block - Heat Compartment   |  | See Electrical Group |                   |
| 12                                    |       | Electric Heat Access Panel Assembly - w/Hinges, Latch, Gasket, Insulation |  |                      | AS-102872-06A     |
| 13                                    |       | Power Entry Plate Assembly  |  |                      | AS-90774-13A      |
| 14                                    |       | Blower Access Panel Assembly - w/Hinges, Latch, Gasket, Insulation        |  |                      | AS-102872-02A     |
| 15                                    |       | Ground Lug - Heat Compartment   |  | See Electrical Group |                   |
| 16                                    |       | Mounting Frame - Heat Exchanger Frame                                     |  |                      | AS-90754-04       |
| 17                                    |       | Condenser Coil Access Panel-Front   |  |                      | AS-90734-12A      |
| 38c                                   |       | Post - Outdoor Coil (Front)   |  | See Coil Group       |                   |
| 39c                                   |       | Post - Outdoor Coil (Rear)  |  | See Coil Group       |                   |

| No.                                 | Notes | MODEL<br>TECHNICAL VARIATION<br>COOLING CAPACITY |  |                | RJNL-<br>B<br>180   |
|-------------------------------------|-------|--|--|----------------|---------------------|
| <b>PANELS - REAR, LEFT, AND TOP</b> |       |  |  |                |                     |
| <b>REAR:</b>                        |       |  |  |                |                     |
| 22                                  |       | Condenser Coil Access Panel-Rear                 |  |                | AS-90734-13A        |
| 23                                  |       | Rear Panel - Right                               |  |                | AS-90618-08A        |
| 24                                  |       | Supply Cover                                     |  |                | AS-90628-03A        |
| 25                                  |       | Return Cover                                     |  |                | AS-90628-04A        |
| <b>LEFT:</b>                        |       |  |  |                |                     |
| 26                                  |       | Upper Left Panel                                 |  |                | AS-90624-09A        |
| 27                                  |       | Lower Left Panel                                 |  |                | AS-90624-08A        |
| 28                                  |       | Left Corner Panel Assembly                       |  |                | AS-90755-05A        |
|                                     |       | Bracket - Left Corner Panel Assembly (2)         |  |                | AE-90779-01         |
|                                     |       | Gasket for receptacle plate                      |  |                | 68-42514-08         |
|                                     |       | Gasket for disconnect plate                      |  |                | 68-42514-09         |
| 29                                  |       | Plate - Install inside Panel-Receptacle          |  |                | AS-90756-02A        |
| 30                                  |       | Plate - Install inside Panel-Disconnect          |  |                | AS-90756-03A        |
| 31                                  |       | Button Plug (3)                                  |  |                | 45-42558-01         |
| 32                                  |       | Star Bushing (3)                                 |  |                | 45-18515-01         |
| <b>TOP:</b>                         |       |  |  |                |                     |
| 33a                                 |       | Top Panel Assembly - Right                       |  |                | AS-90616-04A        |
| 33b                                 |       | Top Panel Assembly - Left                        |  |                | AS-90616-05A        |
| 34a                                 |       | Top Panel - Front                                |  |                | AS-90633-10A        |
| 34b                                 |       | Top Panel - Middle                               |  |                | AS-90633-12A        |
| 34c                                 |       | Top Panel - Rear                                 |  |                | AS-90633-09A        |
| 35                                  |       | Venturi  |  |                | AS-90632-03A<br>(4) |
| 36                                  |       | Wire Grille                                      |  |                | 95-100906-09<br>(4) |
| 43                                  |       | Drain Pan - Removable                            |  | See Coil Group |                     |

| No.                            | Notes | MODEL<br>TECHNICAL VARIATION<br>COOLING CAPACITY<br>ELECTRICAL DESIGNATION | RJNL-<br>B<br>090<br>C | RJNL-<br>B<br>120<br>C |
|--------------------------------|-------|--|------------------------|------------------------|
| <b>ELECTRIC GROUP</b>          |       |  |                        |                        |
| 11                             |       | Terminal Block   | 45-41669-01            | 45-41669-01            |
| <b>CONTROL BOX COMPONENTS:</b> |       |  |                        |                        |
| 57                             | Stk   | Transformer - Control  | 46-42515-04            | 46-42515-04            |
| 58a                            |       | Double Row Terminal Block  | 45-42548-02            | 45-42548-02            |
| 58b                            |       | Ground Lug   | 45-19000-02            | 45-19000-02            |
| 59                             | Stk   | Contactora - Blower  | 42-102664-08           | 42-102664-08           |
| 60                             |       | Capacitor - Fan Motor  | See Fan Group          |                        |
|                                |       | High Pressure Control  | See Coil Group         |                        |
|                                |       | Low Pressure Control   | See Coil Group         |                        |
| 61                             |       | Control Board  | 47-102884-01           | 47-102884-01           |
|                                |       | Defrost Control Board  | 47-102684-02           | 47-102684-02           |
| 62                             | Stk   | Compressor Contactor   | 42-102664-14           | 42-102664-19           |
|                                |       | Defrost Relay  | 42-19736-05            | 42-19736-05            |
| <b>WIRING HARNESES:</b>        |       |  |                        |                        |
|                                |       | Wiring Harness - Reversing Valve   | See Coil Group         |                        |
|                                |       | Wiring Harness - Motor #1  | See Fan Group          |                        |
|                                |       | Wiring Harness - Motor #2  | See Fan Group          |                        |
|                                |       | Wiring Harness - Twist-Loc 12 Pin to 9 Pin                                 | 45-102706-05           | 45-102706-05           |
|                                |       | Wiring Harness - Compressor  | See Compressor Group   |                        |
|                                |       | Wiring Harness - Main Power  | 45-42522-09            | 45-42522-09            |
|                                |       | Bypass Plug - Economizer 12 Pin  | AS-61997-55            | AS-61997-55            |
|                                |       | Wiring Harness - 6 Pin to Heater Kit                                       | 45-102706-09           | 45-102706-09           |

| No.                            | Notes | MODEL<br>TECHNICAL VARIATION<br>COOLING CAPACITY<br>ELECTRICAL DESIGNATION | RJNL-<br>B<br>090<br>D | RJNL-<br>B<br>120<br>D |
|--------------------------------|-------|--|------------------------|------------------------|
| <b>ELECTRIC GROUP</b>          |       |  |                        |                        |
| 11                             |       | Terminal Block   | 45-41669-01            | 45-41669-01            |
| <b>CONTROL BOX COMPONENTS:</b> |       |  |                        |                        |
| 57                             | Stk   | Transformer - Control  | 46-42515-05            | 46-42515-05            |
| 58a                            |       | Double Row Terminal Block  | 45-42548-02            | 45-42548-02            |
| 58b                            |       | Ground Lug   | 45-19000-02            | 45-19000-02            |
| 59                             | Stk   | Contactora - Blower  | 42-102664-08           | 42-102664-08           |
| 60                             |       | Capacitor - Fan Motor  | See Fan Group          |                        |
|                                |       | High Pressure Control  | See Coil Group         |                        |
|                                |       | Low Pressure Control   | See Coil Group         |                        |
| 61                             |       | Control Board  | 47-102884-01           | 47-102884-01           |
|                                |       | Defrost Control Board  | 47-102684-02           | 47-102684-02           |
| 62                             | Stk   | Compressor Contactor   | 42-102664-14           | 42-102664-19           |
|                                |       | Defrost Relay  | 42-19736-05            | 42-19736-05            |
| <b>WIRING HARNESES:</b>        |       |  |                        |                        |
|                                |       | Wiring Harness - Reversing Valve   | See Coil Group         |                        |
|                                |       | Wiring Harness - Motor #1  | See Fan Group          |                        |
|                                |       | Wiring Harness - Motor #2  | See Fan Group          |                        |
|                                |       | Wiring Harness - Twist-Loc 12 Pin to 9 Pin                                 | 45-102706-05           | 45-102706-05           |
|                                |       | Wiring Harness - Compressor  | See Compressor Group   |                        |
|                                |       | Wiring Harness - Main Power  | 45-42522-09            | 45-42522-09            |
|                                |       | Bypass Plug - Economizer 12 Pin  | AS-61997-55            | AS-61997-55            |
|                                |       | Wiring Harness - 6 Pin to Heater Kit                                       | 45-102706-09           | 45-102706-09           |

| No.                            | Notes | MODEL<br>TECHNICAL VARIATION<br>COOLING CAPACITY<br>ELECTRICAL DESIGNATION | RJNL-<br>B<br>090<br>Y |
|--------------------------------|-------|--|------------------------|
| <b>ELECTRIC GROUP</b>          |       |  |                        |
| 11                             |       | Terminal Block   | 45-41669-01            |
| <b>CONTROL BOX COMPONENTS:</b> |       |  |                        |
| 57                             | Stk   | Transformer - Control  | 46-42515-05            |
| 58a                            |       | Double Row Terminal Block  | 45-42548-02            |
| 58b                            |       | Ground Lug   | 45-19000-02            |
| 59                             | Stk   | Contactora - Blower  | 42-102664-08           |
| 60                             |       | Capacitor - Fan Motor  | See Fan Group          |
|                                |       | High Pressure Control  | See Coil Group         |
|                                |       | Low Pressure Control   | See Coil Group         |
| 61                             | Stk   | Control Board  | 47-102884-01           |
|                                |       | Defrost Control Board  | 47-102684-02           |
| 62                             | Stk   | Compressor Contactora  | 42-102664-14           |
|                                | Stk   | Defrost Relay  | 42-19736-05            |
| <b>WIRING HARNESES:</b>        |       |  |                        |
|                                |       | Wiring Harness - Reversing Valve   | See Coil Group         |
|                                |       | Wiring Harness - Motor #1  | See Fan Group          |
|                                |       | Wiring Harness - Motor #2  | See Fan Group          |
|                                |       | Wiring Harness - Twist-Loc 12 Pin to 9 Pin                                 | 45-102706-05           |
|                                |       | Wiring Harness - Compressor  | See Compressor Group   |
|                                |       | Wiring Harness - Main Power  | 45-42522-09            |
|                                |       | Bypass Plug - Economizer 12 Pin  | AS-61997-55            |
|                                |       | Wiring Harness - 6 Pin to Heater Kit                                       | 45-102706-09           |

| No.                            | Notes | MODEL<br>TECHNICAL VARIATION<br>COOLING CAPACITY<br>ELECTRICAL DESIGNATION |  |                      | RJNL-<br>B<br>180<br>C |
|--------------------------------|-------|--|--|----------------------|------------------------|
| <b>ELECTRIC GROUP</b>          |       |  |  |                      |                        |
| 11                             |       | Terminal Block - Heater Compartment  |  |                      | 45-21134-04            |
| 15                             |       | Ground Lug - Heater Compartment  |  |                      | 45-19000-02            |
| <b>CONTROL BOX COMPONENTS:</b> |       |  |  |                      |                        |
| 57a                            | Stk   | Transformer - Control  |  |                      | 46-42515-04            |
| 57b                            | Stk   | Transformer - Control  |  |                      | 46-42515-01            |
| 58a                            |       | Terminal Block - Double Row  |  |                      | 45-42548-02            |
| 58b                            |       | Terminal Block   |  |                      | 45-21134-04            |
|                                |       | Terminal Block - Power Block   |  |                      | 45-41765-01            |
| 58c                            |       | Ground Lug   |  |                      | 45-19000-02            |
| 59a                            | Stk   | Contactora - Blower  |  |                      | 42-102664-08           |
| 59b                            | Stk   | Contactora - Compressor (2)  |  |                      | 42-102664-23           |
| 60                             |       | Run Capacitor  |  | See Fan Group        |                        |
|                                |       | High Pressure Control  |  | See Coil Group       |                        |
|                                |       | Low Pressure Control   |  | See Coil Group       |                        |
| 61a                            |       | Defrost Control Board (2)  |  |                      | 47-102684-02           |
| 61b                            |       | Control Board  |  |                      | 47-102884-01           |
| 61c                            |       | Defrost Relay (2)  |  |                      | 42-19736-05            |
| 61d                            |       | Electric Heat Relay  |  |                      | 42-19736-05            |
| <b>WIRING HARNESES:</b>        |       |  |  |                      |                        |
|                                |       | Wiring Harness - Motor #1 & #4   |  | See Fan Group        |                        |
|                                |       | Wiring Harness - Motor #3 & #6   |  | See Fan Group        |                        |
|                                |       | Plug Harness - Compressor  |  | See Compressor Group |                        |
|                                |       | Wirng Harness - Main Power   |  |                      | 45-42522-92            |
|                                |       | Bypass Plug - Economizer 12 Pin  |  |                      | AS-61997-55            |
|                                |       | Wiring Harness - 6 Pin to Heater Kit                                       |  |                      | 45-42522-91            |
|                                |       | Wiring Harness - Economizer (12 pin to 9 pin)                              |  |                      | 45-42522-89            |

| No.                            | Notes | MODEL<br>TECHNICAL VARIATION<br>COOLING CAPACITY<br>ELECTRICAL DESIGNATION |  |                      | RJNL-<br>B<br>180<br>D |
|--------------------------------|-------|--|--|----------------------|------------------------|
| <b>ELECTRIC GROUP</b>          |       |  |  |                      |                        |
| 11                             |       | Terminal Block - Heater Compartment  |  |                      | 45-21134-04            |
| 15                             |       | Ground Lug - Heater Compartment  |  |                      | 45-19000-02            |
| <b>CONTROL BOX COMPONENTS:</b> |       |  |  |                      |                        |
| 57a                            | Stk   | Transformer - Control  |  |                      | 46-42515-05            |
| 57b                            | Stk   | Transformer - Control  |  |                      | 46-42515-02            |
| 58a                            |       | Terminal Block - Double Row  |  |                      | 45-42548-02            |
| 58b                            |       | Terminal Block   |  |                      | 45-21134-04            |
|                                |       | Terminal Block - Power Block   |  |                      | 45-41765-01            |
| 58c                            |       | Ground Lug   |  |                      | 45-19000-02            |
| 59a                            | Stk   | Contactora - Blower  |  |                      | 42-22464-01            |
| 59b                            | Stk   | Contactora - Compressor (2)  |  |                      | 42-102664-23           |
| 60                             |       | Run Capacitor  |  | See Fan Group        |                        |
|                                |       | High Pressure Control  |  | See Coil Group       |                        |
|                                |       | Low Pressure Control   |  | See Coil Group       |                        |
| 61a                            |       | Control Board  |  |                      | 47-102884-01           |
| 61b                            |       | Defrost Control Board (2)  |  |                      | 47-102684-02           |
| 61c                            |       | Defrost Relay (2)  |  |                      | 42-19736-05            |
| 61d                            |       | Electric Heat Relay  |  |                      | 42-19736-05            |
| 62                             | Stk   | Compressor Contactora (2)  |  |                      | 42-102664-23           |
| <b>WIRING HARNESES:</b>        |       |  |  |                      |                        |
|                                |       | Wiring Harness - Motor #1 & #4   |  | See Fan Group        |                        |
|                                |       | Wiring Harness - Motor #3 & #6   |  | See Fan Group        |                        |
|                                |       | Plug Harness - Compressor  |  | See Compressor Group |                        |
|                                |       | Wirng Harness - Main Power   |  |                      | 45-42522-92            |
|                                |       | Bypass Plug - Economizer 12 Pin  |  |                      | AS-61997-55            |
|                                |       | Wiring Harness - 6 Pin to Heater Kit                                       |  |                      | 45-42522-91            |
|                                |       | Wiring Harness - Economizer (12 pin to 9 pin)                              |  |                      | 45-42522-89            |

| No.                            | Notes | MODEL<br>TECHNICAL VARIATION<br>COOLING CAPACITY<br>ELECTRICAL DESIGNATION |  |                      | RJNL-<br>B<br>180<br>Y |
|--------------------------------|-------|--|--|----------------------|------------------------|
| <b>ELECTRIC GROUP</b>          |       |  |  |                      |                        |
| 11                             |       | Terminal Block - Heater Compartment  |  |                      | 45-21134-04            |
| 15                             |       | Ground Lug - Heater Compartment  |  |                      | 45-19000-02            |
| <b>CONTROL BOX COMPONENTS:</b> |       |  |  |                      |                        |
| 57a                            | Stk   | Transformer - Control  |  |                      | 46-42515-05            |
| 57b                            | Stk   | Transformer - Control  |  |                      | 46-42515-02            |
| 58a                            |       | Terminal Block - Double Row  |  |                      | 45-42548-02            |
| 58b                            |       | Terminal Block   |  |                      | 45-41765-01            |
|                                |       | Terminal Block - Power Block   |  |                      | 45-41765-01            |
| 58c                            |       | Ground Lug   |  |                      | 45-19000-02            |
| 59a                            | Stk   | Contactora - Blower  |  |                      | 42-22464-01            |
| 59b                            | Stk   | Contactora - Compressor (2)  |  |                      | 42-102664-23           |
| 60                             |       | Run Capacitor  |  | See Fan Group        |                        |
|                                |       | High Pressure Control  |  | See Coil Group       |                        |
|                                |       | Low Pressure Control   |  | See Coil Group       |                        |
| 61a                            |       | Control Board  |  |                      | 47-102884-01           |
| 61b                            |       | Defrost Control Board (2)  |  |                      | 47-102684-02           |
| 61c                            |       | Defrost Relay (2)  |  |                      | 42-19736-05            |
| 61d                            |       | Electric Heat Relay  |  |                      | 42-19736-05            |
| 62                             | Stk   | Compressor Contactora (2)  |  |                      | 42-102664-23           |
| <b>WIRING HARNESES:</b>        |       |  |  |                      |                        |
|                                |       | Wiring Harness - Motor #1 & #4   |  | See Fan Group        |                        |
|                                |       | Wiring Harness - Motor #3 & #6   |  | See Fan Group        |                        |
|                                |       | Plug Harness - Compressor  |  | See Compressor Group |                        |
|                                |       | Wirng Harness - Main Power   |  |                      | 45-42522-92            |
|                                |       | Bypass Plug - Economizer 12 Pin  |  |                      | AS-61997-55            |
|                                |       | Wiring Harness - 6 Pin to Heater Kit                                       |  |                      | 45-42522-91            |
|                                |       | Wiring Harness - Economizer (12 pin to 9 pin)                              |  |                      | 45-42522-89            |

| No.              | Notes | MODEL<br>TECHNICAL VARIATION<br>COOLING CAPACITY<br>ELECTRICAL DESIGNATION | RJNL-<br>B<br>090<br>C | RJNL-<br>B<br>120<br>C |
|------------------|-------|--|------------------------|------------------------|
| <b>FAN GROUP</b> |       |  |                        |                        |
| 52               | Stk   | Fan Motor (2)  | 51-42534-24            | 51-42534-29            |
|                  |       | Wiring Harness - Motor #1 (12 wire)  | 45-102706-11           | 45-102706-11           |
|                  |       | Wiring Harness - Motor #2 (5 wire)   | 45-102706-02           | 45-102706-02           |
| 53               | Stk   | Fan Blade (2)  | 70-42572-04            | 70-42502-03            |
| 60               | Stk   | Capacitor - Fan Motor (2)  | 43-100496-12           | 43-100496-41           |

| No.              | Notes | MODEL<br>TECHNICAL VARIATION<br>COOLING CAPACITY<br>ELECTRICAL DESIGNATION | RJNL-<br>B<br>090<br>D | RJNL-<br>B<br>120<br>D |
|------------------|-------|--|------------------------|------------------------|
| <b>FAN GROUP</b> |       |  |                        |                        |
| 52               | Stk   | Fan Motor (2)  | 51-42534-25            | 51-42534-28            |
|                  |       | Wiring Harness - Motor #1 (12 wire)  | 45-102706-11           | 45-102706-11           |
|                  |       | Wiring Harness - Motor #2 (5 wire)   | 45-102706-02           | 45-102706-02           |
| 53               | Stk   | Fan Blade (2)  | 70-42572-04            | 70-42502-03            |
| 60               | Stk   | Capacitor - Fan Motor (2)  | 43-100496-12           | 43-100496-12           |

| No.              | Notes | MODEL<br>TECHNICAL VARIATION<br>COOLING CAPACITY<br>ELECTRICAL DESIGNATION |  | RJNL-<br>B<br>090<br>Y |
|------------------|-------|--|--|------------------------|
| <b>FAN GROUP</b> |       |  |  |                        |
| 52               | Stk   | Fan Motor (2)  |  | 51-42534-26            |
|                  |       | Wiring Harness - Motor #1 (12 wire)  |  | 45-102706-11           |
|                  |       | Wiring Harness - Motor #2 (5 wire)   |  | 45-102706-02           |
| 53               | Stk   | Fan Blade (2)  |  | 70-42572-04            |
| 60               | Stk   | Capacitor - Fan Motor (2)  |  | 43-100496-12           |

| No.              | Notes | MODEL<br>TECHNICAL VARIATION<br>COOLING CAPACITY<br>ELECTRICAL DESIGNATION |  |  | RJNL-<br>B<br>180<br>C |
|------------------|-------|--|--|--|------------------------|
| <b>FAN GROUP</b> |       |  |  |  |                        |
| 52               | Stk   | Fan Motor  |  |  | 51-42534-24<br>(4)     |
|                  |       | Wiring Harness - Motor #1 & #4   |  |  | 45-42522-71            |
|                  |       | Wiring Harness - Motor #2 & #5   |  |  | N/A                    |
|                  |       | Wiring Harness - Motor #3 & #6   |  |  | 45-42522-69            |
| 53               | Stk   | Fan Blade  |  |  | 70-42572-04<br>(4)     |
| 60               | Stk   | Run Capacitor  |  |  | 43-100496-12<br>(4)    |

| No.              | Notes | MODEL<br>TECHNICAL VARIATION<br>COOLING CAPACITY<br>ELECTRICAL DESIGNATION |  |  | RJNL-<br>B<br>180<br>D |
|------------------|-------|--|--|--|------------------------|
| <b>FAN GROUP</b> |       |  |  |  |                        |
| 52               | Stk   | Fan Motor  |  |  | 51-42534-25<br>(4)     |
|                  |       | Wiring Harness - Motor #1 & #4   |  |  | 45-42522-71            |
|                  |       | Wiring Harness - Motor #2 & #5   |  |  | N/A                    |
|                  |       | Wiring Harness - Motor #3 & #6   |  |  | 45-42522-69            |
| 53               | Stk   | Fan Blade  |  |  | 70-42572-04<br>(4)     |
| 60               | Stk   | Run Capacitor  |  |  | 43-100496-12<br>(4)    |

| No.              | Notes | MODEL<br>TECHNICAL VARIATION<br>COOLING CAPACITY<br>ELECTRICAL DESIGNATION |  |  | RJNL-<br>B<br>180<br>Y |
|------------------|-------|--|--|--|------------------------|
| <b>FAN GROUP</b> |       |  |  |  |                        |
| 52               | Stk   | Fan Motor  |  |  | 51-42534-26<br>(4)     |
|                  |       | Wiring Harness - Motor #1 & #4   |  |  | 45-42522-71            |
|                  |       | Wiring Harness - Motor #2 & #5   |  |  | N/A                    |
|                  |       | Wiring Harness - Motor #3 & #6   |  |  | 45-42522-69            |
| 53               | Stk   | Fan Blade  |  |  | 70-42572-04<br>(4)     |
| 60               | Stk   | Run Capacitor  |  |  | 43-100496-12<br>(4)    |

| No.                                       | Notes | MODEL<br>TECHNICAL VARIATION<br>COOLING CAPACITY<br>DRIVE PACKAGE       | RJNL-<br>B<br>090<br>L | RJNL-<br>B<br>120<br>L |
|---|-------|---|------------------------|------------------------|
| <b>BLOWER ASSEMBLY GROUP - BELT DRIVE</b> |       |   |                        |                        |
| 64  | Stk   | Blower Housing Assembly (Includes Blower Housing and items 65,66,67,68) | AS-90757-01            | AS-90757-01            |
| 65  | Stk   | Blower Wheel  | 70-42540-02            | 70-42540-02            |
| 66  |       | Bearing Frame Tri-Arm (2)   | 70-42540-05            | 70-42540-05            |
| 67  |       | Bearing with Bearing Lock (2)   | 70-41854-02            | 70-41854-02            |
| 68  | Stk   | Blower Shaft  | 70-42540-04            | 70-42540-04            |
| 69  |       | Blower Mounting Angles (2)  | AE-90708-01            | AE-90708-01            |
|   |       | Blower Angle Stop   | AE-90709-02            | AE-90709-02            |
| 70  |       | Motor Mount   | AS-90824-01            | AS-90824-01            |
| 71  | Stk   | Blower Motor - C/D Voltages   | 51-42536-01            | 51-42536-01            |
| 71  | Stk   | Blower Motor - Y Voltage  | 51-42536-02            | N/A                    |
| 72  | Stk   | Variable Sheave   | 71-42538-02            | 71-42538-02            |
| 73  | Stk   | Belt  | 71-40438-30            | 71-40438-27            |
| 74  | Stk   | Fixed Sheave  | 71-100774-05           | 71-100774-02           |
|   |       | Key   | 94-42551-09            | 94-42551-09            |
|   | Stk   | Bushing for Sheave w/Screws   | 71-100773-01           | 71-100773-01           |

| No.                                       | Notes | MODEL<br>TECHNICAL VARIATION<br>COOLING CAPACITY<br>DRIVE PACKAGE       | RJNL-<br>B<br>090<br>M | RJNL-<br>B<br>120<br>M |
|---|-------|---|------------------------|------------------------|
| <b>BLOWER ASSEMBLY GROUP - BELT DRIVE</b> |       |   |                        |                        |
| 64  | Stk   | Blower Housing Assembly (Includes Blower Housing and items 65,66,67,68) | AS-90757-01            | AS-90757-01            |
| 65  | Stk   | Blower Wheel  | 70-42540-02            | 70-42540-02            |
| 66  |       | Bearing Frame Tri-Arm (2)   | 70-42540-05            | 70-42540-05            |
| 67  |       | Bearing with Bearing Lock (2)   | 70-41854-02            | 70-41854-02            |
| 68  | Stk   | Blower Shaft  | 70-42540-04            | 70-42540-04            |
| 69  |       | Blower Mounting Angles (2)  | AE-90708-01            | AE-90708-01            |
|   |       | Blower Angle Stop   | AE-90709-02            | AE-90709-02            |
| 70  |       | Motor Mount   | AE-90710-04            | AE-90710-04            |
| 71  | Stk   | Blower Motor - C/D Voltages   | 51-42536-01            | 51-42537-01            |
| 71  | Stk   | Blower Motor - Y Voltage  | 51-42536-02            | N/A                    |
| 72  | Stk   | Variable Sheave   | 71-42538-02            | 71-42538-02            |
| 73  | Stk   | Belt  | 71-40438-27            | 71-40438-23            |
| 74  | Stk   | Fixed Sheave  | 71-100774-02           | 71-100774-04           |
|   |       | Key   | 94-42551-09            | 94-42551-09            |
|   | Stk   | Bushing for Sheave w/Screws   | 71-100773-01           | 71-100773-01           |

| No.                                       | Notes | MODEL<br>TECHNICAL VARIATION<br>COOLING CAPACITY<br>DRIVE PACKAGE       | RJNL-<br>B<br>090<br>N |  |
|---|-------|---|------------------------|--|
| <b>BLOWER ASSEMBLY GROUP - BELT DRIVE</b> |       |   |                        |  |
| 64  | Stk   | Blower Housing Assembly (Includes Blower Housing and items 65,66,67,68) | AS-90757-01            |  |
| 65  | Stk   | Blower Wheel  | 70-42540-02            |  |
| 66  |       | Bearing Frame Tri-Arm (2)   | 70-42540-05            |  |
| 67  |       | Bearing with Bearing Lock (2)   | 70-41854-02            |  |
| 68  | Stk   | Blower Shaft  | 70-42540-04            |  |
| 69  |       | Blower Mounting Angles (2)  | AE-90708-01            |  |
|   |       | Blower Angle Stop   | AE-90709-02            |  |
| 70  |       | Motor Mount   | AE-90710-04            |  |
| 71  | Stk   | Blower Motor - C/D Voltages   | 51-42537-01            |  |
| 71  | Stk   | Blower Motor - Y Voltage  | 51-42537-02            |  |
| 72  | Stk   | Variable Sheave   | 71-42538-02            |  |
| 73  | Stk   | Belt  | 71-40438-23            |  |
| 74  | Stk   | Fixed Sheave  | 71-100774-04           |  |
|   |       | Key   | 94-42551-09            |  |
|   | Stk   | Bushing for Sheave w/Screws   | 71-100773-01           |  |

| No.                                       | Notes | MODEL<br>TECHNICAL VARIATION<br>COOLING CAPACITY<br>DRIVE PACKAGE |  |  | RJNL-<br>B<br>180<br>L |
|---|-------|---|--|--|------------------------|
| <b>BLOWER ASSEMBLY GROUP - BELT DRIVE</b> |       |   |  |  |                        |
| 64  | Stk   | Blower Assembly (includes Bearing Frame and Blower Wheel) (2)     |  |  | AS-90757-06            |
| 65  | Stk   | Blower Wheel (2)  |  |  | 70-42564-02            |
| 66  |       | Bearing Frame Tri-Arm (4)   |  |  | 70-42284-04            |
| 67  |       | Bearing with Bearing Lock (4)                                     |  |  | 70-41854-02            |
| 68  | Stk   | Blower Shaft  |  |  | 70-42564-03            |
| 69  |       | Blower Connector Angles (3)                                       |  |  | AE-90798-01            |
| 70  |       | Motor Mount   |  |  | AE-90710-03            |
| 71  | Stk   | Blower Motor - C/D Voltages                                       |  |  | 51-42537-01            |
| 71  | Stk   | Blower Motor - Y Voltage  |  |  | 51-42537-02            |
| 72  | Stk   | Variable Sheave   |  |  | 71-42538-02            |
| 73  | Stk   | Belt  |  |  | 71-40438-43            |
| 74a                                       | Stk   | Fixed Sheave  |  |  | 71-100774-08           |
| 74b                                       |       | Key   |  |  | 94-42551-09            |
| 74c                                       | Stk   | Bushing for Sheave w/Screws                                       |  |  | 71-100773-01           |

| No.                                       | Notes | MODEL<br>TECHNICAL VARIATION<br>COOLING CAPACITY<br>DRIVE PACKAGE |  |  | RJNL-<br>B<br>180<br>M |
|---|-------|---|--|--|------------------------|
| <b>BLOWER ASSEMBLY GROUP - BELT DRIVE</b> |       |   |  |  |                        |
| 64  | Stk   | Blower Assembly (includes Bearing Frame and Blower Wheel) (2)     |  |  | AS-90757-06            |
| 65  | Stk   | Blower Wheel (2)  |  |  | 70-42564-02            |
| 66  |       | Bearing Frame Tri-Arm (4)   |  |  | 70-42284-04            |
| 67  |       | Bearing with Bearing Lock (4)                                     |  |  | 70-41854-02            |
| 68  | Stk   | Blower Shaft  |  |  | 70-42564-03            |
| 69  |       | Blower Connector Angles (3)                                       |  |  | AE-90798-01            |
| 70  |       | Motor Mount   |  |  | AE-90710-03            |
| 71  | Stk   | Blower Motor - C/D Voltages                                       |  |  | 51-102826-06           |
| 71  | Stk   | Blower Motor - Y Voltage  |  |  | 51-102826-08           |
| 72  | Stk   | Variable Sheave   |  |  | 71-40427-04            |
| 73  | Stk   | Belt  |  |  | 71-40438-46            |
| 74a                                       | Stk   | Fixed Sheave  |  |  | 71-100774-08           |
| 74b                                       |       | Key   |  |  | 94-42551-09            |
| 74c                                       | Stk   | Bushing for Sheave w/Screws                                       |  |  | 71-100773-01           |

| No.                           | Notes | MODEL<br>TECHNICAL VARIATION<br>COOLING CAPACITY | RJNL-<br>B<br>090   | RJNL-<br>B<br>120   |
|-------------------------------|-------|--|---------------------|---------------------|
| <b>COIL GROUP</b>             |       |  |                     |                     |
| <b>EVAPORATOR COIL GROUP:</b> |       |  |                     |                     |
| 42                            | Stk   | Evaporator Coil                                  | AS-90656-73         | AS-90656-78         |
|                               | Stk   | Distributor Assembly                             | 83-102781-04        | 83-102781-05        |
|                               | Stk   | TXV  | 61-102211-27        | 61-102211-21        |
| 43                            | Stk   | Drain Pan - Removable                            | 68-102699-02        | 68-102699-02        |
| <b>FILTER PIECES:</b>         |       |  |                     |                     |
| 44                            |       | Filter Frame                                     | AE-90606-11         | AE-90606-12         |
| 45                            |       | Air Stop - Bottom                                | AE-102712-10        | AE-102712-10        |
| 46                            |       | Air Stop - Side                                  | AE-102712-06        | AE-102712-12        |
| 47                            |       | Top Air Stop Assembly                            | AS-90604-06         | AS-90604-06         |
| 48                            |       | Filter Channel (2)                               | AE-102712-08        | AE-102712-08        |
| 49                            |       | Filter Slide (2)                                 | AE-102712-11        | AE-102712-11        |
| 50                            |       | Filter (6)                                       | 54-42541-01         | 54-42541-01         |
| <b>CONDENSER COIL:</b>        |       |  |                     |                     |
| 37                            | Stk   | Condenser Coil                                   | AS-103040-01        | AS-103076-01        |
|                               | Stk   | Filter Drier - Liquid Line                       | 83-41714-06         | 83-103080-01        |
|                               |       | Strap - Filter Drier                             | AE-102132-01<br>(2) | AE-102132-01<br>(2) |
|                               | Stk   | High Pressure Control                            | 47-102290-01        | 47-102290-01        |
|                               | Stk   | Low Pressure Control                             | 47-102240-04        | 47-102240-04        |
| <b>REFRIGERATION:</b>         |       |  |                     |                     |
|                               | Stk   | Reversing Valve                                  | 61-102498-03        | 61-102498-08        |
|                               | Stk   | Solenoid Coil                                    | 61-101713-92        | 61-101713-92        |
|                               |       | Wiring Harness - Reversing Valve                 | 61-26149-01         | 61-26149-01         |

| No.                           | Notes | MODEL<br>TECHNICAL VARIATION<br>COOLING CAPACITY |  |  | RJNL-<br>B<br>180 |
|-------------------------------|-------|--|--|--|-------------------|
| <b>COIL GROUP</b>             |       |  |  |  |                   |
| <b>EVAPORATOR COIL GROUP:</b> |       |  |  |  |                   |
| 40                            |       | Air Flow Panel                                   |  |  | AS-90828-02A      |
| 42                            | Stk   | Complete Coil - Indoor                           |  |  | AS-103301-02      |
|                               | Stk   | TXV (2)  |  |  | 61-102211-30      |
| 43                            | Stk   | Drain Pan - Removable                            |  |  | 68-102699-01      |
| <b>FILTER PIECES:</b>         |       |  |  |  |                   |
| 44                            |       | Filter Frame                                     |  |  | AE-90606-10       |
| 45                            | 1     | Air Stop - Bottom (Before F1811) - See Note 1    |  |  | AE-102712-05      |
| 45                            |       | Air Stop - Bottom (After F1811)                  |  |  | AE-102712-17      |
| 46                            | 1     | Air Stop - Side (Before F1811) - See Note 1      |  |  | AE-102712-01      |
| 46                            |       | Air Stop - Side (After F1811)                    |  |  | AE-102712-14      |
| 47                            |       | Top Air Stop Assembly                            |  |  | AS-90604-04       |
| 48                            | 1     | Filter Channel (2) (Before F1811) - See Note 1   |  |  | AE-102712-03      |
| 48                            |       | Filter Channel (2) (After F1811)                 |  |  | AE-102712-16      |
| 49                            | 1     | Filter Slide (2) (Before F1811) - See Note 1     |  |  | AE-102712-02      |
| 49                            |       | Filter Slide (2) (After F1811)                   |  |  | AE-102712-15      |
| 50                            |       | Filter - 20 in. x 25 in. x 2 in. (8)             |  |  | 54-42541-04       |
| <b>CONDENSER COIL:</b>        |       |  |  |  |                   |
| 37                            | Stk   | Condenser Coil Assemblby (2)                     |  |  | AS-103318-02      |
| 38a                           |       | Air Stop - Front                                 |  |  | AE-90706-13       |
| 38b                           |       | Corner Brace - Top Front                         |  |  | AS-90706-16A      |
| 38c                           |       | Post - Front                                     |  |  | AS-90706-14A      |
| 39a                           |       | Air Stop - Rear                                  |  |  | AE-90706-12       |
| 39b                           |       | Corner Brace - Top Rear                          |  |  | AS-90706-17A      |
| 39c                           |       | Post - Rear                                      |  |  | AS-90706-15A      |
| 41                            |       | Air Stop- Top Right                              |  |  | AS-90753-08A      |
| 41a                           |       | Top Support - Inner Condenser Coil (2)           |  |  | AE-90612-21       |
| 41b                           |       | Top Support - Outer Condenser Coil               |  |  | AE-90612-20       |
| 41c                           |       | Top Support - Condenser Bulkhead                 |  |  | AE-90612-18       |
|                               |       | Filter Drier - Liquid Line (2)                   |  |  | 83-103080-01      |
|                               | Stk   | High Pressure Control (2)                        |  |  | 47-102290-01      |
|                               | Stk   | Low Pressure Control (2)                         |  |  | 47-102240-04      |
| <b>REFRIGERATION:</b>         |       |  |  |  |                   |
|                               | Stk   | Reversing Valve                                  |  |  | 61-102498-03      |
|                               | Stk   | Solenoid Coil                                    |  |  | 61-101713-92      |
|                               |       | Wiring Harness - Reversing Valve                 |  |  | 61-26149-01       |

|     |       |  |                        |                        |
|-----|-------|--|------------------------|------------------------|
| No. | Notes | MODEL<br>TECHNICAL VARIATION<br>COOLING CAPACITY<br>ELECTRICAL DESIGNATION | RJNL-<br>B<br>090<br>C | RJNL-<br>B<br>120<br>C |
|     |       | <b>COMPRESSOR GROUP</b>  |                        |                        |
|     |       | Compressor ID:   | 7974                   | 7985                   |
| 75  | Stk   | Compressor   | 55-23156-20S           | 55-102471-01S          |
|     | Stk   | Crankcase Heater   | 44-17402-10            | 44-17402-17            |
|     |       | Wiring Harness - Compressor  | 45-102706-12           | 45-102706-13           |

|     |       |  |                        |                        |
|-----|-------|--|------------------------|------------------------|
| No. | Notes | MODEL<br>TECHNICAL VARIATION<br>COOLING CAPACITY<br>ELECTRICAL DESIGNATION | RJNL-<br>B<br>090<br>D | RJNL-<br>B<br>120<br>D |
|     |       | <b>COMPRESSOR GROUP</b>  |                        |                        |
|     |       | Compressor ID:   | 7975                   | 7986                   |
| 75  | Stk   | Compressor   | 55-23156-21S           | 55-102471-04S          |
|     | Stk   | Crankcase Heater   | 44-17402-11            | 44-17402-18            |
|     |       | Wiring Harness - Compressor  | 45-102706-12           | 45-102706-13           |

|     |       |  |  |                        |
|-----|-------|--|--|------------------------|
| No. | Notes | MODEL<br>TECHNICAL VARIATION<br>COOLING CAPACITY<br>ELECTRICAL DESIGNATION |  | RJNL-<br>B<br>090<br>Y |
|     |       | <b>COMPRESSOR GROUP</b>  |  |                        |
|     |       | Compressor ID:   |  | 7976                   |
| 75  | Stk   | Compressor   |  | 55-23156-22S           |
|     | Stk   | Crankcase Heater   |  | 44-17402-12            |
|     |       | Wiring Harness - Compressor  |  | 45-102706-12           |

|                         |              |  |  |                |                                  |
|-------------------------|--------------|--|--|----------------|----------------------------------|
| <b>No.</b>              | <b>Notes</b> | <b>MODEL<br/>TECHNICAL VARIATION<br/>COOLING CAPACITY<br/>ELECTRICAL DESIGNATION</b> |  |                | <b>RJNL-<br/>B<br/>180<br/>C</b> |
| <b>COMPRESSOR GROUP</b> |              |  |  |                |                                  |
|                         |              | <b>Compressor:</b>   |  |                | <b>8327</b>                      |
| 75                      | Stk          | Compressor   |  |                | 55-23156-20S                     |
| 75                      | Stk          | Compressor   |  |                | 55-23156-20S                     |
|                         |              | Plug Harness - Compressor #1   |  |                | 45-42522-73                      |
|                         |              | Plug Harness - Compressor #2   |  |                | 45-42522-72                      |
|                         |              | High Pressure Control  |  | See Coil Group |                                  |
|                         |              | Low Pressure Control   |  | See Coil Group |                                  |

|                         |              |  |  |                |                                  |
|-------------------------|--------------|--|--|----------------|----------------------------------|
| <b>No.</b>              | <b>Notes</b> | <b>MODEL<br/>TECHNICAL VARIATION<br/>COOLING CAPACITY<br/>ELECTRICAL DESIGNATION</b> |  |                | <b>RJNL-<br/>B<br/>180<br/>D</b> |
| <b>COMPRESSOR GROUP</b> |              |  |  |                |                                  |
|                         |              | <b>Compressor:</b>   |  |                | <b>8328</b>                      |
| 75                      | Stk          | Compressor   |  |                | 55-23156-21S                     |
| 75                      | Stk          | Compressor   |  |                | 55-23156-21S                     |
|                         |              | Plug Harness - Compressor #1   |  |                | 45-42522-73                      |
|                         |              | Plug Harness - Compressor #2   |  |                | 45-42522-72                      |
|                         |              | High Pressure Control  |  | See Coil Group |                                  |
|                         |              | Low Pressure Control   |  | See Coil Group |                                  |

|                         |              |  |  |                |                                  |
|-------------------------|--------------|--|--|----------------|----------------------------------|
| <b>No.</b>              | <b>Notes</b> | <b>MODEL<br/>TECHNICAL VARIATION<br/>COOLING CAPACITY<br/>ELECTRICAL DESIGNATION</b> |  |                | <b>RJNL-<br/>B<br/>180<br/>Y</b> |
| <b>COMPRESSOR GROUP</b> |              |  |  |                |                                  |
|                         |              | <b>Compressor:</b>   |  |                | <b>8329</b>                      |
| 75                      | Stk          | Compressor   |  |                | 55-23156-22S                     |
| 75                      | Stk          | Compressor   |  |                | 55-23156-22S                     |
|                         |              | Plug Harness - Compressor #1   |  |                | 45-42522-73                      |
|                         |              | Plug Harness - Compressor #2   |  |                | 45-42522-72                      |
|                         |              | High Pressure Control  |  | See Coil Group |                                  |
|                         |              | Low Pressure Control   |  | See Coil Group |                                  |

| No.                | Notes | MODEL<br>TECHNICAL VARIATION<br>COOLING CAPACITY<br>ELECTRICAL DESIGNATION | RJNL-<br>B<br>090-120<br>C | RJNL-<br>B<br>090-120<br>D | RJNL-<br>B<br>090<br>Y |
|--------------------|-------|--|----------------------------|----------------------------|------------------------|
| <b>HEATER KITS</b> |       |  |                            |                            |                        |
|                    |       | Heater Kit - 15kW  | RXJJ-CC15C                 | RXJJ-CC15D                 | RXJJ-CC15Y             |
|                    |       | Heater Kit - 20kW  | RXJJ-CC20C                 | RXJJ-CC20D                 | RXJJ-CC20Y             |
|                    |       | Heater Kit - 30kW  | RXJJ-CC30C                 | RXJJ-CC30D                 | RXJJ-CC30Y             |
|                    |       | Heater Kit - 40kW  | RXJJ-CC40C                 | RXJJ-CC40D                 | RXJJ-CC40Y             |

| No.  | Notes | MODEL<br>TECHNICAL VARIATION<br>COOLING CAPACITY | RJNL-<br>B<br>180 | RJNL-<br>B<br>180 | RJNL-<br>B<br>180 | RJNL-<br>B<br>180 |
|--|-------|--|-------------------|-------------------|-------------------|-------------------|
| <b>ELECTRIC HEATER KITS - ELECTRICAL DESIGNATION C</b> |       |  |                   |                   |                   |                   |
|  |       | Electric Element Kits - Option                   | RXJJ-CE20C        | RXJJ-CE40C        | RXJJ-CE60C        | RXJJ-CE75C        |
| <b>ELECTRIC HEATER KITS - ELECTRICAL DESIGNATION D</b> |       |  |                   |                   |                   |                   |
|  |       | Electric Element Kits - Option                   | RXJJ-CE20D        | RXJJ-CE40D        | RXJJ-CE60D        | RXJJ-CE75D        |
| <b>ELECTRIC HEATER KITS - ELECTRICAL DESIGNATION Y</b> |       |  |                   |                   |                   |                   |
|  |       | Electric Element Kits - Option                   | RXJJ-CE20Y        | RXJJ-CE40Y        | RXJJ-CE60Y        | RXJJ-CE75Y        |

| No.                | Notes | MODEL<br>TECHNICAL VARIATION<br>COOLING CAPACITY | RJNL-<br>B<br>090-120 |
|--------------------|-------|--|-----------------------|
| <b>ACCESSORIES</b> |       |  |                       |
|                    |       | Carbon Dioxide Sensor                            | RXR-AR02              |
|                    |       | Dual Enthalpy Kit                                | RXR-AV02              |
|                    |       | Manual Fresh Air (Left Panel Mounted)            | RXR-KDA1              |
|                    |       | Motor Kit for RXR-KDA1                           | RXR-AW02              |
|                    |       | Manual Fresh Air (Left Panel Mounted)            | RXR-KDA1              |
|                    |       | Manual Fresh Air (Return Panel)                  | RXR-JDA1              |
|                    |       | Motorized Fresh Air (Return Panel)               | RXR-JDB1              |
|                    |       | Louver Kit - Outdoor Coil (090)                  | RXR-AAD01H            |
|                    |       | Louver Kit - Outdoor Coil (120)                  | RXR-AAD01J            |
|                    |       | Freeze Stat                                      | RXR-AM05              |
|                    |       | Non-Powered Convenience Outlet                   | RXR-AN01              |
|                    |       | Low Ambient Control Kit                          | RXR-A03               |

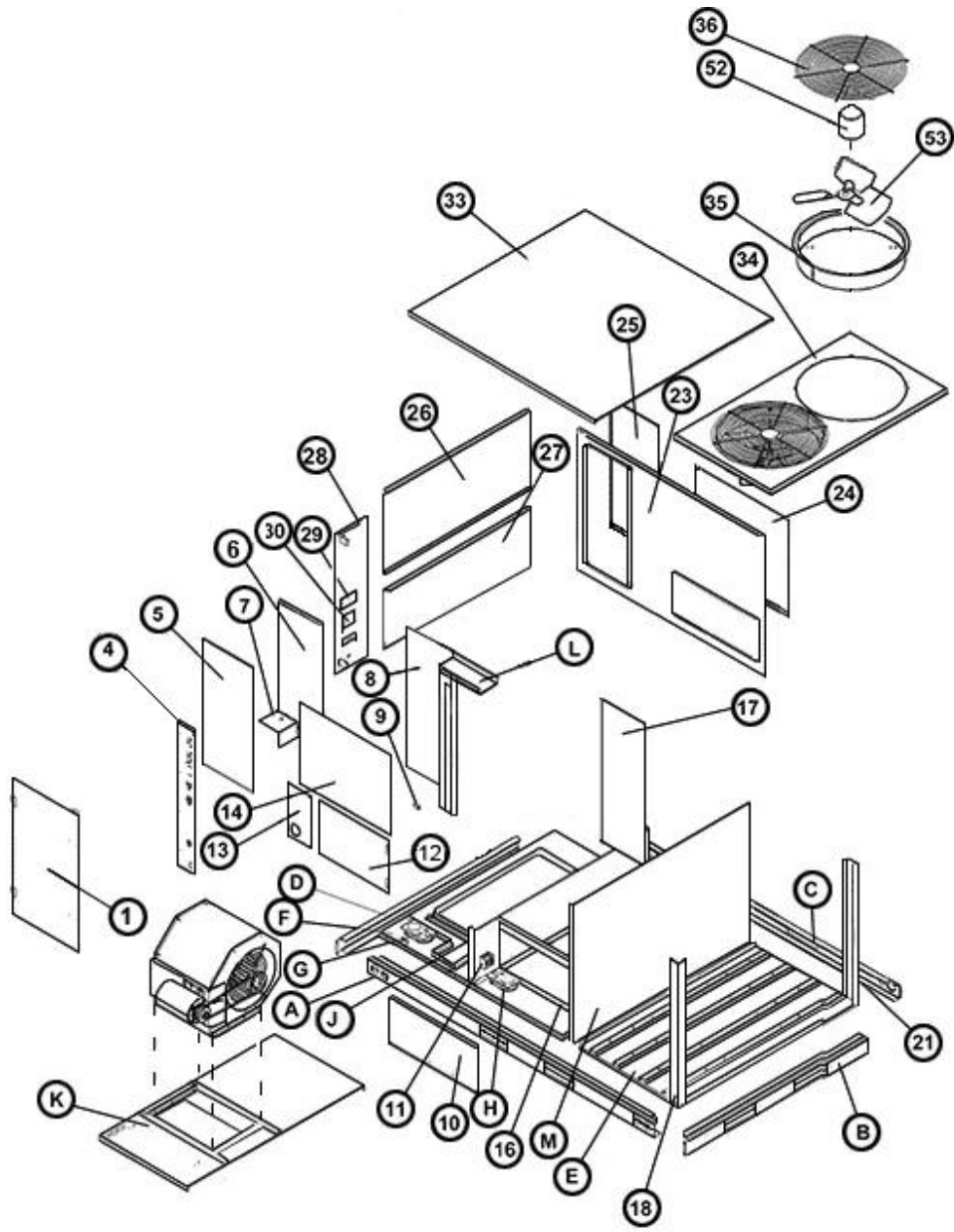
| No.                | Notes | MODEL<br>TECHNICAL VARIATION<br>COOLING CAPACITY | RJNL-<br>B<br>090-120 |
|--------------------|-------|--|-----------------------|
| <b>ECONOMIZERS</b> |       |  |                       |
|                    |       | Economizer - Single Enthalpy                     | RXR-PDCM3             |
|                    |       | Economizer - Single Enthalpy w/Smoke Detector    | RXR-SDCM3             |
|                    |       | Horizontal Economizer - Single Enthalpy          | RXR-RDCM3             |

| No.                  | Notes | MODEL<br>TECHNICAL VARIATION<br>COOLING CAPACITY | RJNL-<br>B<br>090-120 |
|----------------------|-------|--|-----------------------|
| <b>POWER EXHAUST</b> |       |  |                       |
|                      |       | Power Exhaust                                    | RXR-BFF02C            |
|                      |       | Power Exhaust                                    | RXR-BFF02D            |
|                      |       | Power Exhaust                                    | RXR-BFF02Y            |

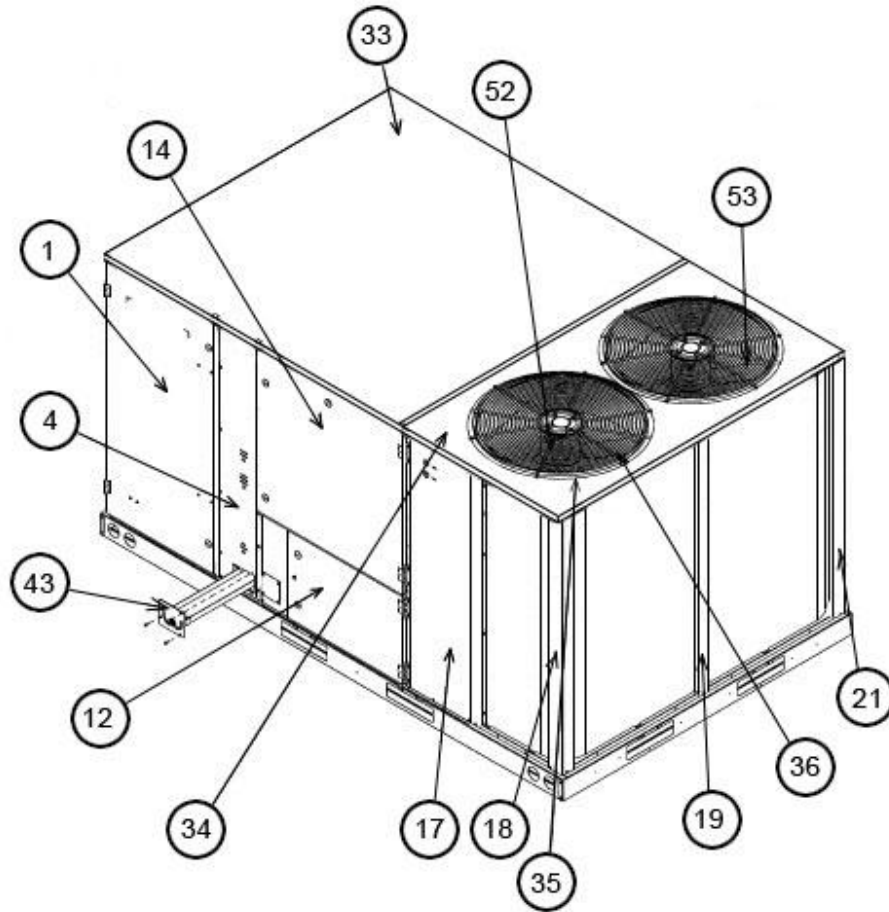
| No.                | Notes | MODEL<br>TECHNICAL VARIATION<br>COOLING CAPACITY | RJNL-<br>B<br>180 |
|--------------------|-------|--|-------------------|
| <b>ACCESSORIES</b> |       |  |                   |
|                    |       | Carbon Dioxide Sensor                            | RXRX-AR02         |
|                    |       | Dual Enthalpy Kit                                | RXRX-AV02         |
|                    |       | Manual Fresh Air Damper                          | RXRF-KFA1         |
|                    |       | Motorized Kit for RXRF-KFA1                      | RXRX-AW03         |
|                    |       | Freeze Stat Kit                                  | RXRX-AM05         |
|                    |       | Unwired Convenience Outlet                       | RXRX-AN01         |
|                    |       | Low Ambient Control Kit (1 Per Compressor)       | RXRZ-C02          |

| No.                | Notes | MODEL<br>TECHNICAL VARIATION<br>COOLING CAPACITY       | RJNL-<br>B<br>180 |
|--------------------|-------|--|-------------------|
| <b>ECONOMIZERS</b> |       |  |                   |
|                    |       | Downflow Economizer - Single Enthalpy                  | RXRD-PGCM3        |
|                    |       | Downflow Economizer - Single Enthalpy w/Smoke Detector | RXRD-SGCM3        |
|                    |       | Horizontal Economizer - Single Enthalpy                | RXRD-RGCM3        |

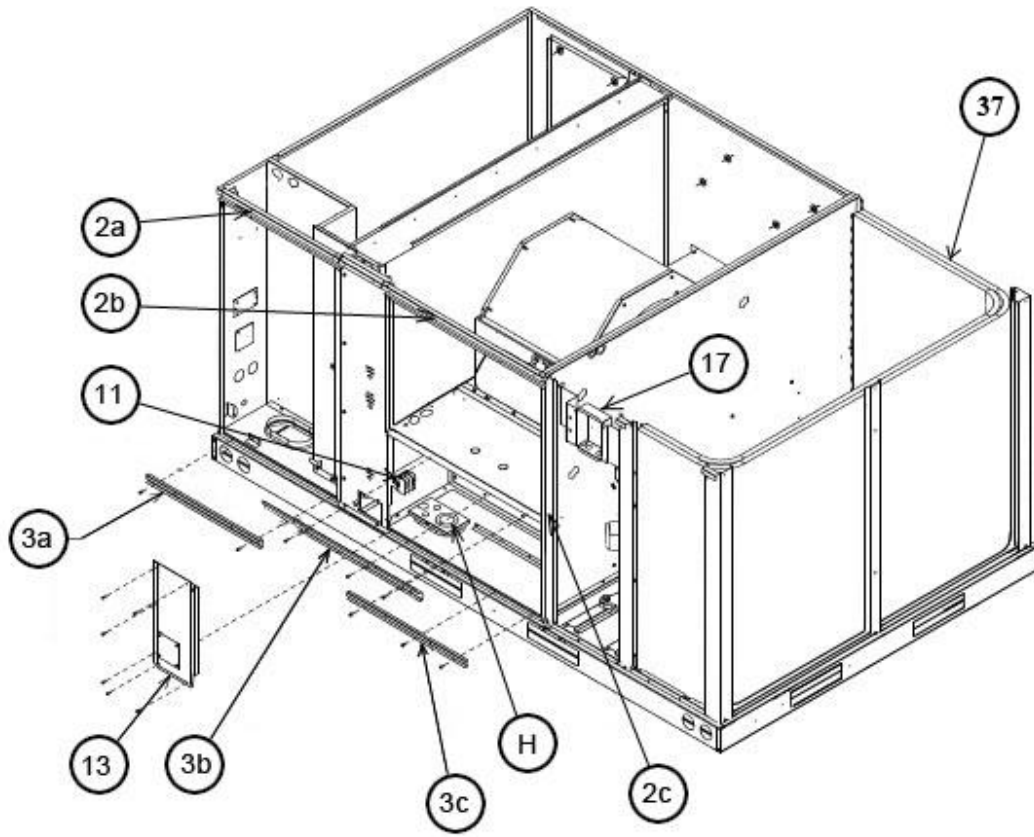
| No.                  | Notes | MODEL<br>TECHNICAL VARIATION<br>COOLING CAPACITY | RJNL-<br>B<br>180 |
|----------------------|-------|--|-------------------|
| <b>POWER EXHAUST</b> |       |  |                   |
|                      |       | Power Exhaust                                    | RXRX-BGF05C       |
|                      |       | Power Exhaust                                    | RXRX-BGF05D       |
|                      |       | Power Exhaust                                    | RXRX-BGF05Y       |



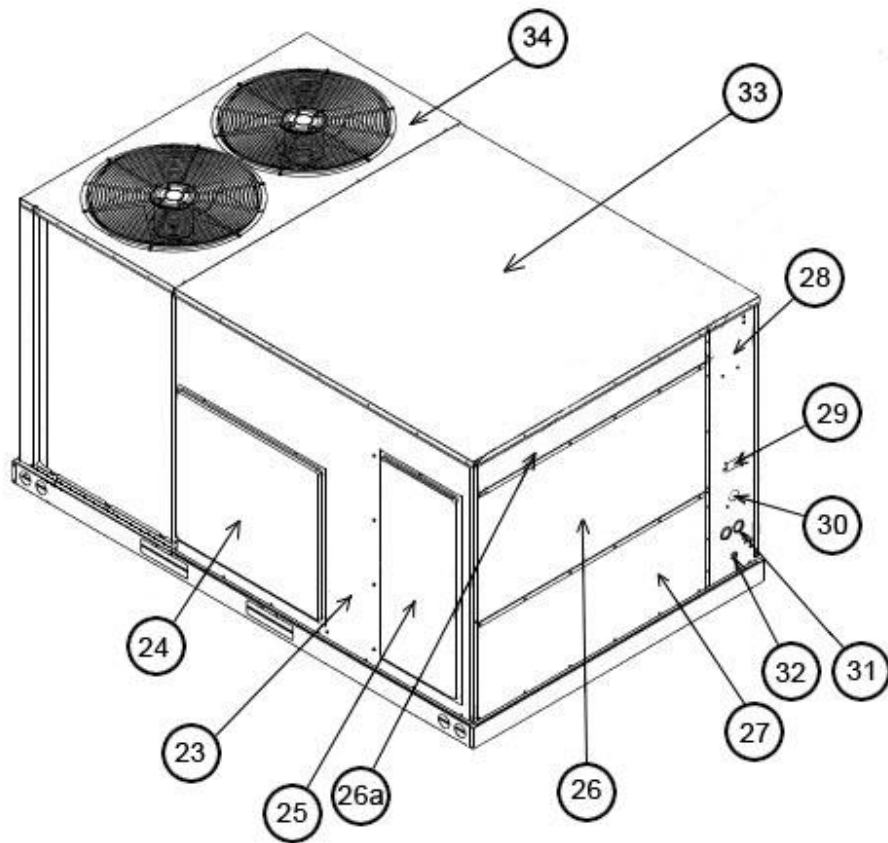
Exploded View 090-120



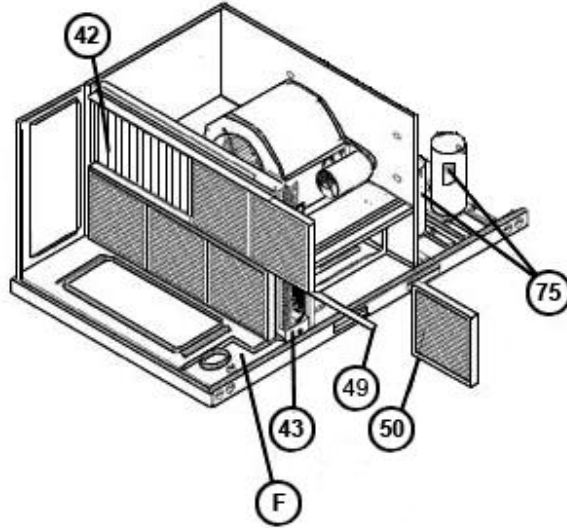
Exterior - Front 090-120



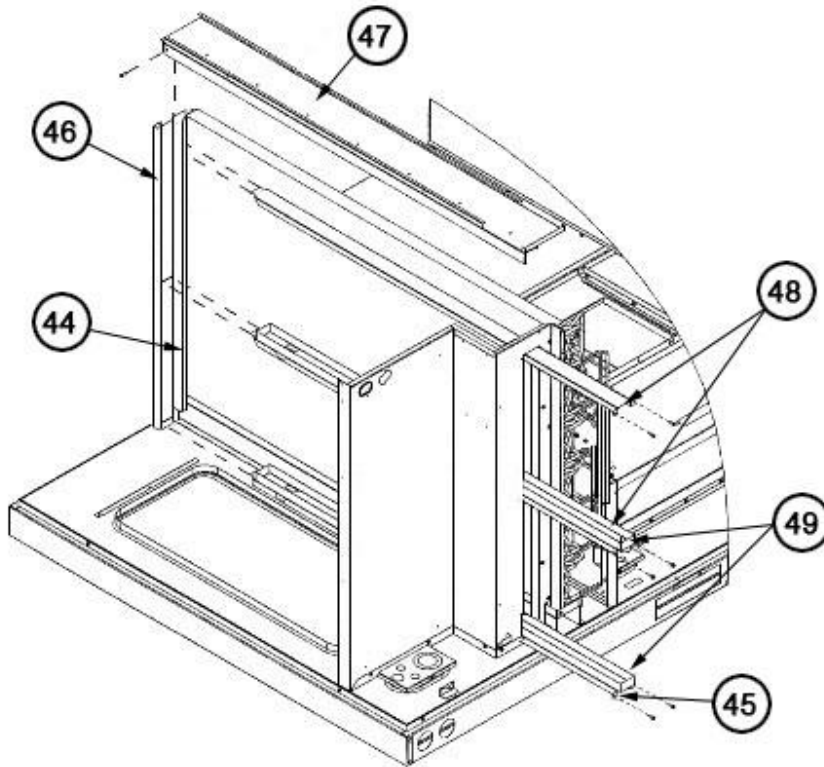
Front Panel Brackets 090-120



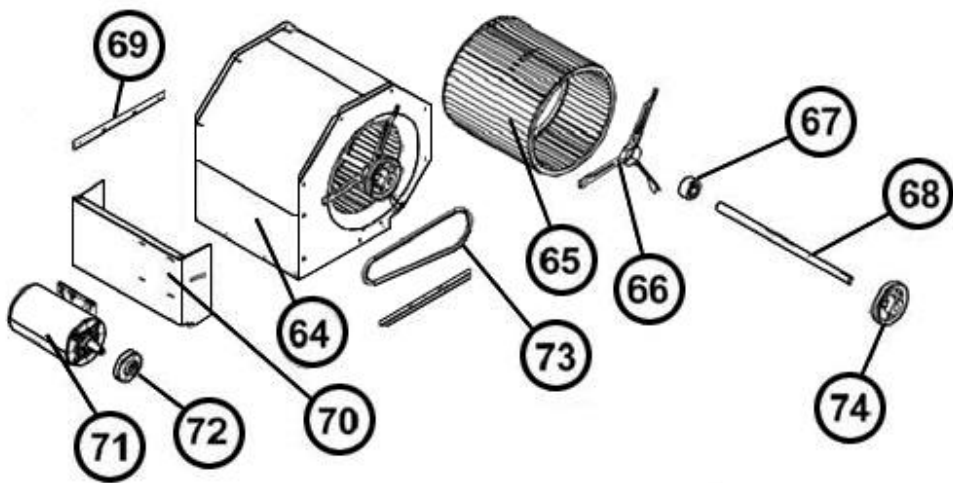
Exterior - Back 090-120



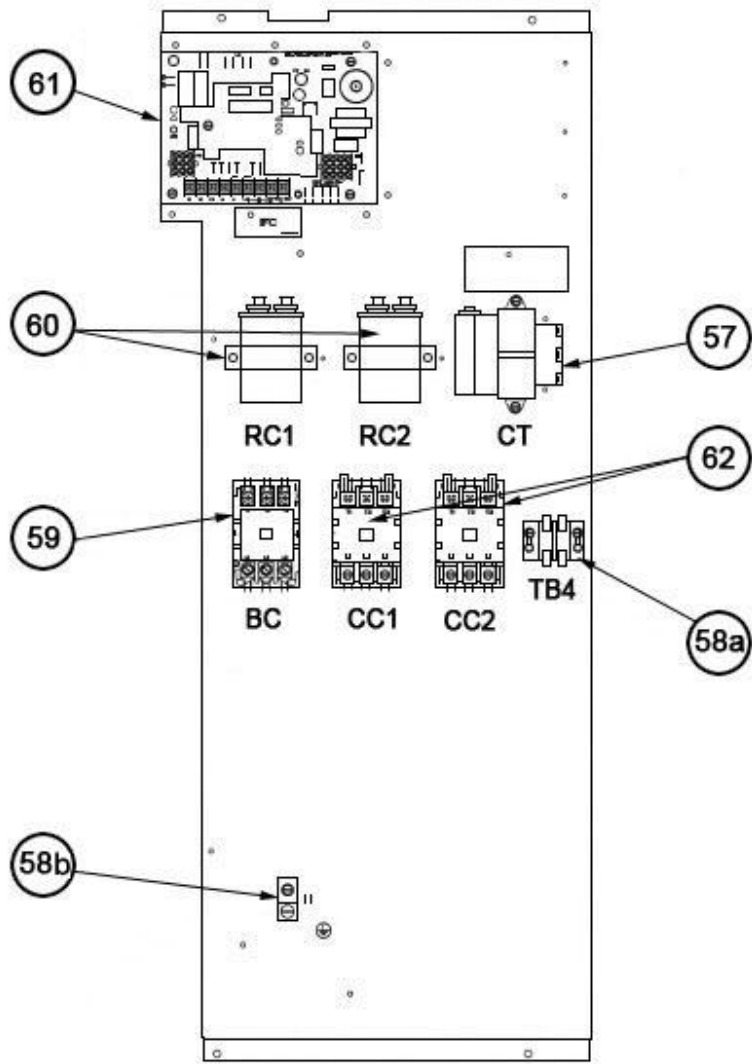
Filter-Coil Assembly 090-120



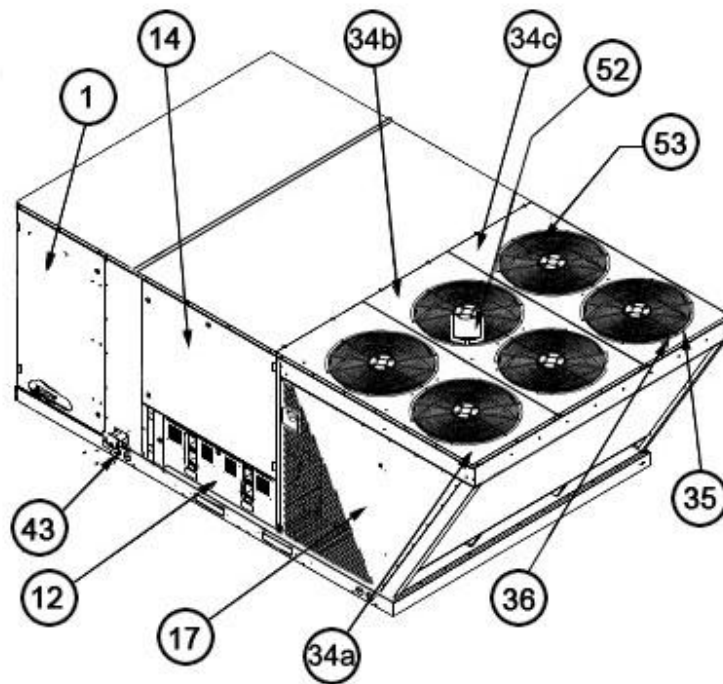
Filter Frame Assembly 090-120



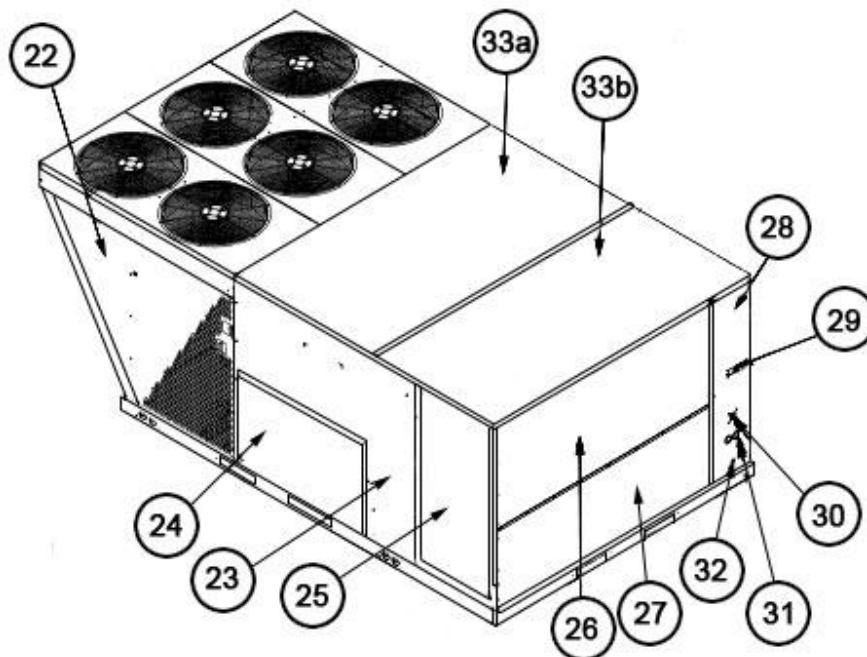
Blower Assembly 090-120



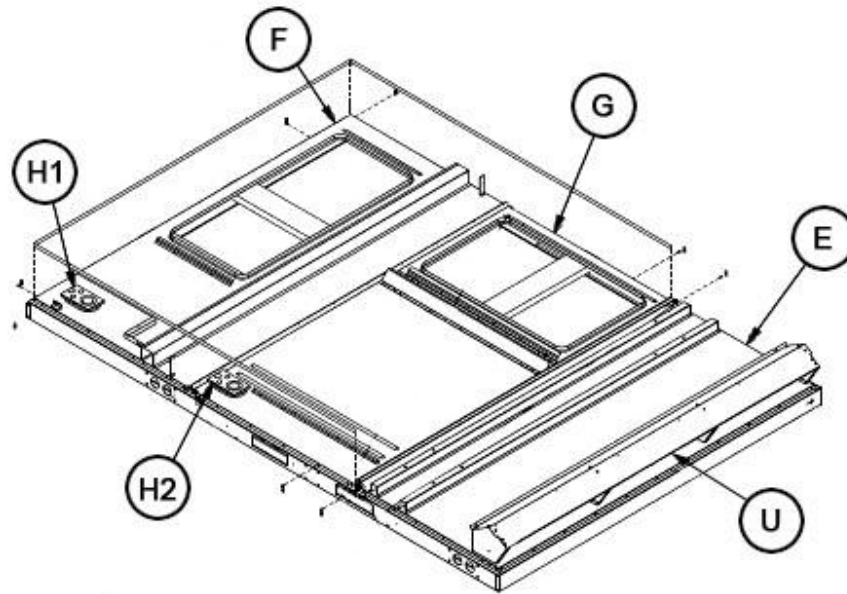
Control Box 090-120



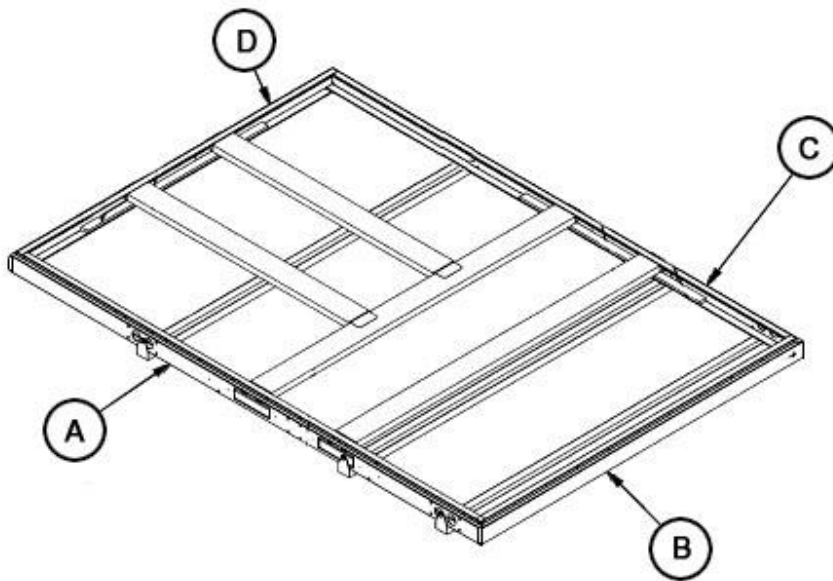
Exterior - Front 180



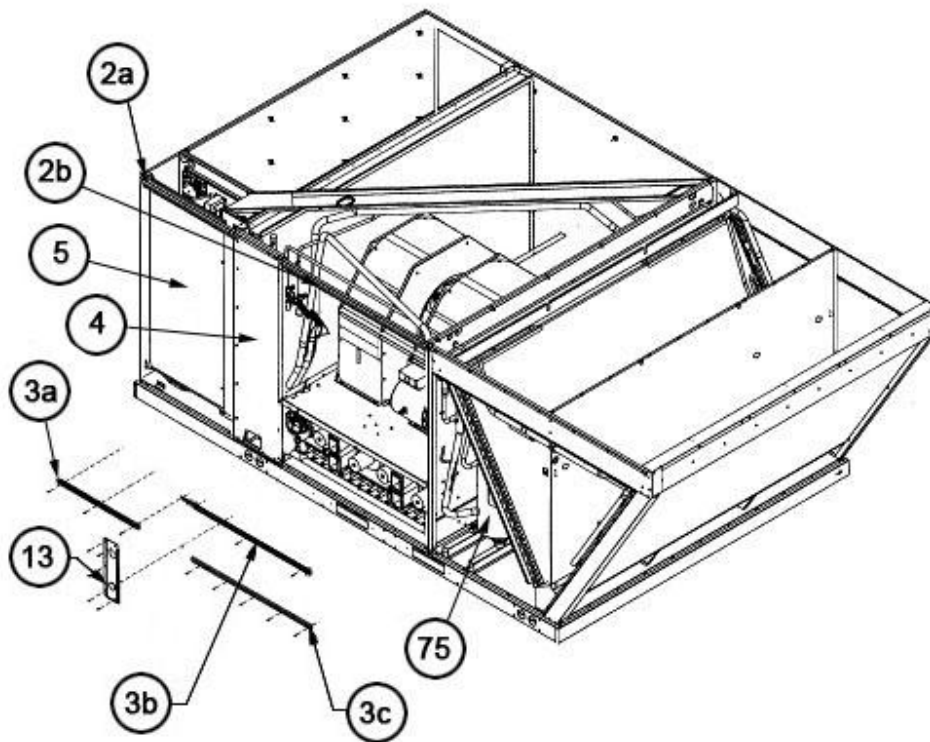
Exterior - Rear 180



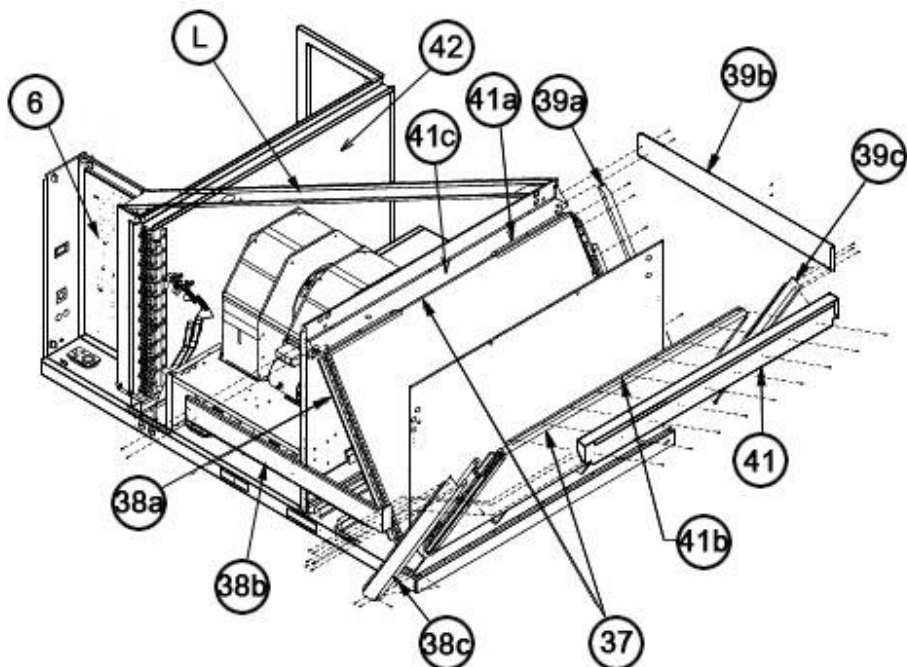
Base Pan Assembly 180



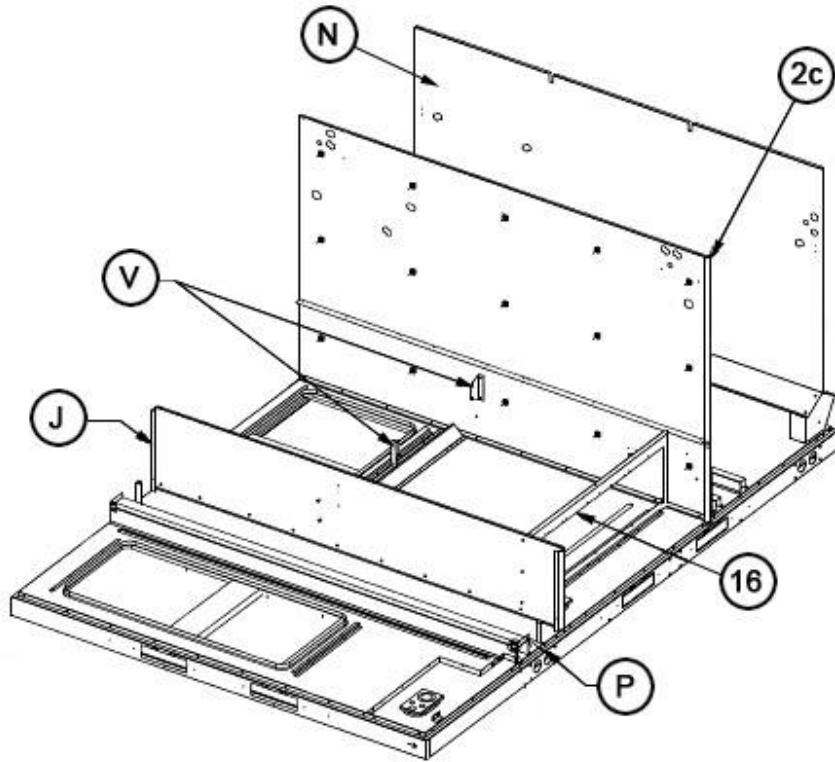
Base Rail Assembly 180



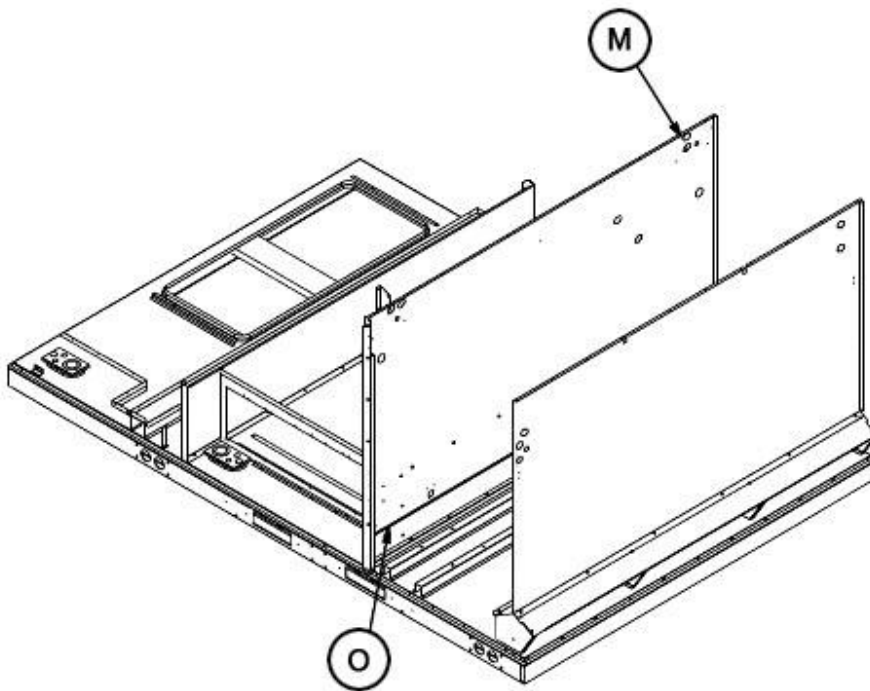
Front Panel Brackets 180



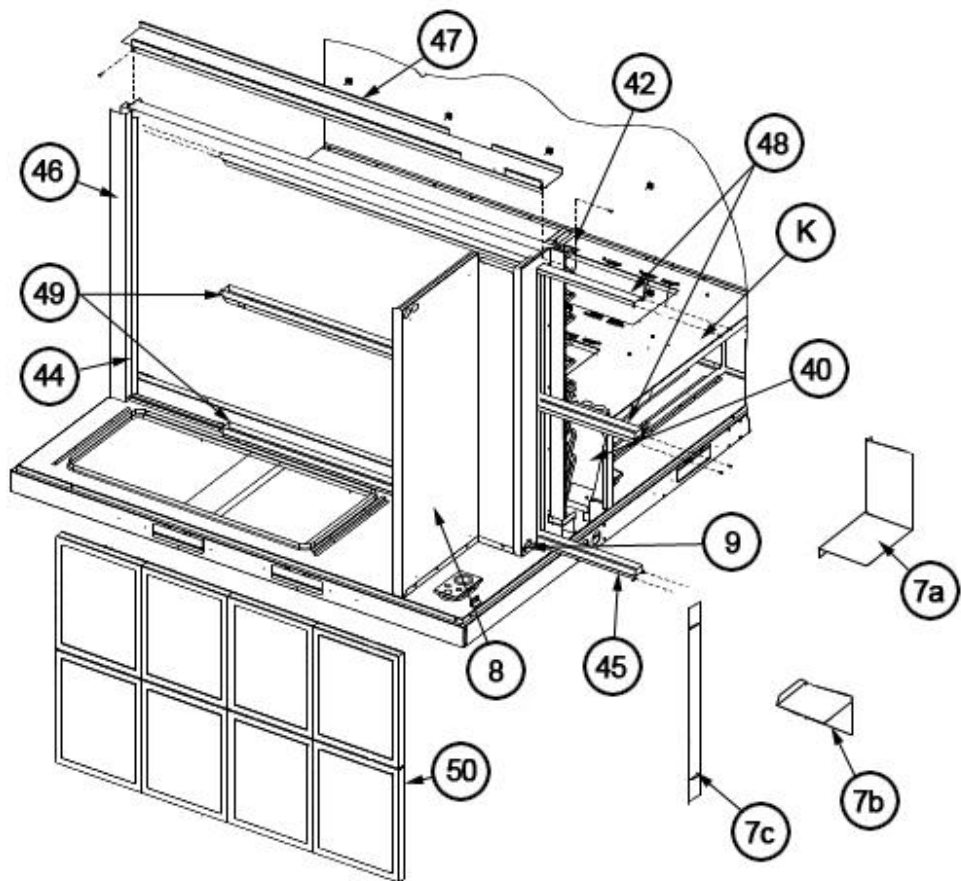
Interior - Coil 180



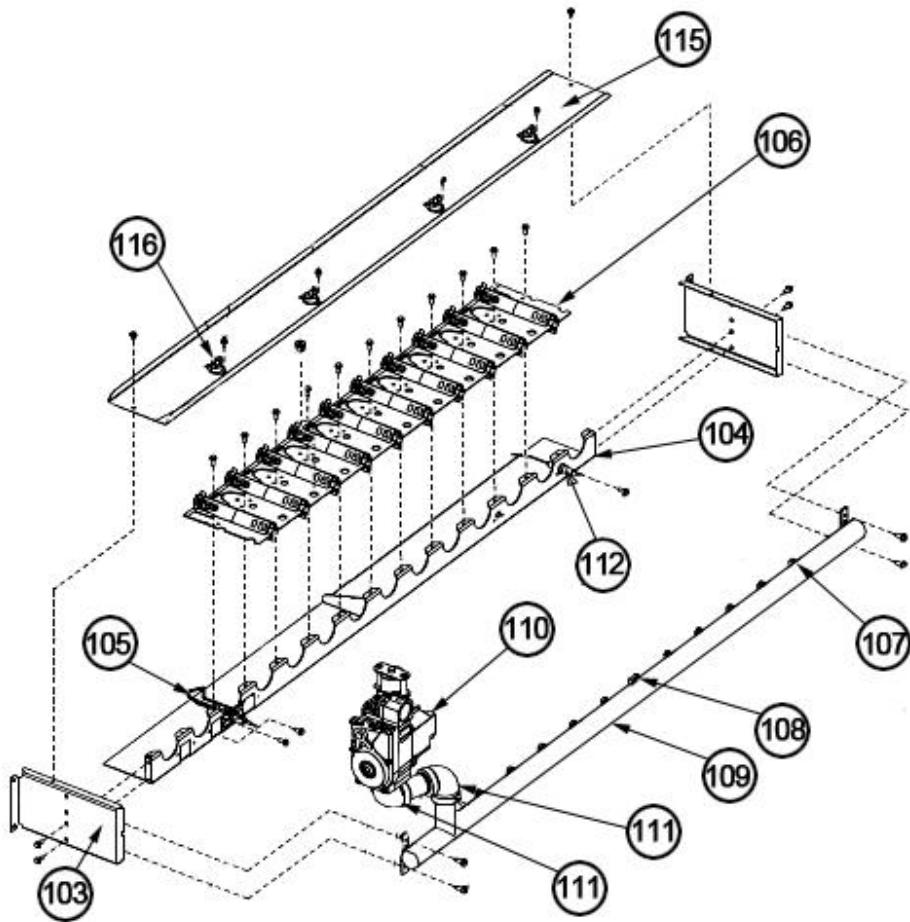
Heat Compartment 180



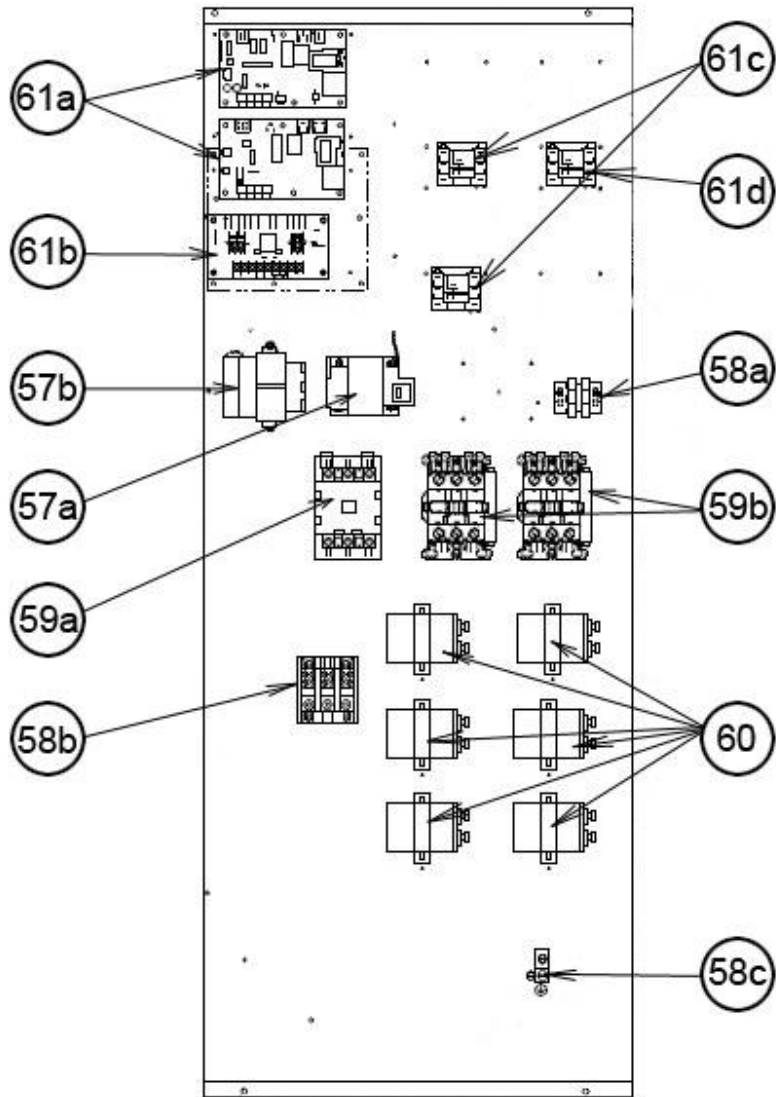
Condenser Bulkhead 180



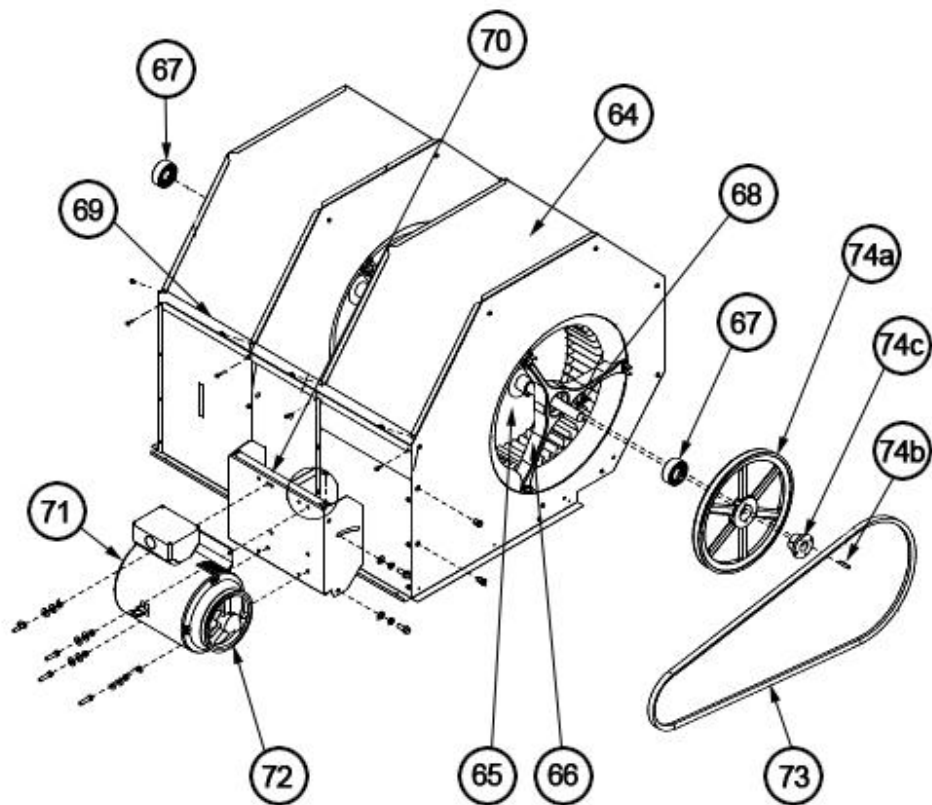
Filter Frame Assembly 180



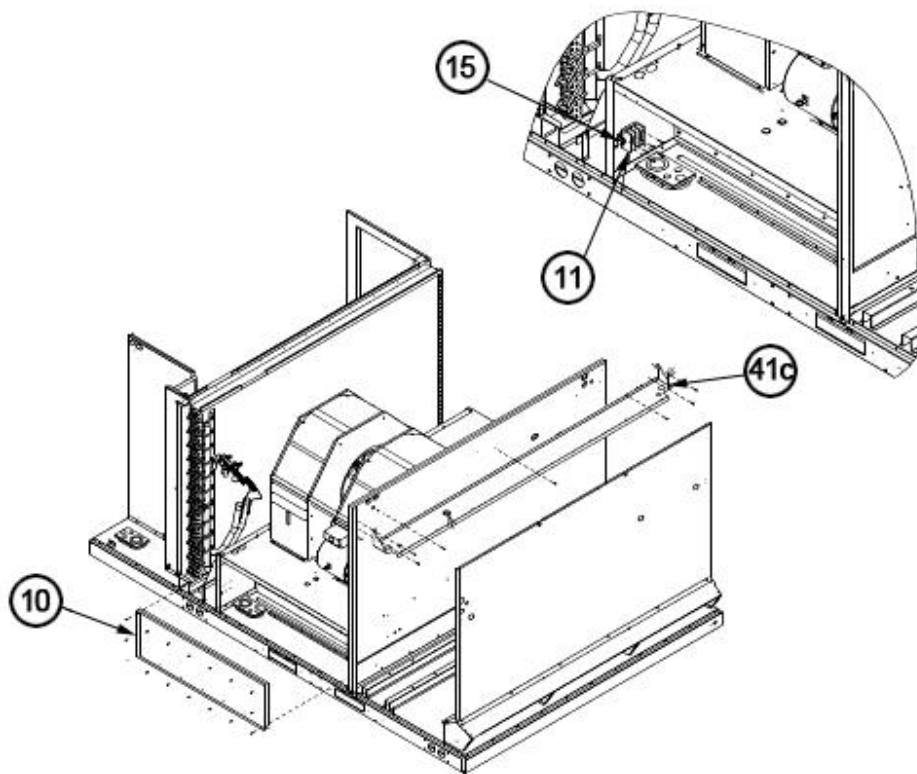
Burner Assembly 180



Control Box 180



Blower Assembly 180



Electric Heat Block-Off 180

# NOTES

Stk It is recommended that stock be maintained for this part.

N/A Not Applicable

- 1 Older (Before F1811) filter frame components are not individually compatible with newer (After F1811) filter frame components. Depending upon availability of older (Before F1811) components, it may be necessary to replace entire filter frame assembly (Air Stops - Bottom and Side, Filter Channels and Filter Slides) with the newer style (After F1811) components.

**DISCLAIMER:** This document is intended to provide general replacement parts information to aid qualified service personnel in the repair of these models. The complete Model and Serial Number of the unit under repair should be specified when selecting and ordering replacement parts. Specifications and illustrations are subject to change without notice. Document 92-42800-RJNL-B supersedes all previous parts lists for these models. See <http://www.rheempartslists.net/92-42800-RJNL-B> for the latest revision of this document. The manufacturer assumes no obligation for errors or omissions. Service personnel must verify the proper and safe operation of equipment after the replacement of any original components.