



Water Coolers



ON-A-WALL

P8M,P14M,PM

Suggested Specification

Cabinet finish shall be Sandstone powder coated paint on galvanized steel or brushed stainless steel. Cooling system shall use R-134a refrigerant. Shall be listed by Underwriters' Laboratories to U.S. and Canadian standards and conform to European Union Directives.

Models

P8M delivers 8 gph of chilled drinking water
P14M delivers 14 gph of chilled drinking water.
PM is a non-refrigerated fountain.

Standard Features

- > Waterways Are Lead-Free In Materials & Construction
- > Dial-A-Drink® Bubbler
- > Stainless Steel Top
- > Welded Heavy-Gauge Steel Frame
- > High-Efficiency Cooling Tank and Coil
- > Refrigerant R-134a
- > Product Certified to NSF/ANSI Standard 61, Annex G (AB1953)
- > Limited 5-year Warranty

Finishes

- > Standard Cabinet Finish: Sandstone powder coated paint on Galvanized Steel.
- > Optional finishes (at extra cost): Stainless Steel, Regency Bronze, optional powder coated finishes.



Components in these water coolers are lead free as defined by the Safe Water Act Amendments of 1986, and the Lead Contamination Control Act of 1988.



Certified to NSF/ANSI 61-G

Accessories

- > Trim Bezel to conceal wall surface discoloration when cooler is installed as a replacement.
- > Glass Fillers: Push handle (029603-004)
- > Glass Fillers: Push back (029603-005)
- > Glass Fillers: Push down (029603-006)
- > Kit 029137-002 is required for Field Installation for the above glass fillers (Except Models PLF8MH and Regency Bronze finish.)

Installation

- > Prior to roughing-in consult with local, state, and federal codes for proper mounting height.
- > Shipped with complete instructions and wall mounting bracket.
- > Removable panels provide easy access for installation.

Limited 5-Year Warranty (Continental limits of the United States and Canada): Five years on the sealed refrigeration system and most component parts. Detailed warranty certificate enclosed with each water cooler; sample available upon request.

Export Warranty: One year on the sealed refrigeration system and most component parts. Four-year replacement contract on sealed refrigeration system. Detailed warranty certificate enclosed with each drinking fountain; sample copy available upon request.

Product Certified to NSF/ANSI Standard 61, Annex G (weighted average lead content of $\leq 0.25\%$) and is in compliance with California's Health & Safety Code Section 116875 (commonly known as AB1953).

Models covered by this specification comply with all known Plumbing Codes. Listed by Underwriters' Laboratories to U.S. and Canadian standards and conform to European Union Directives.

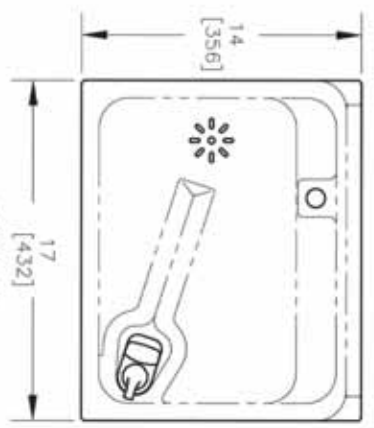
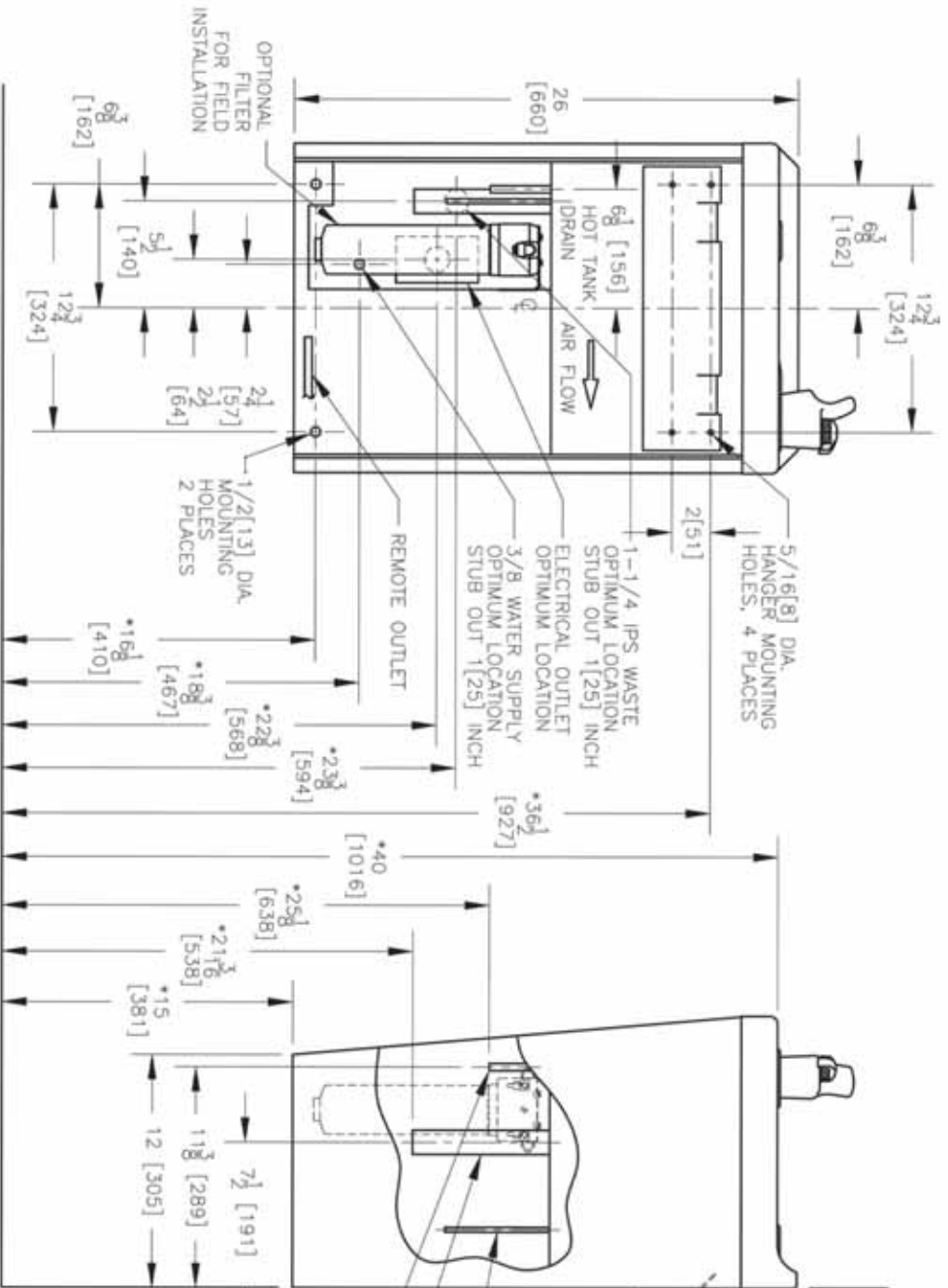
Model	50° F Drinking Water 90° F Ambient Air Temp*			Hot 'N Cold™ Model	115 Volts, 60 HZ			Glass Filler Acc. Option	Cabinet Color Finish	Net Wt. Approx.
	Rated Capacity GPH	Base Rate GPH	Pre-Cooler		Compr. HP	Full Load Amps	Rated Watts			
P8M	8.0	8.0	No	No	1/5	4.3	320	Yes	Yes	73 Lbs.
P14M**	14.0	7.8	Yes	No	1/5	4.6	320	Yes	Yes	76 Lbs.
PM									Yes	35 Lbs.

*Industry Standard Rating Condition 80° F inlet water temperature.

**Special export models available, operable on 220-240 volts, 50/60 Hz.

Specifications subject to change without notice

OASIS™ ON-A-WALL WATER COOLER MODELS P8M, P14M, PM



- HOT TANK DRAIN (WHERE APPLICABLE)
- 1-1/4 O.D. TAILPIECE
- 3/8 O.D. WATER INLET

NOTES:

1. TRAP, STOP VALVE AND ELECTRICAL OUTLET NOT FURNISHED.
2. ALLOW 4 INCHES [102 MM] MIN. PER SIDE FOR VENTILATION.
3. RECOMMENDED ADULT HEIGHT INSTALLATION SHOWN. ADJUST VERTICAL DIMENSIONS AS REQ'D TO COMPLY WITH FEDERAL, STATE, AND LOCAL CODES.
4. ALL DIMENSIONS ARE IN INCHES. DIMENSIONS IN BRACKETS [] ARE IN MILLIMETERS.

THIRD ANGLE PROJECTION

ROUGHING-IN AND DIMENSIONAL DRAWING