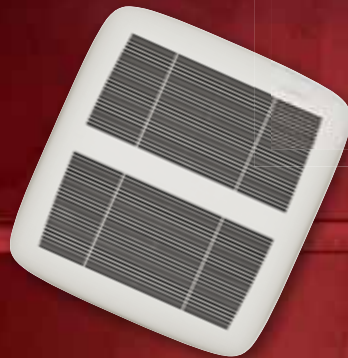


NuTone®



**ULTRA PRO™**  
VENTILATION FANS



MAY 2014

# ULTRAQUICK™ INSTALLATION TECHNOLOGY

A revolution in ventilation fan technology engineered to simplify installation.

We didn't just change one thing to make ULTRA Pro™ ventilation fan installations faster—we changed everything. From a unique telescoping mounting frame that installs room-side to an easy-to-insert housing and blower that snap into place, we designed the ULTRA Pro Series for fast, easy, universal application.

Retrofit installations can now be done easily from the room-side without worrying about what type of joist or truss is above the drywall. ULTRA Pro Series ventilation fans and fan/lights install up to 60% faster in retrofits and up to 20% faster in new construction. It's a revolutionary way to install, profit and ventilate.

Pre-installed screws in the mounting frame enable quick installation.



Inside/outside wiring capability provides flexible new or retrofit installation.



For room-side installation, pull the duct through the opening, attach the duct to the connector, push the connector into place and fasten to the housing with only one screw.



Vertical positioning tabs ensure the housing is in the right place.



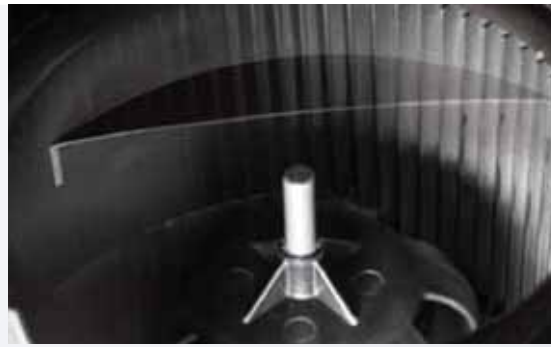
For no-hassle installation, the blower simply snaps into the housing.



You can hear—and feel—when fan housing snaps into place. The easy-to-position carriage enables location adjustment between joists to ensure desired ceiling placement.



The expandable mounting frame adjusts from 14"–24" and fits any type of joist, I-Joist or truss construction.

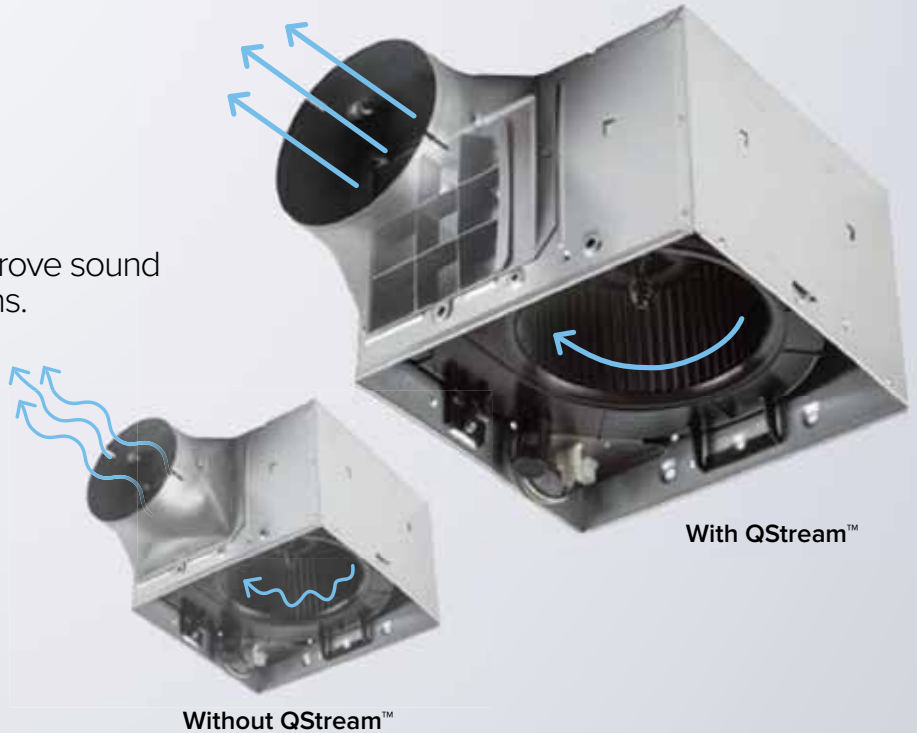


# QSTREAM™

## SOUND TECHNOLOGY

Reduce sound levels and improve sound quality in real-world installations.

The innovative, patent-pending QStream™ technology utilizes airflow-smoothing baffles that reduce turbulence which means the blower can turn more slowly and quietly—without airflow loss.



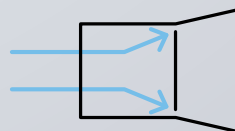
## QFlow™ Damper Technology

Patent-pending QFlow technology removes the duct damper flap from the airstream path, reducing static pressure and noise when the fan is on. It also helps achieve desired building airtightness scores when the fan is off.

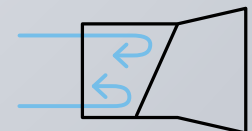


### FAN OFF

Without QFlow, outdoor air can intrude past the damper edges.

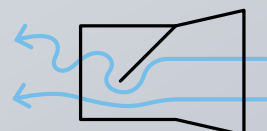


With QFlow, outdoor air intrusion is blocked with the new edge-to-edge design.

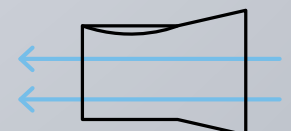


### FAN ON

Without QFlow, the flap impedes airflow which increases static pressure, turbulence and noise.



With QFlow, the flap lifts out of the way, minimizing turbulence for more quiet operation.



# ULTRALUCENT™ LIGHTING TECHNOLOGY

The design of the ULTRA™ Series light lens distributes illumination evenly while using less wattage. 36-watt lights deliver the brightness of models previously requiring 60 watts of CFL output, maximizing the lumen output per watt of the bulb.

## Premium Radiation Damper

Unlike most other radiation dampers, our exclusive design places the damper inside a frame so you do not need to disturb the drywall if you ever need to remove the damper to service or upgrade the motor assembly. Most codes require fire-rated ceilings in multi-story buildings, and exhaust fans that are protected by dampers, to protect against the spread of heat and flame. Premium radiation dampers help protect the fan opening in 1-, 2-, or 3-hour fire-rated, floor-ceiling and roof-ceiling designs.

### Model RDF1 Fits ULTRA Pro™ Series Fans:

NuTone Models: RN80, RN110.

### Certifications:

- UL classified (UL standard 555C).
- Warnock Hersey Listing enables use in combustible ceilings with ducted fans.



RDF1 Radiation Damper

Model	Duct Size	CFM	0.25" CFM	Sones	Light/ Night Light	ENERGY STAR	Housing Dimensions (in)			Grille Dimensions (in)		Grille Finish	Amps	UL Tub/ Shower
							W	L	H	L	W			
<b>Single-Speed Fans</b>														
<b>RN80</b>	4"	80	60	<0.3	—	Yes	11-3/8	10-1/2	7-5/8	13	14	White Polymeric	0.3	Yes
<b>RN110</b>	4"	110	91	0.6	—	Yes	11-3/8	10-1/2	7-5/8	13	14	White Polymeric	0.9*	Yes
<b>Single-Speed Fan/Lights</b>														
<b>RN80L</b>	4"	80	60	<0.3	2-18W GU24 / 4W	Yes	11-3/8	10-1/2	7-5/8	13	14	White Polymeric	0.3	Yes
<b>RN110L</b>	4"	110	90	0.8	2-18W GU24 / 4W	Yes	11-3/8	10-1/2	7-5/8	13	14	White Polymeric	0.9*	Yes

\*Total connected load



# NuTone®

**NuToneULTRA.com**

Broan-NuTone LLC, 926 W. State Street  
Hartford, WI 53027 • 888-336-3948  
In Canada call 877-896-1119

America's Choice For Green Builders.® Proud to be ENERGY STAR® partners.



0 26715 23407 3