



Air Conditioning & Heating

# ARUF SERIES

## MULTI-POSITION MULTI-SPEED PSC MOTOR AIR HANDLER

### 1½ TO 5 TONS



#### Product Features

- Check flowrator for cooling and heat pump applications
- Direct drive, multi-speed PSC blower motor
- All-aluminum evaporator coil
- Coil mounting track for quick repositioning
- Optimized for use with R-410A refrigerant
- Cabinet air leakage less than 2.0% at 1.0 inch H2O when tested in accordance with ASHRAE standard 193
- Cabinet air leakage less than 1.4% at 0.5 inch H2O when tested in accordance with ASHRAE standard 193
- 3 kW – 25 kW electric heater kits
- Horizontal or vertical configuration capabilities
- Rigid SmartFrame™ cabinet
- 21" depth for easier attic access
- DecaBDE-free thermoplastic drain pan with secondary drain connections
- Screw-less sides and back helps to reduce condensation when installed in humid locations
- Foil-faced insulation covers the internal casing to reduce cabinet condensation
- Galvanized, leather grain-embossed finish
- Glue-less cabinet insulation retention
- Tool-less filter access
- AHRI certified; ETL listed

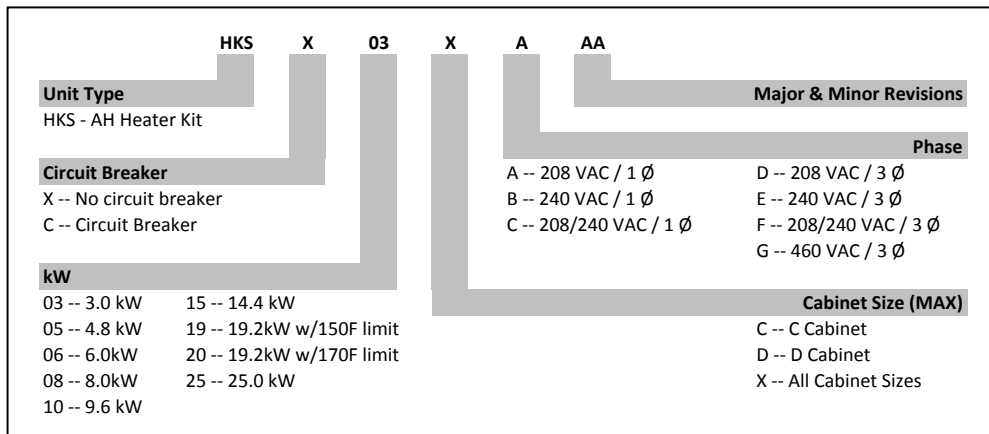
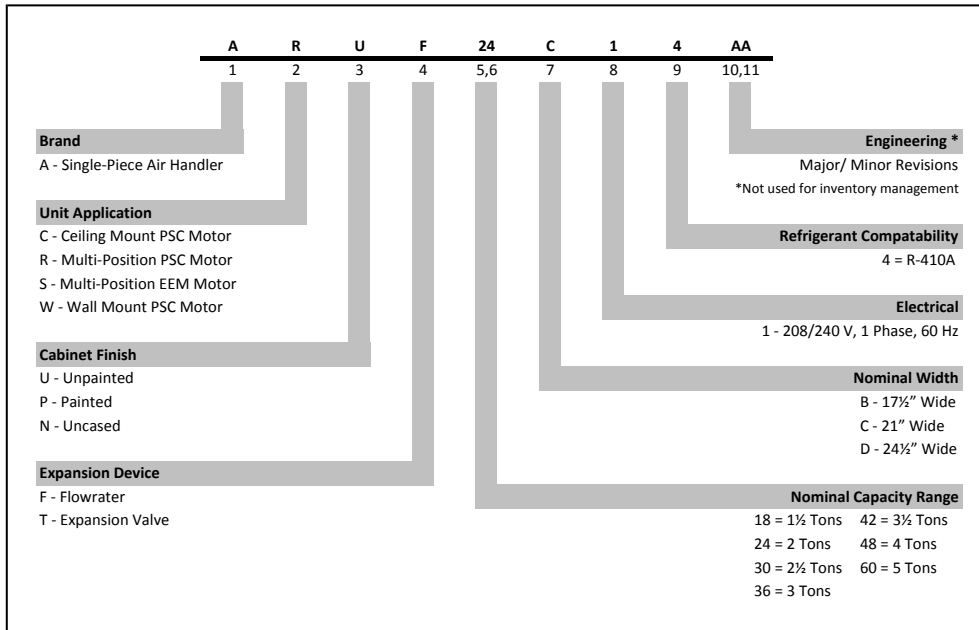
#### Contents

|                              |   |
|------------------------------|---|
| Nomenclature .....           | 2 |
| Accessories .....            | 2 |
| Product Specifications ..... | 3 |
| Dimensions .....             | 4 |
| Airflow Data .....           | 5 |
| Heat Kit Data .....          | 6 |
| Wiring Diagram .....         | 8 |



\* Complete warranty details available from your local dealer or at [www.goodmanmfg.com](http://www.goodmanmfg.com). To receive the 10-Year Parts Limited Warranty, online registration must be completed within 60 days of installation. Online registration is not required in California or Québec.

NOMENCLATURE



HEATING kW CORRECTION FACTOR

|                   |      |      |      |      |      |
|-------------------|------|------|------|------|------|
| SUPPLY VOLTAGE    | 240  | 230  | 220  | 210  | 208  |
| CORRECTION FACTOR | 1.00 | 0.92 | 0.84 | 0.77 | 0.75 |

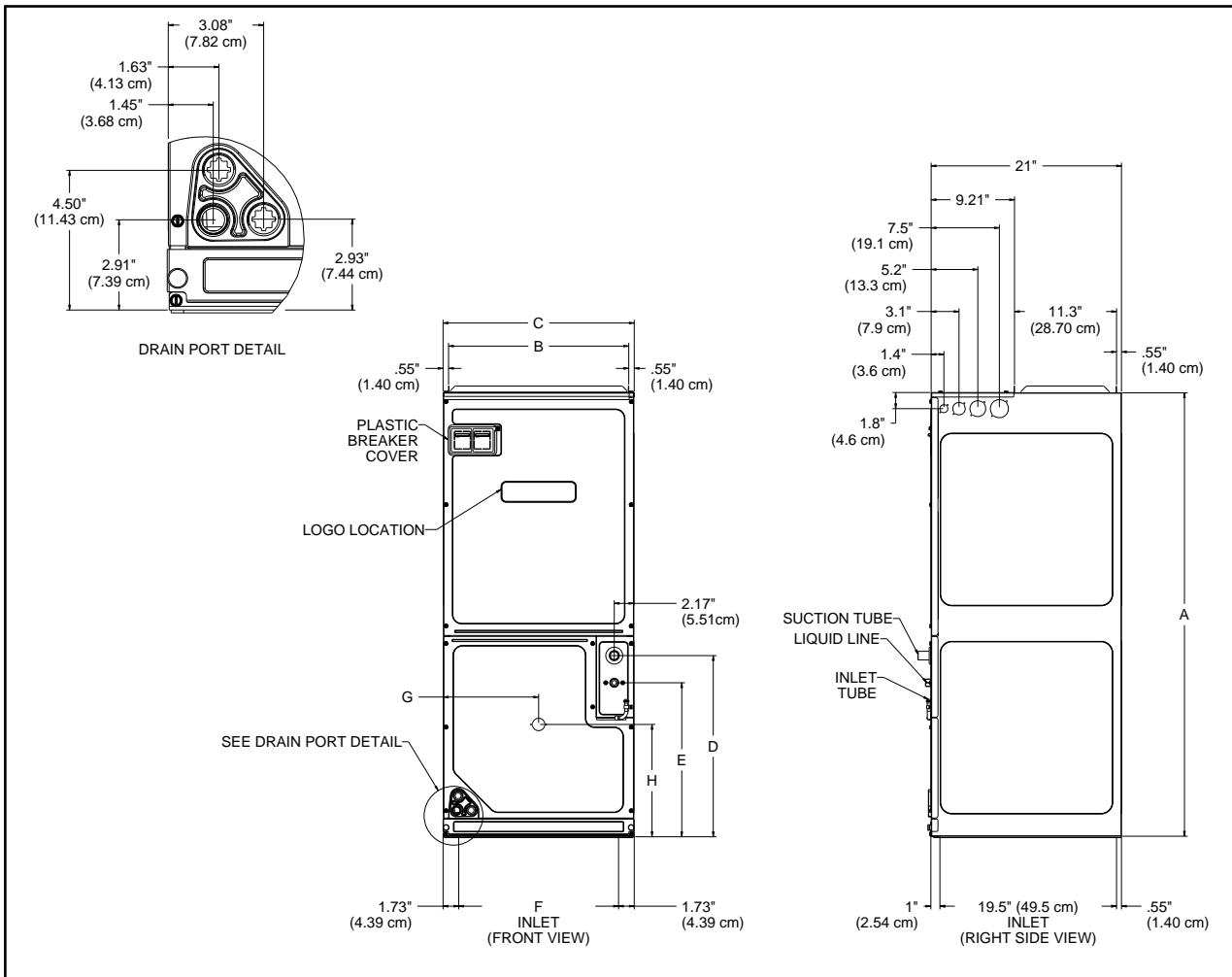
Multiply the 240-volt heating capacity by correction factors.

SPECIFICATIONS

|                                | ARUF<br>18B14* | ARUF<br>24B14* | ARUF<br>30B14* | ARUF<br>30C14* | ARUF<br>36C14* | ARUF<br>42C14* | ARUF<br>48D14* | ARUF<br>60D14* |
|--------------------------------|----------------|----------------|----------------|----------------|----------------|----------------|----------------|----------------|
| <b>NOMINAL RATINGS</b>         |                |                |                |                |                |                |                |                |
| Cooling (Btu/h)                | 18,000         | 24,000         | 30,000         | 36,000         | 36,000         | 42,000         | 48,000         | 60,000         |
| Piston Size                    | 0.049          | 0.057          | 0.065          | 0.071          | 0.071          | 0.074          | 0.078          | 0.088          |
| <b>BLOWER</b>                  |                |                |                |                |                |                |                |                |
| Diameter                       | 9½"            | 9½"            | 9½"            | 10½"           | 10½"           | 10½"           | 10½"           | 12"            |
| Width                          | 6"             | 6"             | 6"             | 8"             | 8"             | 10½"           | 10½"           | 10½"           |
| <b>COIL CONNECTIONS</b>        |                |                |                |                |                |                |                |                |
| Liquid                         | 3/8"           | 3/8"           | 3/8"           | 3/8"           | 3/8"           | 3/8"           | 3/8"           | 3/8"           |
| Suction                        | 3/4"           | 3/4"           | 3/4"           | 3/4"           | 3/4"           | 7/8"           | 7/8"           | 7/8"           |
| Coil Drain Connect (FPT)       | 3/4"           | 3/4"           | 3/4"           | 3/4"           | 3/4"           | 3/4"           | 3/4"           | 3/4"           |
| <b>ELECTRICAL DATA</b>         |                |                |                |                |                |                |                |                |
| Voltage                        | 208/230        | 208/230        | 208/230        | 208/230        | 208/230        | 208/230        | 208/230        | 208/230        |
| Min Circuit Ampacity           | 3/3            | 3/3            | 3/3            | 4/4            | 4/4            | 4/4            | 5/5            | 6/6            |
| Max. Overcurrent Device (Amps) | 15/15          | 15/15          | 15/15          | 15/15          | 15/15          | 15/15          | 15/15          | 15/15          |
| Minimum VAC                    | 197            | 197            | 197            | 197            | 197            | 197            | 197            | 197            |
| Maximum VAC                    | 253            | 253            | 253            | 253            | 253            | 253            | 253            | 253            |
| <b>Blower Motor</b>            |                |                |                |                |                |                |                |                |
| Full Load Amps (FLA)           | 1.9            | 1.9            | 1.9            | 3.0            | 3.0            | 3.1            | 3.5            | 4.6            |
| Horsepower (HP)                | ⅓              | ⅓              | ⅓              | ⅓              | ⅓              | ⅓              | ½              | ¾              |
| <b>SHIP WEIGHT (LBS.)</b>      |                |                |                |                |                |                |                |                |
|                                | 96             | 96             | 102            | 116            | 116            | 118            | 147            | 151            |

**Note:** For a properly matched system and piston sizing information, refer to Goodman piston kit chart of the corresponding Goodman outdoor unit. Minimum Circuit Ampacity (MCA) and Maximum Overcurrent Protection (MOP) for blower without supplemental heat installed. Refer to unit nameplate and/or Heat Kit Data for specification with approved accessory heaters installed.

DIMENSIONS



| MODEL      | A" | B"               | C"               | D"               | E"               | F"               | G"               | H"               |
|------------|----|------------------|------------------|------------------|------------------|------------------|------------------|------------------|
| ARUF18B14* | 45 | 16 $\frac{3}{8}$ | 17 $\frac{1}{2}$ | 18               | 15               | 14 $\frac{1}{4}$ | 8 $\frac{7}{8}$  | 12               |
| ARUF24B14* | 45 | 16 $\frac{3}{8}$ | 17 $\frac{1}{2}$ | 18               | 15               | 14 $\frac{1}{4}$ | 8 $\frac{7}{8}$  | 12               |
| ARUF30B14* | 45 | 16 $\frac{3}{8}$ | 17 $\frac{1}{2}$ | 18               | 15               | 14 $\frac{1}{4}$ | 8 $\frac{7}{8}$  | 12               |
| ARUF30C14* | 49 | 20               | 21               | 20               | 17               | 17 $\frac{3}{4}$ | 10 $\frac{1}{2}$ | 12 $\frac{3}{8}$ |
| ARUF36C14* | 49 | 20               | 21               | 20               | 17               | 17 $\frac{3}{4}$ | 10 $\frac{1}{2}$ | 12 $\frac{3}{8}$ |
| ARUF42C14* | 49 | 20               | 21               | 20               | 17               | 17 $\frac{3}{4}$ | 10 $\frac{1}{2}$ | 12 $\frac{3}{8}$ |
| ARUF48D14* | 58 | 23 $\frac{3}{8}$ | 24 $\frac{1}{2}$ | 28 $\frac{1}{4}$ | 25 $\frac{1}{4}$ | 21 $\frac{1}{4}$ | 12 $\frac{3}{8}$ | 12 $\frac{3}{8}$ |
| ARUF60D14* | 58 | 23 $\frac{3}{8}$ | 24 $\frac{1}{2}$ | 28 $\frac{1}{4}$ | 25 $\frac{1}{4}$ | 21 $\frac{1}{4}$ | 12 $\frac{3}{8}$ | 12 $\frac{3}{8}$ |

## AIRFLOW DATA

| MODEL     | MOTOR SPEED | STATIC PRESSURE (IN W.C) AIRFLOW (CFM) |       |       |       |       |       |       |
|-----------|-------------|--|-------|-------|-------|-------|-------|-------|
|           |             | 0.1                                    | 0.2   | 0.3   | 0.4   | 0.5   | 0.6   | 0.7   |
| ARUF18B14 | High        | 1,150                                  | 1,095 | 1,045 | 1,025 | 950   | 865   | 775   |
|           | Medium      | 890                                    | 855   | 835   | 775   | 715   | 665   | 605   |
|           | Low         | 640                                    | 605   | 565   | 530   | 485   | 440   | 360   |
| ARUF24B14 | High        | 1,150                                  | 1,095 | 1,045 | 1,025 | 950   | 865   | 775   |
|           | Medium      | 890                                    | 855   | 835   | 775   | 715   | 665   | 605   |
|           | Low         | 640                                    | 605   | 565   | 530   | 485   | 440   | 360   |
| ARUF30B14 | High        | 1,145                                  | 1,085 | 1,020 | 950   | 900   | 845   | 765   |
|           | Medium      | 870                                    | 820   | 775   | 745   | 705   | 655   | 580   |
|           | Low         | 615                                    | 585   | 565   | 535   | 490   | 435   | 345   |
| ARUF30C14 | High        | 1,485                                  | 1,435 | 1,385 | 1,345 | 1,275 | 1,205 | 1,125 |
|           | Medium      | 1,300                                  | 1,270 | 1,235 | 1,195 | 1,130 | 1,060 | 955   |
|           | Low         | 1,040                                  | 1,015 | 980   | 930   | 865   | 790   | 705   |
| ARUF36C14 | High        | 1,485                                  | 1,435 | 1,385 | 1,345 | 1,275 | 1,205 | 1,125 |
|           | Medium      | 1,300                                  | 1,270 | 1,235 | 1,195 | 1,130 | 1,060 | 955   |
|           | Low         | 1,040                                  | 1,015 | 980   | 930   | 865   | 790   | 705   |
| ARUF42C14 | High        | 1,655                                  | 1,590 | 1,515 | 1,430 | 1,340 | 1,225 | 1,080 |
|           | Medium      | 1,435                                  | 1,370 | 1,300 | 1,220 | 1,150 | 1,025 | 925   |
|           | Low         | 1,115                                  | 1,040 | 995   | 930   | 845   | 770   | 675   |
| ARUF48D14 | High        | 1,990                                  | 1,915 | 1,810 | 1,765 | 1,690 | 1,585 | 1,435 |
|           | Medium      | 1,655                                  | 1,605 | 1,555 | 1,480 | 1,295 | 1,200 | 1,060 |
|           | Low         | 1,480                                  | 1,420 | 1,350 | 1,290 | 1,185 | 1,100 | 1,045 |
| ARUF60D14 | High        | 2,235                                  | 2,175 | 2,125 | 2,050 | 1,960 | 1,825 | 1,720 |
|           | Medium      | 2,030                                  | 1,970 | 1,885 | 1,800 | 1,690 | 1,600 | 1,495 |
|           | Low         | 1,615                                  | 1,535 | 1,455 | 1,355 | 1,270 | 1,185 | 1,090 |

### NOTES

- The chart is for information only. For satisfactory operation, external static pressure must not exceed value shown on rating plate.
- Use the CFM adjustment factors of .98 for horizontal left, .95 for horizontal right & .96 for downflow orientations.
- Airflow data indicated is at 230V without air filter in place.
- Shaded area indicates ranges in excess of maximum recommended design external static pressure.

HEAT KIT DATA

| Models             | Circuit 1 |                  |                  | Circuit 2 |                  |                  | Single-Point Kit |                  |
|--------------------|-----------|------------------|------------------|-----------|------------------|------------------|------------------|------------------|
|                    | Heater    | MCA <sup>1</sup> | MOP <sup>2</sup> | Heater    | MCA <sup>1</sup> | MOP <sup>2</sup> | MCA <sup>1</sup> | MOP <sup>2</sup> |
| <b>ARUF18B14AB</b> | 0/0       | 2.4/2.4          | 15/15            | ---       | ---              | ---              | ---              | ---              |
| HKS*03XC*          | 10.8/12.5 | 16/18            | 20/20            | ---       | ---              | ---              | ---              | ---              |
| HKS*05XC*          | 17.3/20   | 24/27            | 25/30            | ---       | ---              | ---              | ---              | ---              |
| HKS*06XC*          | 21.7/25   | 29/34            | 30/35            | ---       | ---              | ---              | ---              | ---              |
| HKS*08XC*          | 28.9/33.3 | 38/44            | 40/45            | ---       | ---              | ---              | ---              | ---              |
| HKS*10XC*          | 34.7/40   | 46/52            | 50/60            | ---       | ---              | ---              | ---              | ---              |
| <b>ARUF24B14CA</b> | 0/0       | 2.4/2.4          | 15/15            | ---       | ---              | ---              | ---              | ---              |
| HKS*03XC*          | 10.8/12.5 | 16/18            | 20/20            | ---       | ---              | ---              | ---              | ---              |
| HKS*05XC*          | 17.3/20   | 24/28            | 25/30            | ---       | ---              | ---              | ---              | ---              |
| HKS*06XC*          | 21.7/25   | 29/34            | 30/35            | ---       | ---              | ---              | ---              | ---              |
| HKS*08XC*          | 28.9/33.3 | 38/44            | 40/45            | ---       | ---              | ---              | ---              | ---              |
| HKS*10XC*          | 34.7/40   | 46/52            | 50/60            | ---       | ---              | ---              | ---              | ---              |
| <b>ARUF30B14AC</b> | 0/0       | 2.4/2.4          | 15/15            | ---       | ---              | ---              | ---              | ---              |
| HKS*03XC*          | 10.8/12.5 | 16/18            | 20/20            | ---       | ---              | ---              | ---              | ---              |
| HKS*05XC*          | 17.3/20   | 24/27            | 25/30            | ---       | ---              | ---              | ---              | ---              |
| HKS*06XC*          | 21.7/25   | 29/34            | 30/35            | ---       | ---              | ---              | ---              | ---              |
| HKS*08XC*          | 28.9/33.3 | 38/44            | 40/45            | ---       | ---              | ---              | ---              | ---              |
| HKS*10XC*          | 34.7/40   | 46/52            | 50/60            | ---       | ---              | ---              | ---              | ---              |
| HKSC15*##          | 34.7/40   | 46/53            | 50/60            | 17.3/20   | 22/25            | 25/25            | 67/79            | 70/80            |
| <b>ARUF30C14BB</b> | 0/0       | 4/4              | 15/15            | ---       | ---              | ---              | ---              | ---              |
| HKS*03XC*          | 10.8/12.5 | 17/19            | 20/20            | ---       | ---              | ---              | ---              | ---              |
| HKS*05XC*          | 17.3/20   | 25.4/29          | 30/30            | ---       | ---              | ---              | ---              | ---              |
| HKS*06XC*          | 21.7/25   | 31/35            | 35/35            | ---       | ---              | ---              | ---              | ---              |
| HKS*08XC*          | 28.9/33.3 | 40/45.4          | 40/50            | ---       | ---              | ---              | ---              | ---              |
| HKS*10XC*          | 34.7/40   | 47/54            | 50/60            | ---       | ---              | ---              | ---              | ---              |
| HKSX15XF*          | 0/0       | 4/4              | 15/15            | 30/34.6   | 38/43            | 40/45            | ---              | ---              |
| HKSX20XF*          | 0/0       | 4/4              | 15/15            | 38/43     | 47/54            | 50/60            | ---              | ---              |
| HKSC15*##          | 34.7/40   | 47/54            | 50/60            | 17.3/20   | 22/25            | 25/25            | 69/79            | 70/80            |
| HKSC19C##          | 34.7/40   | 47/54            | 50/60            | 34.7/40   | 43/50            | 45/50            | 90.4/104         | 100/110          |
| HKSC15XF*          | 0/0       | 4/4              | 15/15            | 30/34.6   | 38/43            | 40/45            | ---              | ---              |
| HKSC20XF*          | 0/0       | 4/4              | 15/15            | 38/43     | 47/54            | 50/60            | ---              | ---              |
| <b>ARUF36C14BC</b> | 0/0       | 4/4              | 15/15            | ---       | ---              | ---              | ---              | ---              |
| HKS*03XC*          | 10.8/12.5 | 17/19            | 20/20            | ---       | ---              | ---              | ---              | ---              |
| HKS*05XC*          | 17.3/20   | 25.4/29          | 30/30            | ---       | ---              | ---              | ---              | ---              |
| HKS*06XC*          | 21.7/25   | 31/35            | 35/35            | ---       | ---              | ---              | ---              | ---              |
| HKS*08XC*          | 28.9/33.3 | 40/45.4          | 40/50            | ---       | ---              | ---              | ---              | ---              |
| HKS*10XC*          | 34.7/40   | 47/54            | 50/60            | ---       | ---              | ---              | ---              | ---              |
| HKSX15XF*          | 0/0       | 4/4              | 15/15            | 30/34.6   | 38/43            | 40/45            | ---              | ---              |
| HKSX20XF*          | 0/0       | 4/4              | 15/15            | 38/43     | 47/54            | 50/60            | ---              | ---              |
| HKSC15*##          | 34.7/40   | 47/54            | 50/60            | 17.3/20   | 22/25            | 25/25            | 69/79            | 70/80            |
| HKSC19C##          | 34.7/40   | 47/54            | 50/60            | 34.7/40   | 43/50            | 45/50            | 90.4/104         | 100/110          |
| HKSC15XF*          | 0/0       | 4/4              | 15/15            | 30/34.6   | 38/43            | 40/45            | ---              | ---              |
| HKSC20XF*          | 0/0       | 4/4              | 15/15            | 38/43     | 47/54            | 50/60            | ---              | ---              |

HEAT KIT DATA (CONT.)

| Models             | Circuit 1 |                  |                  | Circuit 2 |                  |                  | Single-Point Kit |                  |
|--------------------|-----------|------------------|------------------|-----------|------------------|------------------|------------------|------------------|
|                    | Heater    | MCA <sup>1</sup> | MOP <sup>2</sup> | Heater    | MCA <sup>1</sup> | MOP <sup>2</sup> | MCA <sup>1</sup> | MOP <sup>2</sup> |
| <b>ARUF42C14AD</b> | 0/0       | 3.8/3.8          | 15/15            | ---       | ---              | ---              | ---              | ---              |
| HKS*03XC*          | 10.8/12.5 | 17/20            | 20/20            | ---       | ---              | ---              | ---              | ---              |
| HKS*05XC*          | 17.3/20   | 26/29            | 30/30            | ---       | ---              | ---              | ---              | ---              |
| HKS*06XC*          | 21.7/25   | 31/35.1          | 35/40            | ---       | ---              | ---              | ---              | ---              |
| HKS*08XC*          | 28.9/33.3 | 40/46            | 40/50            | ---       | ---              | ---              | ---              | ---              |
| HKS*10XC*          | 34.7/40   | 47/54            | 50/60            | ---       | ---              | ---              | ---              | ---              |
| HKSX15XF*          | 0/0       | 4/4              | 15/15            | 30/34.6   | 38/43            | 40/45            | ---              | ---              |
| HKSX20XF*          | 0/0       | 4/4              | 15/15            | 38/43     | 47/54            | 50/60            | ---              | ---              |
| HKSC15*##          | 34.7/40   | 47/54            | 50/60            | 17.3/20   | 22/25            | 25/25            | 69/79            | 70/80            |
| HKSC19C##          | 34.7/40   | 47/54            | 50/60            | 34.7/40   | 43/50            | 45/50            | 91/104           | 100/110          |
| HKSC15XF*          | 0/0       | 4/4              | 15/15            | 30/34.6   | 38/43            | 40/45            | ---              | ---              |
| HKSC20XF*          | 0/0       | 4/4              | 15/15            | 38/43     | 47/54            | 50/60            | ---              | ---              |
| <b>ARUF48D14AC</b> | 0/0       | 4/4              | 15/15            | ---       | ---              | ---              | ---              | ---              |
| HKS*03XC*          | 10.8/12.5 | 18/20            | 20/20            | ---       | ---              | ---              | ---              | ---              |
| HKS*05XC*          | 17.3/20   | 26/29            | 30/30            | ---       | ---              | ---              | ---              | ---              |
| HKS*06XC*          | 21.7/25   | 31/36            | 35/40            | ---       | ---              | ---              | ---              | ---              |
| HKS*08XC*          | 28.9/33.3 | 40/46            | 45/50            | ---       | ---              | ---              | ---              | ---              |
| HKS*10XC*          | 34.7/40   | 48/54            | 50/60            | ---       | ---              | ---              | ---              | ---              |
| HKSX15XF*          | 0/0       | 4/4              | 15/15            | 30/34.6   | 38/43            | 40/45            | ---              | ---              |
| HKSX20XF*          | 0/0       | 4/4              | 15/15            | 38/43     | 47/54            | 50/60            | ---              | ---              |
| HKSC15*##          | 34.7/40   | 48/54            | 50/60            | 17.3/20   | 22/25            | 25/25            | 69/79            | 70/80            |
| HKSC20D##          | 34.7/40   | 48/54            | 50/60            | 34.7/40   | 43/50            | 45/50            | 91/104           | 100/110          |
| HKSC15XF*          | 0/0       | 4/4              | 15/15            | 30/34.6   | 38/43            | 40/45            | ---              | ---              |
| HKSC20XF*          | 0/0       | 4/4              | 15/15            | 38/43     | 47/54            | 50/60            | ---              | ---              |
| <b>ARUF60D14AA</b> | 0/0       | 5.8/5.8          | 15/15            | ---       | ---              | ---              | ---              | ---              |
| HKS*03XC*          | 10.8/12.5 | 19/21            | 20/25            | ---       | ---              | ---              | ---              | ---              |
| HKS*05XC*          | 17.3/20   | 27/31            | 30/35            | ---       | ---              | ---              | ---              | ---              |
| HKS*06XC*          | 21.7/25   | 33/37            | 35/40            | ---       | ---              | ---              | ---              | ---              |
| HKS*08XC*          | 28.9/33.3 | 42/48            | 45/50            | ---       | ---              | ---              | ---              | ---              |
| HKS*10XC*          | 34.7/40   | 49/56            | 50/60            | ---       | ---              | ---              | ---              | ---              |
| HKSX15XF*          | 0/0       | 5.8/5.8          | 15/15            | 30/34.6   | 38/43            | 40/45            | ---              | ---              |
| HKSX20XF*          | 0/0       | 5.8/5.8          | 15/15            | 38/43     | 47/54            | 50/60            | ---              | ---              |
| HKSC15*##          | 34.7/40   | 49/56            | 50/60            | 17.3/20   | 22/25            | 25/25            | 71/81            | 80/90            |
| HKSC20D##          | 34.7/40   | 49/56            | 50/60            | 34.7/40   | 44/50            | 45/50            | 92/106           | 100/110          |
| HKSC15XF*          | 0/0       | 5.8/5.8          | 15/15            | 30/34.6   | 38/43            | 40/45            | ---              | ---              |
| HKSC20XF*          | 0/0       | 5.8/5.8          | 15/15            | 38/43     | 47/54            | 50/60            | ---              | ---              |
| HKSC25DC*          | 52/60     | 71/81            | 80/90            | 35/40     | 43/50            | 45/50            | 114/131          | 125/150          |

All ampacities noted above include air handler motor amps  
 Circuit 1: Single-phase for Air Handlers / Circuit 2: Three-phase  
 for HKR3 Heater Kits

<sup>1</sup> Minimum Circuit Ampacity (Heater Amps + Motor Amps) X 1.25

<sup>2</sup> Maximum Overcurrent Protection = 2.25 X Motor Amps +  
 Heater Amps

\* Revision level that may or may not be designated

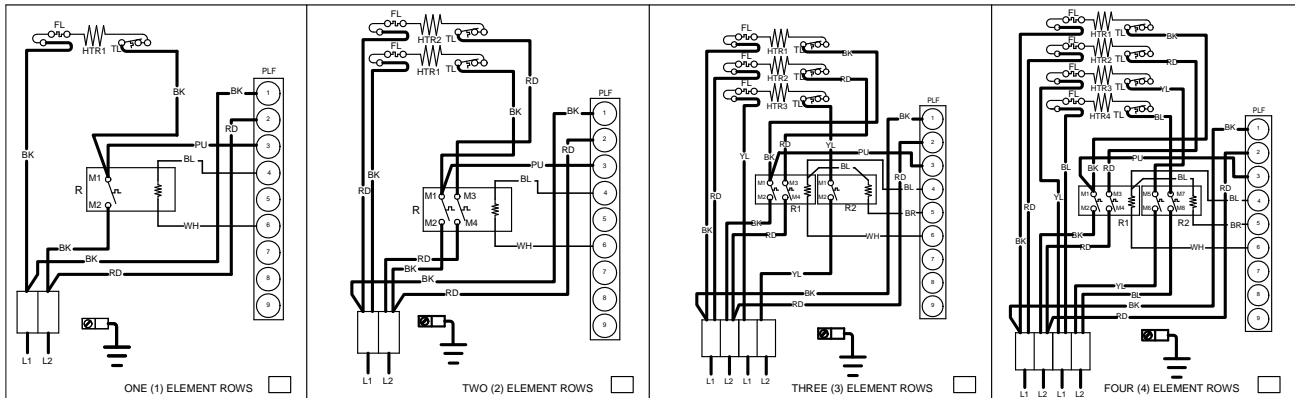
C = Circuit Breaker Option

--- indicates Not Required

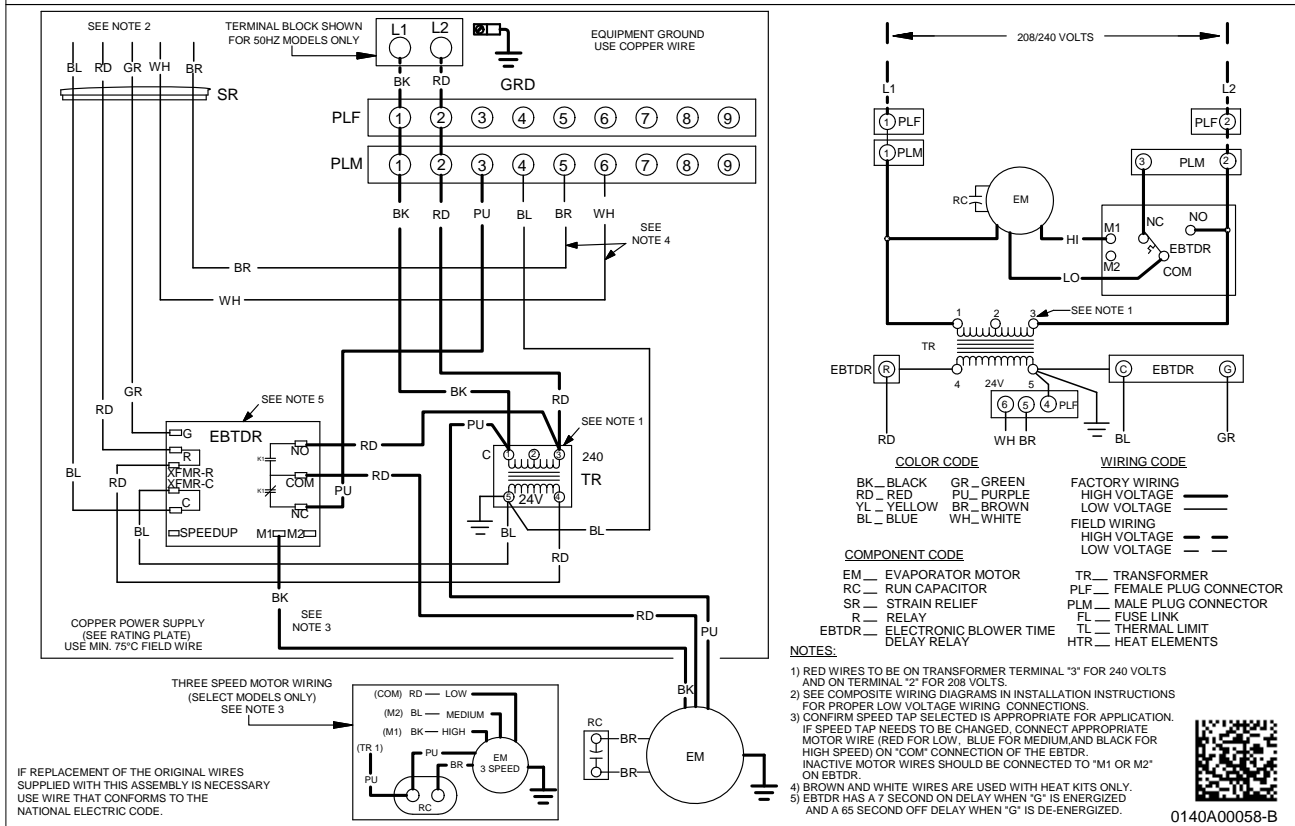
HKA meets the new UL1995 requirements for 15 and 20KW heaters

- Only applicable when HKA kits are included in table
- MBVC and MBR models

# WIRING DIAGRAM - AIR HANDLER



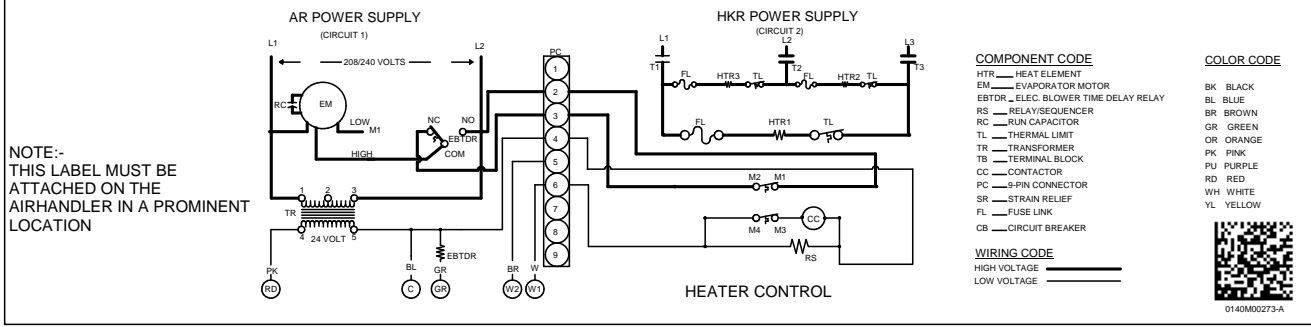
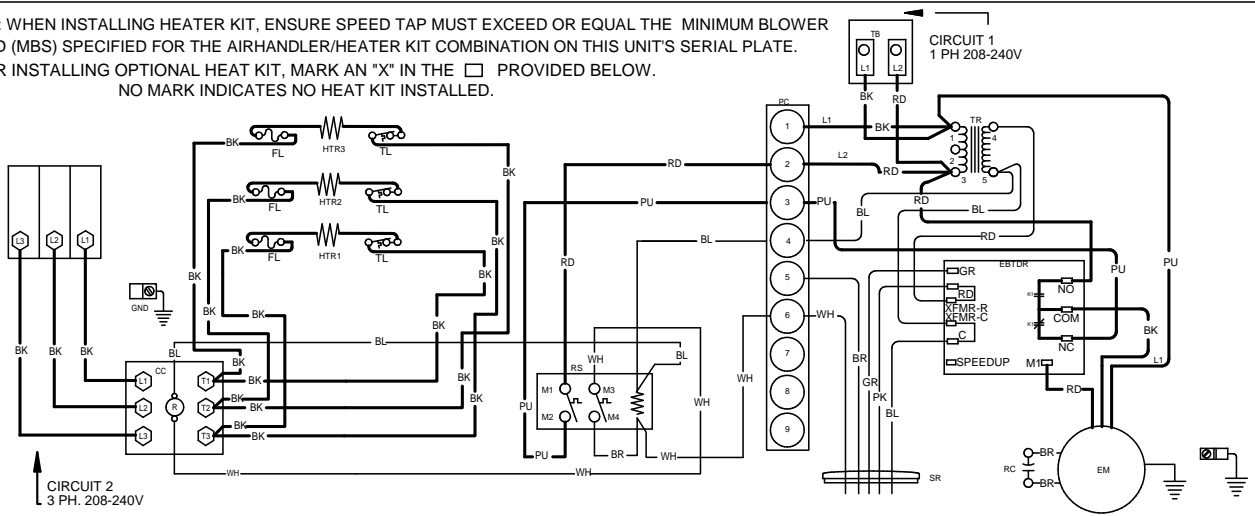
NOTE: WHEN INSTALLING HEATER KIT, ENSURE SPEED TAP IS NOT BELOW MINIMUM BLOWER SPEED (MBS) SPECIFIED FOR THE AIR HANDLER/HEATER KIT COMBINATION ON THIS UNITS SERIAL PLATE. AFTER INSTALLING OPTIONAL HEAT KIT, MARK A "X" IN THE PROVIDED ABOVE. MARK ACCORDING TO THE NUMBER OF HEATER ELEMENT ROWS INSTALLED. NO MARK INDICATES NO HEAT KIT INSTALLED. 5 ELEMENT ROWS DATA SUPPLIED WITH HEATER KIT.





# WIRING DIAGRAM - 3 PHASE HEATER KIT

NOTE: WHEN INSTALLING HEATER KIT, ENSURE SPEED TAP MUST EXCEED OR EQUAL THE MINIMUM BLOWER SPEED (MBS) SPECIFIED FOR THE AIRHANDLER/HEATER KIT COMBINATION ON THIS UNIT'S SERIAL PLATE.  
 AFTER INSTALLING OPTIONAL HEAT KIT, MARK AN "X" IN THE  PROVIDED BELOW.  
 NO MARK INDICATES NO HEAT KIT INSTALLED.



## ACCESSORIES

### EXPANSION VALVE KITS FOR AIR CONDITIONING AND HEAT PUMP APPLICATIONS

| KIT NUMBER | DESCRIPTION     | APPLICATION | REFRIGERANT | TONNAGE: OUTDOOR UNIT |
|------------|-----------------|-------------|-------------|-----------------------|
| TX2N4A     | Non-bleed Valve | AC or HP    | R-410A      | 1½ - 2 Ton            |
| TX3N4      | Non-bleed Valve | AC or HP    | R-410A      | 2½ - 3 Ton            |
| TX5N4      | Non-bleed Valve | AC or HP    | R-410A      | 3½ - 5 Ton            |

### DOWNFLOW INSULATION KIT

| DFK-B       | DFK-C       | DFK-D       |
|-------------|-------------|-------------|
| ARUF18B14** | ARUF30C14BA | ARUF48D14** |
| ARUF24B14** | ARUF36C14** | ARUF60D14** |
| ARUF30B14** | ARUF42C14** |             |

### FILTERS

| CHASSIS | PART #       | SIZE          |
|---------|--------------|---------------|
| B       | ALFH16201E   | 16.0" x 20.0" |
| C       | ALFH1912201E | 19.5" x 20.0" |
| D       | ALFH20231E   | 23.0" x 20.0" |

**NOTES**