

680 / 681

# TANK LEVERS

*Fits front, side and angle-mount tanks*

Broken tank lever? Replace with Fluidmaster's durable universal tank lever.

The arm can be bent or trimmed to fit just about any tank. Available in both white and chrome finishes to match any bathroom.

### *Special Features:*

- Chrome and white finish
- Trim or bend arm to fit most front, side and angle-mount tanks
- Easy to install
- Self-tightening locknut won't loosen over time
- Stylish design



TANK LEVERS

Update the look of your toilet



**The Toilet Repair**  
Experts

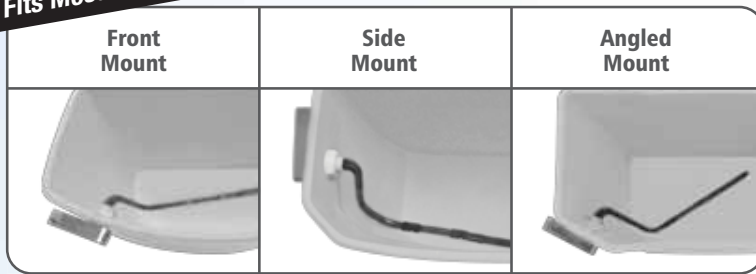


680 / 681  
**TANK  
 LEVERS**

**The Toilet Repair  
 Experts**

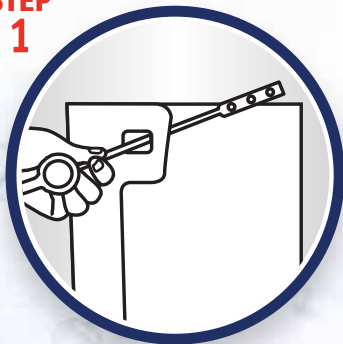
TANK LEVERS

**Fits Most Toilets**



- Chrome and white finish
- Trim or bend arm to fit most front, side and angle-mount tanks
- Easy to install
- Self-tightening locknut won't loosen over time

**STEP  
 1**



**Remove old  
 lever**

**STEP  
 2**



**Adjust arm to  
 fit tank**

**STEP  
 3**



**Install.  
 Tighten locknut**

MODEL NUMBER	DESCRIPTION	CASE QTY	PRODUCT DIMENSIONS W/D/H (INCHES)	CASE DIMENSIONS W/D/H (INCHES)	CASE WEIGHT (LBS)	UPC	SCCI 2 of 5
680	Standard White Tank Lever	10	12.5" x 3.75" x 1.5"	7.38" x 13.13" x 4.31"	2	0 39961 006806	100 39961 006803
681	Standard Chrome Tank Lever	10	12.5" x 3.75" x 1.5"	7.38" x 13.13" x 4.31"	2	0 39961 006813	100 39961 006810

Fluidmaster, Inc. at 30800 Rancho Viejo Road, San Juan Capistrano, CA 92675  
 (949) 728-2000, Fax (949) 728-2205.  
 Red/Green color arrangement is a registered trademark of Fluidmaster, Inc.  
 © 2014 Fluidmaster, Inc. ® Registered trademark of Fluidmaster, Inc.  
 U.S. and Other Patents Pending.  
 06/14 FM91523 Rev.1

