

**For Residential and Commercial Applications**

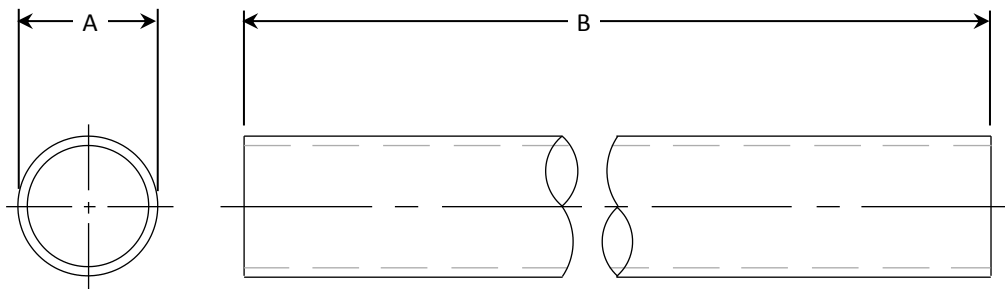
Job Name		Engineer / Architect	
Job Location		Wholesaler	
Submittal Date		Contractor	

## 1-12 / 1-72 Copper Tubing – Dead Soft

**Uses:** For use in potable water distribution in accessible locations only.

**Design Features:**

- One-piece construction
- 100% Compliant product



**Operating Specifications:**

**Temperature:** 40° - 140° F

**Pressure:** 125 PSI maximum

<b>MATERIAL SPECIFICATIONS</b>	
<b>Tube</b>	Copper, chrome plated

<b>PART DIMENSIONS (Inches)</b>			
<b>Model</b>	<b>DIA. A</b>	<b>DIM. B</b>	<b>WALL</b>
1-12	.375	12.00	.025
1-72	.375	72.00	.025

**Part Listing:**

- 1-12 C                      3/8" OD x 12" long slip tube, chrome plated
- 1-72 C                      3/8" OD x 72" long slip tube, chrome plated

**Listings & Certifications:**

- Compliant product CSA listed to Low Lead Content Certification Program – Plumbing Products Class 6853-01



*This specification and all information contained herein is the confidential and exclusive property of BrassCraft Manufacturing, and shall not be disclosed to others without the written consent of BrassCraft Mfg. This specification must be returned to BrassCraft Mfg if requested.*

