

**For Residential and Commercial Applications**

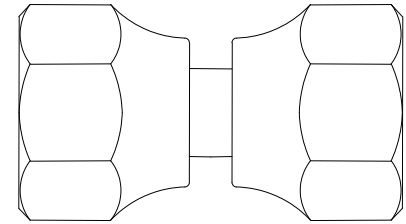
|                |  |                      |  |
|----------------|--|----------------------|--|
| Job Name       |  | Engineer / Architect |  |
| Job Location   |  | Wholesaler           |  |
| Submittal Date |  | Contractor           |  |

## 114FSV Series Swivel Flare Nut Connector

**Use:** For use with fuel, oil, liquefied petroleum (LP) and natural gas lines. Designed for use with aluminum, copper, brass and welded steel tubing that can be flared

**Design Features:**

- **Recommended for higher pressures** than those covered by compression fittings
- **Resist mechanical pull out**
- **Available in a broad range of sizes**



**Operating Specifications:**

- Temperature:** -65° - 250° F at maximum operating pressures
- Working Pressure:** See chart below
- Vibration:** Good vibration resistance\*



\*Recommend long flare nuts when greater vibration resistance is required

| <b>MAXIMUM WORKING PRESSURES</b> |           |  |       |       |       |       |                               |       |       |       |       |
|----------------------------------|-----------|--|-------|-------|-------|-------|-------------------------------|-------|-------|-------|-------|
| Service Conditions               | Tube O.D. | Type of Tubing and Wall Thickness (Inches) |       |       |       |       |                               |       |       |       |       |
|                                  |           | Copper – Dead Soft (Seamless)              |       |       |       |       | Copper – Half Hard (Seamless) |       |       |       |       |
|                                  |           | .030"                                      | .032" | .035" | .049" | .065" | .032"                         | .035" | .042" | .049" | .065" |
| Safety Factor 4-1                | 1/8       | 4300                                       |       | 5000  |       |       | 5000                          |       |       |       |       |
|                                  | 3/16      | 2850                                       |       | 3300  |       |       | 3400                          |       |       |       |       |
|                                  | 1/4       | 2100                                       | 2250  | 2500  |       |       | 2500                          |       |       |       |       |
|                                  | 5/16      |  | 1800  | 2000  |       |       | 2000                          |       |       |       |       |
|                                  | 3/8       |  | 1500  | 1650  |       |       | 1700                          | 1850  |       |       |       |
|                                  | 1/2       |  | 1100  | 1250  |       | 2000  | 1250                          | 1400  |       |       | 2600  |
|                                  | 5/8       |  |       | 1000  | 1400  | 1800  | 1000                          |       |       | 1500  | 2000  |
|                                  | 3/4       |  |       | 850   | 1150  | 1500  |                               |       | 1100  |       | 1700  |
|                                  | 7/8       |  |       |       |       |       |                               |       | 1100  | 1500  |       |
| Safety Factor 6-1                | 1/8       | 2800                                       |       | 3350  |       |       | 3400                          |       |       |       |       |
|                                  | 3/16      | 1900                                       |       | 2200  |       |       | 2250                          |       |       |       |       |
|                                  | 1/4       | 1430                                       | 1500  | 1650  |       |       | 1700                          |       |       |       |       |
|                                  | 5/16      |  | 1200  | 1300  |       |       | 1350                          |       |       |       |       |
|                                  | 3/8       |  | 100   | 1100  |       |       | 1100                          | 1200  |       |       |       |
|                                  | 1/2       |  | 750   | 825   |       | 1550  | 850                           | 925   |       |       | 1750  |
|                                  | 5/8       |  |       | 650   | 930   | 1200  | 675                           |       |       | 1000  | 1350  |
|                                  | 3/4       |  |       | 550   | 775   | 1000  |                               |       | 725   |       | 1100  |
|                                  | 7/8       |  |       |       |       |       |                               |       | 750   | 1000  |       |

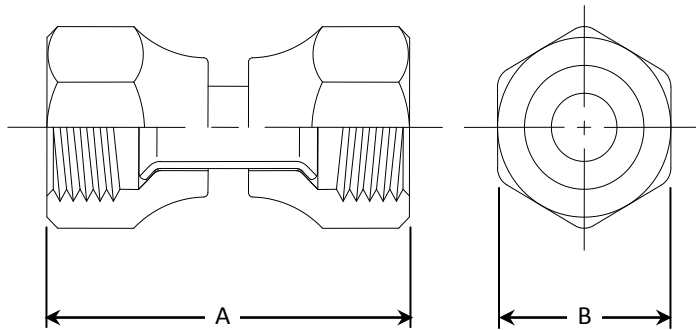
*This specification and all information contained herein is the confidential and exclusive property of BrassCraft Manufacturing, and shall not be disclosed to others without the written consent of BrassCraft. This specification must be returned to BrassCraft if requested.*



# 114FSV Series Swivel Flare Nut Connector

| MATERIAL SPECIFICATIONS |               |
|-------------------------|---------------|
| <b>Fitting Nuts</b>     | C36000 brass  |
| <b>Tube</b>             | C12200 copper |

| PART DIMENSIONS (Inches) |                  |        |        |
|--------------------------|------------------|--------|--------|
| Model                    | Straight Threads | DIM. A | HEX. B |
| 114FSV-4                 | 7/16-20          | 1.35   | 5/8    |
| 114FSV-6                 | 5/8-18           | 1.50   | 13/16  |
| 114FSV-8                 | 3/4-14           | 1.90   | 15/16  |
| 114FSV-10                | 7/8-14           | 2.14   | 1-1/16 |



**Part Listing:**

- 114FSV-4                    1/4" OD Tube, both ends
- 114FSV-4 B                1/4" OD Tube, both ends, bulk
- 114FSV-5                    5/16" OD Tube, both ends
- 114FSV-6                    3/8" OD Tube, both ends
- 114FSV-6 B                3/8" OD Tube, both ends, bulk
- 114FSV-6 P                3/8" OD Tube, both ends, bagged
- 114FSV-8                    1/2" OD Tube, both ends
- 114FSV-8 B                1/2" OD Tube, both ends, bulk
- 114FSV-8 P                1/2" OD Tube, both ends, bagged
- 114FSV-10                 5/8" OD Tube, both ends
- 114FSV-10 P              5/8" OD Tube, both ends, bagged

*This specification and all information contained herein is the confidential and exclusive property of BrassCraft Manufacturing, and shall not be disclosed to others without the written consent of BrassCraft. This specification must be returned to BrassCraft if requested.*

