



Features and Benefits

CONFIGURATIONS

- Upflow / Horizontal
- Downflow

HEAT EXCHANGER DESIGN

- Aluminized crimped no-weld clam shell heat exchanger

CABINET DESIGN

- Compact 33" height
- Standardized widths for easy coil fit

AIR DELIVERY SYSTEM

- ECM™ Variable speed blower motor
- Easily removable slide out blower design

CONTROLS

- Two stage gas valve
- Self diagnostics saves last 5 fault codes regardless of power interruption

VENTING

- Rotatable draft inducer for venting flexibility

INSTALLATION FEATURES

- Left and right utility connections
- Removable floor base for bottom return air
- "L" designated models comply with California's South Coast Air Quality Management district Low NOx requirements
- Zero step horizontal conversion

Note: Not for sale in Canada

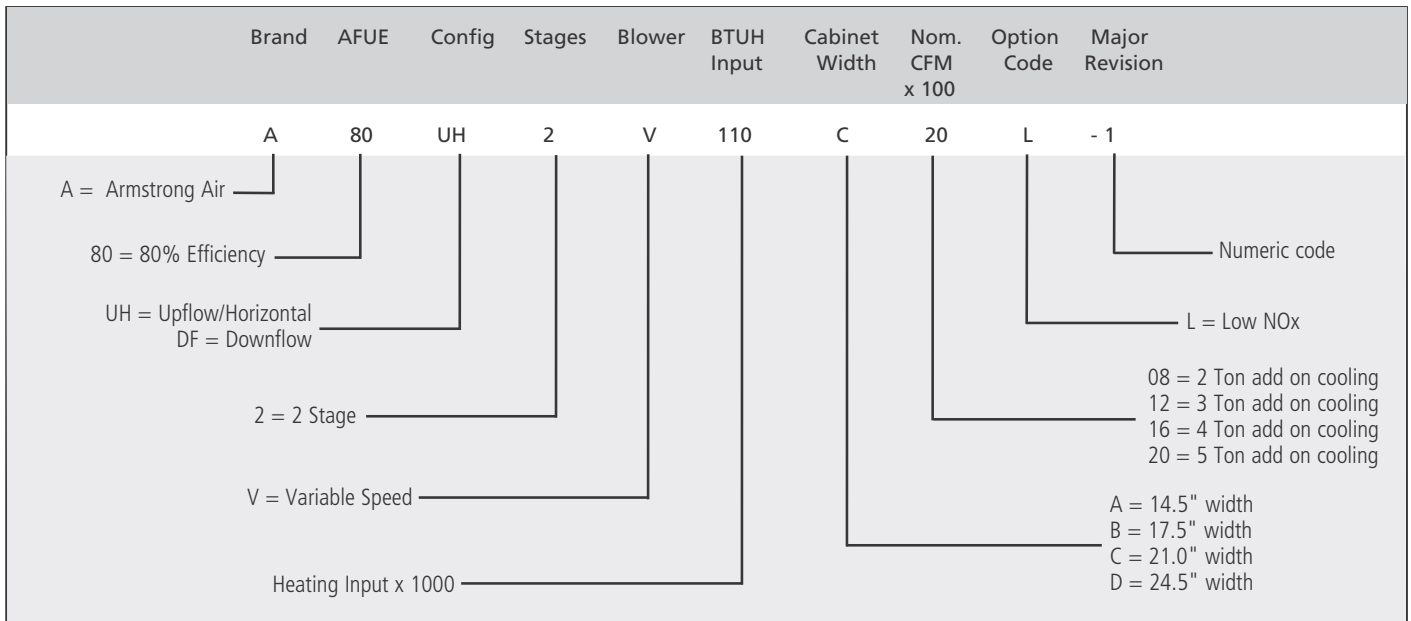


WARRANTY

- 10 year limited parts warranty / lifetime heat exchanger warranty available. See limited warranty document for details.



Model Number Guide



Physical and Electrical Data

	Model	Input (Btuh)	Output (Btuh)	AFUE (ICS)	Nom. Cooling Capacity	Gas Inlet (in.)	Volts/ Hz/ Phase	Max. Time Delay Breaker or Fuse	Nominal F.L.A.	Trans. (V.A.)	Approx. Shipping Weight (lbs.)
Upflow / Horizontal	A80UH2V070A12	66,000	52,800	80.0%	3 tons	1/2	120-60-1	15	7.7	40	128
	A80UH2V090B12	88,000	70,400	80.0%	3 tons	1/2	120-60-1	15	7.7	40	143
	A80UH2V090B16	88,000	70,400	80.0%	4 tons	1/2	120-60-1	20	12.8	40	154
	A80UH2V090C20	88,000	70,400	80.0%	5 tons	1/2	120-60-1	20	12.8	40	173
	A80UH2V110C20	110,000	88,000	80.0%	5 tons	1/2	120-60-1	20	12.8	40	181
	A80UH2V135D20	132,000	105,600	80.0%	5 tons	1/2	120-60-1	20	12.8	40	199
	A80UH2V070A12L	66,000	52,800	80.0%	3 tons	1/2	120-60-1	15	7.7	40	128
	A80UH2V090B16L	88,000	70,400	80.0%	4 tons	1/2	120-60-1	20	7.7	40	154
	A80UH2V110C20L	110,000	88,000	80.0%	5 tons	1/2	120-60-1	20	12.8	40	181
Downflow	A80DF2V070A12	66,000	52,800	80.0%	3 tons	1/2	120-60-1	15	7.7	40	130
	A80DF2V090B16	88,000	70,400	80.0%	4 tons	1/2	120-60-1	20	12.8	40	153
	A80DF2V110C20	110,000	88,000	80.0%	5 tons	1/2	120-60-1	20	12.8	40	173

Note: For vent length and clearances to combustibles, please reference installation instructions.

* 1st Stage is 70% of shown capacities

** Capacities shown are 2nd Stage, 100% capacity

Blower Performance Data

BOTTOM INLET

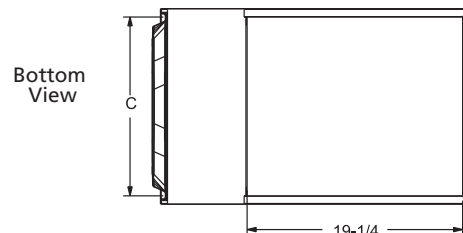
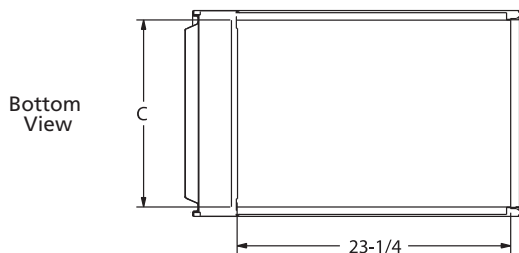
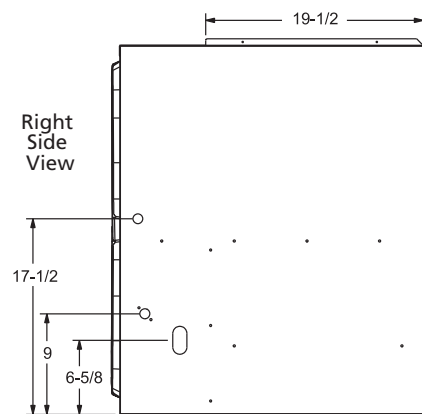
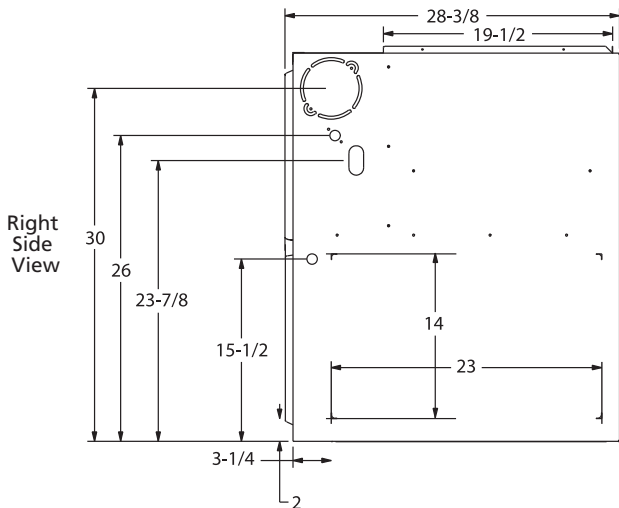
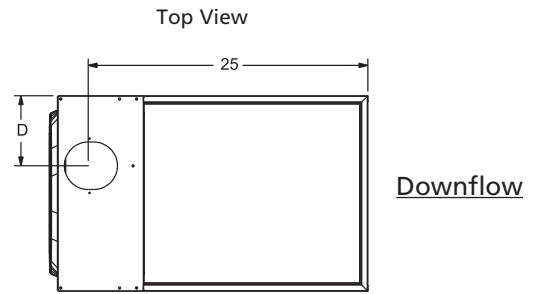
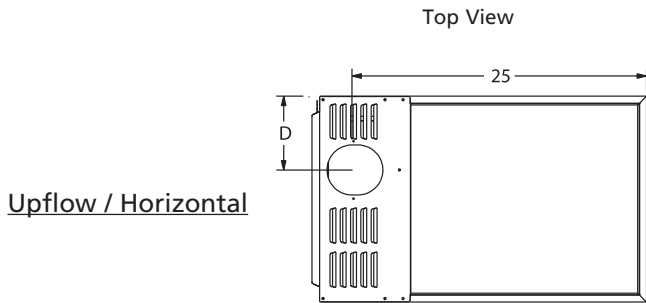
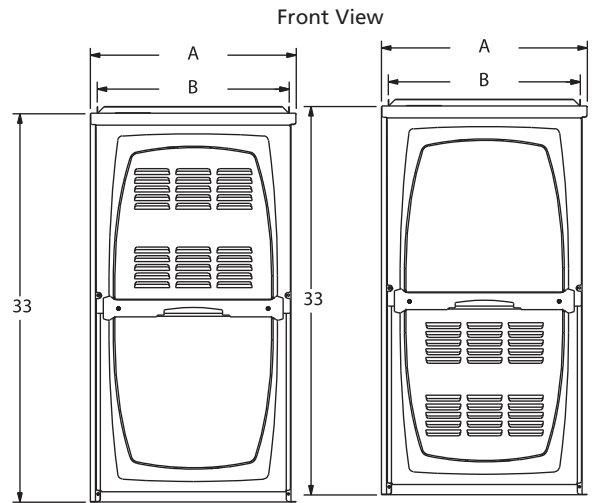
	Model	Motor Size (hp)	Blower Size	Temp Rise F°	Heating CFM @ .50" w.c.				Cooling Stage	Speed Adjustment	Cooling CFM @ .50" w.c.			
					Setting "A"	Setting "B"	Setting "C"	Setting "D"			Setting "A"	Setting "B"	Setting "C"	Setting "D"
Upflow / Horizontal	A80UH2V070A12(L)	1/2 HP	10 x 8	40 - 70	787	990	1027	1129	2nd Stage	+	995	1080	1215	1335
					715	900	934	1026		Norm	920	985	1105	1225
					644	810	841	923		-	820	905	995	1100
				25 - 55	747	829	926	1031	1st Stage	+	735	785	865	965
					679	754	842	937		Norm	690	735	795	885
					611	679	758	843		-	650	685	755	790
	A80UH2V090B12	1/2 HP	10 x 9	40 - 70	1200	1483	1495	1632	2nd Stage	+	995	1140	1255	1390
					1091	1348	1359	1484		Norm	875	1055	1145	1245
					982	1213	1223	1336		-	780	925	1035	1115
				25 - 55	1114	1234	1383	1509	1st Stage	+	625	775	865	875
					1013	1122	1257	1372		Norm	565	675	775	785
					912	1010	1131	1235		-	495	590	675	675
	A80UH2V090B16(L)	1.0 HP	11½ x 9	40 - 70	1187	1518	1529	1646	2nd Stage	+	1030	1335	1545	1755
					1079	1380	1390	1496		Norm	940	1200	1405	1600
					971	1242	1251	1346		-	790	1060	1260	1435
				25 - 55	1096	1136	1398	1539	1st Stage	+	665	890	1035	1210
					996	1033	1271	1399		Norm	600	810	960	1090
					896	930	1144	1259		-	525	690	850	985
	A80UH2V090C20	1.0 HP	11½ x 10	35 - 65	1319	1595	1656	1828	2nd Stage	+	1575	1865	2110	2305
					1199	1450	1505	1662		Norm	1440	1685	1910	2120
					1079	1305	1355	1496		-	1295	1540	1715	1930
				25 - 55	1184	1262	1543	1695	1st Stage	+	1095	1340	1530	1670
					1076	1147	1403	1541		Norm	980	1205	1395	1545
					968	1032	1263	1387		-	870	1055	1215	1380
A80UH2V110C20(L)	1.0 HP	11½ x 10	35 - 65	1546	1935	1950	2175	2nd Stage	+	1537	1709	1908	2079	
				1405	1759	1773	1977		Norm	1401	1564	1714	1877	
				1265	1583	1596	1779		-	1260	1399	1559	1678	
			25 - 55	1431	1497	1783	1977	1st Stage	+	1058	1221	1332	1471	
				1301	1361	1621	1797		Norm	969	1075	1181	1336	
				1171	1225	1459	1617		-	876	979	1068	1169	
A80UH2V135D20	1.0 HP	11½ x 11	40 - 70	1676	1848	1883	2299	2nd Stage	+	1501	1600	1840	2098	
				1524	1680	1712	2090		Norm	1420	1512	1698	1898	
				1372	1512	1541	1881		-	1224	1320	1506	1713	
			25 - 55	1554	1665	1742	2113	1st Stage	+	1026	1122	1326	1509	
				1413	1514	1584	1921		Norm	964	1014	1181	1382	
				1272	1363	1426	1729		-	874	932	1058	1237	
Downflow	A80DF2V070A12	1/2 HP	10 x 8	35 - 65	1007	1036	1192	1241	2nd Stage	+	1015	1101	1241	1427
					915	942	1084	1128		Norm	922	1014	1115	1304
					824	848	976	1015		-	800	900	1024	1169
				25 - 55	891	944	1109	1130	1st Stage	+	667	756	872	1010
					810	858	1008	1027		Norm	618	683	778	924
					729	772	907	924		-	537	619	691	811
	A80DF2V090B16	1.0 HP	11½ x 9	35 - 65	1384	1440	1724	1925	2nd Stage	+	931	1289	1527	1746
					1258	1309	1567	1750		Norm	858	1160	1411	1606
					1132	1178	1410	1575		-	792	1086	1249	1449
				25 - 55	1251	1324	1593	1767	1st Stage	+	742	932	1091	1204
					1137	1204	1448	1606		Norm	710	882	1001	1138
					1023	1084	1303	1445		-	667	848	933	1025
	A80DF2V110C20	1.0 HP	11½ x 10	35 - 65	1497	1607	1901	2041	2nd Stage	+	1501	1757	1913	2120
					1361	1461	1728	1855		Norm	1362	1585	1768	1958
					1225	1315	1555	1670		-	1227	1403	1596	1762
				25 - 55	1381	1460	1737	1905	1st Stage	+	1058	1230	1366	1529
					1255	1327	1579	1732		Norm	976	1117	1252	1402
					1130	1194	1421	1559		-	897	1006	1131	1246

Blower Performance Data SIDE INLET

	Model	Motor Size (hp)	Blower Size	Temp Rise F°	Heating CFM @ ".50 w.c.				Cooling Stage	Speed Adjustment	Cooling CFM @ ".50 in w.c.			
					Setting "A"	Setting "B"	Setting "C"	Setting "D"			Setting "A"	Setting "B"	Setting "C"	Setting "D"
Upflow / Horizontal	A80UH2V070A12(L)	1/2 HP	10 x 8	40 - 70	778	979	1018	1114	2nd Stage	+	1010	1097	1218	1345
					707	890	925	1013		Norm	926	1003	1104	1213
					636	801	833	912		-	820	893	1013	1106
				25 - 55	740	825	950	1044	1st Stage	+	735	767	848	916
					673	750	864	949		Norm	689	726	795	859
					606	675	778	854		-	635	677	727	781
	A80UH2V090B12	1/2 HP	10 x 9	40 - 70	1190	1469	1485	1602	2nd Stage	+	979	1121	1223	1348
					1082	1335	1350	1456		Norm	872	1032	1115	1235
					974	1202	1215	1310		-	774	914	1011	1100
				25 - 55	1086	1194	1360	1469	1st Stage	+	667	765	844	965
					987	1085	1236	1335		Norm	604	684	759	839
					888	977	1112	1202		-	535	653	699	755
	A80UH2V090B16(L)	1.0 HP	11½ x 9	40 - 70	1183	1522	1533	1667	2nd Stage	+	1006	1296	1498	1672
					1075	1384	1394	1515		Norm	897	1158	1346	1499
					968	1246	1255	1364		-	795	1049	1210	1406
				25 - 55	1096	1136	1398	1539	1st Stage	+	638	901	1013	1174
					996	1033	1271	1399		Norm	571	778	930	1040
					896	930	1144	1259		-	529	698	809	956
	A80UH2V090C20	1.0 HP	11½ x 10	35 - 65	1253	1540	1610	1789	2nd Stage	+	1331	1517	1682	1917
					1139	1400	1464	1626		Norm	1176	1388	1543	1737
					1025	1260	1318	1463		-	1038	1221	1387	1581
				25 - 55	1144	1208	1477	1640	1st Stage	+	886	1051	1165	1335
					1040	1098	1343	1491		Norm	814	957	1062	1215
					936	988	1209	1342		-	665	840	945	1089
	A80UH2V110C20(L)	1.0 HP	11½ x 10	35 - 65	1505	1880	1925	2094	2nd Stage	+	1506	1688	1857	2011
					1368	1709	1750	1904		Norm	1375	1526	1687	1843
					1231	1538	1575	1714		-	1235	1382	1503	1640
				25 - 55	1375	1455	1730	1903	1st Stage	+	1019	1160	1286	1420
					1250	1323	1573	1730		Norm	942	1048	1154	1277
					1125	1191	1416	1557		-	836	944	1020	1116
A80UH2V135D20	1.0 HP	11½ x 11	40 - 70	1660	1815	1849	2255	2nd Stage	+	1526	1601	1838	2015	
				1509	1650	1681	2050		Norm	1356	1434	1633	1862	
				1358	1485	1513	1845		-	1239	1315	1519	1689	
			25 - 55	1521	1640	1724	2078	1st Stage	+	1030	1103	1306	1472	
				1383	1491	1567	1889		Norm	958	1005	1176	1356	
				1245	1342	1410	1700		-	843	926	1052	1184	

Dimensions (in.)

	Model	A	B	C	D
Upflow/Horizontal	A80UH2V070A12(L)	14-1/2	13-3/8	13	4-3/4
	A80UH2V090B12	17-1/2	16-3/8	16	6-1/4
	A80UH2V090B16(L)	17-1/2	16-3/8	16	6-1/4
	A80UH2V090C20	21	19-7/8	19-1/2	8
	A80UH2V110C20(L)	21	19-7/8	19-1/2	8
	A80UH2V135D20	24-1/2	23-3/8	23	11-1/8
Downflow	A80DF2V070A12	14-1/2	13-3/8	13	4-3/4
	A80DF2V090B16	17-1/2	16-3/8	16	6-1/4
	A80DF2V110C20	21	19-7/8	19-1/2	8



Accessory List

Catalog Number	Description
External Filter Rack kits	
1.841018	1 pack (16 x 25)
1.841039	10 pack (16 x 25)
Natural to LP kits	
68W76	2-Stage - 80
Return Air Base	
68W61	Return Air Base 14.5 Inch, A Width
68W62	Return Air Base 17.5 Inch, B Width
68W63	Return Air Base 21.0 Inch, C Width
Night Service Kit	
68W81	Two-Stage
Horizontal Suspension Kit	
51W10	80% & 90% Kit
Combustible Floor Base	
11M59	14.5 Inch, A Width
11M60	17.5 Inch, B Width
11M61	21.0 Inch, C Width

Note: For vent length and clearances to combustibles, please reference installation instructions.

All specifications and illustrations
subject to change without notice
and without incurring obligations.



(800) 448-5872
www.armstrongair.com