

# Arrowhead Brass Products



For over 70 years, Arrowhead Brass has manufactured the Highest Quality American Made Products available anywhere in the world. We take pride in using only top quality materials utilizing red brass, stainless steel handles & seat washer screws, and state-of-the-art seals. Also featured in this catalog we have added high-quality Champion brass products to the Arrowhead line-up.

**Look inside!**



**NEW** ARROW-BREAKER™

No-kink Hose Bibb with Built-In Vacuum Breaker  
(Thread-On Vacuum Breaker NOT required)



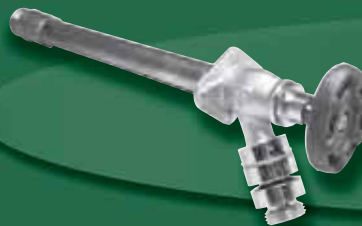
**NEW**

Quality Rough Brass Products  
(New O-Ring Bonnet Seal)



**NEW**

All Brass Pressure Reducing Valves



**NEW**

Frost Free Hydrants  
Now Available with ARROW-BREAKER™  
& Rubberized Coated Handles



**Now, Better Than Ever!**  
Reliable – Proven – Trusted – Since 1936

Arrowhead Brass Products is a subsidiary of Champion-Arrowhead, LLC

# Arrowhead Brass Products



## NEW PRODUCTS

### MORE INNOVATION FROM THE COMPANY YOU TRUST

Arrowhead Brass Products continues its reputation as a company that introduces new products focused on productivity and reduction of the "Total Cost of Each Job" like the NEW Arrow-Breaker.™

### BETTER PRODUCTS **NEW** O-Ring Bonnet

An exciting improvement has replaced packing nut products with our new-style one-piece "O-Ring" bonnet seal significantly improving the reliability and operation of these products. No more over-tightening to stop leaks!

### AN ARROWHEAD EXCLUSIVE:

Now many of our Frost Free Hydrants are available with the SHARKBITE® Push-Fittings™ option pre-installed making it the fastest, easiest way to connect our hydrants to copper, CTS, CPVC and PEX pipe with no soldering, clamps unions or glue.\* Available in 1/2" and 3/4" connection sizes.



### ARROW-BREAKER™ HOSE BIBB WITH INTEGRATED (BUILT-IN) VACUUM BREAKER:

- Thread-on vacuum breaker not required.
- Guards against destructive water hammer.
- More Flow than a standard Hose Bibb.
- No annoying noise when operating or connected to a hose.
- Made in USA.

### SEE PRODUCTS FROM OUR CHAMPION BRASS DIVISION:

- Manual Straight and Angle Valves.
- Manual and Automatic (Electric) Anti-Siphon Valves.
- Replacement Actuators for Automatic Anti-Siphon Valves.
- Actuators to convert Manual Valves to Automatic Operation.
- In-Line Automatic (Electric) Globe Valves.
- Brass Vacuum Breakers, Coupler Valves & Accessories.
- Hose & Pipe Adapters and Brass Slip Joints.



### **NEW** O-Ring Bonnet ARROW-BREAKER™

Arrow-Breaker No-Kink Hose Bibbs feature an integral (built-in) vacuum breaker. Listed with the City of Los Angeles, IAPMO and ASSE-1011 listed. At an additional charge, specify LK for Loose Key Lockshield.

261	No-Kink 1/2" MIP x 3/4" Hose Thread ARROW-BREAKER
361	No-Kink 3/4" MIP x 3/4" Hose Thread ARROW-BREAKER
262CC	No-Kink 1/2" or 3/4" Copper Sweat x 3/4" Hose Thread ARROW-BREAKER
264CC	No-Kink 1/2" Copper Compression x 3/4" Hose Thread ARROW-BREAKER
263	No-Kink 1/2" FIP x 3/4" Hose Thread ARROW-BREAKER
363	No-Kink 3/4" FIP x 3/4" Hose Thread ARROW-BREAKER
265	Sillcock 1/2" FIP x 3/4" Hose Thread ARROW-BREAKER
365	Sillcock 3/4" FIP x 3/4" Hose Thread ARROW-BREAKER
265SW	Sillcock 1/2" Copper Sweat x 3/4" Hose Thread ARROW-BREAKER
365SW	Sillcock 3/4" Copper Sweat x 3/4" Hose Thread ARROW-BREAKER
269	Sillcock PEX Connection x 3/4" Hose Thread ARROW-BREAKER



### **NEW**

## PRESSURE REDUCING VALVES

Arrowhead Brass pressure reducing valve reduces excessive incoming water pressure to appropriate, safe levels. ASSE-1003, CSA-B356, ANSI/NSF 61-8.

501	Single Union 1/2"
502	Single Union 3/4"
503	Single Union 1"
510	Single Union Compact with Tap 1/2"
511	Single Union Compact with Tap 3/4"
512	Single Union Compact with Tap 1"
520	Double Union Compact with Tap 1/2"
521	Double Union Compact with Tap 3/4"
522	Double Union Compact with Tap 1"

### MORE NEW PRODUCTS...

SRH & SYH Series Frost Free Sanitary Roof & Yard Hydrants.

- Does not require a drain.
- Self-contained.
- Won't contaminate water supply, see page 11 for details.



\*SHARKBITE® is a registered trademark of Cash Acme.





460 SERIES



**NEW O-Ring Bonnet**  
**ARROW-BREAKER™ FROST FREE**

Arrow-Breaker Frost Free Valves feature an integral (built-in) vacuum breaker. Listed with the City of Los Angeles, IAPMO and ASSE-1019 listed.

- 465-04 1/2" FIP or 3/4" MIP ARROW-BREAKER Anti-Siphon Frost Free Hydrant x 4"
- 465-06 1/2" FIP or 3/4" MIP ARROW-BREAKER Anti-Siphon Frost Free Hydrant x 6"
- 465-08 1/2" FIP or 3/4" MIP ARROW-BREAKER Anti-Siphon Frost Free Hydrant x 8"
- 465-10 1/2" FIP or 3/4" MIP ARROW-BREAKER Anti-Siphon Frost Free Hydrant x 10"
- 465-12 1/2" FIP or 3/4" MIP ARROW-BREAKER Anti-Siphon Frost Free Hydrant x 12"
- 465-14 1/2" FIP or 3/4" MIP ARROW-BREAKER Anti-Siphon Frost Free Hydrant x 14"
- 466-04 1/2" Copper Sweat or 1/2" MIP ARROW-BREAKER Anti-Siphon Frost Free Hydrant x 4"
- 466-06 1/2" Copper Sweat or 1/2" MIP ARROW-BREAKER Anti-Siphon Frost Free Hydrant x 6"
- 466-08 1/2" Copper Sweat or 1/2" MIP ARROW-BREAKER Anti-Siphon Frost Free Hydrant x 8"
- 466-10 1/2" Copper Sweat or 1/2" MIP ARROW-BREAKER Anti-Siphon Frost Free Hydrant x 10"
- 466-12 1/2" Copper Sweat or 1/2" MIP ARROW-BREAKER Anti-Siphon Frost Free Hydrant x 12"
- 466-14 1/2" Copper Sweat or 1/2" MIP ARROW-BREAKER Anti-Siphon Frost Free Hydrant x 14"
- 469-04 PEX ARROW-BREAKER Anti-Siphon Frost Free Hydrant x 4"
- 469-06 PEX ARROW-BREAKER Anti-Siphon Frost Free Hydrant x 6"
- 469-08 PEX ARROW-BREAKER Anti-Siphon Frost Free Hydrant x 8"
- 469-10 PEX ARROW-BREAKER Anti-Siphon Frost Free Hydrant x 10"
- 469-12 PEX ARROW-BREAKER Anti-Siphon Frost Free Hydrant x 12"
- 469-14 PEX ARROW-BREAKER Anti-Siphon Frost Free Hydrant x 14"
- 463-04 3/4" Shark Bite ARROW-BREAKER Anti-Siphon Frost Free Hydrant x 4"
- 463-06 3/4" Shark Bite ARROW-BREAKER Anti-Siphon Frost Free Hydrant x 6"
- 463-08 3/4" Shark Bite ARROW-BREAKER Anti-Siphon Frost Free Hydrant x 8"
- 463-10 3/4" Shark Bite ARROW-BREAKER Anti-Siphon Frost Free Hydrant x 10"
- 463-12 3/4" Shark Bite ARROW-BREAKER Anti-Siphon Frost Free Hydrant x 12"
- 463-14 3/4" Shark Bite ARROW-BREAKER Anti-Siphon Frost Free Hydrant x 14"
- 464-04 1/2" Shark Bite ARROW-BREAKER Anti-Siphon Frost Free Hydrant x 4"
- 464-06 1/2" Shark Bite ARROW-BREAKER Anti-Siphon Frost Free Hydrant x 6"
- 464-08 1/2" Shark Bite ARROW-BREAKER Anti-Siphon Frost Free Hydrant x 8"

- 464-10 1/2" Shark Bite ARROW-BREAKER Anti-Siphon Frost Free Hydrant x 10"
- 464-12 1/2" Shark Bite ARROW-BREAKER Anti-Siphon Frost Free Hydrant x 12"
- 464-14 1/2" Shark Bite ARROW-BREAKER Anti-Siphon Frost Free Hydrant x 14"



301BV  
302BV

255BV  
355BV

251BV  
351BV

253BV  
353BV

252CCBV

**NEW BALL VALVES**

Arrowhead has ADA (American Disabilities Act) Ball Valve Hose Bibbs with coated handles and bi-directional operation.

- 251BV No-Kink Hose Bibb Ball Valve 1/2" MIP
- 351BV No-Kink Hose Bibb Ball Valve 3/4" MIP
- 253BV No-Kink Hose Bibb Ball Valve 1/2" FIP
- 353BV No-Kink Hose Bibb Ball Valve 3/4" FIP
- 252CCBV No-Kink Hose Bibb Ball Valve 1/2" Copper Sweat
- 255BV Sillcock Ball Valve 1/2" FIP
- 355BV Sillcock Ball Valve 3/4" FIP
- 301BV Standard Hose Bibb Ball Valve 1/2" MIP
- 302BV Standard Hose Bibb Ball Valve 3/4" MIP



251LK  
351LK



253LK  
353LK

**NEW O-Ring Bonnet**  
**NO-KINK HOSE BIBBS (LOOSE KEY)**

Factory installed Loose Key Lockshield. Key Optional.

- 251LK 1/2" MIP x 3/4" Hose Thread, Loose Key
- 351LK 3/4" MIP x 3/4" Hose Thread, Loose Key
- 253LK 1/2" FIP x 3/4" Hose Thread, Loose Key
- 353LK 3/4" FIP x 3/4" Hose Thread, Loose Key

**DEFINITION of ABBREVIATIONS after model numbers**

- B – Boxed
- PB – Polished Brass
- BC – Bar Coded
- PE – Plain End
- BFP – Vacuum Breaker
- RB – Rough Brass Finish
- BULK – Bulk Packed no packaging
- SAT – Satin
- CC – Copper Connection
- SC – Self-Closing
- CHR – Chrome
- SD – Self-Draining
- K – Kit
- SW – Sweat Connection
- LK – Loose Key
- TH – Tee Handle
- LLB – Log Lighter Bar
- V – Vertical
- LS – Less Key
- WH – Wheel Handle
- OH – Oval Handle



**NEW O-Ring Bonnet**  
**NO-KINK HOSE BIBBS**

Arrowhead Hose Bibbs feature heavy pattern rough brass, o-ring seal bonnet and coated tee handles.

- 251 1/2" MIP x 3/4" Hose Thread
- 351 3/4" MIP x 3/4" Hose Thread
- 253 1/2" FIP x 3/4" Hose Thread
- 353 3/4" FIP x 3/4" Hose Thread
- 252CC 1/2" or 3/4" Copper Sweat x 3/4" Hose Thread
- 254CC 1/2" Copper Compression x 3/4" Hose Thread



**NEW O-Ring Bonnet**  
**NO-KINK HOSE BIBBS (ANTI-SIPHON)**

IAPMO & ASSE 1011 listed.

- 251BFP 1/2" MIP x 3/4" Hose Thread, VB
- 351BFP 3/4" MIP x 3/4" Hose Thread, VB
- 253BFP 1/2" FIP x 3/4" Hose Thread, VB
- 353BFP 3/4" FIP x 3/4" Hose Thread, VB
- 252CCBFP 1/2" or 3/4" Copper Sweat x 3/4" Hose Thread, VB
- 254CCBFP 1/2" Copper Compression x 3/4" Hose Thread, VB

**DEFINITION of ABBREVIATIONS after model numbers**

- B – Boxed
- BC – Bar Coded
- BFP – Vacuum Breaker
- BULK – Bulk Packed no packaging
- CC – Copper Connection
- CHR – Chrome
- K – Kit
- LK – Loose Key
- LLB – Log Lighter Bar
- LS – Less Key
- OH – Oval Handle
- PB – Polished Brass
- PE – Plain End
- RB – Rough Brass Finish
- SAT – Satin
- SC – Self-Closing
- SD – Self-Draining
- SW – Sweat Connection
- TH – Tee Handle
- V – Vertical
- WH – Wheel Handle



**NEW O-Ring Bonnet**  
**STANDARD HOSE BIBBS**

Arrowhead Hose Bibbs feature heavy pattern rough brass, o-ring seal bonnet and coated tee handles.

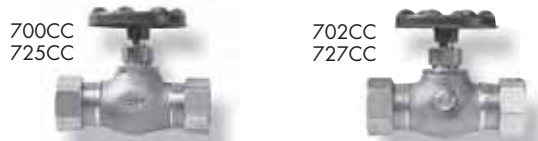
- 201 1/2" MIP x 3/4" Hose Thread S.O.T.
- 202 3/4" MIP x 3/4" Hose Thread S.O.T.
- 301 1/2" MIP x 3/4" Hose Thread S.S.S.
- 302 3/4" MIP x 3/4" Hose Thread S.S.S.



**STANDARD HOSE BIBBS (SELF CLOSING)**

Ideal for public water access applications.

- 301SC 1/2" MIP x 3/4" Hose Thread S.S.S., Self-Closing
- 302SC 3/4" MIP x 3/4" Hose Thread S.S.S., Self-Closing



**COPPER COMPRESSION STOP VALVES**

- 700CC 1/2"
- 725CC 3/4"
- 702CC 1/2" Stop & Waste
- 727CC 3/4" Stop & Waste



**STRAIGHT STOP VALVES**

- 800 1/2" FIP Straight Stop
- 825 3/4" FIP Straight Stop
- 800SW 1/2" Copper Sweat Straight Stop
- 825SW 3/4" Copper Sweat Straight Stop
- 802 1/2" FIP Straight Stop and Waste
- 827 3/4" FIP Straight Stop and Waste
- 802SW 1/2" Copper Sweat Straight Stop & Waste
- 827SW 3/4" Copper Sweat Straight Stop and Waste





**NEW O-Ring Bonnet**

**SATIN WASHING MACHINE VALVES**

- 221CC 1/2" Copper Compression x 3/4" Hose Thread, Satin
- 247 1/2" FIP x 3/4" Hose, Front Handle
- 248 1/2" FIP x 1/2" MIP with Rev. Bypass with 3/4" Hose Thread
- 249 1/2" FIP x 3/4" Hose, Top Handle
- 250 1/2" FIP x 1/2" MIP with 3/4" Hose on bottom



**GAS LOG LIGHTER VALVES**

All Arrowhead Log Lighter Valves come with Adjustable Chrome Plated Flange, 2-1/4" Loose Key, with Rough Brass Body. CSA listed in the U.S. and Canada. IAPMO listed.

- 258 Log Lighter Valve 1/2" FIP Straight Valve with Chrome Flange & Key
- 259 Log Lighter Valve 1/2" FIP Angle Valve with Chrome Flange & Key
- 258LLB Log Lighter Bar
- 44PB Part (Polished Brass Flange)
- 51PB Part (Polished Brass Log Lighter Key)



**HEARTHLIGHT LOG LIGHTER KITS**

The Arrowhead HearthLIGHT log lighter kits come with our Log Lighter Valve with Adjustable Chrome Plated Flange, 2-1/4" Loose Key, and our 12" Heavy Duty Cast Iron Log Lighter Bar with ledged design to eliminate falling ashes from blocking the orifices. Each bar has three 1/2" I.P.S. inlets to fit most applications. For natural gas only. CSA listed in the U.S. and Canada. IAPMO listed.

- 258K 1/2" F.I.P. Straight Pattern Valve with Trim and Log Lighter Bar
- 259K 1/2" F.I.P. Angle Pattern Valve with Trim and Log Lighter Bar

**EVAPORATIVE COOLER FAUCETS**

- 240 3/4" FIP Inlet x 3/4" Hose with 1/8" Tap
- 245 3/4" Hose Inlet x 3/4" Hose with 1/8" Tap



**NEW O-Ring Bonnet**

**SOLID FLANGE SILL FAUCETS**

**OPTIONS:** At an additional charge, specify SAT for Satin or CHR for Chrome after part number.

- 255 1/2" FIP x 3/4" Hose Thread with Oval Handle
- 355 3/4" FIP x 3/4" Hose Thread with Oval Handle
- 255SW 1/2" or 3/4" Copper Sweat x 3/4" Hose Thread with Oval Handle



**NEW O-Ring Bonnet**

**SOLID FLANGE SILL FAUCETS (LOOSE KEY)**

Factory installed Loose Key Lockshield. Key Optional.

**OPTIONS:** At an additional charge, specify SAT for Satin, CHR for Chrome, or BFP for Backflow Preventer after part number.

- 255LK 1/2" FIP x 3/4" Hose Thread, Loose Key
- 355LK 3/4" FIP x 3/4" Hose Thread, Loose Key



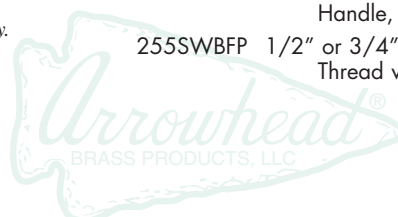
**NEW O-Ring Bonnet**

**ANTI-SIPHON SILL FAUCETS**

Factory Installed Vandal-Resistant Vacuum Breakers with Protective Plastic Cap. IAPMO & ASSE 1011 listed.

**OPTIONS:** At an additional charge, specify SAT for Satin, CHR for Chrome, or LK for Loose Key Lockshield after part number.

- 255BFP 1/2" FIP x 3/4" Hose Thread with Oval Handle, VB
- 355BFP 3/4" FIP x 3/4" Hose Thread with Oval Handle, VB
- 255SWBFP 1/2" or 3/4" Copper Sweat x 3/4" Hose Thread with Oval Handle, VB



255BFPSD  
355BFPSD



**NEW O-Ring Bonnet**

**SELF DRAINING SILL FAUCETS  
(SELF DRAINING ANTI-SIPHON)**

IAPMO & ASSE 1011 listed.

- 255BFPSD 1/2" FIP x 3/4" Hose Thread with Oval Handle, Self-Draining VB
- 355BFPSD 3/4" FIP x 3/4" Hose Thread with Oval Handle, VB, Self-Draining

**METER VALVES**

Flared Angle Pattern Stop and Waste Valves.

- 851 3/4" Flared Tube x 3/4" FIP Stop and Waste
- 871 1" Flared Tube x 3/4" FIP Stop and Waste

851  
871



900  
925  
935  
940



950  
975  
980



**BENT NOSE GARDEN VALVES**

**OPTIONS:** At an additional charge, specify SAT for Satin or CHR for Chrome after part number.

- 900 1/2" FIP x 3/4" Hose Thread
- 901 1/2" FIP x 3/4" Hose Thread 2-PIECE FLOATING STEM
- 925 3/4" FIP x 3/4" Hose Thread
- 926 3/4" FIP x 3/4" Hose Thread 2-PIECE FLOATING STEM
- 930 1" FIP x 3/4" Hose Thread
- 931 1" FIP x 3/4" Hose Thread 2-PIECE FLOATING STEM
- 935 1" FIP x 1" Hose Thread
- 936 1" FIP x 1" Hose Thread 2-PIECE FLOATING STEM
- 940 1" FIP x 1" Hose Thread FULL PORT
- 950 1/2" FIP x 3/4" Hose Thread with Inverted Nose
- 951 1/2" FIP x 3/4" Hose Thread with Inverted Nose 2-PIECE FLOATING STEM
- 975 3/4" FIP x 3/4" Hose Thread with Inverted Nose
- 976 3/4" FIP x 3/4" Hose Thread with Inverted Nose 2-PIECE FLOATING STEM
- 980 1" FIP x 3/4" Hose Thread with Inverted Nose
- 981 1" FIP x 3/4" Hose Thread with Inverted Nose 2-PIECE FLOATING STEM

**BENT NOSE GARDEN VALVES  
(LOOSE KEY)**

**OPTIONS:** At an additional charge, specify SAT for Satin, CHR for Chrome, or BFP for Backflow Preventer after part number.

- 900LK 1/2" FIP x 3/4" Hose Thread, Loose Key
- 925LK 3/4" FIP x 3/4" Hose Thread, Loose Key
- 930LK 1" FIP x 3/4" Hose Thread, Loose Key



900LK  
925LK  
930LK

**BENT NOSE GARDEN VALVES  
(ANTI-SIPHON)**

**OPTIONS:** At an additional charge, specify SAT for Satin, CHR for Chrome, or LK for Loose Key Lockshield after part number.

- 900BFP 1/2" FIP x 3/4" Hose Thread, VB
- 925BFP 3/4" FIP x 3/4" Hose Thread, VB
- 930BFP 1" FIP x 3/4" Hose Thread, VB



900BFP  
925BFP  
930BFP



221  
223



222  
220



221CCRB

**NEW O-Ring Bonnet**

**BOILER DRAINS**

- 221 1/2" MIP x 3/4" Hose Thread
- 223 3/4" MIP x 3/4" Hose Thread
- 222 1/2" FIP x 3/4" Hose Thread
- 220 3/4" FIP x 3/4" Hose Thread
- 221CC ROUGH 1/2" Copper Compression x 3/4" Hose Thread, Rough Brass

58ABP



59ABP



**VACUUM BREAKERS**

ASSE 1011 and IAPMO listed.

**OPTIONS:** At an additional charge, specify CHR for Chrome after part number.

- 58ABP 3/4" Female Hose Connection Add-On Vacuum Breaker with Breakaway Set Screw
- 59ABP 3/4" Female Hose Connection Add-On SELF-DRAINING Vacuum Breaker with Breakaway Set Screw





450 SERIES

**NEW** O-Ring Bonnet

**STANDARD FROST FREE  
LAWN FAUCETS (450 SERIES)**



496BFP

496BFPV

**NEW** O-Ring Bonnet

**HOT & COLD ANTI-SIPHON  
FROST FREE LAWN FAUCETS**



**OPTIONS:** At an additional charge, specify LK for Loose Key Lockshield.

- 455-04 1/2" FIP or 3/4" MIP x 4"
- 455-06 1/2" FIP or 3/4" MIP x 6"
- 455-08 1/2" FIP or 3/4" MIP x 8"
- 455-10 1/2" FIP or 3/4" MIP x 10"
- 455-12 1/2" FIP or 3/4" MIP x 12"
- 455-14 1/2" FIP or 3/4" MIP x 14"
- 456-04 1/2" Copper Sweat or 1/2" MIP x 4"
- 456-06 1/2" Copper Sweat or 1/2" MIP x 6"
- 456-08 1/2" Copper Sweat or 1/2" MIP x 8"
- 456-10 1/2" Copper Sweat or 1/2" MIP x 10"
- 456-12 1/2" Copper Sweat or 1/2" MIP x 12"
- 456-14 1/2" Copper Sweat or 1/2" MIP x 14"
- 459-04 PEX x 4"
- 459-06 PEX x 6"
- 459-08 PEX x 8"
- 459-10 PEX x 10"
- 459-12 PEX x 12"
- 459-14 PEX x 14"
- 453-04 3/4" Shark Bite x 4"
- 453-06 3/4" Shark Bite x 6"
- 453-08 3/4" Shark Bite x 8"
- 453-10 3/4" Shark Bite x 10"
- 453-12 3/4" Shark Bite x 12"
- 453-14 3/4" Shark Bite x 14"
- 454-04 1/2" Shark Bite x 4"
- 454-06 1/2" Shark Bite x 6"
- 454-08 1/2" Shark Bite x 8"
- 454-10 1/2" Shark Bite x 10"
- 454-12 1/2" Shark Bite x 12"
- 454-14 1/2" Shark Bite x 14"

Perfect for washing lawn furniture, decks and siding in time for summer. During winter months install in your garage to wash your pets and cars! IAPMO & ASSE 1019 listed.

**OPTION:** Specify V for Vertical Model after part number.

- 496BFP04 Hot/Cold 1/2" Copper Sweat or 1/2" MIP x 4"
- 496BFP06 Hot/Cold 1/2" Copper Sweat or 1/2" MIP x 6"
- 496BFP08 Hot/Cold 1/2" Copper Sweat or 1/2" MIP x 8"
- 496BFP10 Hot/Cold 1/2" Copper Sweat or 1/2" MIP x 10"
- 496BFP12 Hot/Cold 1/2" Copper Sweat or 1/2" MIP x 12"
- 496BFP14 Hot/Cold 1/2" Copper Sweat or 1/2" MIP x 14"
- 499BFP04 Hot/Cold PEX x 4"
- 499BFP06 Hot/Cold PEX x 6"
- 499BFP08 Hot/Cold PEX x 8"
- 499BFP10 Hot/Cold PEX x 10"
- 499BFP12 Hot/Cold PEX x 12"
- 499BFP14 Hot/Cold PEX x 14"
- 493BFP04 3/4" Shark Bite Hot/Cold x 4"
- 493BFP06 3/4" Shark Bite Hot/Cold x 6"
- 493BFP08 3/4" Shark Bite Hot/Cold x 8"
- 493BFP10 3/4" Shark Bite Hot/Cold x 10"
- 493BFP12 3/4" Shark Bite Hot/Cold x 12"
- 493BFP14 3/4" Shark Bite Hot/Cold x 14"
- 494BFP04 1/2" Shark Bite Hot/Cold x 4"
- 494BFP06 1/2" Shark Bite Hot/Cold x 6"
- 494BFP08 1/2" Shark Bite Hot/Cold x 8"
- 494BFP10 1/2" Shark Bite Hot/Cold x 10"
- 494BFP12 1/2" Shark Bite Hot/Cold x 12"
- 494BFP14 1/2" Shark Bite Hot/Cold x 14"



**DEFINITION of ABBREVIATIONS after model numbers**

- B – Boxed
- BC – Bar Coded
- BFP – Vacuum Breaker
- BULK – Bulk Packed no packaging
- CC – Copper Connection
- CHR – Chrome
- K – Kit
- LK – Loose Key
- LLB – Log Lighter Bar
- LS – Less Key
- OH – Oval Handle
- PB – Polished Brass
- PE – Plain End
- RB – Rough Brass Finish
- SAT – Satin
- SC – Self-Closing
- SD – Self-Draining
- SW – Sweat Connection
- TH – Tee Handle
- V – Vertical
- WH – Wheel Handle



420BFP SERIES



480BFP SERIES

**NEW** O-Ring Bonnet

**ANTI-SIPHON FROST FREE  
LAWN FAUCETS (420 SERIES)**



With Integral Vacuum Breaker and Vandal-Resistant Vented Cap. ASSE 1019 and IAPMO listed. New Rubberized Coated Handle.

**OPTIONS:** At an additional charge, specify LK for Loose Key Lockshield.

- 425BFPO4 1/2" FIP or 3/4" MIP x 4"
- 425BFPO6 1/2" FIP or 3/4" MIP x 6"
- 425BFPO8 1/2" FIP or 3/4" MIP x 8"
- 425BFP10 1/2" FIP or 3/4" MIP x 10"
- 425BFP12 1/2" FIP or 3/4" MIP x 12"
- 425BFP14 1/2" FIP or 3/4" MIP x 14"
- 426BFPO4 1/2" Copper Sweat or 1/2" MIP x 4"
- 426BFPO6 1/2" Copper Sweat or 1/2" MIP x 6"
- 426BFPO8 1/2" Copper Sweat or 1/2" MIP x 8"
- 426BFP10 1/2" Copper Sweat or 1/2" MIP x 10"
- 426BFP12 1/2" Copper Sweat or 1/2" MIP x 12"
- 426BFP14 1/2" Copper Sweat or 1/2" MIP x 14"
- 429BFPO4 PEX x 4"
- 429BFPO6 PEX x 6"
- 429BFPO8 PEX x 8"
- 429BFP10 PEX x 10"
- 429BFP12 PEX x 12"
- 429BFP14 PEX x 14"
- 423BFPO4 3/4" Shark Bite x 4"
- 423BFPO6 3/4" Shark Bite x 6"
- 423BFPO8 3/4" Shark Bite x 8"
- 423BFP10 3/4" Shark Bite x 10"
- 423BFP12 3/4" Shark Bite x 12"
- 423BFP14 3/4" Shark Bite x 14"
- 424BFPO4 1/2" Shark Bite x 4"
- 424BFPO6 1/2" Shark Bite x 6"
- 424BFPO8 1/2" Shark Bite x 8"
- 424BFP10 1/2" Shark Bite x 10"
- 424BFP12 1/2" Shark Bite x 12"
- 424BFP14 1/2" Shark Bite x 14"

**NEW** O-Ring Bonnet

**ANTI-SIPHON FROST FREE  
LAWN FAUCETS (480 SERIES)**



Similar to our 455BFP & 456BFP series, this valve has less parts and still incorporates our factory installed vacuum breaker and self-draining features. ASSE 1019 and IAPMO listed. New Rubberized Coated Handle.

**OPTIONS:** At an additional charge, specify LK for Loose Key Lockshield.

- 485BFPO4 1/2" FIP or 3/4" MIP x 4"
- 485BFPO6 1/2" FIP or 3/4" MIP x 6"
- 485BFPO8 1/2" FIP or 3/4" MIP x 8"
- 485BFP10 1/2" FIP or 3/4" MIP x 10"
- 485BFP12 1/2" FIP or 3/4" MIP x 12"
- 485BFP14 1/2" FIP or 3/4" MIP x 14"
- 486BFPO2 1/2" Copper Sweat or 1/2" MIP x 2"
- 486BFPO4 1/2" Copper Sweat or 1/2" MIP x 4"
- 486BFPO6 1/2" Copper Sweat or 1/2" MIP x 6"
- 486BFPO8 1/2" Copper Sweat or 1/2" MIP x 8"
- 486BFP10 1/2" Copper Sweat or 1/2" MIP x 10"
- 486BFP12 1/2" Copper Sweat or 1/2" MIP x 12"
- 486BFP14 1/2" Copper Sweat or 1/2" MIP x 14"
- 489BFPO4 PEX x 4"
- 489BFPO6 PEX x 6"
- 489BFPO8 PEX x 8"
- 489BFP10 PEX x 10"
- 489BFP12 PEX x 12"
- 489BFP14 PEX x 14"
- 483BFPO4 3/4" Shark Bite x 4"
- 483BFPO6 3/4" Shark Bite x 6"
- 483BFPO8 3/4" Shark Bite x 8"
- 483BFP10 3/4" Shark Bite x 10"
- 483BFP12 3/4" Shark Bite x 12"
- 483BFP14 3/4" Shark Bite x 14"
- 484BFPO4 1/2" Shark Bite x 4"
- 484BFPO6 1/2" Shark Bite x 6"
- 484BFPO8 1/2" Shark Bite x 8"
- 484BFP10 1/2" Shark Bite x 10"
- 484BFP12 1/2" Shark Bite x 12"
- 484BFP14 1/2" Shark Bite x 14"



460 SERIES

**NEW** O-Ring Bonnet

**ARROW-BREAKER™ FROST FREE**



See New Products on Page 3 for a complete listing of Arrow-Breaker™ Frost Free Hydrants





450BFP SERIES

**NEW O-Ring Bonnet**

**ANTI-SIPHON FROST FREE  
LAWN FAUCETS (450 APACHE SERIES)**



With Integral Vacuum Breaker with Vandal-Resistant Vented Cap, Self-Draining. ASSE 1019 and IAPMO listed.

**OPTIONS:** At an additional charge, specify LK for Loose Key Lockshield.

- 455BFP04 Apache 1/2" FIP or 3/4" MIP x 4"
- 455BFP06 Apache 1/2" FIP or 3/4" MIP x 6"
- 455BFP08 Apache 1/2" FIP or 3/4" MIP x 8"
- 455BFP10 Apache 1/2" FIP or 3/4" MIP x 10"
- 455BFP12 Apache 1/2" FIP or 3/4" MIP x 12"
- 455BFP14 Apache 1/2" FIP or 3/4" MIP x 14"
- 456BFP04 Apache 1/2" Copper Sweat or 1/2" MIP x 4"
- 456BFP06 Apache 1/2" Copper Sweat or 1/2" MIP x 6"
- 456BFP08 Apache 1/2" Copper Sweat or 1/2" MIP x 8"
- 456BFP10 Apache 1/2" Copper Sweat or 1/2" MIP x 10"
- 456BFP12 Apache 1/2" Copper Sweat or 1/2" MIP x 12"
- 456BFP14 Apache 1/2" Copper Sweat or 1/2" MIP x 14"
- 459BFP04 Apache PEX x 4"
- 459BFP06 Apache PEX x 6"
- 459BFP08 Apache PEX x 8"
- 459BFP10 Apache PEX x 10"
- 459BFP12 Apache PEX x 12"
- 459BFP14 Apache PEX x 14"
- 453BFP04 3/4" Shark Bite Apache x 4"
- 453BFP06 3/4" Shark Bite Apache x 6"
- 453BFP08 3/4" Shark Bite Apache x 8"
- 453BFP10 3/4" Shark Bite Apache x 10"
- 453BFP12 3/4" Shark Bite Apache x 12"
- 453BFP14 3/4" Shark Bite Apache x 14"
- 454BFP04 1/2" Shark Bite Apache x 4"
- 454BFP06 1/2" Shark Bite Apache x 6"
- 454BFP08 1/2" Shark Bite Apache x 8"
- 454BFP10 1/2" Shark Bite Apache x 10"
- 454BFP12 1/2" Shark Bite Apache x 12"
- 454BFP14 1/2" Shark Bite Apache x 14"



**DEFINITION of ABBREVIATIONS after model numbers**

- B – Boxed
- BC – Bar Coded
- BFP – Vacuum Breaker
- BULK – Bulk Packed no packaging
- CC – Copper Connection
- CHR – Chrome
- K – Kit
- LK – Loose Key
- LLB – Log Lighter Bar
- LS – Less Key
- OH – Oval Handle
- PB – Polished Brass
- PE – Plain End
- RB – Rough Brass Finish
- SAT – Satin
- SC – Self-Closing
- SD – Self-Draining
- SW – Sweat Connection
- TH – Tee Handle
- V – Vertical
- WH – Wheel Handle



ACCC

**COMMERCIAL NARROW WALL HYDRANT BOX**

Arrowhead's Stainless Steel Light Commercial Recessed Hose Bibb Box for mild climate is the perfect fit for a 4" wall installation. Model ACCC comes complete for those narrow installations, incorporating an all bronze body and interior parts, with replaceable seat washer, screwdriver supply stop so this valve can be worked on without a building shut down, key operated main valve, and a stainless steel box and cover with a locking key. Comes with a 3/4" FIP inlet.

- ACCC Commercial Close Coupled Valve & Box
- ACCCBFP Commercial Close Coupled Valve & Box with Vacuum Breaker



ACHB

AC4H

**COMMERCIAL FROST FREE HYDRANTS**

Arrowhead commercial anti-siphon, automatic draining, non-freeze wall hydrant complete with integral backflow preventer, copper casing, all bronze interior parts, non-turning operating rod with free-floating compression closure valve. Includes stainless steel face plate and key.

**OPTIONS:** Boxes and valves are sold separately.

- AC4H Commercial 3/4" Female Solder or 3/4" MIP x 4"
- AC6H Commercial 3/4" Female Solder or 3/4" MIP x 6"
- AC8H Commercial 3/4" Female Solder or 3/4" MIP x 8"
- AC10H Commercial 3/4" Female Solder or 3/4" MIP x 10"
- AC12H Commercial 3/4" Female Solder or 3/4" MIP x 12"
- ACHB Commercial Hydrant Box



ACSB

## COMMERCIAL SILLCOCK BOX

The Arrowhead commercial sillcock box eliminates the hazards of protruding hose bibbs. They are recommended for installation in interior or exterior building walls where they are not subject to freezing conditions. All boxes are chrome plated rough cast bronze with doors that have a key operated lock and concealed hinges. IAPMO & ASSE 1011 listed.

**OPTIONS:** Boxes and valves are sold separately.

ACSB Commercial Sillcock Box



AFA7501

## ANYFLOW FROST FREE YARD HYDRANT

Arrowhead heavy duty ANYFLOW Frost Proof Yard Hydrants gives you year round water service, even in freezing weather. Drains below the frostline when shut off.

- AFA7501 Any Flow Yard Hydrant 1'
- AFA7502 Any Flow Yard Hydrant 2'
- AFA7503 Any Flow Yard Hydrant 3'
- AFA7504 Any Flow Yard Hydrant 4'
- AFA7505 Any Flow Yard Hydrant 5'
- AFA7506 Any Flow Yard Hydrant 6'
- AFA7507 Any Flow Yard Hydrant 7'
- AFA7508 Any Flow Yard Hydrant 8'
- AFA7510 Any Flow Yard Hydrant 10'

CA1000



## CA1000 SERIES FROST FREE YARD HYDRANT

Arrowhead medium duty CA1000 Frost Proof Yard Hydrants gives you year round water service, even in freezing weather. Drains below the frostline when shut off.

- CA7501 Yard Hydrant 1'
- CA7502 Yard Hydrant 2'
- CA7503 Yard Hydrant 3'
- CA7504 Yard Hydrant 4'
- CA7505 Yard Hydrant 5'
- CA7506 Yard Hydrant 6'
- CA7507 Yard Hydrant 7'
- CA7508 Yard Hydrant 8'
- CA7510 Yard Hydrant 10'



EA5000



## EA5000 SERIES FROST FREE YARD HYDRANT

Arrowhead economical EA5000 Frost Proof Yard Hydrants gives you year round water service, even in freezing weather. Drains below the frostline when shut off.

- EA7501 3/4" x 1' Bury 1" Galv.
- EA75015 3/4" x 1-1/2' Bury 1" Galv.
- EA7502 3/4" x 2' Bury 1" Galv.
- EA7503 3/4" x 3' Bury 1" Galv.
- EA7504 3/4" x 4' Bury 1" Galv.
- EA7505 3/4" x 5' Bury 1" Galv.
- EA7506 3/4" x 6' Bury 1" Galv.
- EA7507 3/4" x 7' Bury 1" Galv.
- EA7508 3/4" x 8' Bury 1" Galv.



**NEW**

**SRH SERIES FROST FREE  
SANITARY ROOF HYDRANT (BFP)**

*NEW PRODUCT! Arrowhead Sanitary Roof Hydrant does not require a drain and can be located anywhere a water supply is accessible. Drains below the roofline into a canister when shut off. Self-Contained and does NOT contaminate water supply. ASSE 1052 and 1057 Approved. IAPMO Listed.*

SRH7501BFP Sanitary Roof Hydrant  
1' Drop Depth (into  
heated space) with ASSE  
1052 Vacuum Breaker



**NEW**

**SYH SERIES FROST FREE  
SANITARY YARD HYDRANT (BFP)**

*Meets ASSE 1057 Sanitary Yard Hydrant Standard. Prevents Cross-Contamination, does not contaminate Water supply. Fully Self-Contained. No ground Preparation required. Stainless Steel Canister. ASSE 1052 and 1057 Approved. IAPMO Listed.*

SYH7512BFP Sanitary Yard Hydrant 2'  
Bury Depth with ASSE 1052  
Vacuum Breaker

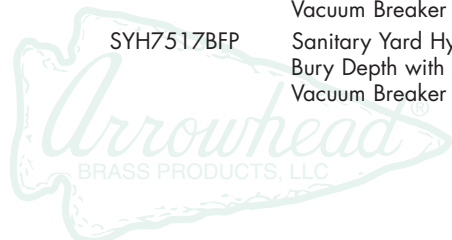
SYH7513BFP Sanitary Yard Hydrant 3'  
Bury Depth with ASSE 1052  
Vacuum Breaker

SYH7514BFP Sanitary Yard Hydrant 4'  
Bury Depth with ASSE 1052  
Vacuum Breaker

SYH7515BFP Sanitary Yard Hydrant 5'  
Bury Depth with ASSE 1052  
Vacuum Breaker

SYH7516BFP Sanitary Yard Hydrant 6'  
Bury Depth with ASSE 1052  
Vacuum Breaker

SYH7517BFP Sanitary Yard Hydrant 7'  
Bury Depth with ASSE 1052  
Vacuum Breaker



56CC



55CC



**SHOWER HEAD ADAPTERS**

55CC Copper Sweat with Brass Nuts - Straight  
56CC Copper Sweat with Brass Nuts - Angle



6001A

**DRAINAGE CONNECTIONS (TRAP ADAPTERS)**

600-1 1-1/2" MIP x 1-1/2" Tube, Brass Nut, Brass Ferrule

600-1A 1-1/2" MIP x 1-1/2" Tube, Brass Nut, Brass Ferrule with Stop

600-2 1- 1/2" MIP x 1-1/2" Tube, Brass Nut, Nylon Ferrule

600-3 1-1/2" MIP x 1-1/2" Tube, Die-Cast Nut, Brass Ferrule

600-4 1-1/2" MIP x 1-1/2" Tube, Die-Cast Nut, Nylon Ferrule

601-2 1-1/2" MIP x 1-1/4" Tube, Brass Nut, Nylon Ferrule

601-4 1-1/2" MIP x 1-1/4" Tube, Die-Cast Nut, Nylon Ferrule

602-1 1-1/2" FIP x 1-1/2" Tube, Brass Nut, Brass Ferrule

602-1A 1-1/2" FIP x 1-1/2" Tube, Brass Nut, Brass Ferrule, with Stop

602-2 1-1/2" FIP x 1-1/2" Tube, Brass Nut, Nylon Ferrule

602-3 1-1/2" FIP x 1-1/2" Tube, Die-Cast Nut, Brass Ferrule

602-4 1-1/2" FIP x 1-1/2" Tube, Die-Cast Nut, Nylon Ferrule

603-2 1-1/2" FIP x 1-1/4" Tube, Brass Nut, Nylon Ferrule

603-4 1-1/2" FIP x 1-1/4" Tube, Die-Cast Nut, Nylon Ferrule

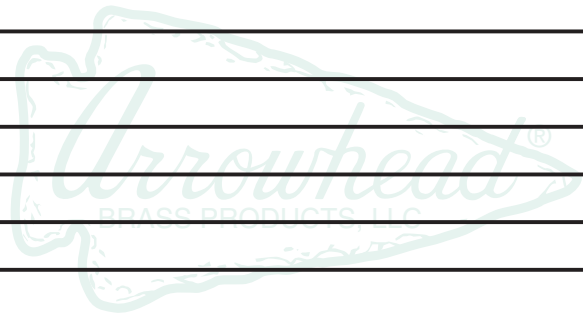
**DEFINITION of ABBREVIATIONS after model numbers**

**B** – Boxed  
**BC** – Bar Coded  
**BFP** – Vacuum Breaker  
**BULK** – Bulk Packed no packaging  
**CC** – Copper Connection  
**CHR** – Chrome  
**K** – Kit  
**LK** – Loose Key  
**LLB** – Log Lighter Bar  
**LS** – Less Key  
**OH** – Oval Handle

**PB** – Polished Brass  
**PE** – Plain End  
**RB** – Rough Brass Finish  
**SAT** – Satin  
**SC** – Self-Closing  
**SD** – Self-Draining  
**SW** – Sweat Connection  
**TH** – Tee Handle  
**V** – Vertical  
**WH** – Wheel Handle

## ARROWHEAD PART KITS

Model No.	Description	For products on page number(s)
PK1100	Complete O-Ring Seal One-Piece Bonnet Stem Assembly for Standard, No-Kinks, Boilers and Sillcocks	4, 5, 6
PK1110	Complete O-Ring Seal One-Piece Bonnet Stem Assembly for Standard, No-Kinks, Boilers and Sillcocks, Nickel Plated	4, 5, 6
PK1120	Stem Assembly & Packing Nut for Compression Stops	4
PK1130	Stem Assembly & Packing Nut for Garden Valves	6
PK1150	Loose Key O-Ring Seal One-Piece Bonnet Stem Assembly & Key for Standard, No-Kinks, Boilers and Sillcocks	3, 5
PK1155	Loose Key O-Ring Seal One-Piece Bonnet Stem Assembly & Key for Standard, No-Kinks, Boilers and Sillcocks, Nickel Plated	3, 5
PK1170	1/2" Copper Compression Kit, Nickel Plated	5
PK1180	1/2" Copper Compression Kit	4
PK1190	3/4" Copper Compression Kit	4
PK1200	Plug & Hose Connection Kit for #248 Washing Machine Valve	5
PK1210	Bleeder Cap & Fibre Disk for Compression Stops	4
PK1220	Base Nut & Washer for 1/2" Garden Valve	6
PK1230	Base Nut & Washer for 3/4" Garden Valve	6
PK1240	Base Nut & Washer for 1" Garden Valve	6
PK1250	Green Wheel Handle & Screw	6
PK1270	Green T-Handle & Screw	2, 4, 6
PK1280	Chrome T-Handle & Screw	5
PK1290	Green Oval Handle & Screw	2, 4, 5, 6, 7
PK1295	Green Rubberized Coated Oval Handle & Screw	3, 8, 9
PK1300	Loose Key Handle for all Arrowhead Loose Key Valves	3, 5
PK1320	Flange & Key 2-1/4" for Log Lighter Valve, Chrome	5
PK1330	Flange & Key 2-1/4" for Log Lighter Valve, Polished Brass	5
PK1340	Log Lighter Key 2-1/4", Polished Brass	5
PK1345	Standard Log Lighter Key 2-1/4", Chrome	5
PK1350	Log Lighter Key 9", Polished Brass	5
PK1360	Replacement Vacuum Breaker 58BFP for Models with BFP after Part Number	4, 5
PK1370	Replacement Vacuum Breaker 58BFPCHR for Models with BFPCHR after Part Number, Nickel Plated	9
PK1380	Replacement Self-Draining Vacuum Breaker 59BFP for Models with BFPSD after Part Number	6
PK1390	Replacement Self-Draining Vacuum Breaker 59BFPCHR for Models with BFPSD after Part Number & 480 Series, Nickel Plated	7, 8
PK1430	Green Capped Air Vent Complete Assembly for 420 Series & 450BFP Series	8, 9
PK1440	Complete Drain Assembly for 450BFP Series	9
PK1450	Replacement Grey Gap Spacer for all Frost Free Hydrants	3, 7, 8, 9
PK1600	Arrow-Breaker Complete Stem Assembly for Arrow-Breaker No-Kinks and Sillcocks	2
PK2004	4" O-Ring Seal One-Piece Bonnet Stem Assembly for 420 Series	8
PK2004LK	4" O-Ring Seal One-Piece Bonnet Stem Assembly for 420 Series, Loose Key	8
PK2006	6" O-Ring Seal One-Piece Bonnet Stem Assembly for 420 Series	8



## ARROWHEAD PART KITS Cont.

Model No.	Description	For products on page number(s)
PK2006LK	6" O-Ring Seal One-Piece Bonnet Stem Assembly for 420 Series, Loose Key	8
PK2008	8" O-Ring Seal One-Piece Bonnet Stem Assembly for 420 Series	8
PK2008LK	8" O-Ring Seal One-Piece Bonnet Stem Assembly for 420 Series, Loose Key	8
PK2010	10" O-Ring Seal One-Piece Bonnet Stem Assembly for 420 Series	8
PK2010LK	10" O-Ring Seal One-Piece Bonnet Stem Assembly for 420 Series, Loose Key	8
PK2012	12" O-Ring Seal One-Piece Bonnet Stem Assembly for 420 Series	8
PK2012LK	12" O-Ring Seal One-Piece Bonnet Stem Assembly for 420 Series, Loose Key	8
PK2014	14" O-Ring Seal One-Piece Bonnet Stem Assembly for 420 Series	8
PK2014LK	14" O-Ring Seal One-Piece Bonnet Stem Assembly for 420 Series, Loose Key	8
PK2016	SpringLESS Check Assembly for 420 Series Stem	8
PK5004	Apache 4" O-Ring Seal One-Piece Bonnet Stem Assembly for 450BFP Series	9
PK5006	Apache 6" O-Ring Seal One-Piece Bonnet Stem Assembly for 450BFP Series	9
PK5008	Apache 8" O-Ring Seal One-Piece Bonnet Stem Assembly for 450BFP Series	9
PK5010	Apache 10" O-Ring Seal One-Piece Bonnet Stem Assembly for 450BFP Series	9
PK5012	Apache 12" O-Ring Seal One-Piece Bonnet Stem Assembly for 450BFP Series	9
PK5014	Apache 14" O-Ring Seal One-Piece Bonnet Stem Assembly for 450BFP Series	9
PK6004	Arrow-Breaker Frost Free Stem Assembly 4" for 460 Series	3
PK6006	Arrow-Breaker Frost Free Stem Assembly 6" for 460 Series	3
PK6008	Arrow-Breaker Frost Free Stem Assembly 8" for 460 Series	3
PK6010	Arrow-Breaker Frost Free Stem Assembly 10" for 460 Series	3
PK6012	Arrow-Breaker Frost Free Stem Assembly 12" for 460 Series	3
PK6014	Arrow-Breaker Frost Free Stem Assembly 14" for 460 Series	3
PK8004	4" O-Ring Seal One-Piece Bonnet Stem Assembly for 480 Series	8
PK8004LK	4" O-Ring Seal One-Piece Bonnet Stem Assembly for 480 Series, Loose Key	8
PK8006	6" O-Ring Seal One-Piece Bonnet Stem Assembly for 480 Series	8
PK8006LK	6" O-Ring Seal One-Piece Bonnet Stem Assembly for 480 Series, Loose Key	8
PK8008	8" O-Ring Seal One-Piece Bonnet Stem Assembly for 480 Series	8
PK8008LK	8" O-Ring Seal One-Piece Bonnet Stem Assembly for 480 Series, Loose Key	8
PK8010	10" O-Ring Seal One-Piece Bonnet Stem Assembly for 480 Series	8
PK8010LK	10" O-Ring Seal One-Piece Bonnet Stem Assembly for 480 Series, Loose Key	8
PK8012	12" O-Ring Seal One-Piece Bonnet Stem Assembly for 480 Series	8
PK8012LK	12" O-Ring Seal One-Piece Bonnet Stem Assembly for 480 Series, Loose Key	8
PK8014	14" O-Ring Seal One-Piece Bonnet Stem Assembly for 480 Series	8
PK8014LK	14" O-Ring Seal One-Piece Bonnet Stem Assembly for 480 Series, Loose Key	8

### DEFINITION of ABBREVIATIONS after model numbers

<b>B</b> – Boxed	<b>CC</b> – Copper Connection	<b>LLB</b> – Log Lighter Bar	<b>PE</b> – Plain End	<b>SD</b> – Self-Draining	<b>WH</b> – Wheel Handle
<b>BC</b> – Bar Coded	<b>CHR</b> – Chrome	<b>LS</b> – Less Key	<b>RB</b> – Rough Brass Finish	<b>SW</b> – Sweat Connection	
<b>BFP</b> – Vacuum Breaker	<b>K</b> – Kit	<b>OH</b> – Oval Handle	<b>SAT</b> – Satin	<b>TH</b> – Tee Handle	
<b>BULK</b> – Bulk Packed no packaging	<b>LK</b> – Loose Key	<b>PB</b> – Polished Brass	<b>SC</b> – Self-Closing	<b>V</b> – Vertical	



### BRASS FITTINGS HOSE/PIPE

5F	Swivel Fitting 3/4" Female Hose Thread to 1/2" Male Pipe Thread
6F	Non-Swivel Fitting 3/4" Male Hose Thread to 3/4" Male Pipe Thread
7F	Swivel Fitting 3/4" Female Hose Thread to 3/4" Female Pipe Thread
8F	Non-Swivel Fitting 3/4" Male Hose Thread to 3/4" Male Pipe Thread or 1/2" Female Pipe Thread
9F	Non-Swivel Fitting 3/4" Female Hose Thread to 3/4" Male Pipe Thread or 1/2" Female Pipe Thread
10F	Non-Swivel Fitting 3/4" Male Hose Thread to 1/2" Male Pipe Thread
12F	Non-Swivel Fitting 3/4" Female Hose Thread to 3/4" Female Pipe Thread"
13F	Swivel Fitting 3/4" Female Hose Thread to 1/2" Female Pipe Thread
14HC	Brass Hose End Cap 3/4" Female Hose Thread



### ANGLE VALVES LESS UNION

Quality Red Brass construction features full-flow waterway for low pressure loss to effectively regulate water supply. Easily converts to Automatic operation. Available with fixed stem or rising swivel (RS). Rated at 150 PSI.

200-075	3/4" less Union Red Brass
200-100	1" less Union Red Brass
200RS-075	3/4" less Union Rising Swivel - Red Brass
200RS-100	1" less Union Rising Swivel - Red Brass
200RS-125	1-1/4" less Union Rising Swivel - Red Brass
200RS-150	1-1/2" less Union Rising Swivel - Red Brass
200RS-200	2" less Union Rising Swivel - Permanent Seal - Red Brass



### STRAIGHT VALVE

Quality Red Brass construction features full-flow waterway for low pressure loss to effectively regulate water supply. Easily converts to Automatic operation. Available with fixed stem or rising swivel (RS). Rated at 150 PSI.

100-075	3/4" Red Brass
100-100	1" Red Brass
100RS-075	3/4" Rising Swivel - Red Brass
100RS-100	1" Rising Swivel - Red Brass
100RS-125	1-1/4" Rising Swivel - Red Brass
100RS-150	1-1/2" Rising Swivel - Red Brass
100RS-200	2" Rising Swivel - Red Brass



### ANGLE VALVES WITH UNION

Quality Red Brass construction features full-flow waterway for low pressure loss to effectively regulate water supply. Easily converts to Automatic operation. Available with fixed stem or rising swivel (RS). Rated at 150 PSI.

300-075	3/4" with Union Red Brass
300-100	1" with Union Red Brass
300RS-075	3/4" with Union Rising Swivel - Red Brass
300RS-100	1" with Union Rising Swivel - Red Brass
300RS-125	1-1/4" with Union Rising Swivel - Red Brass
300RS-150	1-1/2" with Union Rising Swivel - Red Brass
300RS-200	2" with Union Rising Swivel - Red Brass





BG-100



CL466-075

## BRASS INLINE VALVES

Features True Red Brass construction, EPDM Diaphragm, reverse flow design ensures diaphragm fails in the closed position, manual On/Off operation with internal & external bleed, flow adjustment stem and the Reclaimed Water Series (RW) has a purple bonnet signifying non-potable water.

- BG-075 3/4" Globe Valve - Red Brass with Reverse Flow
- BG-100 1" Globe Valve - Red Brass with Reverse Flow
- BG-125 1-1/4" Globe Valve - Red Brass with Reverse Flow
- BG-150 1-1/2" Globe Valve - Red Brass with Reverse Flow
- BG-200 2" Globe Valve - Red Brass with Reverse Flow
- BG-075RW 3/4" Reclaimed Water Red Brass with Reverse Flow
- BG-100RW 1" Reclaimed Water Red Brass with Reverse Flow
- BG-125RW 1-1/4" Reclaimed Water Red Brass with Reverse Flow
- BG-150RW 1-1/2" Reclaimed Water Red Brass with Reverse Flow
- BG-200RW 2" Reclaimed Water Red Brass with Reverse Flow



466-100



V-19-466P-100

## ANTI-SIPHON VALVE

Features Red Brass construction, atmospheric vacuum breaker that prevents backflow of foul water into the household water supply, full size water ways for low pressure loss, durable seals. Tested and listed with the City of Los Angeles, IAPMO and ASSE. They are not designed for constant pressure applications.

- 466-075 3/4" Valve with Union - Red Brass
- 466-100 1" Valve with Union - Red Brass
- 466P-075 3/4" Valve less Union - Red Brass
- 466P-100 1" Valve less Union - Red Brass
- V-19-466-075 3/4" Body Assembly with Union - Red Brass
- V-19-466-100 1" Body Assembly with Union - Red Brass
- V-19-466P-075 3/4" Body Assembly less Union - Red Brass
- V-19-466P-100 1" Body Assembly less Union - Red Brass

## AUTOMATIC CONTROL VALVE (CLASSIC SERIES)

Features Professional Quality, Red Brass Actuator with Red Brass Anti-Siphon Valve. Manual flow control and external bleed, Anti-Siphon prevents backflow of foul water into household water supply. Optimal Operating Pressure - 25 to 100 PSI. Rated to 150 PSI.

- CL466-075 3/4" Classic with Union - Red Brass
- CL466-100 1" Classic with Union - Red Brass
- CL466P-075 3/4" Classic less Union - Red Brass
- CL466P-100 1" Classic less Union - Red Brass



CL-075



AA-075

## AUTOMATIC ACTUATORS (CONVERTS MANUAL TO AUTOMATIC)

Quality Red Brass construction. Easily converts Champion Manual valves to Automatic operation. Rated to 150 PSI.

- CL-075 3/4" Classic Automatic Actuator - Red Brass
- CL-100 1" Classic Automatic Actuator - Red Brass
- AA-075 3/4" Compact Automatic Actuator - Red Brass
- AA-100 1" Compact Automatic Actuator - Red Brass

### DEFINITION of ABBREVIATIONS after model numbers

- B - Boxed
- BC - Bar Coded
- BFP - Vacuum Breaker
- BULK - Bulk Packed no packaging
- CC - Copper Connection
- CHR - Chrome
- K - Kit
- LK - Loose Key
- LLB - Log Lighter Bar
- LS - Less Key
- OH - Oval Handle
- PB - Polished Brass
- PE - Plain End
- RB - Rough Brass Finish
- SAT - Satin
- SC - Self-Closing
- SD - Self-Draining
- SW - Sweat Connection
- TH - Tee Handle
- V - Vertical
- WH - Wheel Handle



262-100



362-100

## ATMOSPHERIC VACUUM BREAKERS

Features True Red Brass construction, prevents backflow of water into potable water line, full size waterways for low pressure loss, durable seals, tested and listed with the City of Los Angeles, IAPMO and ASSE. Not designed for constant pressure applications.

- 262-075 3/4" less Union - Red Brass
- 262-100 1" less Union - Red Brass
- 262-125 1-1/4" less Union - Red Brass
- 262-150 1-1/2" less Union - Red Brass
- 262-200 2" less Union - Red Brass
- 362-075 3/4" with Union - Red Brass
- 362-100 1" with Union - Red Brass
- 362-125 1-1/4" with Union - Red Brass
- 362-150 1-1/2" with Union - Red Brass
- 362-200 2" with Union - Red Brass

## QUICK COUPLER KEYS

- CK-075 3/4" Male, 1/2" Female - Red Brass
- CK-100 1" Male, 3/4" Female - Red Brass



CK-100

## COUPLER SWIVEL CONNECTIONS

- QCS-1 3/4" FIP to 3/4" Hose Thread Valve
- QCS-2 1" FIP to 3/4" Hose Thread Valve
- QCS-3 1" FIP to 1" Hose Thread Valve



QCS-3

## COUPLER VALVES, KEYS & SWIVELS

Reclaimed water valves available by special order. Keys are interchangeable with most manufacturer's coupler valves. Swivel easily attaches hose to quick coupler. Swivel rotates 360 degrees.

- QCV-075 3/4" Single Lug with Metal Cover - Red Brass
- QCV-075V 3/4" Single Lug with Vinyl Cover
- QCV-075VL 3/4" Single Lug/Locking Vinyl Cover
- QCV-100 1" Single Lug with Metal Cover - Red Brass
- QCV-100V 1" Single Lug with Vinyl Cover
- QCV-100VL 1" Single Lug/Locking Vinyl Cover



QCV-100



SJU-1



SJT-9



## BRASS SLIP JOIN COMPRESSION UNIONS & TEES

Quality Red Brass construction. Used to repair broken pipe or to attach threaded pipe to non-threaded pipe.

- SJU-1 1/2" PVC, Iron Pipe, Galv. or 3/4" Copper x 3" Length Union
- SJU-2 3/4" PVC, Iron Pipe, Galv. or 1" Copper x 3" Length Union
- SJU-51 1/2" PVC, Iron Pipe, Galv. or 3/4" Copper x 5" Length Union
- SJU-52 3/4" PVC, Iron Pipe, Galv. or 1" Copper x 5" Length Union
- SJT-9 1/2" PVC, Iron Pipe, Galv. or 3/4" Copper x 3/4" FPT Tee
- SJT-10 3/4" PVC, Iron Pipe, Galv. or 1" Copper x 1" FPT Tee



### DEFINITION of ABBREVIATIONS after model numbers

- |  |                               |                              |                                |                              |                          |
|--|-------------------------------|------------------------------|--------------------------------|------------------------------|--------------------------|
| <b>B</b> – Boxed                       | <b>CC</b> – Copper Connection | <b>LLB</b> – Log Lighter Bar | <b>PE</b> – Plain End          | <b>SD</b> – Self-Draining    | <b>WH</b> – Wheel Handle |
| <b>BC</b> – Bar Coded                  | <b>CHR</b> – Chrome           | <b>LS</b> – Less Key         | <b>RB</b> – Rough Brass Finish | <b>SW</b> – Sweat Connection |                          |
| <b>BFP</b> – Vacuum Breaker            | <b>K</b> – Kit                | <b>OH</b> – Oval Handle      | <b>SAT</b> – Satin             | <b>TH</b> – Tee Handle       |                          |
| <b>BULK</b> – Bulk Packed no packaging | <b>LK</b> – Loose Key         | <b>PB</b> – Polished Brass   | <b>SC</b> – Self-Closing       | <b>V</b> – Vertical          |                          |

## Champion-Arrowhead, LLC

5147 Alhambra Ave., Los Angeles, CA 90032 323 221-9137, fax 323 221-2579  
 Now, Better Than Ever! Reliable – Proven – Trusted – Since 1936

